

2023



conceptual development of the residential building,
renovation of the historical building and
landscaping its territory in the
city of Lisbon



KYRGYZSTAN



ASYLBEKOV
KERIM



NARYNBEKOV
KYLUM

Introduction

Modernism opened up a new understanding of space in architecture, freeing itself from the traditional constraints of corporeality and mass. Contemporary architecture continues this trend, creating functional and comfortable spaces that meet the needs of modern society.

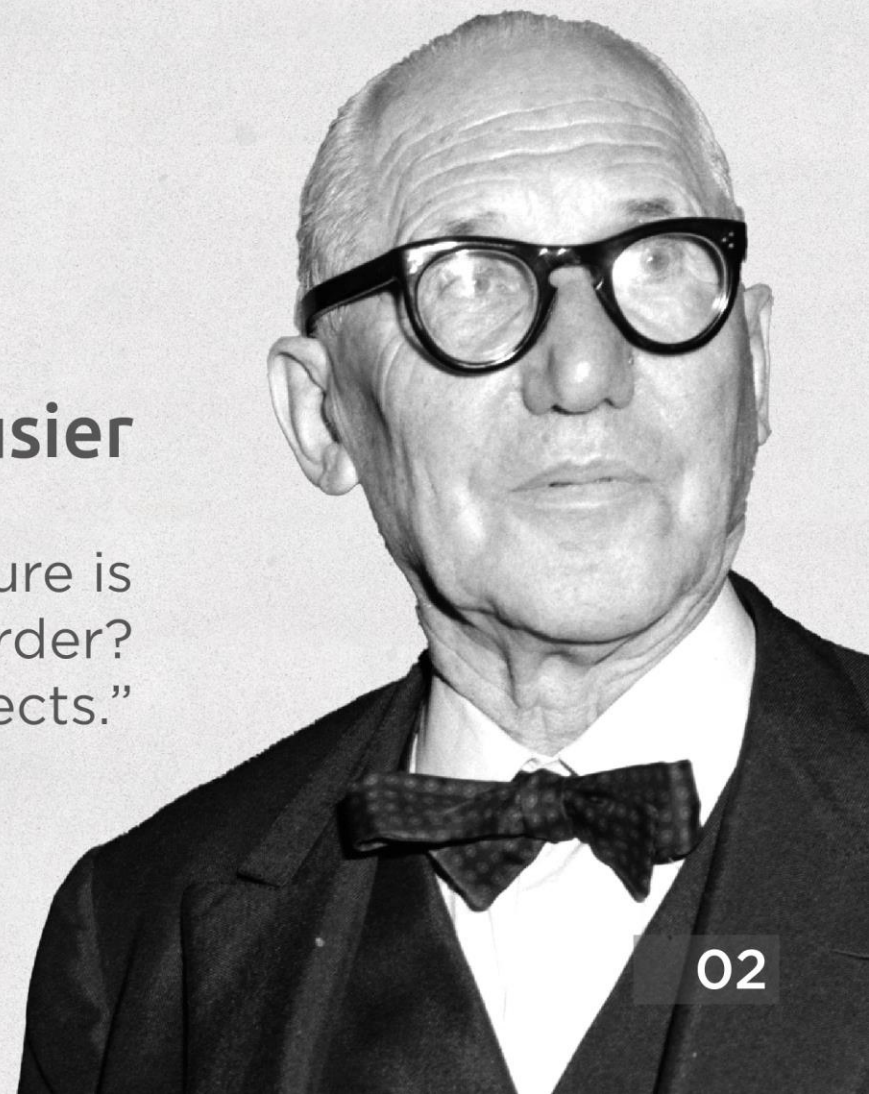


Bjarke Ingels

“I like that my ideas are continued by new generations.”

Le Corbusier

“To create architecture is to put in order. Put what in order? Function and objects.”



Concept

8 House

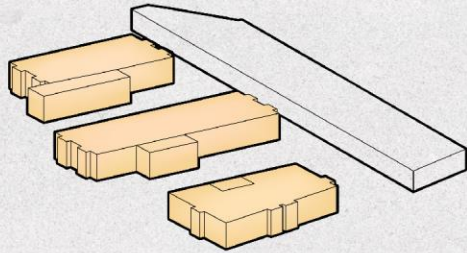


Villa Savoye

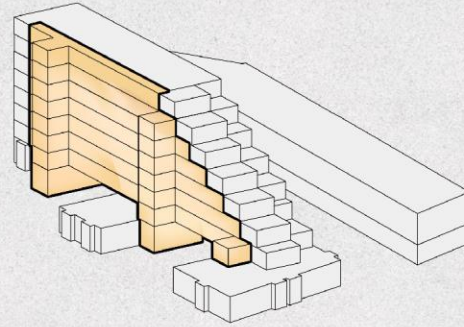
Concept

The concept of the project is based on solving space with functional considerations and the influence of space on form.

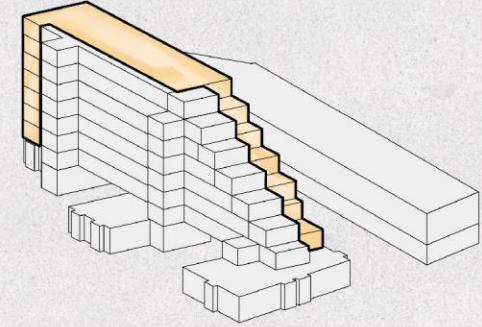
COMMERCIAL FLOOR
scheme



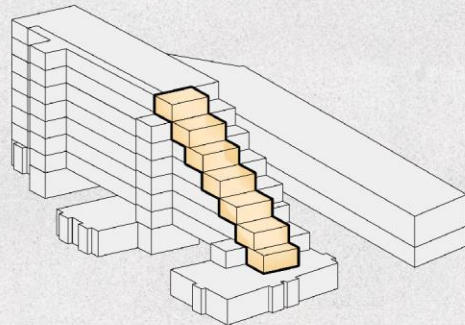
CORRIDORS
scheme



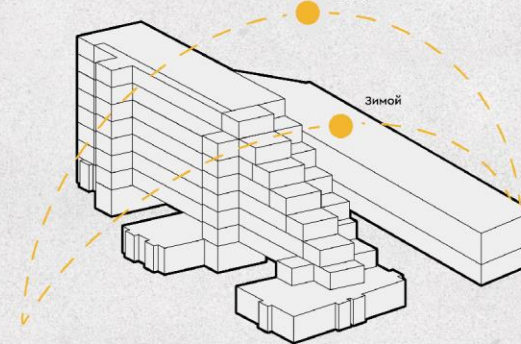
RESIDENTIAL BLOCK
scheme



COMMERCIAL FLOOR
scheme



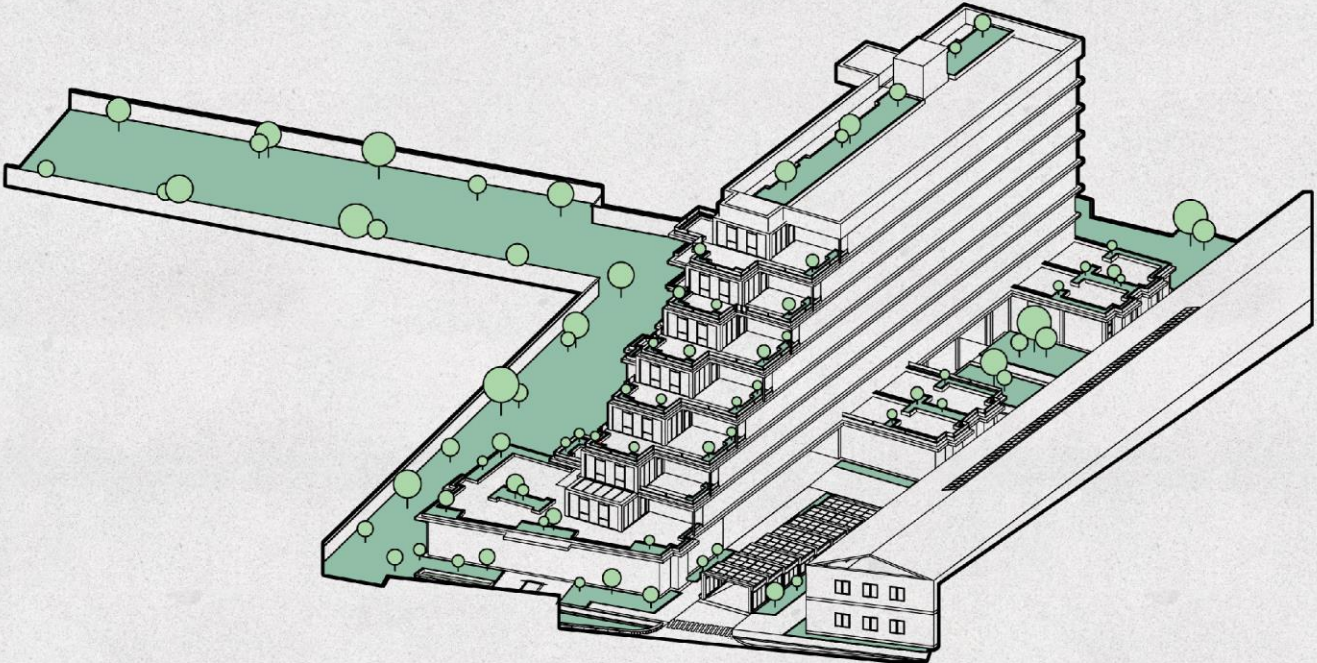
SOLAR CIRCUIT
scheme



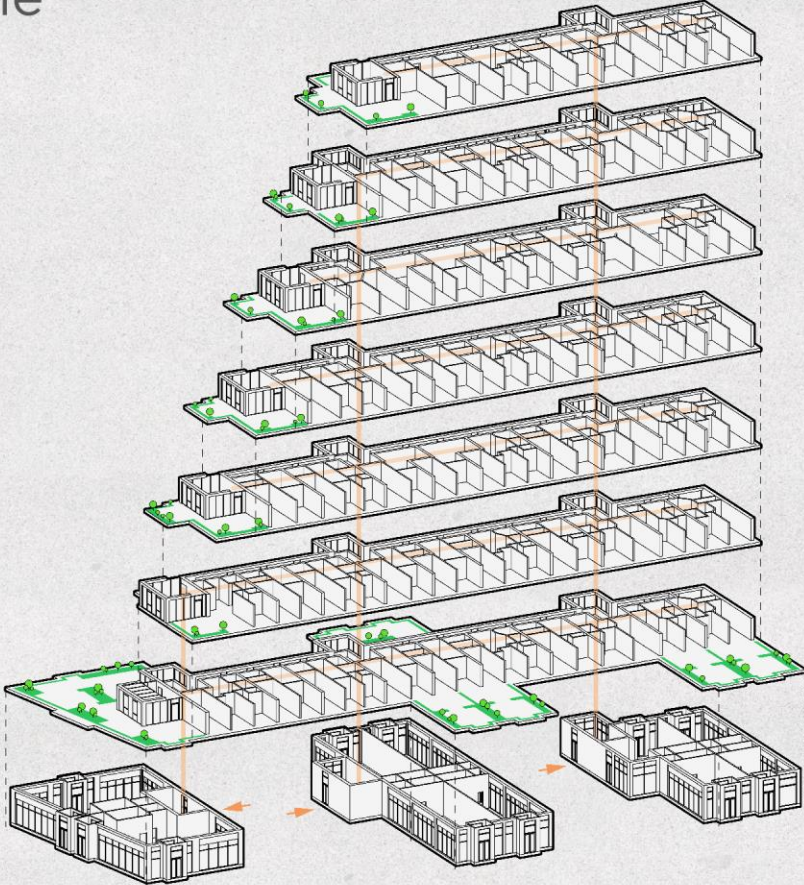
The relationship between space and form, which is formed by communicative-functional processes, creates a fluid plan, free plan, and fluid space.

Concept

LANDSCAPING
scheme

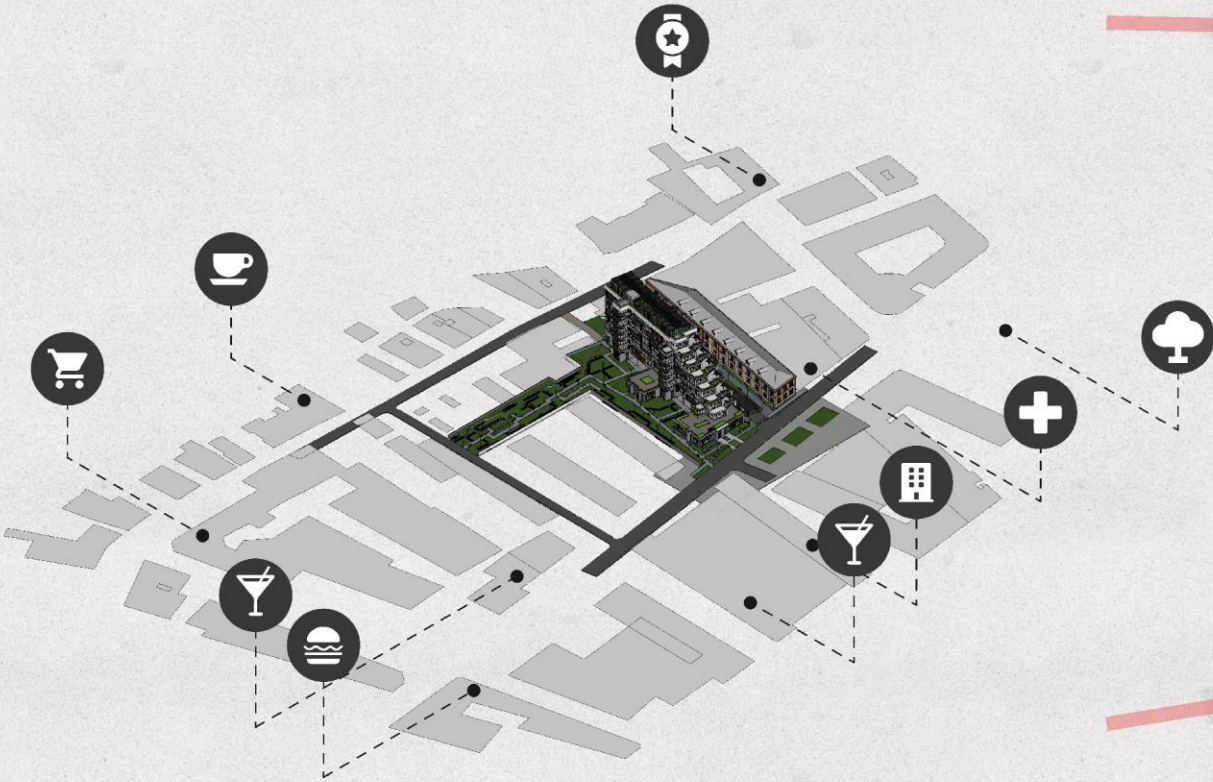


MORPHOLOGICAL
scheme



Urban planning structure

Urban analysis



Site plan



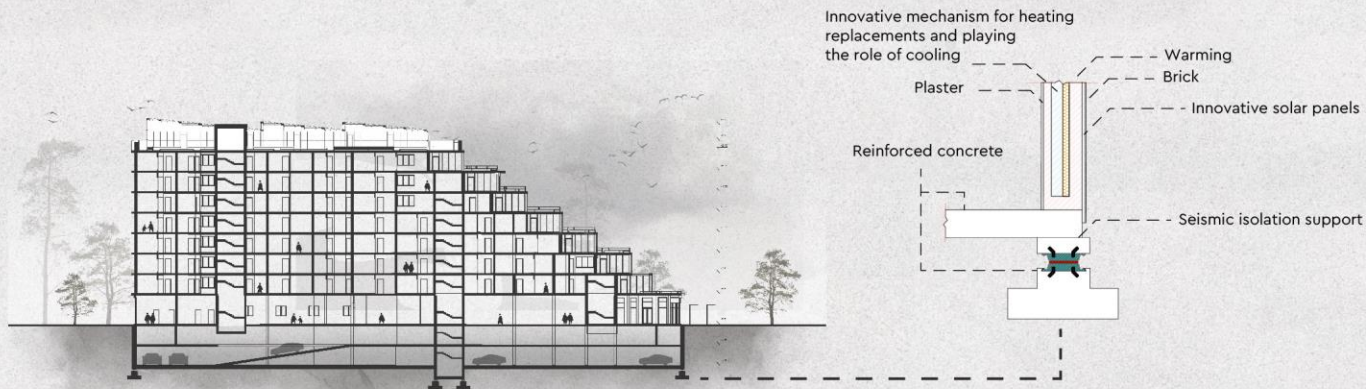
South facade



Affective space



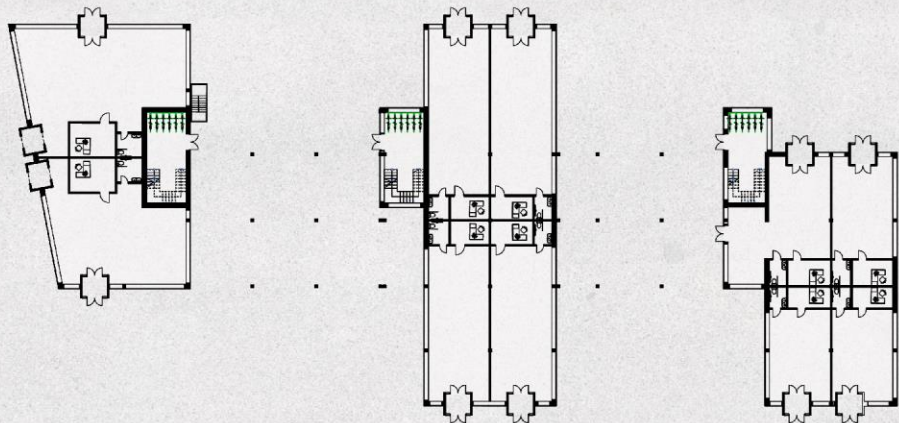
Section 1-1



Eastern facade



1st floor



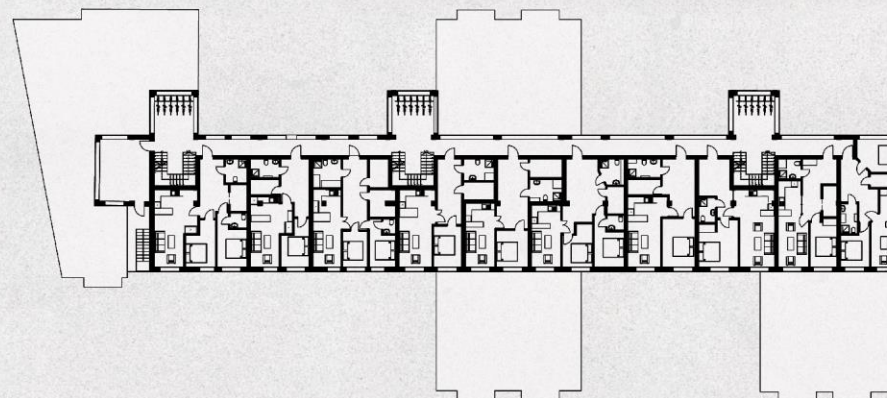
1st floor



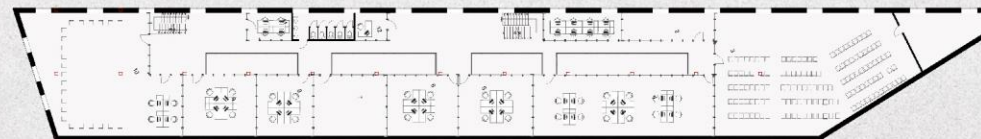
Explication of the 1st floor:

1	Corridor, Foyer	258,38	9	Toilet	15,01
2	Reception	22,30	10	Meeting room	20,03
3	Coffee shop, foyer	94,37	11	Office of the Secretary and Administrative Support	20,00
4	Exhibition hall	300,64	12	Premises for the production of executive works	30,15
5	Store	38,94	13	Meeting rooms	20,04
6	Toilet	15,01	14	Coordinator's room with meeting table	20,38
7	Sound studio	12,02	15	Working room	40,02
8	Coordinator's room, with a meeting table	20,03	16	Bathroom for workers	25,07
			17	Food reception area/pantry for workers	18,14
					970,53 m2

2nd floor



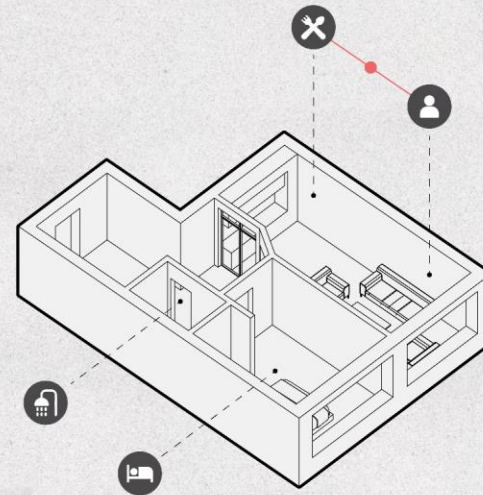
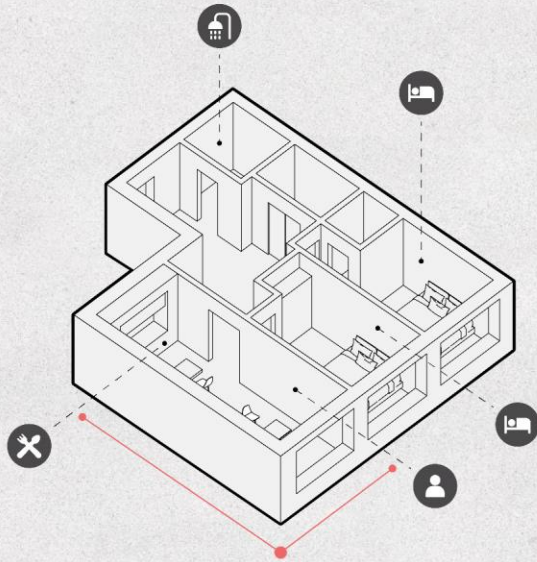
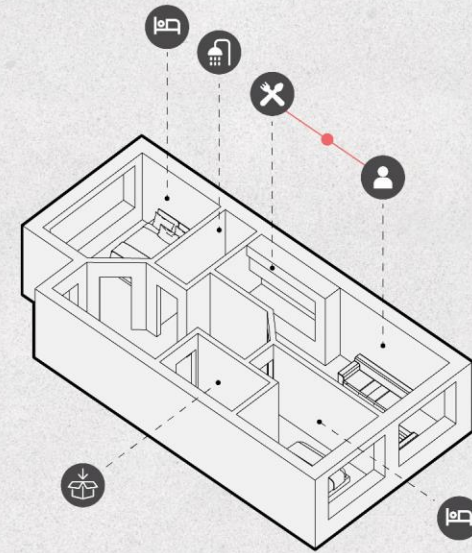
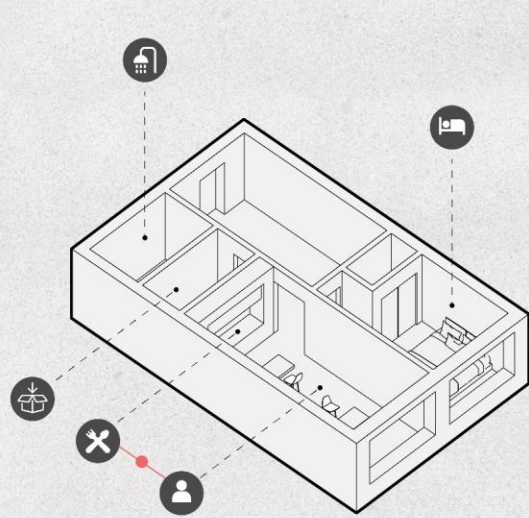
2nd floor



Explication of the 2nd floor:

1	Reading space	19,85	6	Video Digitization room	39,34
2	Storage room for shooting equipment	23,55	7	Archive storage room	40,09
3	Auditorium with 140 seats	223,80	8	Individual video formats	31,23
4	Studio cyclogram	99,44	9	Video editing room	40,60
5	Movie descriptions room	40,93	10	The Collective Video Room	139,45
			11	Network server and backstage room	11,40
			12	Individual room support	8,22
					717,90 m2


**One bedroom
apartment**




**Two bedroom
apartment**

**Kitchen
vizualization**



**Living room
vizualization**



**Hall
vizualization**



**Bedroom
vizualization**





Hear

silence acoustics
 appropriate sound environment
 isolate from bothersome
 sounds
 reduce reverberation



See

light
 attention to the right
 amount of daylight
 design
 color



providing an outside view

Multi Comfort
 BY SAINT-GOBAIN

Feel

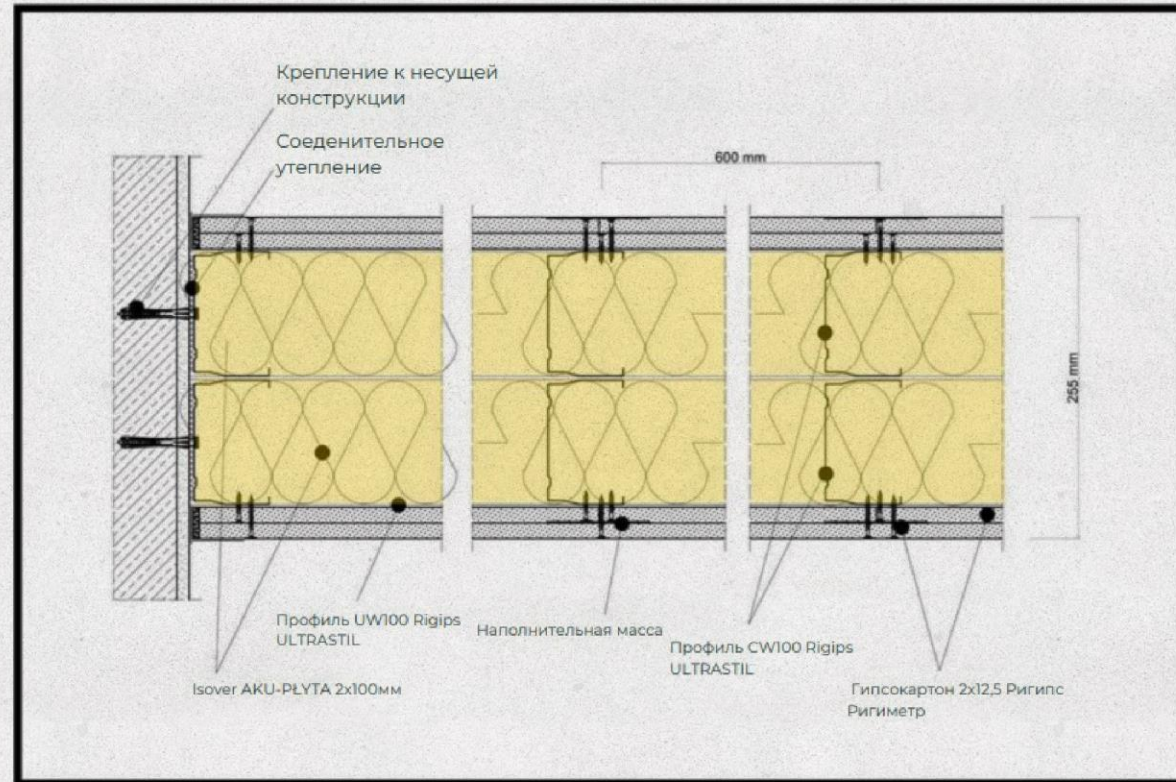
pleasant temperature in both
 winter and summer
 adequate thermal insulation



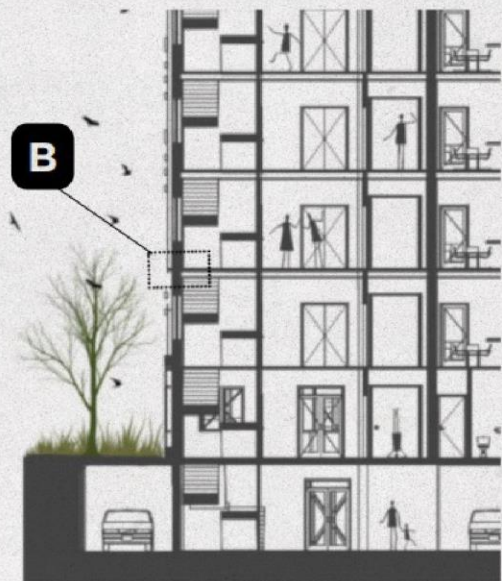
Breathe

air quality
 cleanliness
 humidity
 healthy microclimate
 ventilation and ensuring
 adequate air exchange

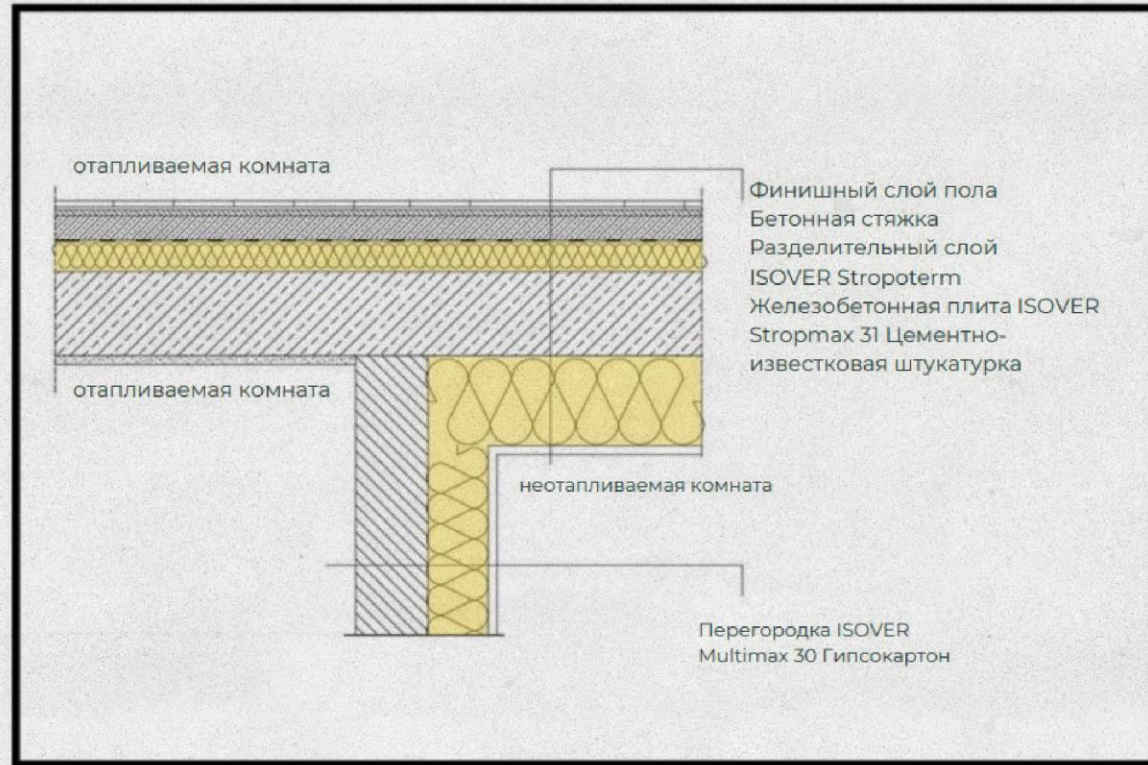
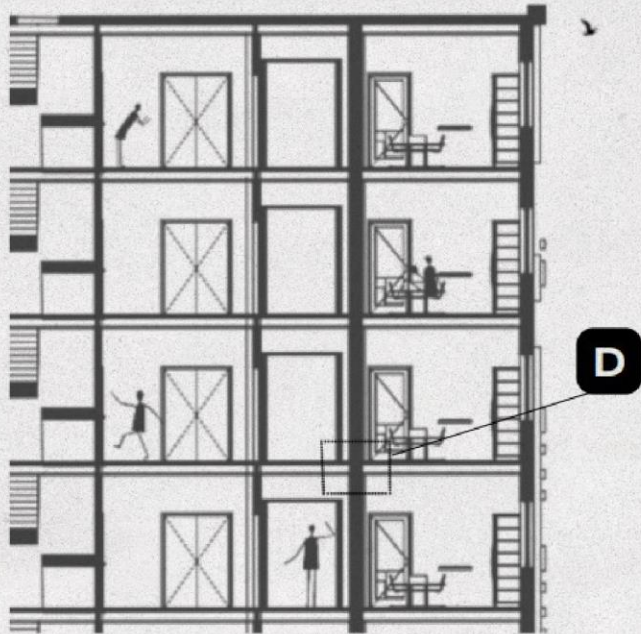




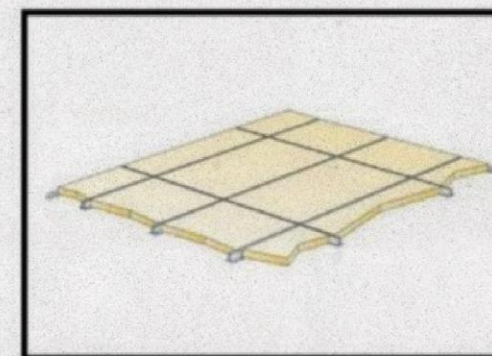
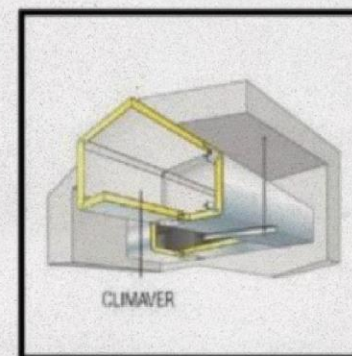
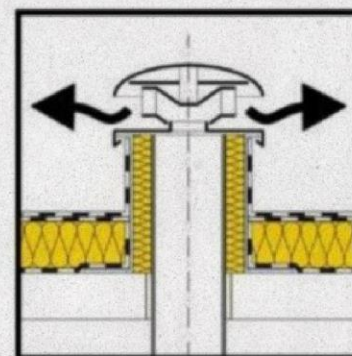
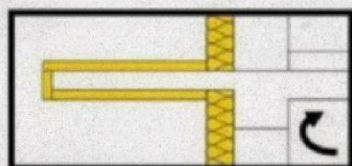
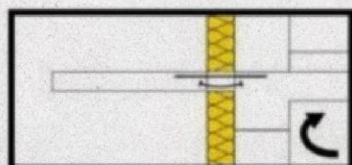
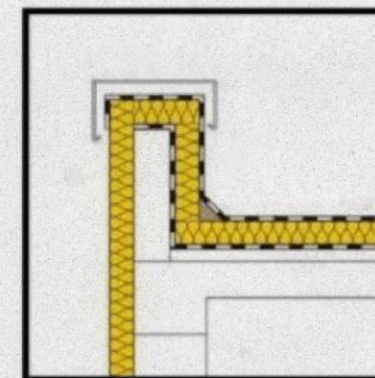
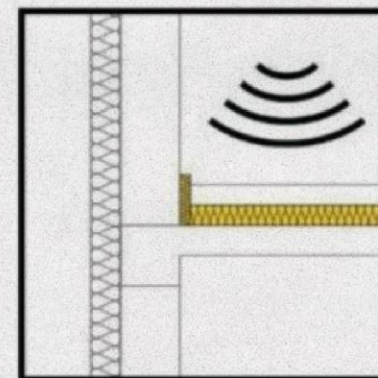
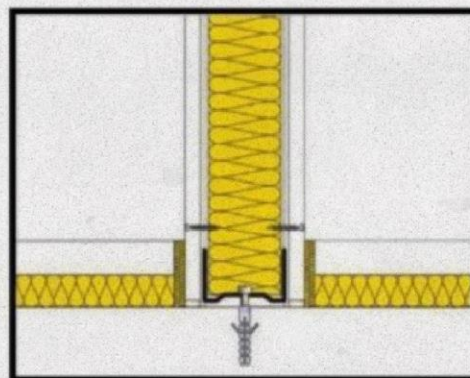
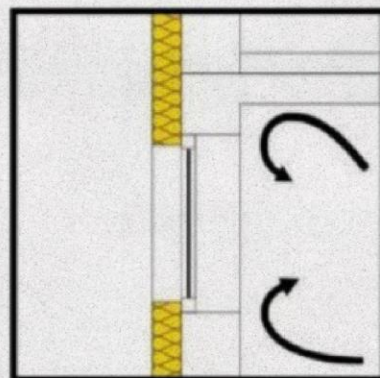
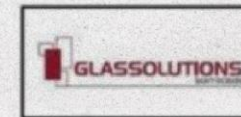
Partition details



External wall details



The ceiling above the heated and unheated parts



Avoiding thermal bridges

CALCULATIONS

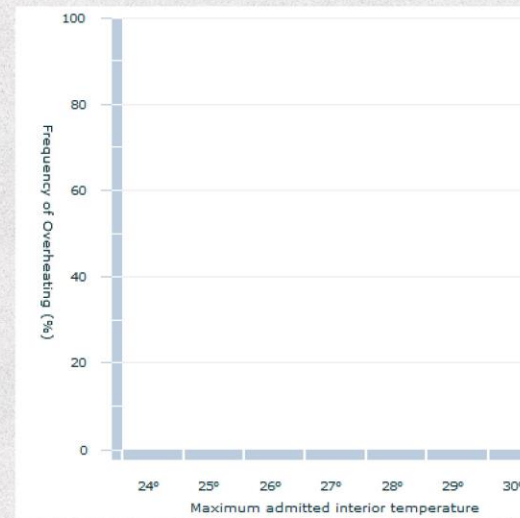
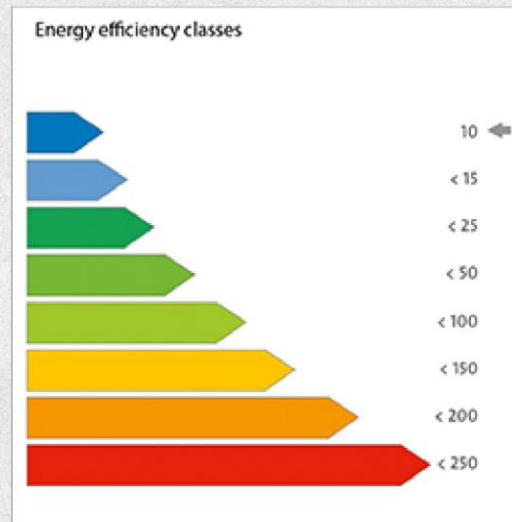
Specific Heat Demand

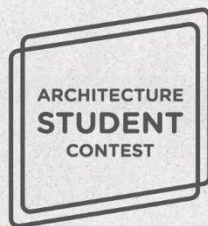
Transmission Heat Losses:	82618.33	kWh/a
Ventilation Heat Losses:	24623425.08	kWh/a
Total Heat Losses:	24706043.41	kWh/a
Internal Heat Gains:	42212676.34	kWh/a
Solar Heat Gains:	97068.71	kWh/a
Total Heat Gains:	23979354.61	kWh/a
Annual Heat Demand:	726688.80	kWh/a
Specific Heat Demand:	0.14	kWh/(m2a)

CALCULATIONS

Overheating

Exterior Thermal Transmittance:	1819.21	W/K
Ground Thermal Transmittance:	15.00	W/K
Ventilation Transmission Ambient:	2286.90	W/K
Ventilation Transmission Ground:	0.00	W/K
Solar Aperture:	453.00	m2
Frequency of Overheating:	0.00	%





Thank you for your
attention

