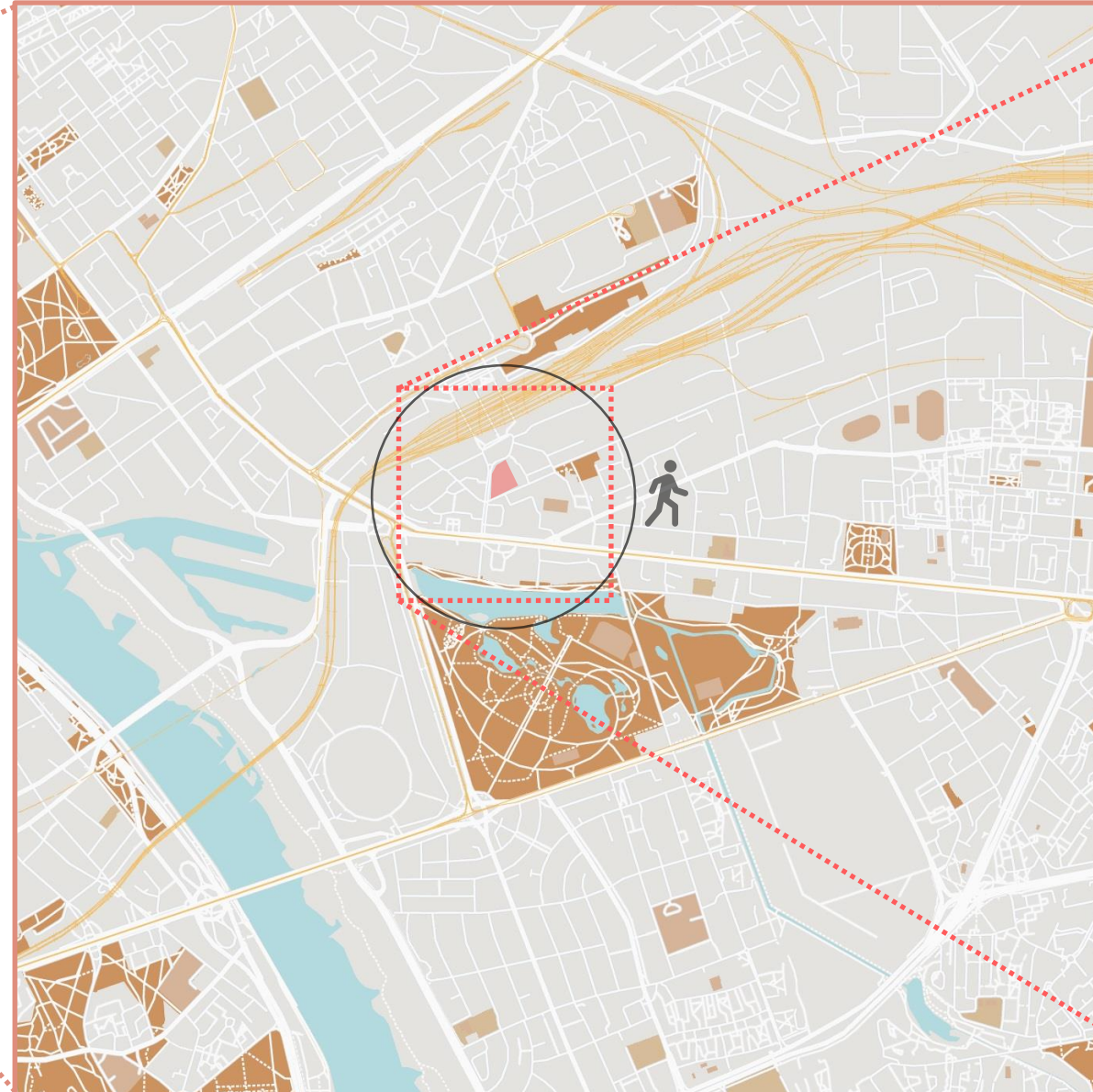
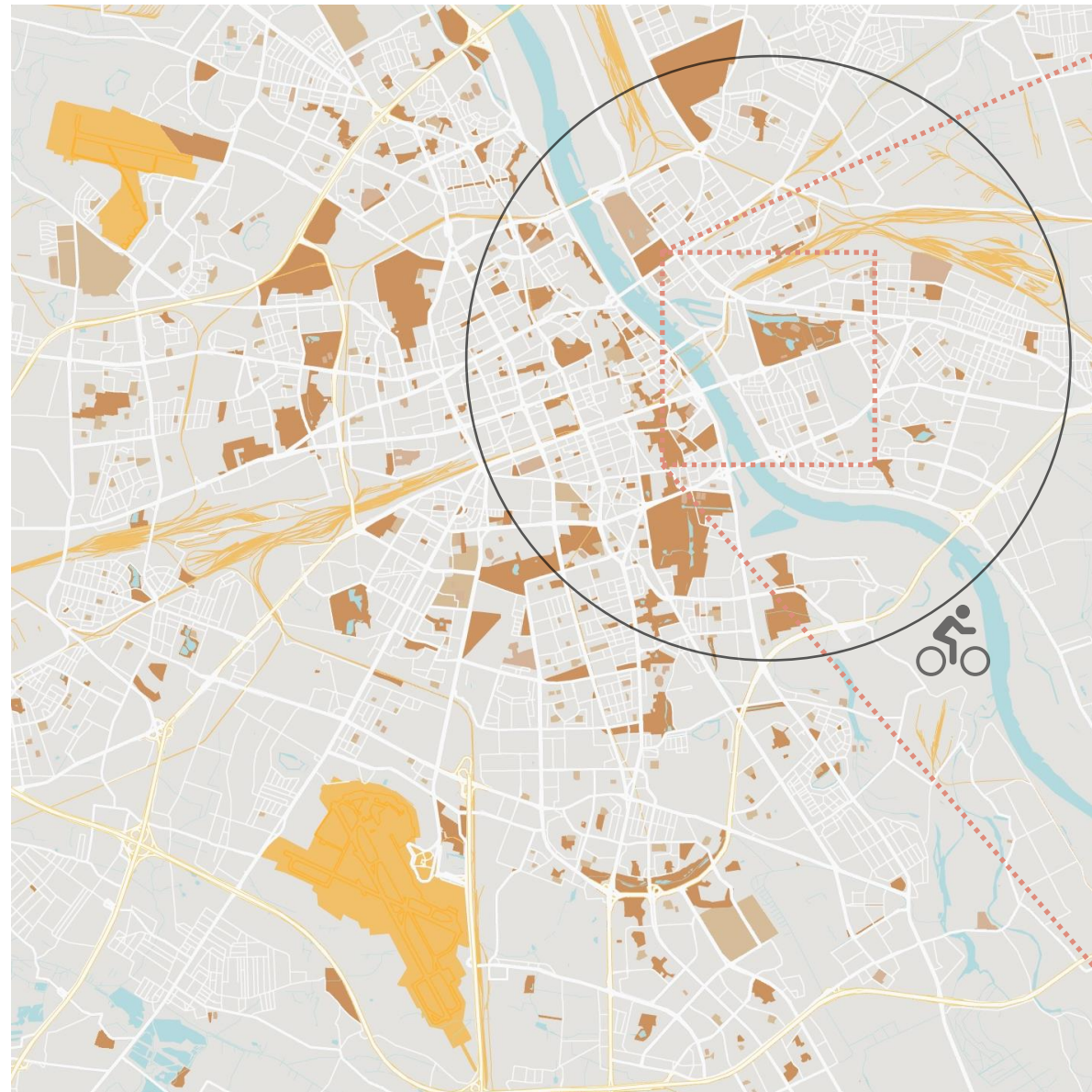


An aerial architectural rendering of a garden courtyard. The design features a central paved area with a light grey, textured surface, surrounded by green lawns and various trees, including tall evergreens and smaller deciduous trees. Winding paths in a reddish-brown material meander through the space. Numerous small human figures are scattered throughout the scene, engaged in various activities: walking, sitting on benches, and riding bicycles. In the upper right corner, a large brick building with a grey tiled roof and arched windows is visible. In the bottom right corner, a portion of a white building with a grey roof is shown. The overall atmosphere is one of a vibrant, communal outdoor space.

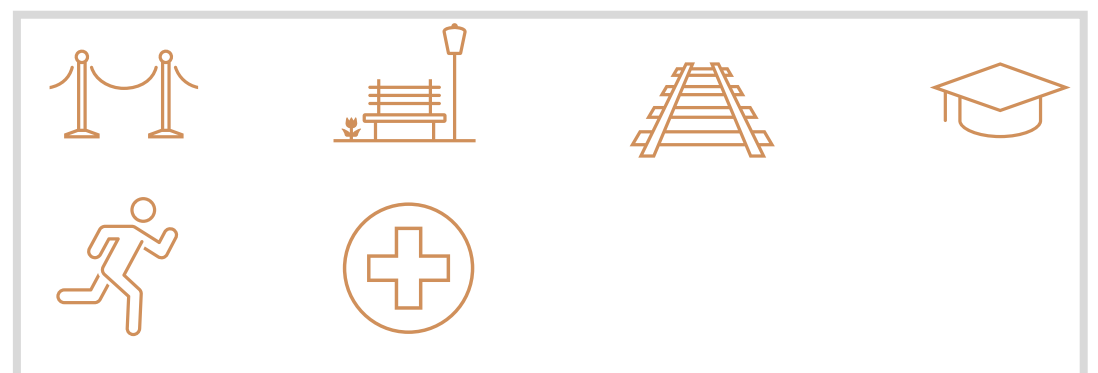
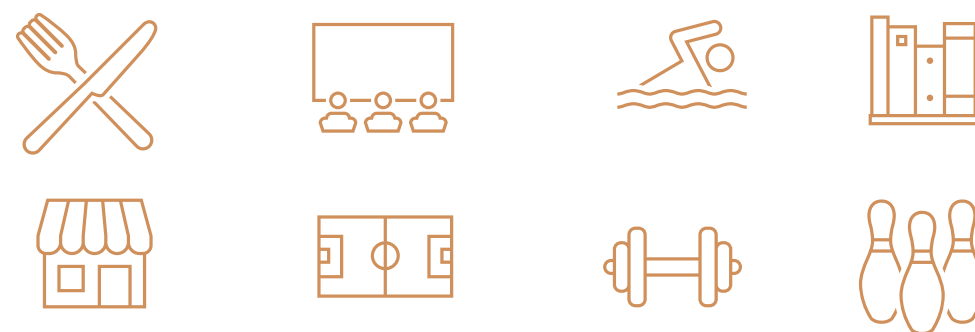
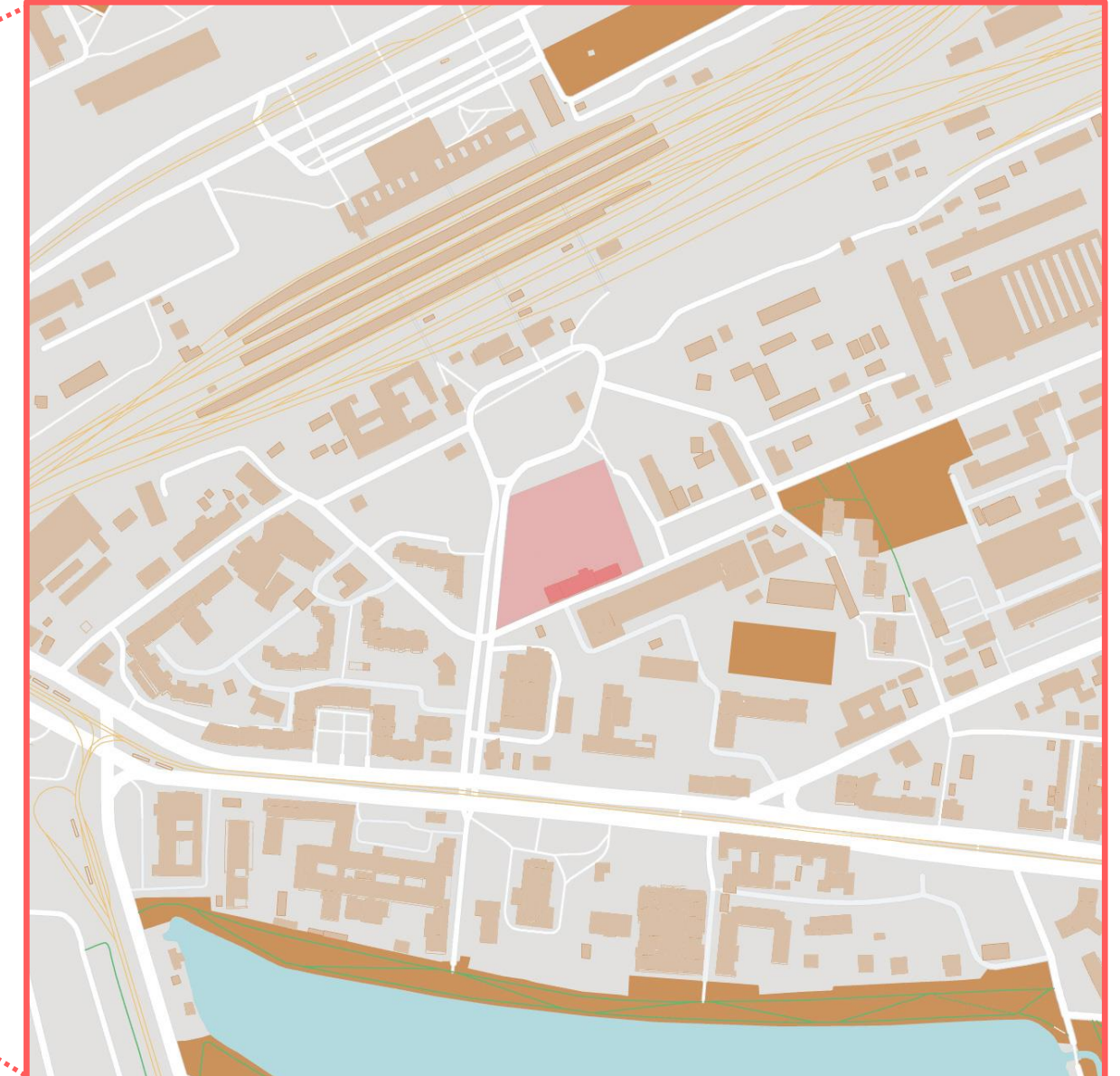
# AROUND THE GARDEN

# MASTER PLAN

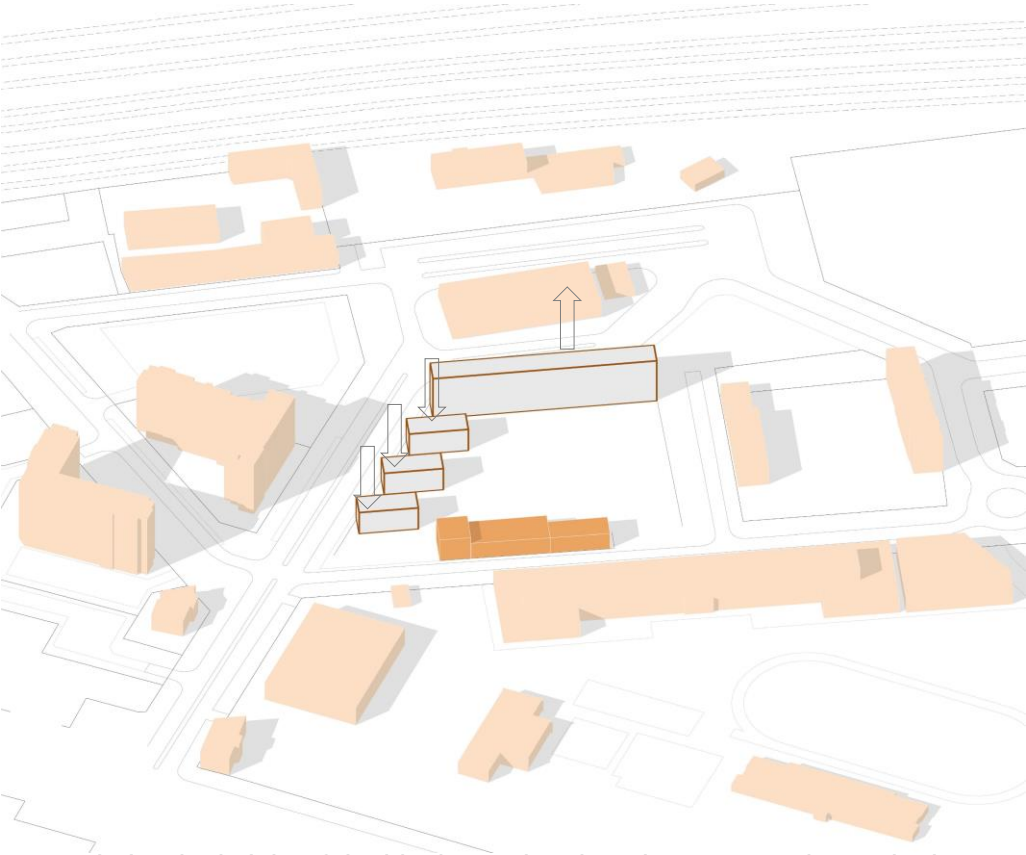
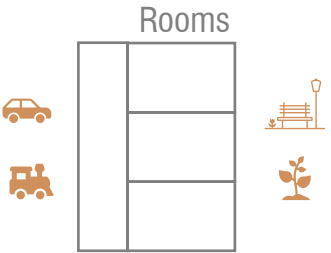
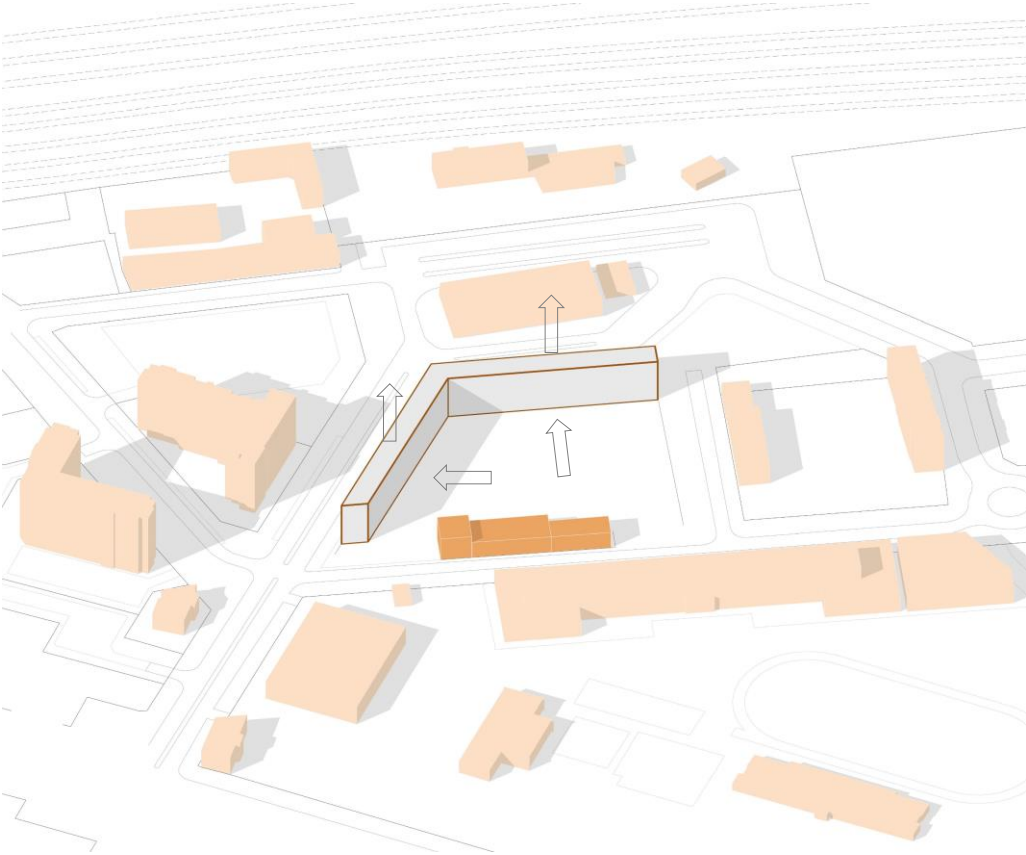
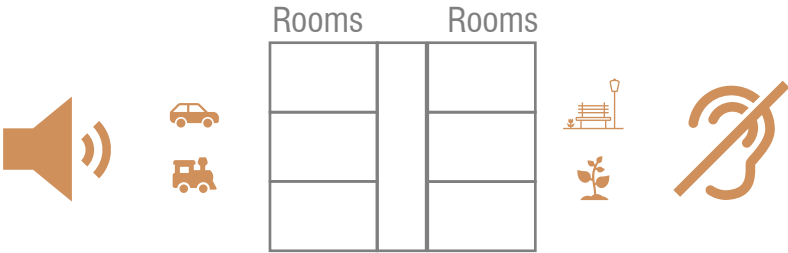
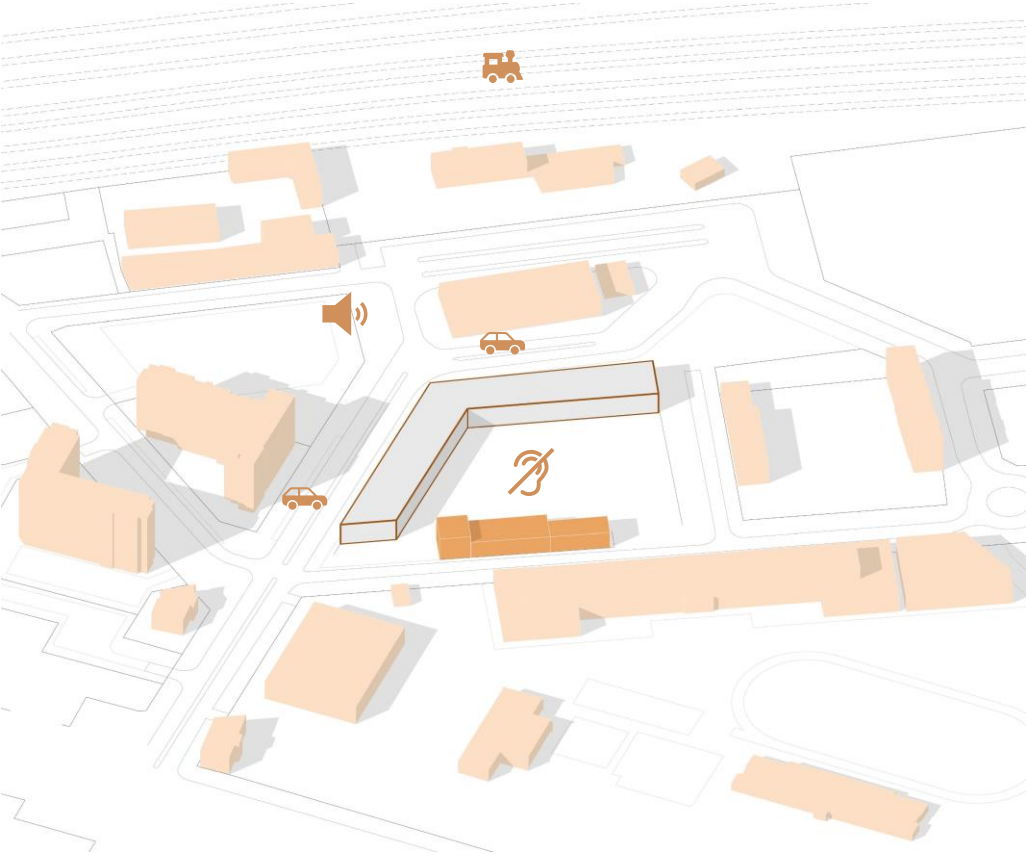
## Warsaw



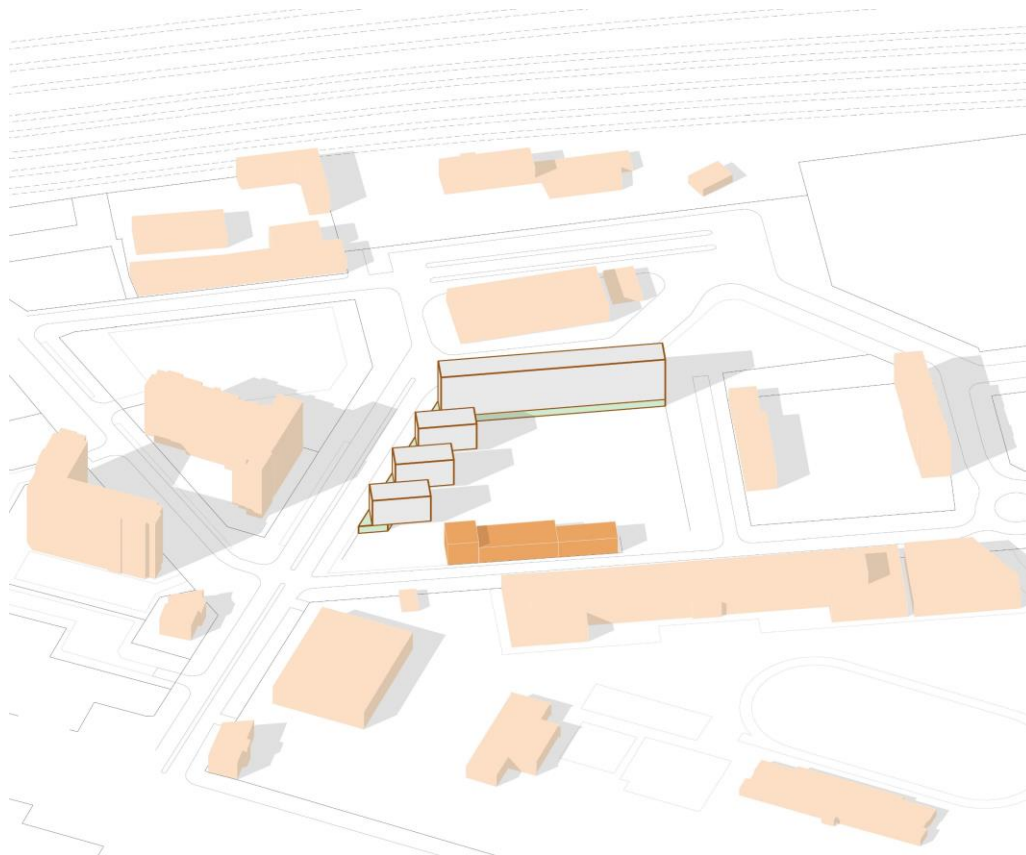
## Praga-Poludnie



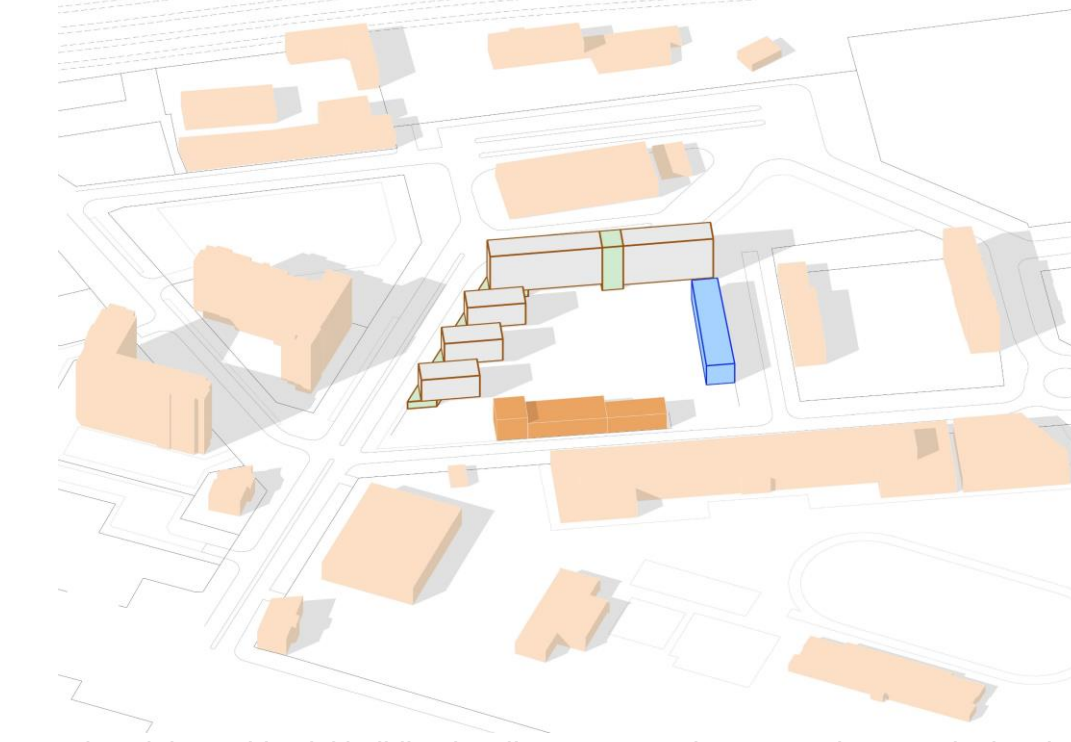
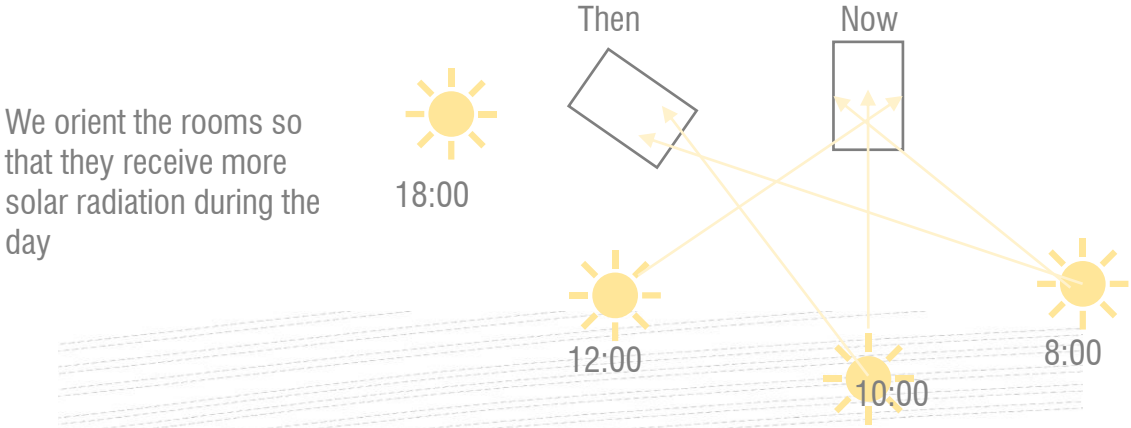
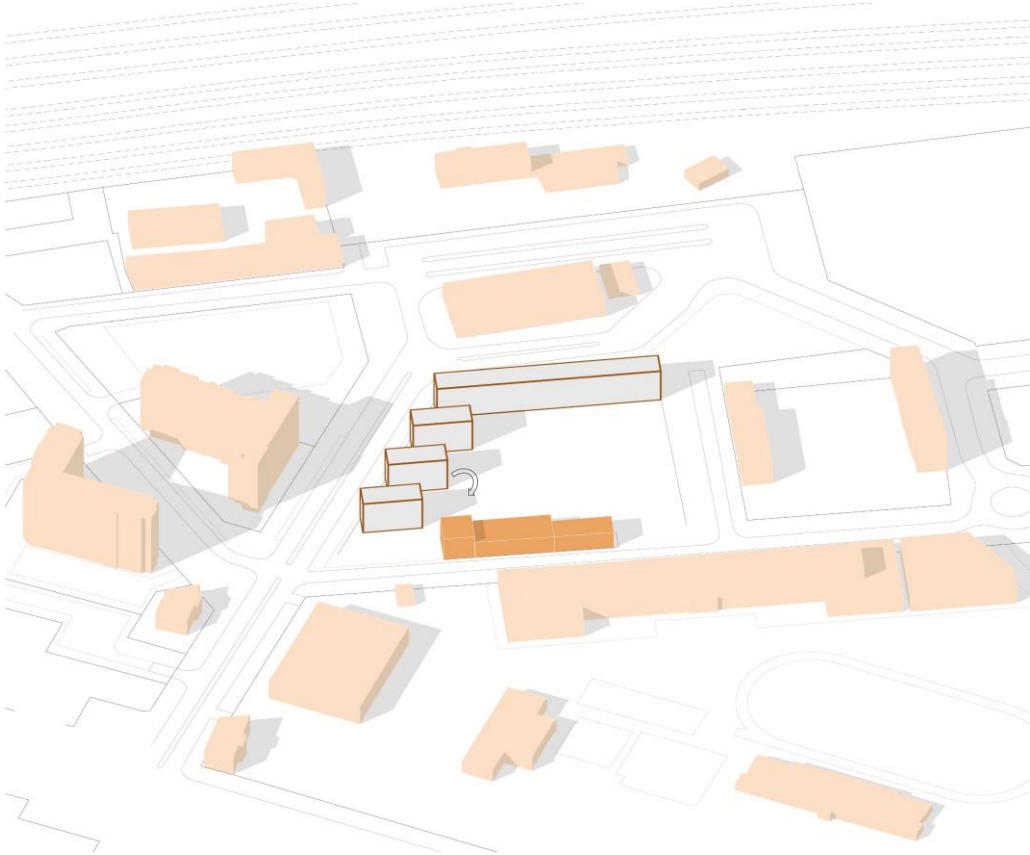
IDEA DEVELOPMENT



we optimize the height of the blocks so that they do not cause large shadows



we connect the blocks of the residence with the common areas



we placed the residential building in a linear way to give more privacy to the interior park



Entrance to residential building



Entrance to old factory



entrance



Parking entrance



Bike entrance

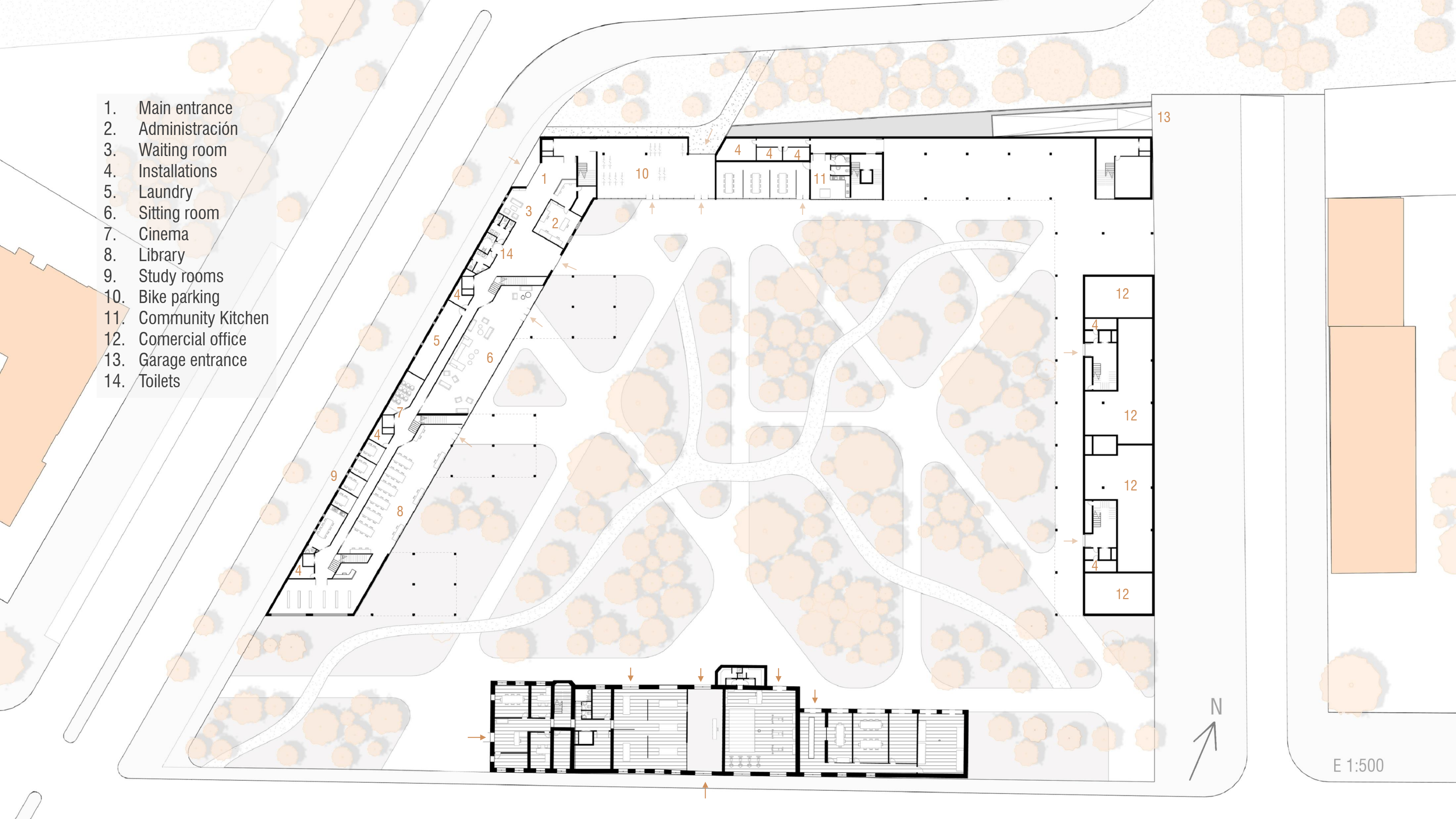
Entrance to the student residence



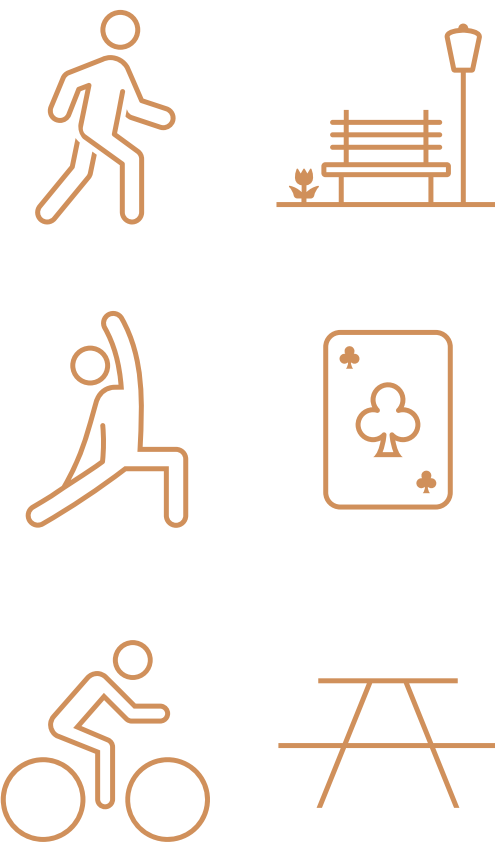
Park entrance



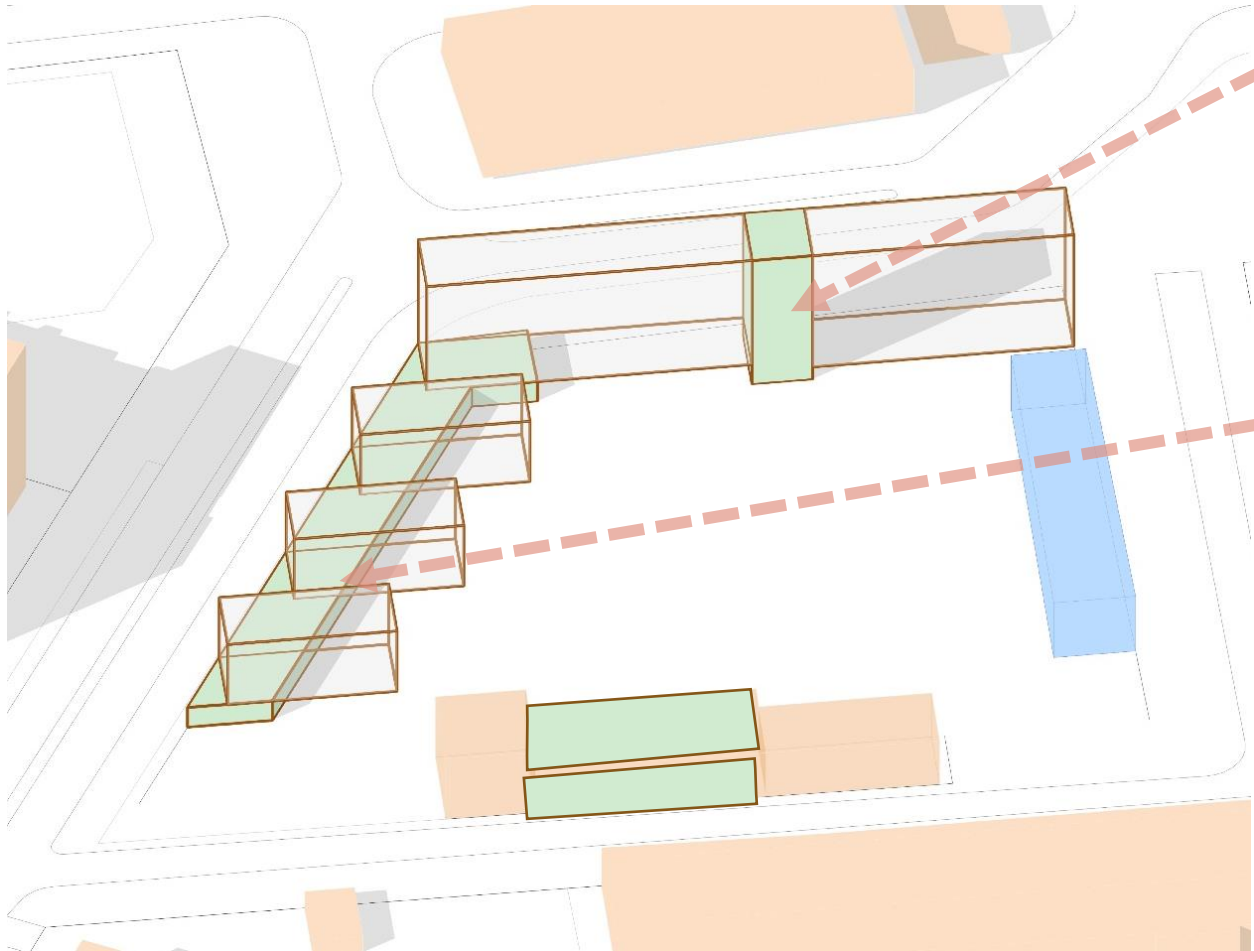
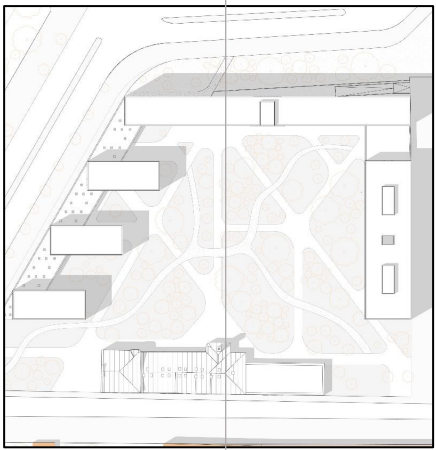
- 1. Main entrance
- 2. Administración
- 3. Waiting room
- 4. Installations
- 5. Laundry
- 6. Sitting room
- 7. Cinema
- 8. Library
- 9. Study rooms
- 10. Bike parking
- 11. Community Kitchen
- 12. Comercial office
- 13. Garage entrance
- 14. Toilets



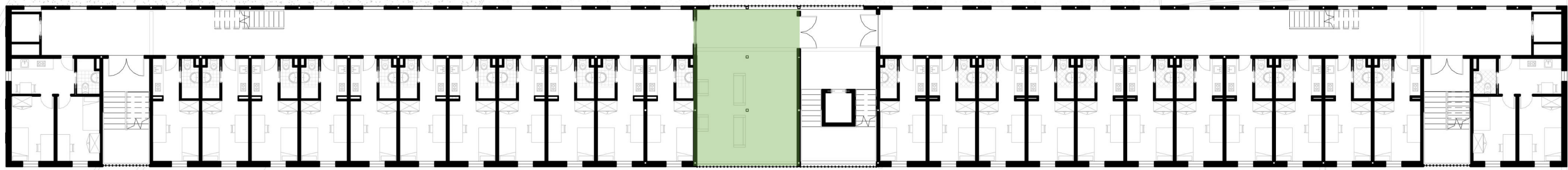
INDOOR PARK



COMMON SPACES

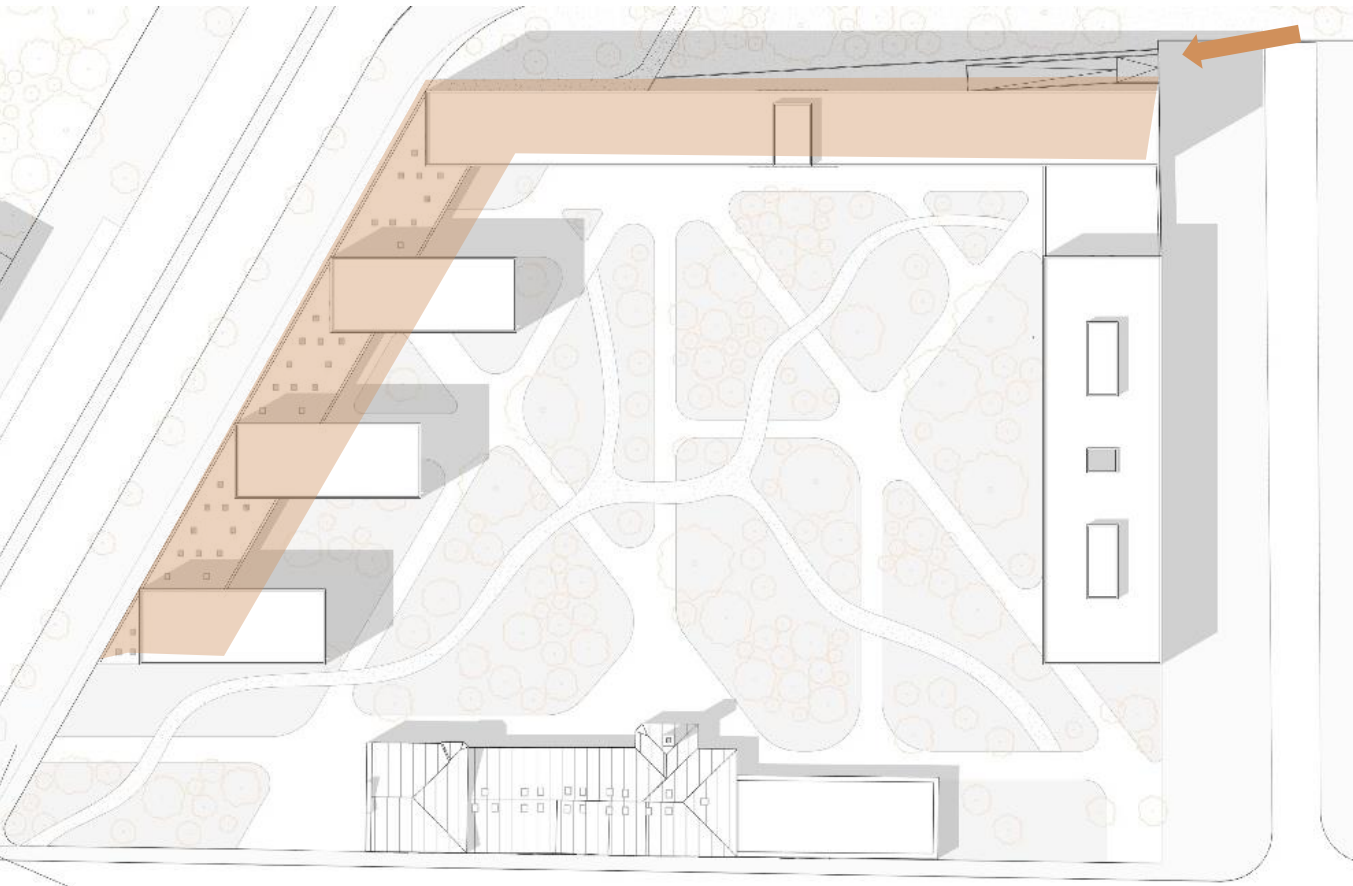


Section 3



Prototype 2

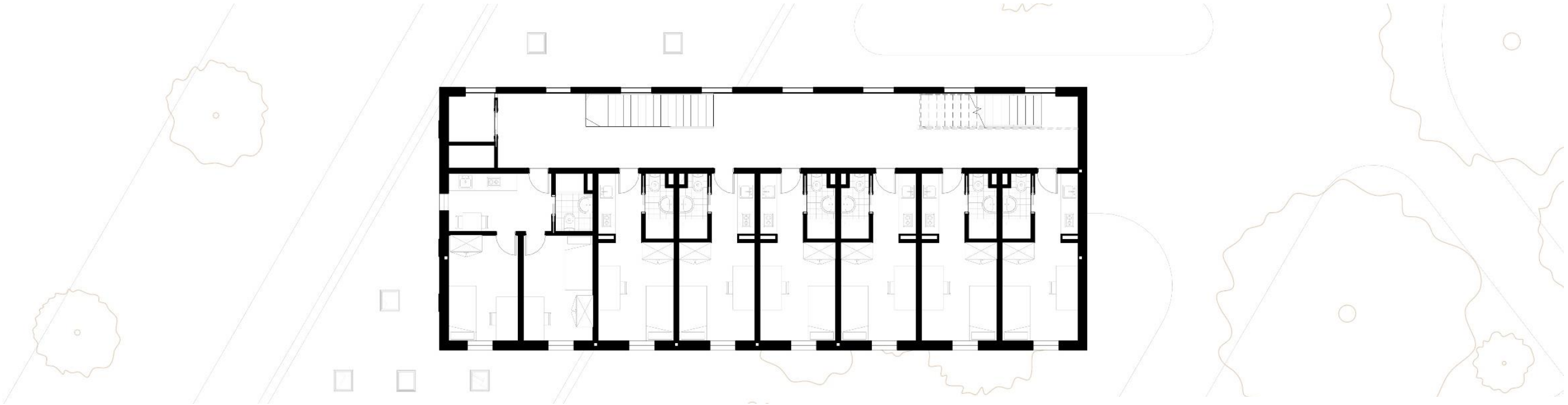
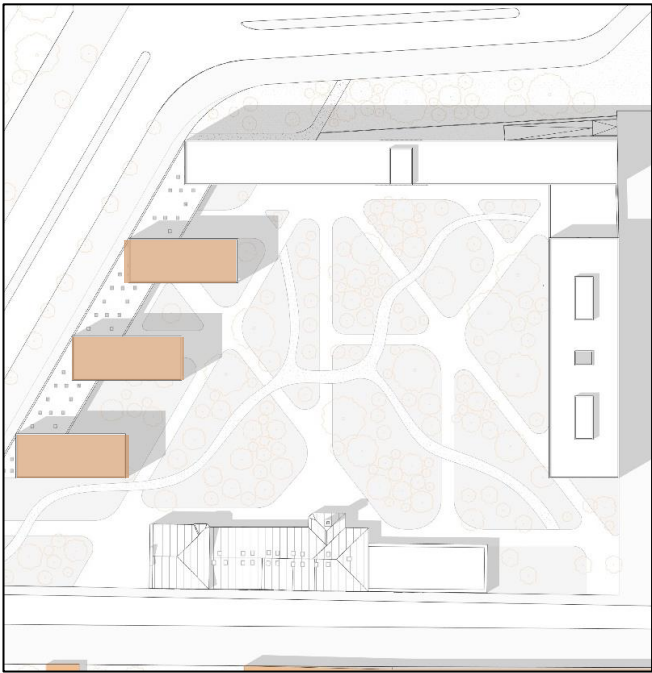
UNDERGROUND PARKING





E 1:500

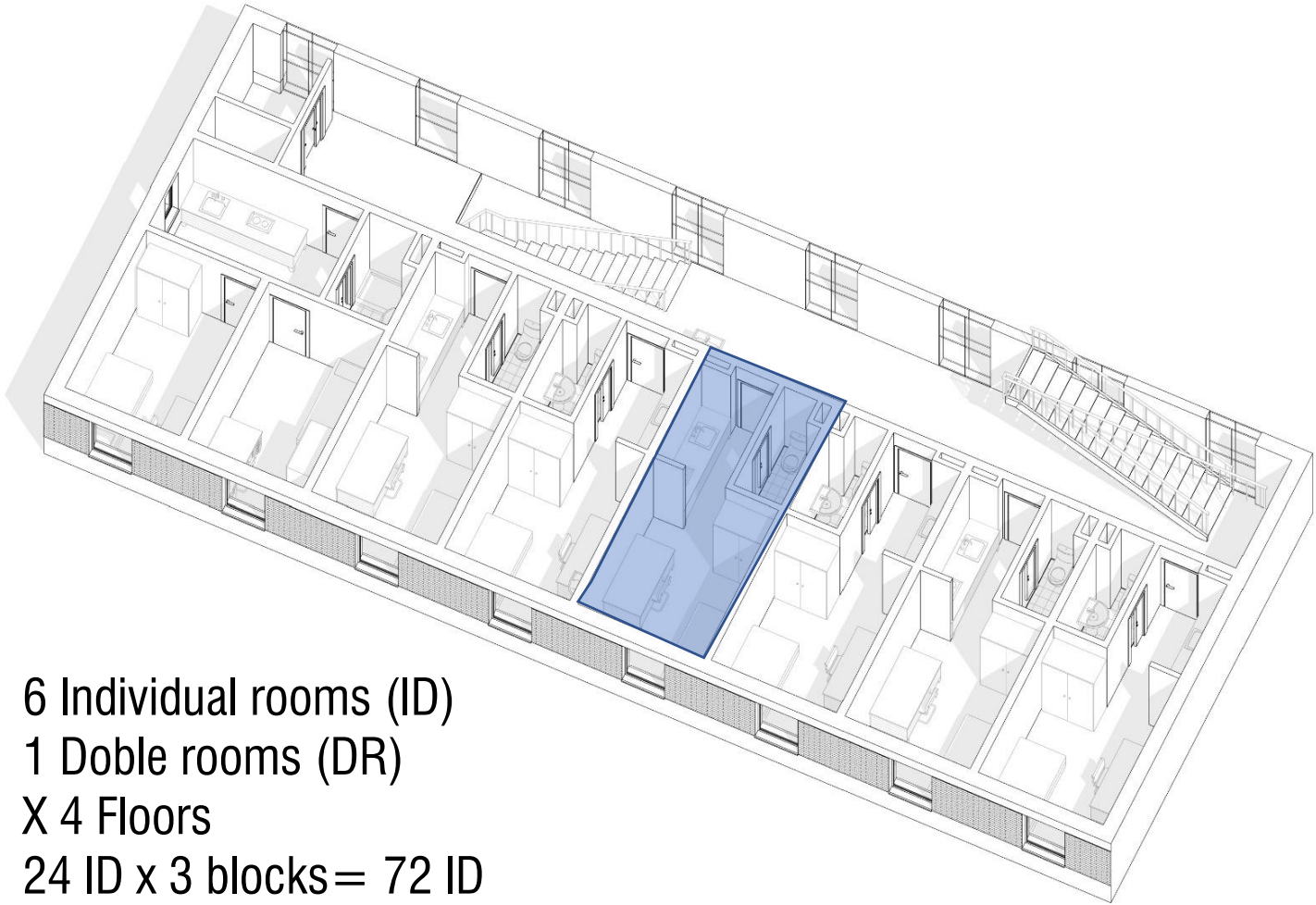
RECIDENCE



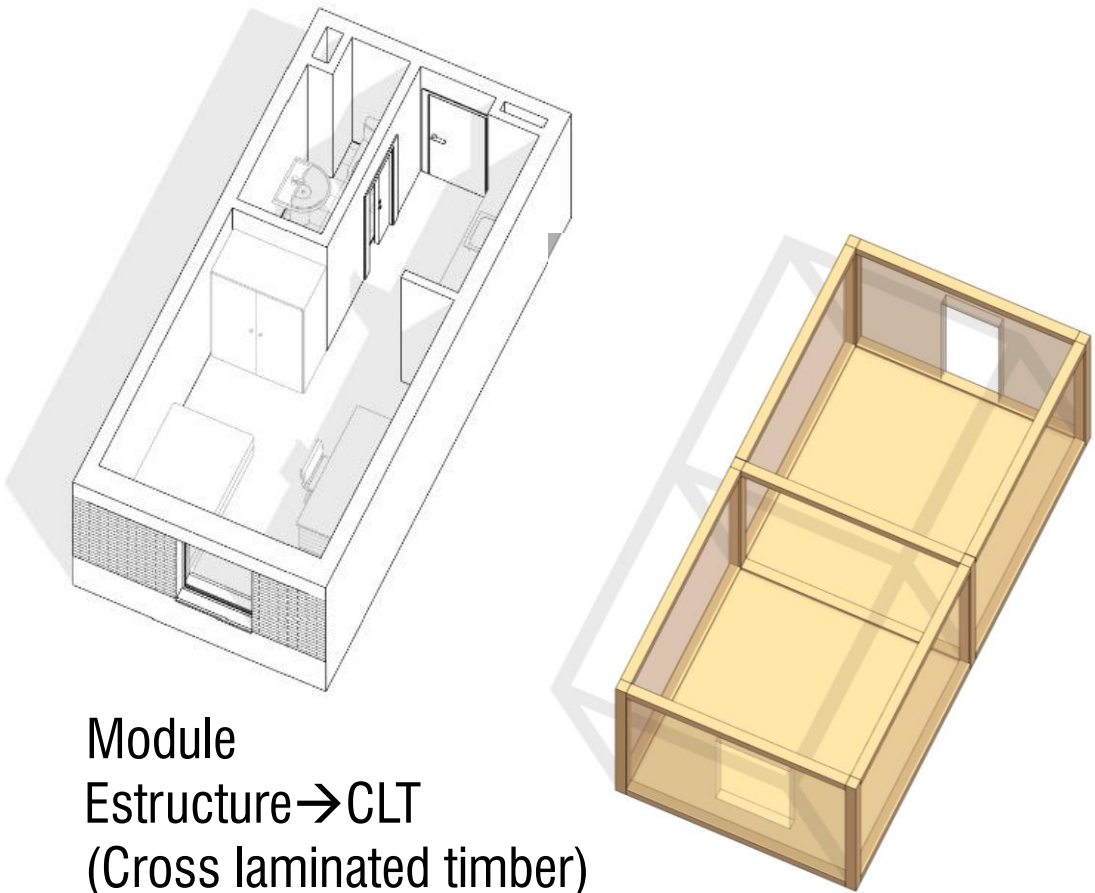
E 1:100



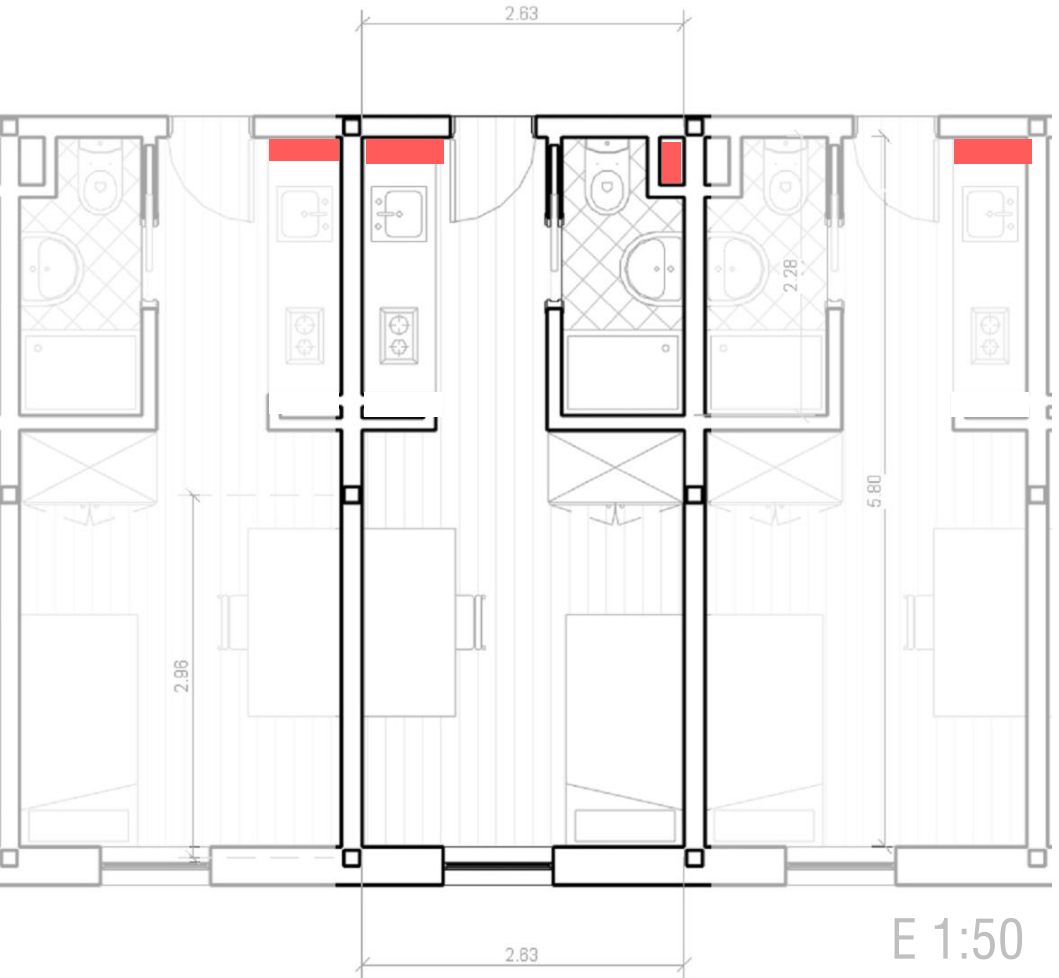
Installations



6 Individual rooms (ID)  
1 Doble rooms (DR)  
X 4 Floors  
24 ID x 3 blocks= 72 ID  
4 DR x 3 blocks= 12 DR

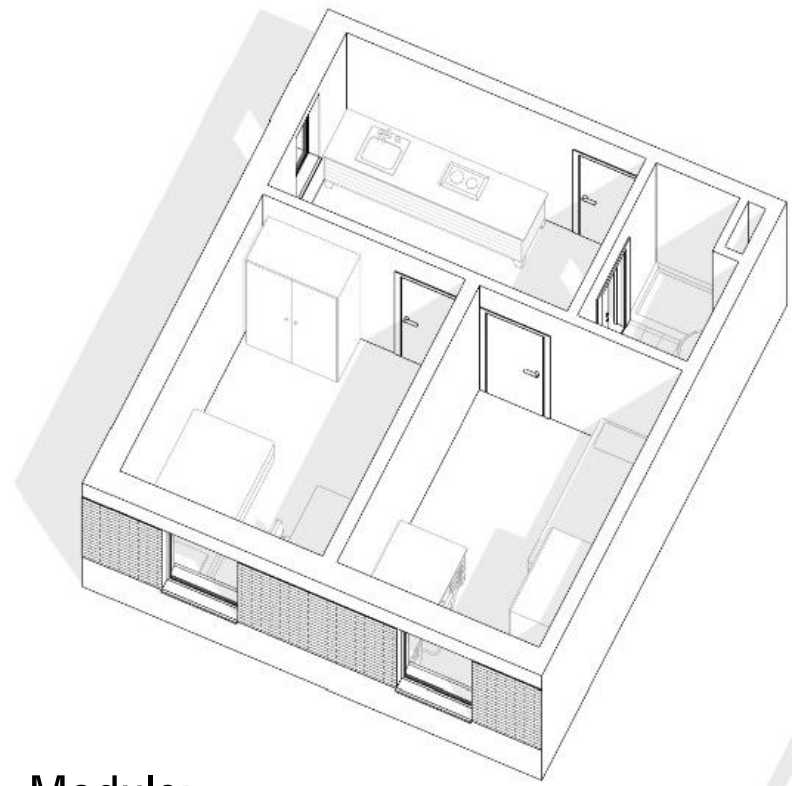
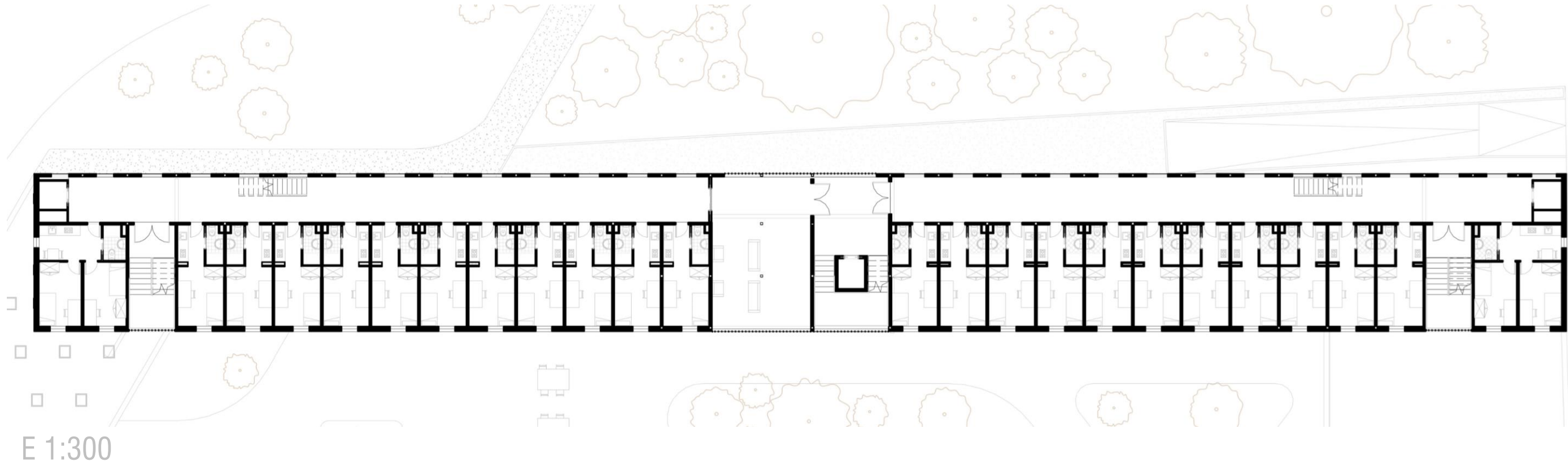
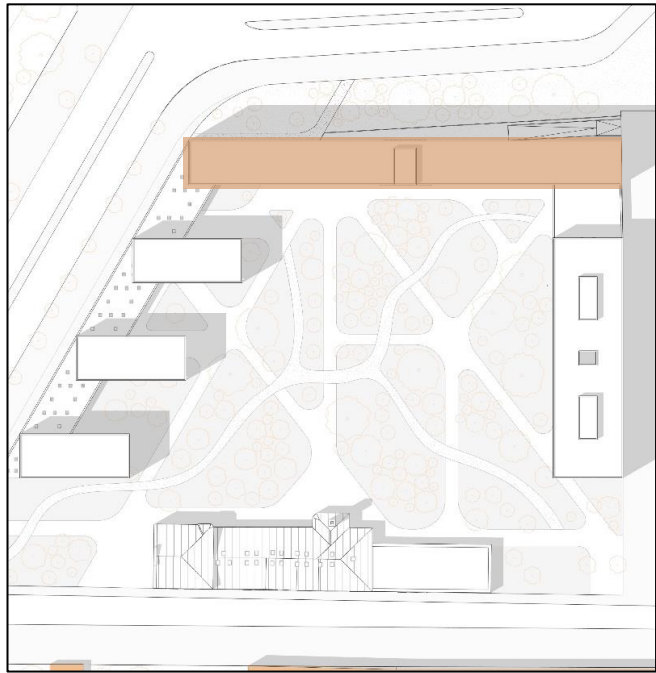


Module  
Estructure→CLT  
(Cross laminated timber)

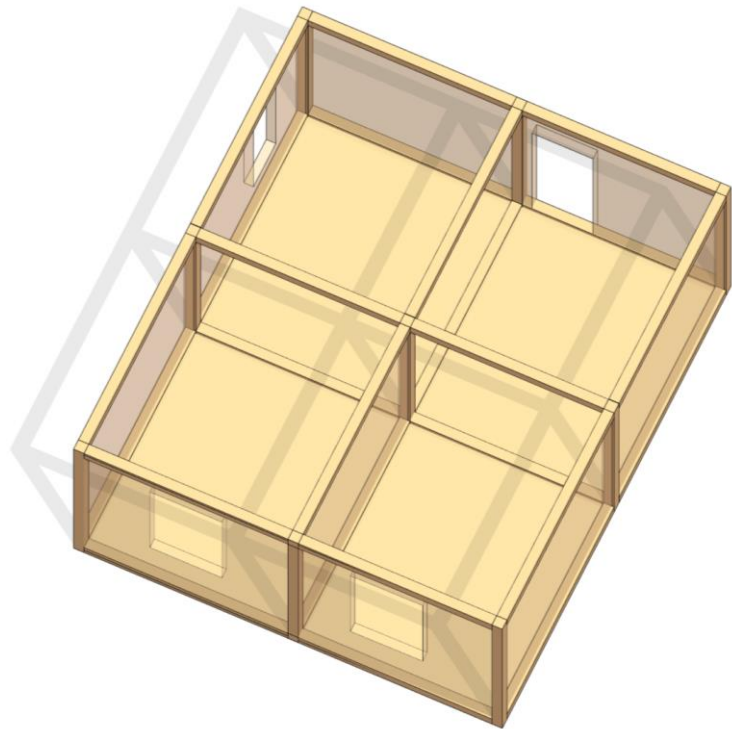


E 1:50

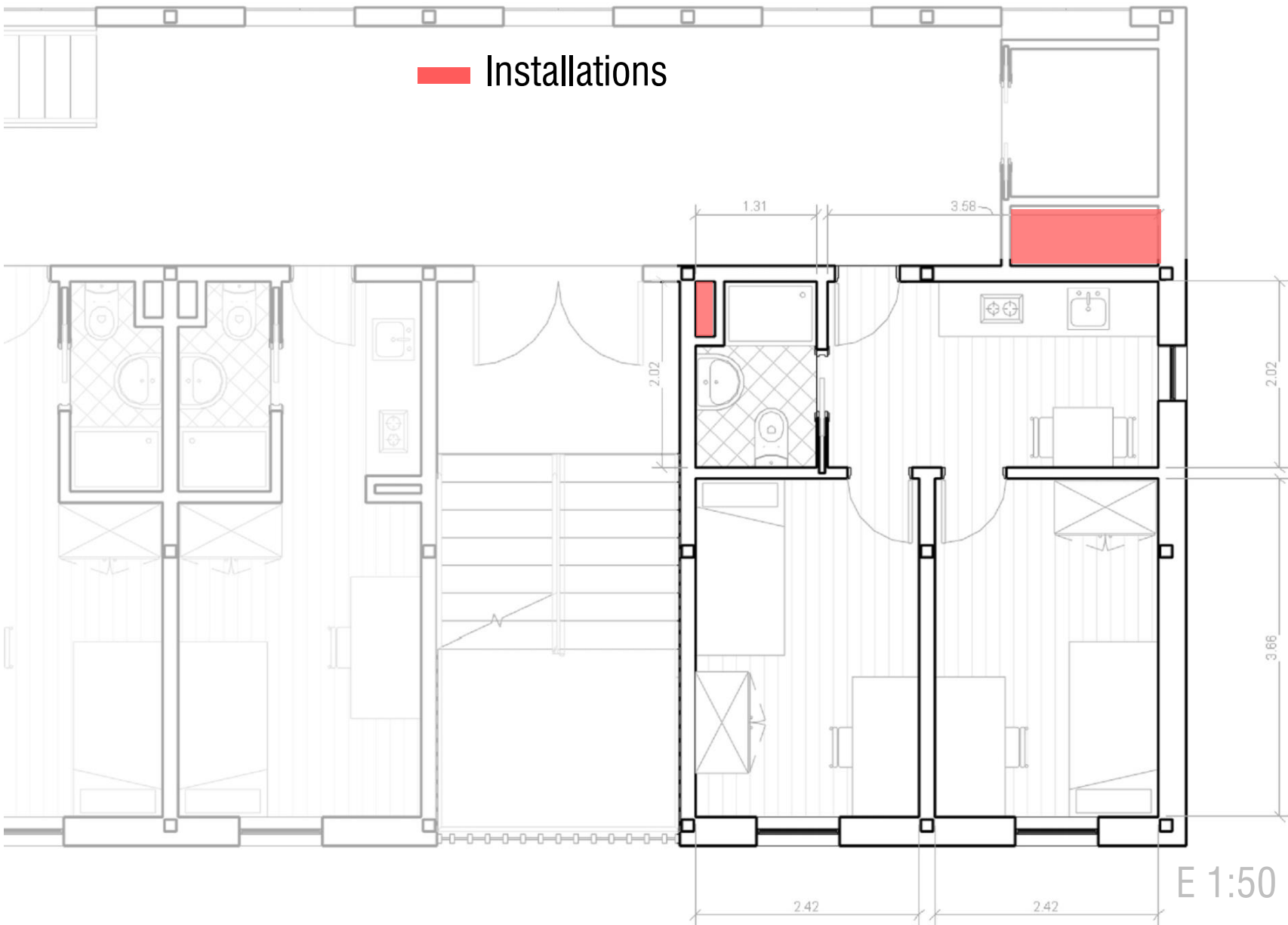
RECIDENCE



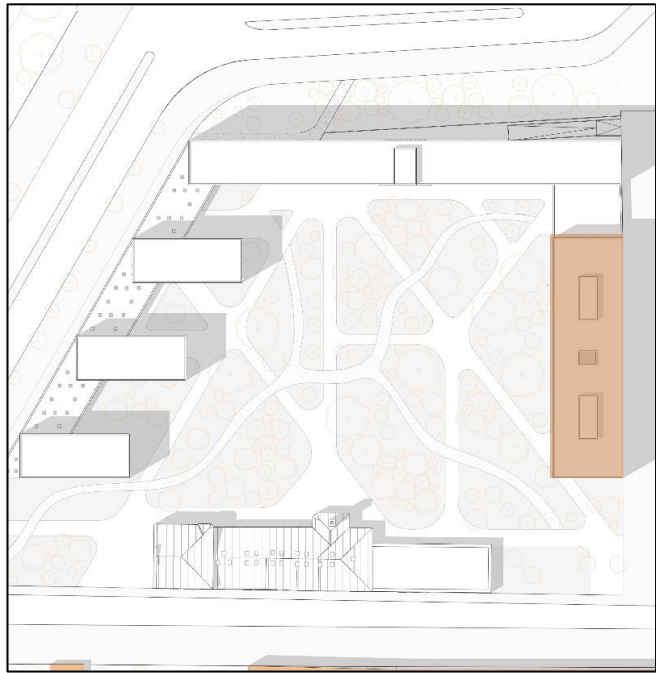
Module:  
11 Individual rooms (ID)  
2 Doble rooms (DR)  
X 7 floors  
77 ID x 3 blocks= 231 ID  
14 DR x 3 blocks= 42 DR



Estructure→CLT  
(Cross laminated timber)

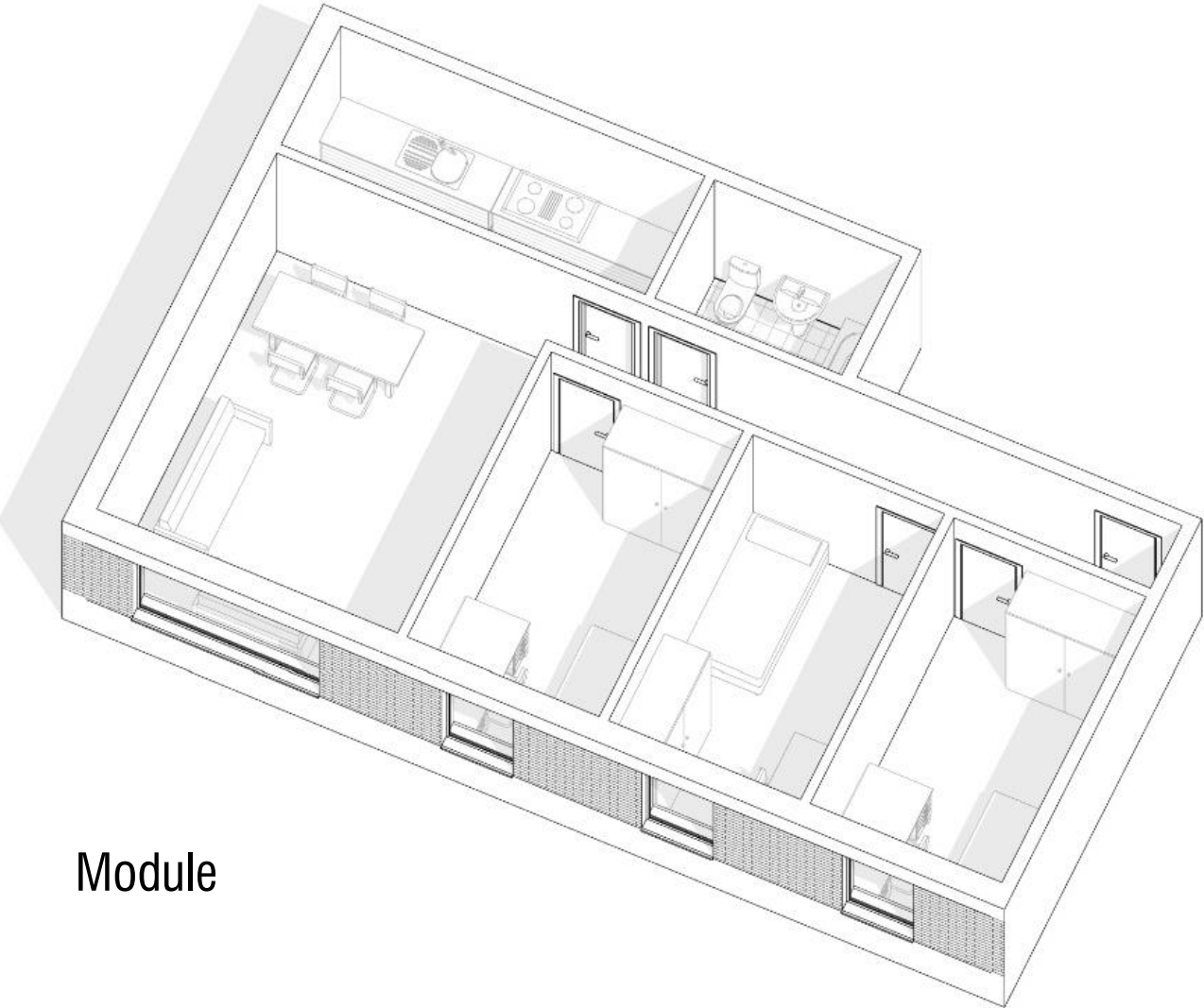


HOUSEHOLDS

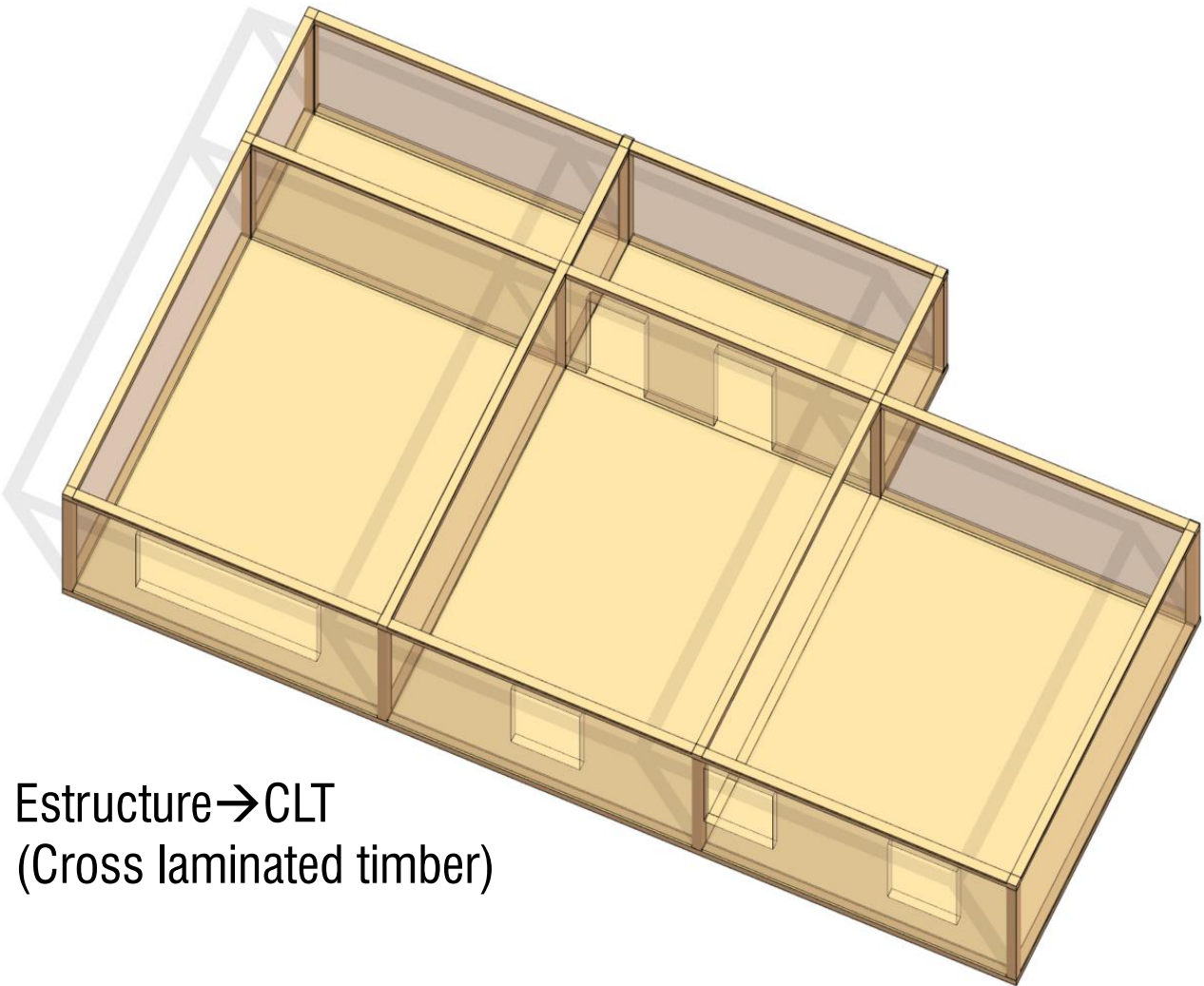


E 1:100

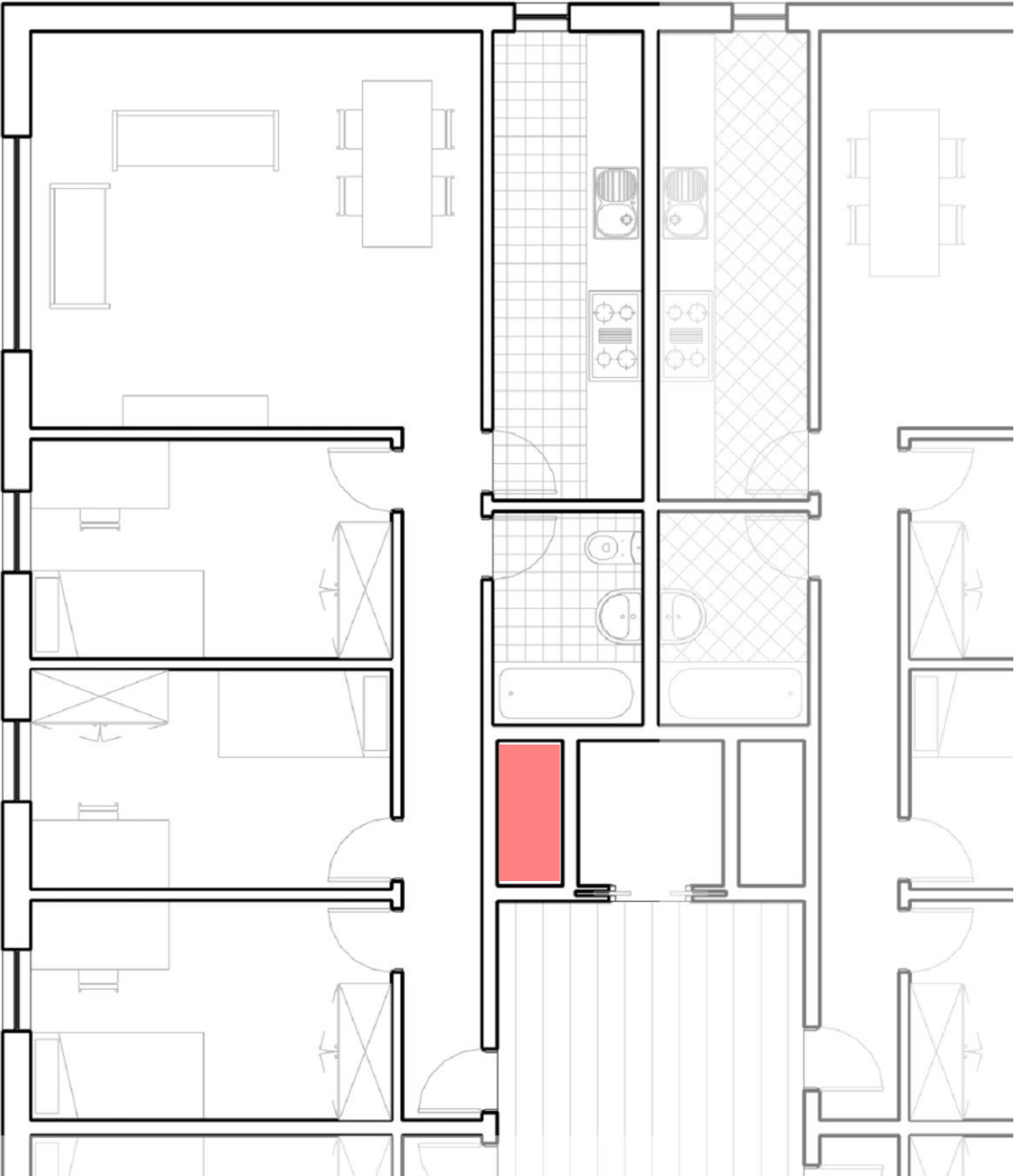
Installations



Module



Estructure→CLT  
(Cross laminated timber)

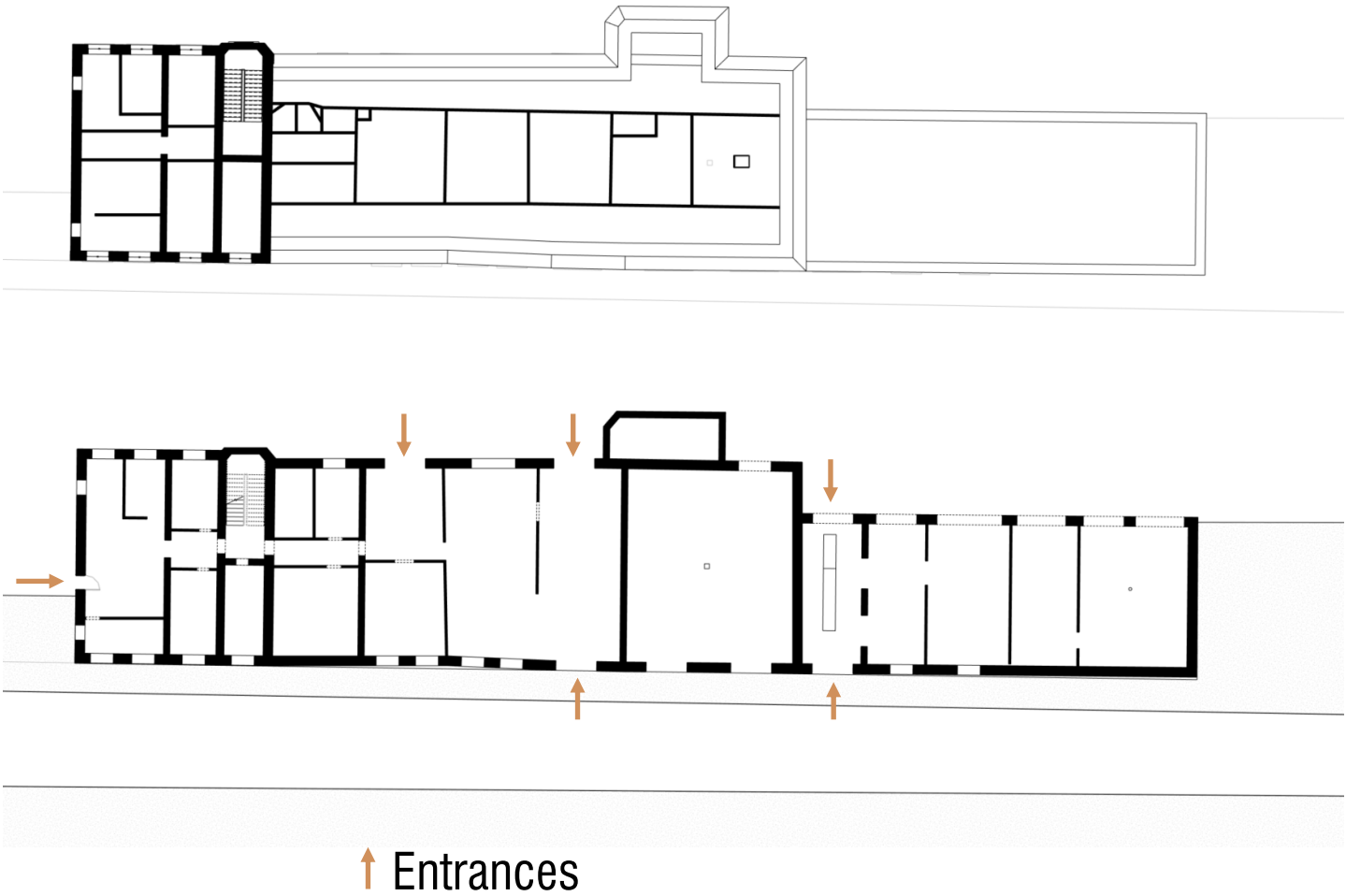


E 1:50

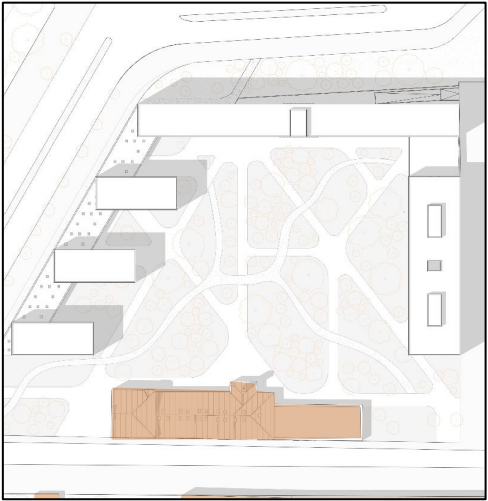
Old Factory



Actual state



We remove the plaster from the facade, leaving the facing brick



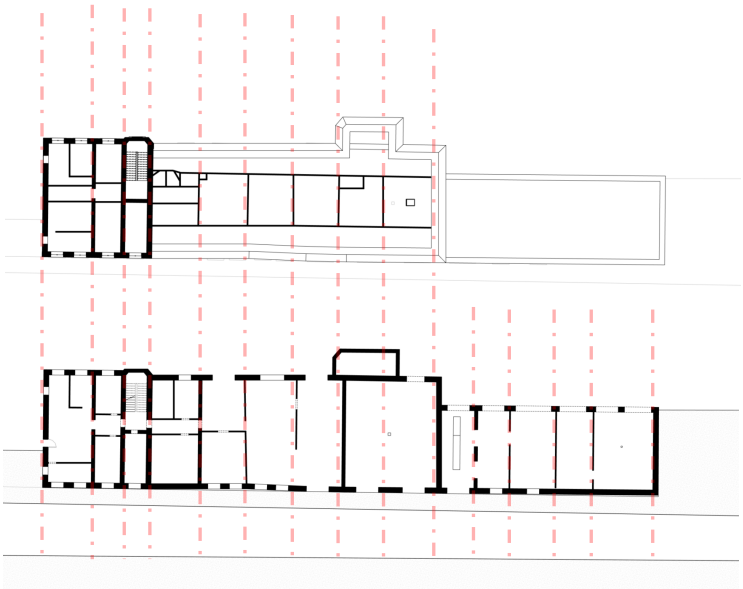
First floor

After our general analysis we decide the uses that the factory will have inside

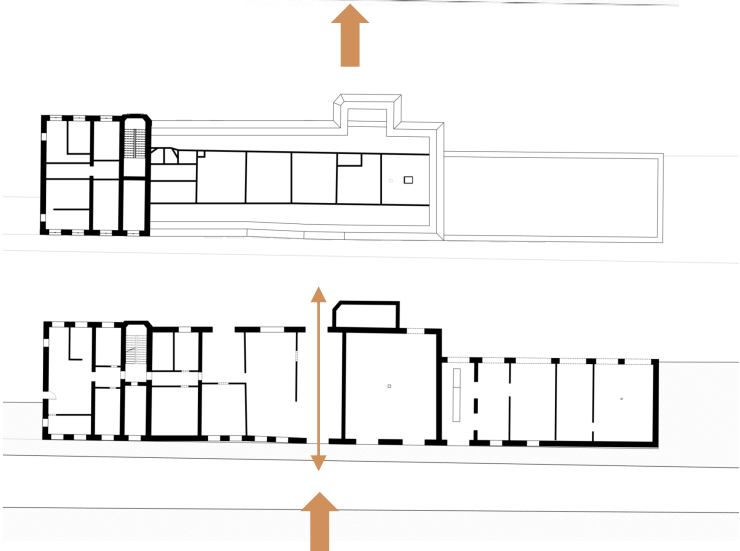
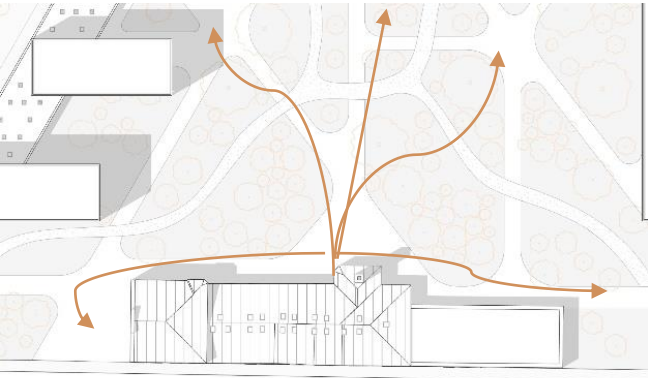
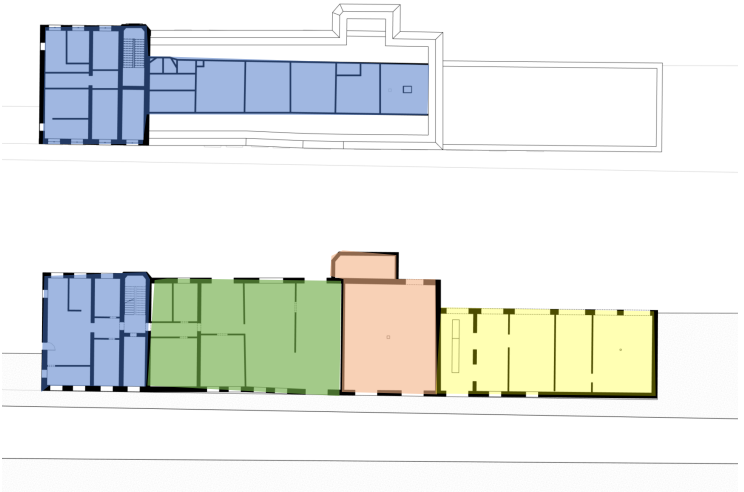


We introduce the main entrance to the plot between two axes that are in the middle of the factory (This is not the only entrance to the interior of the plot)

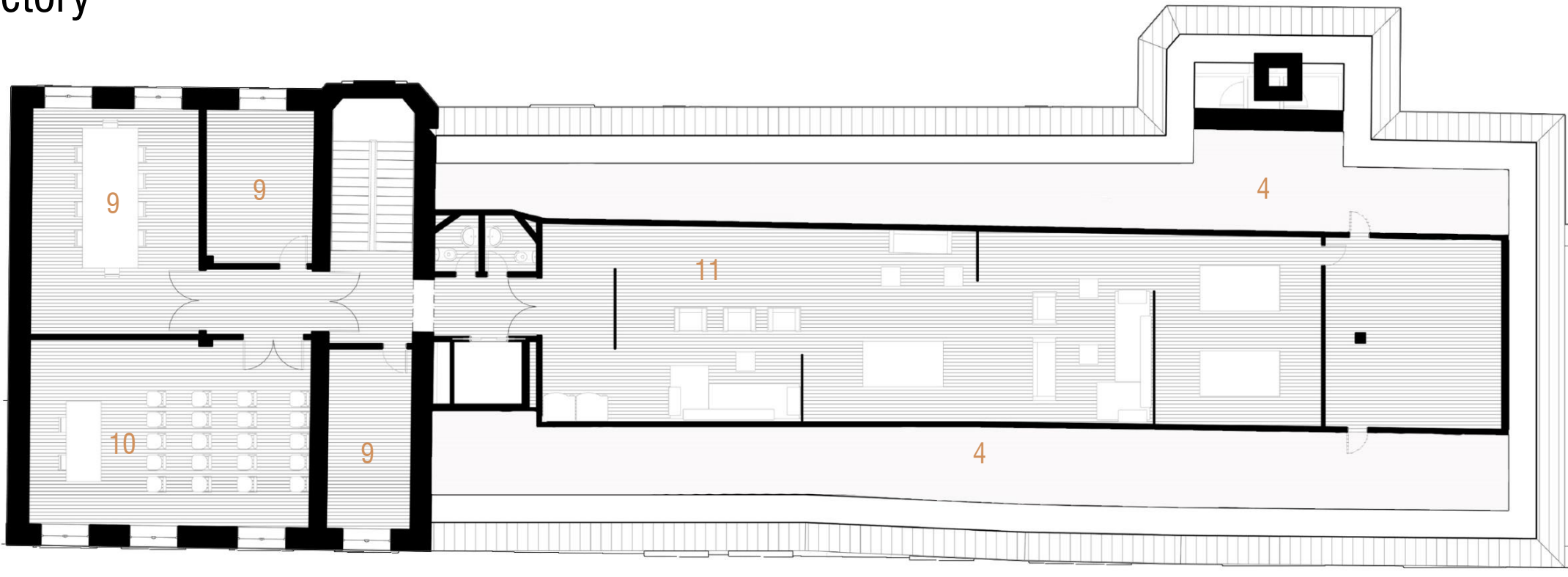
We observe that the factory is divided into several axes



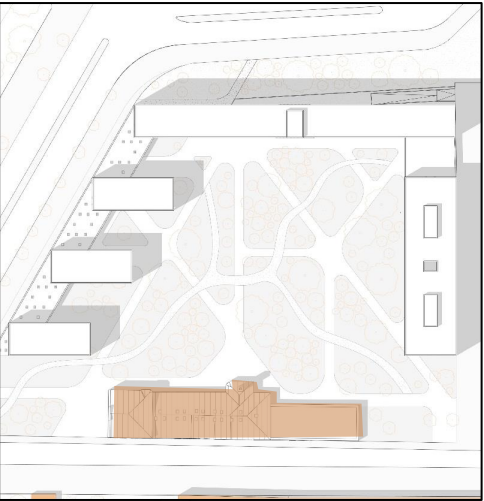
We see that the factory has 4 different spaces. which we are going to try to maintain by giving them correct uses



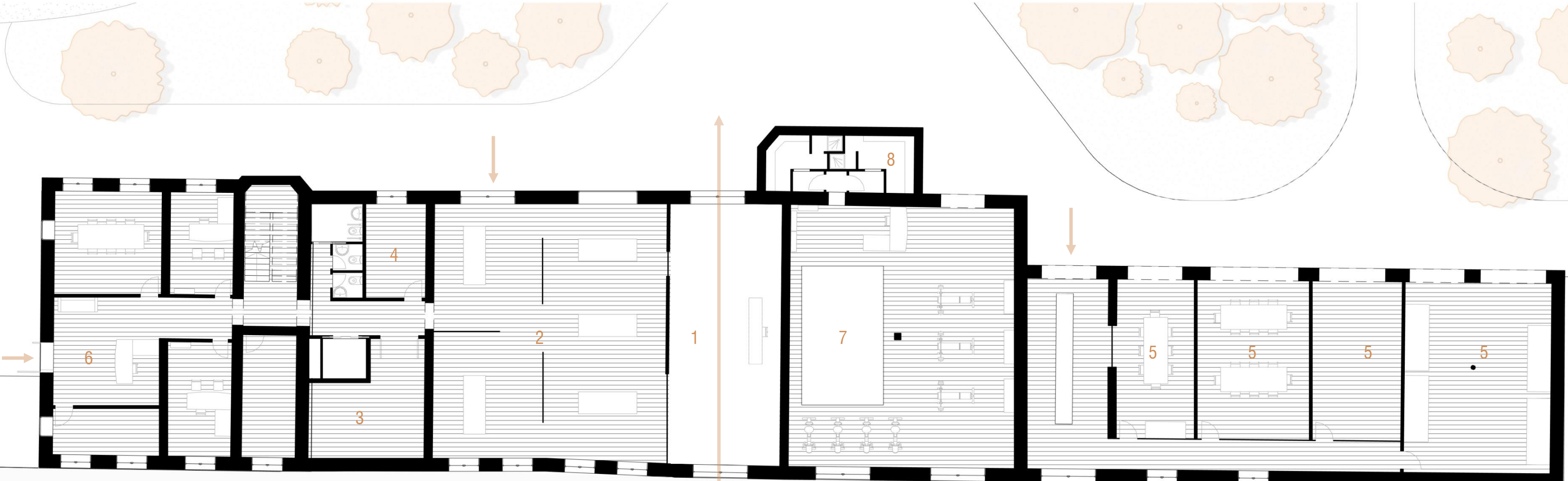
Old Factory



- 1. Main entrance
- 2. Museum
- 3. Installations
- 4. Warehouse
- 5. Workshop
- 6. Association
- 7. Gym
- 8. Dressing rooms
- 9. Meeting room
- 10. Conference room
- 11. Sitting room



First floor

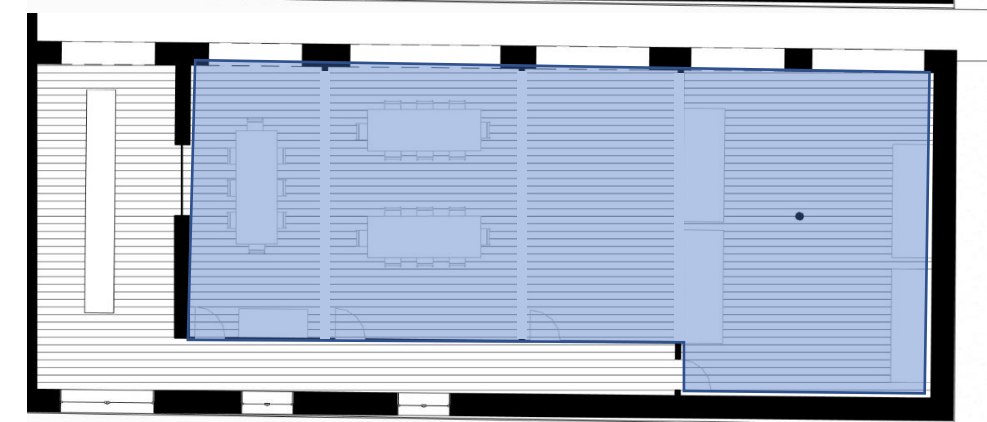
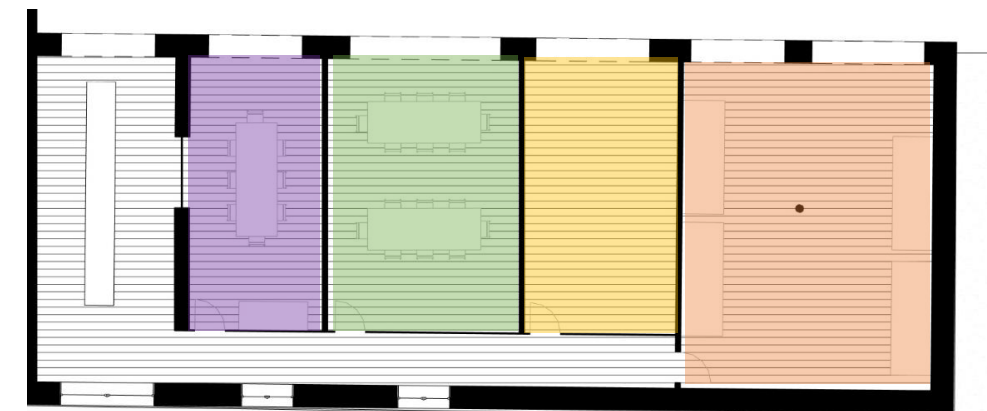
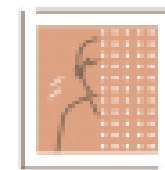


Ground floor



SGG PRIVA-LITE

We maintain the axes  
of the upper floor  
incorporating opaque  
glass partitions

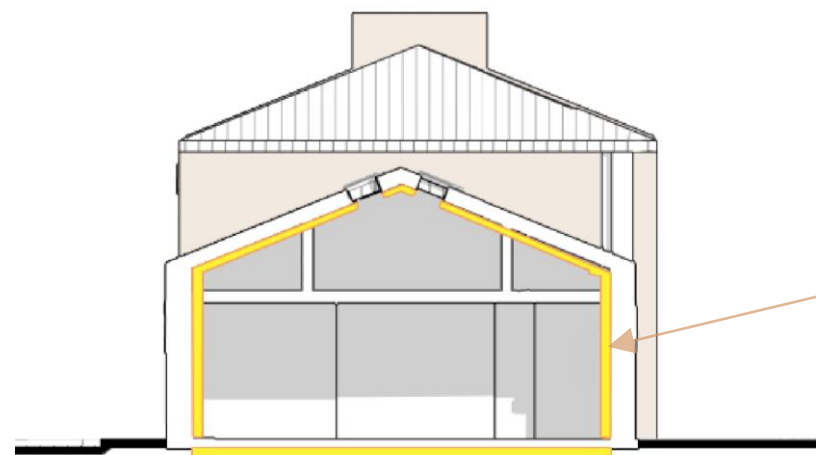


wooden mobile partitions

## FACTORY REMODELLING



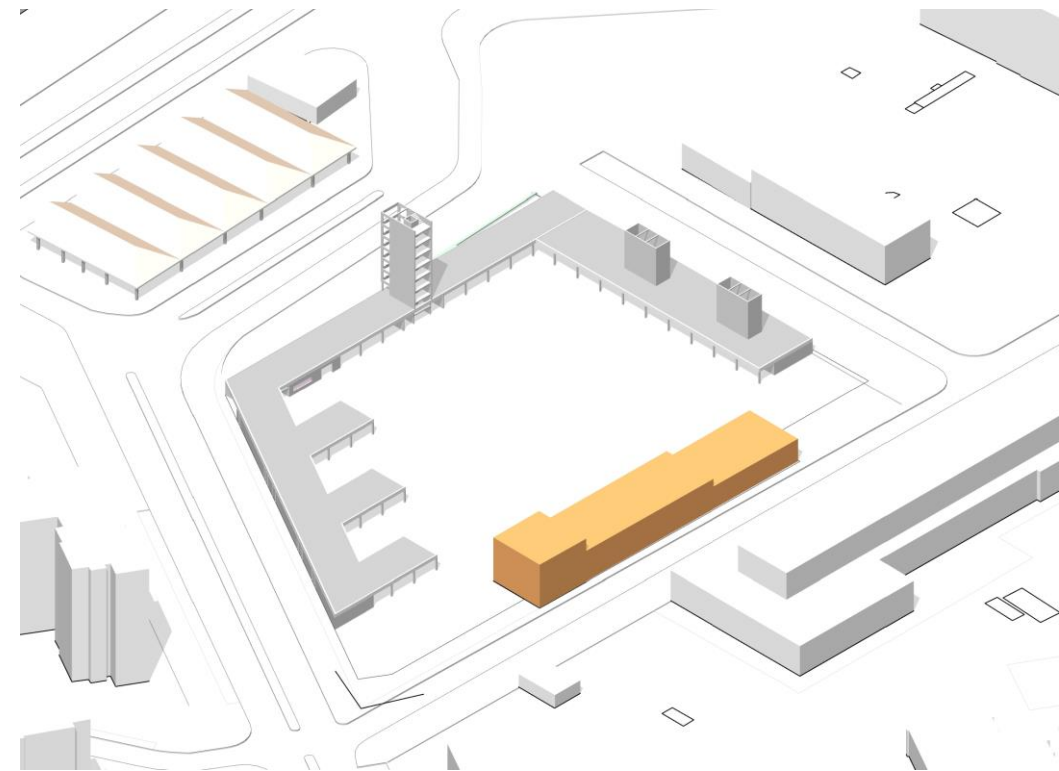
Facing that improves the quality  
of the air inside the factory



7 cm GLASS WOOL  
ISOVER G3



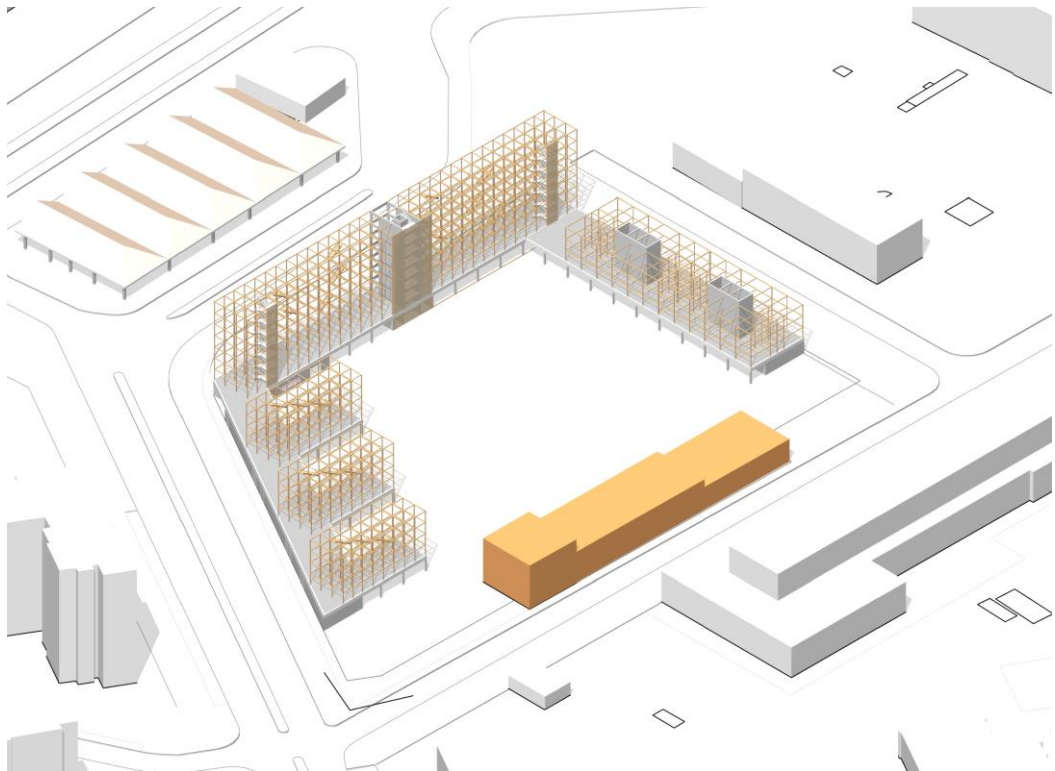
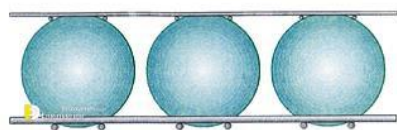
ESTRUCTURAL SYSTEM



ULTIBAT® GREEN: LOW-CARBON CONCRETE

Advantajes:

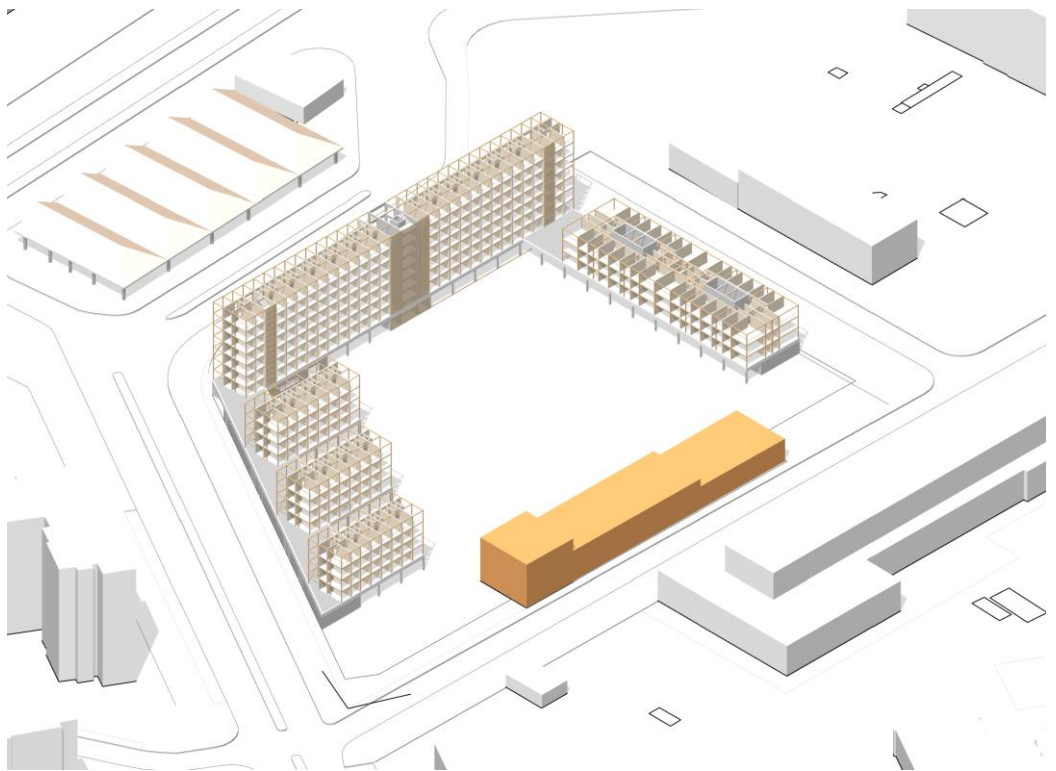
- 1. Carbon emissions 10-30% lower than standard concrete.
- 2. Thermal qualities
- 3. Reversibility spaces



CROSS-LAMINATED TIMBER (CLT)

Advantajes: Exterior Walls

- 1. Potencial carbon benefit
- 2. Fire resitence (2hrs burn rate)
- 3. Carbon stored in the wood
- 4. Avoided greenhouse gas emission
- 5. French sustainability law (at least 50% timber)
- 6. Thermal confort



Exterior walls



Partition walls



Joinsts

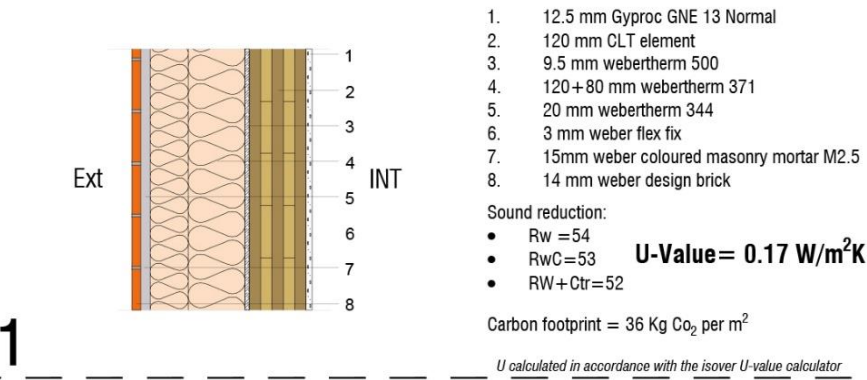


Roofs

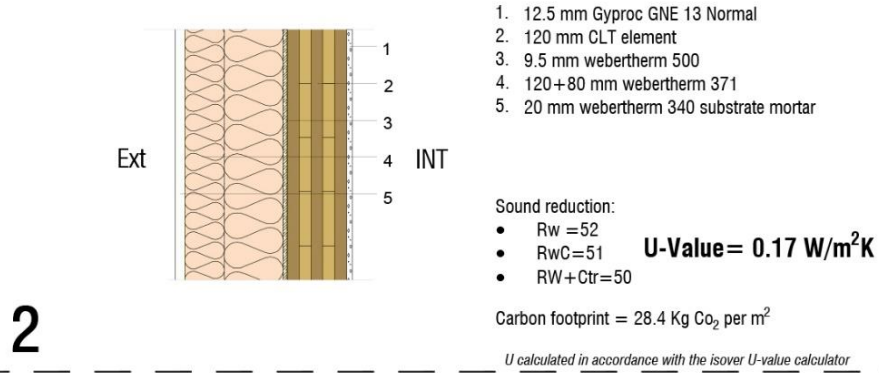


# DETAILS

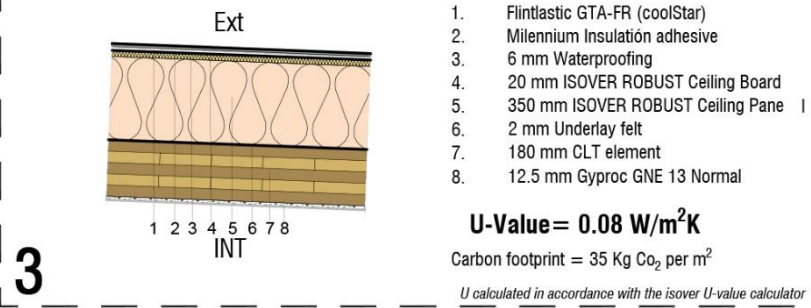
## FACADE 2:Weber Serporoc Premium 32 and Weber Desing Bricks



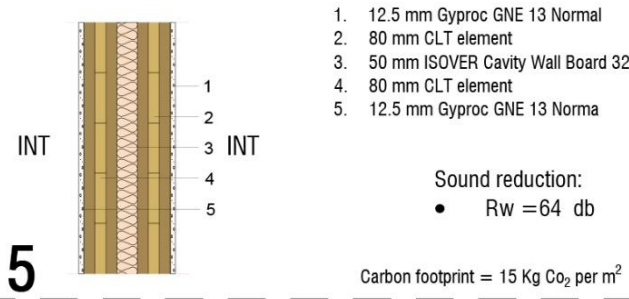
## FACADE 1:Weber Serporoc Premium 32



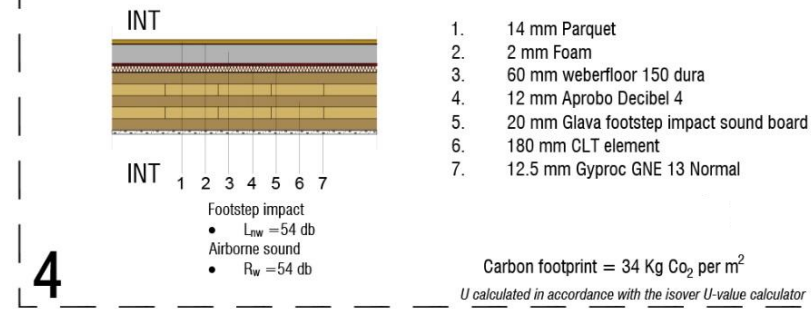
## LOW-PITCHED ROOFS: Exterior insulation for low-pitched roofs and CertainTeed Flintlastic® GTA CoolStar®



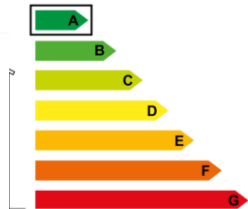
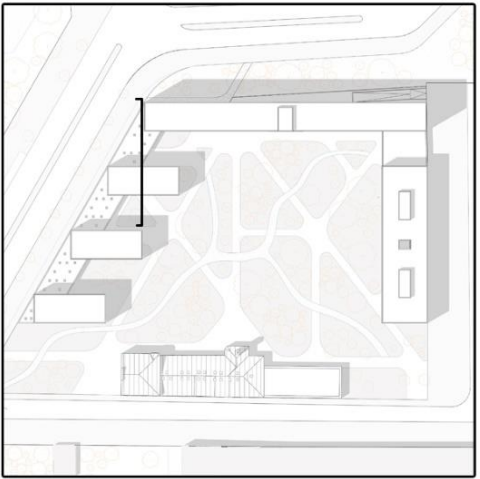
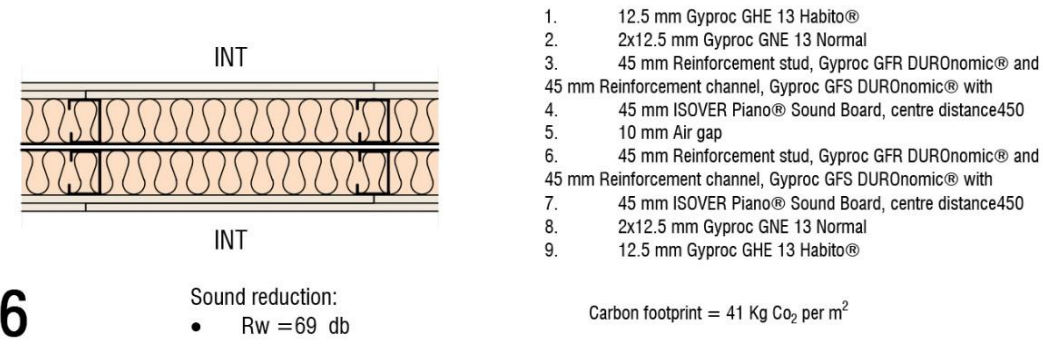
## PARTITION WALL :Gyproc gne and isover cavity wall board clt 80MM



## INTERMEDIATE JOISTITS:Saint-Gobain silent Floor® Weber floor screed,aprobo decibel and Saint-Gobain glass wool



## Non-load-bearnig partition wall: Gyproc ghe, gyproc gne and gyproc gd with isover piano

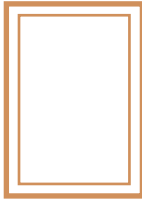


WINDOWS

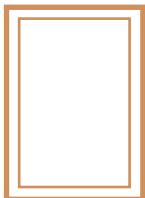
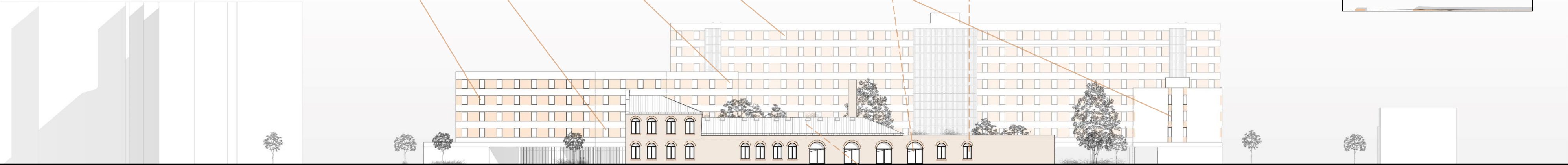
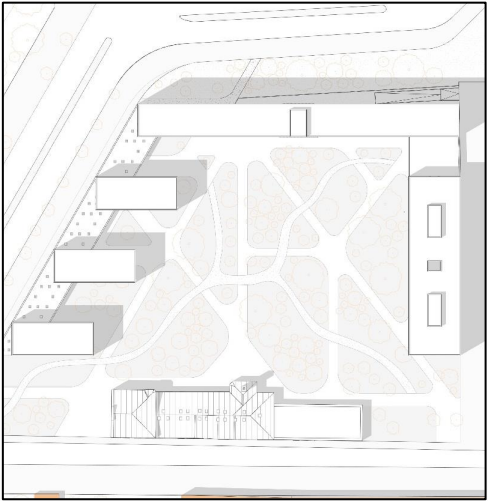


SGG CLIMATOP LUX

U=0,7 W/m2 K



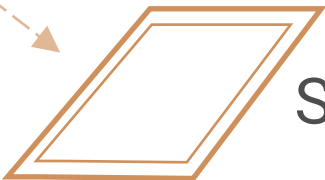
ECLAZ® 4/16/4/14/4 U=0,6 W/m2 K



SGG Cool-Lite skin 144 II U=1,1 W/m2 K

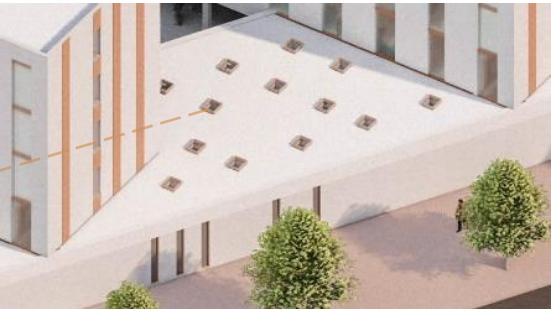


SWISSPACER AIR

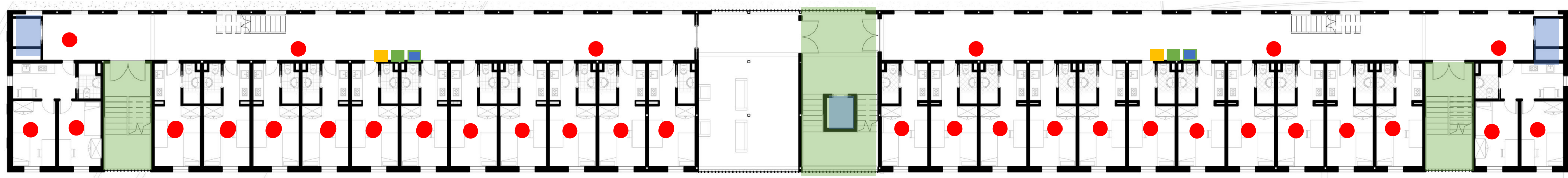


SGG BIOCLEAN®

We have placed windows on the roofs of the common spaces so that they are illuminated throughout the day.



FIRE SAFELY



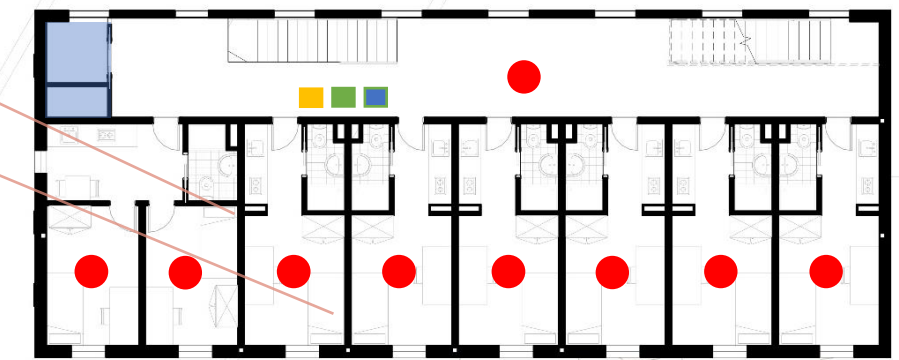
-  Ladders
-  Elevators

**Placo® shaftwall® System**  
Fire resistance:  
-EI180  
-Laminated plasterboard (Palcoflam and coreboard)  
-Elevator shaft clousures and Stairwell clousures.

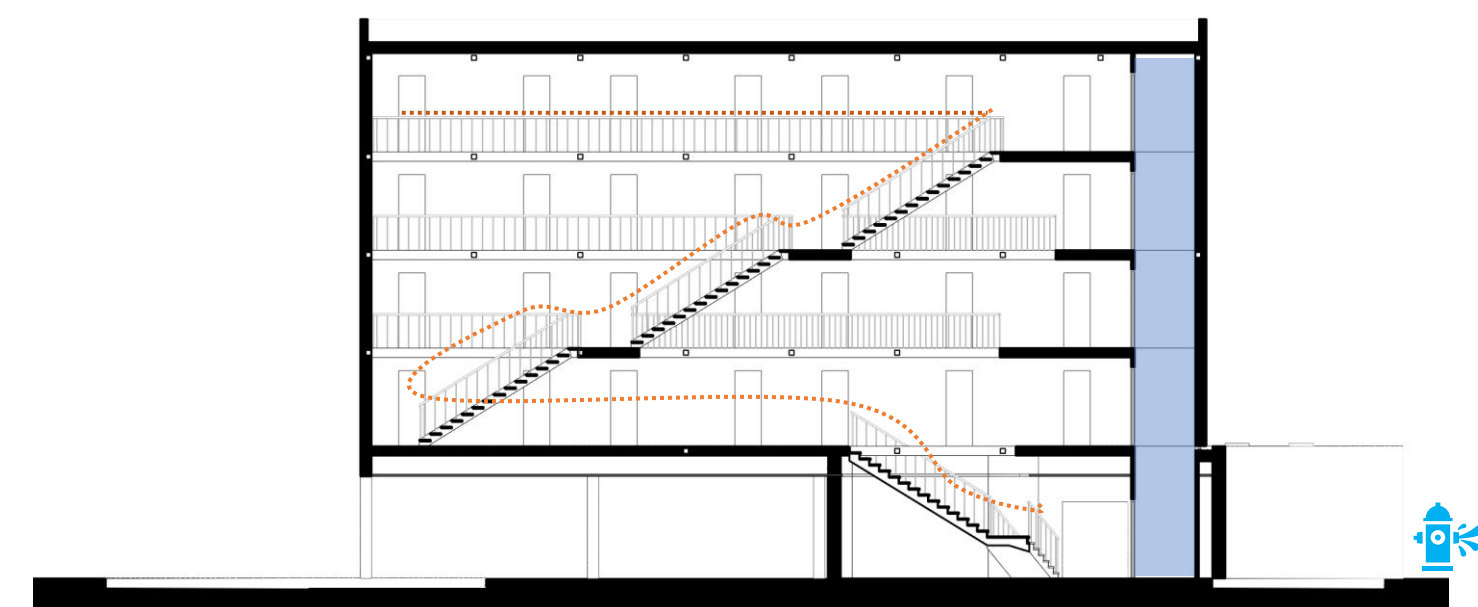


**CLT (cross Laminated timber)**  
Fire resistance: REI 90 Load 6 kN/m2 at a span width of 5 metres

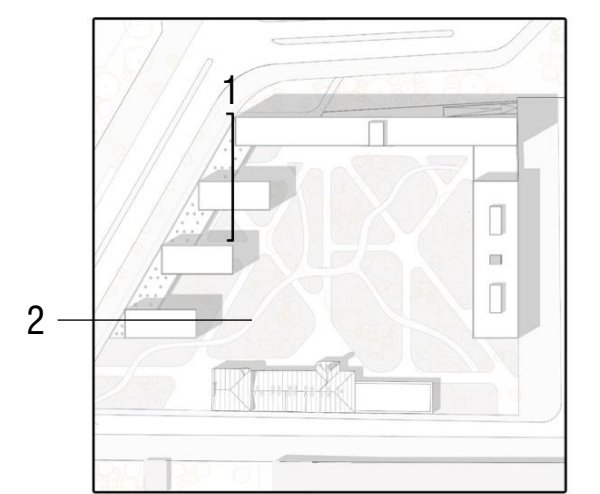
Prototype 2











Prototype 1

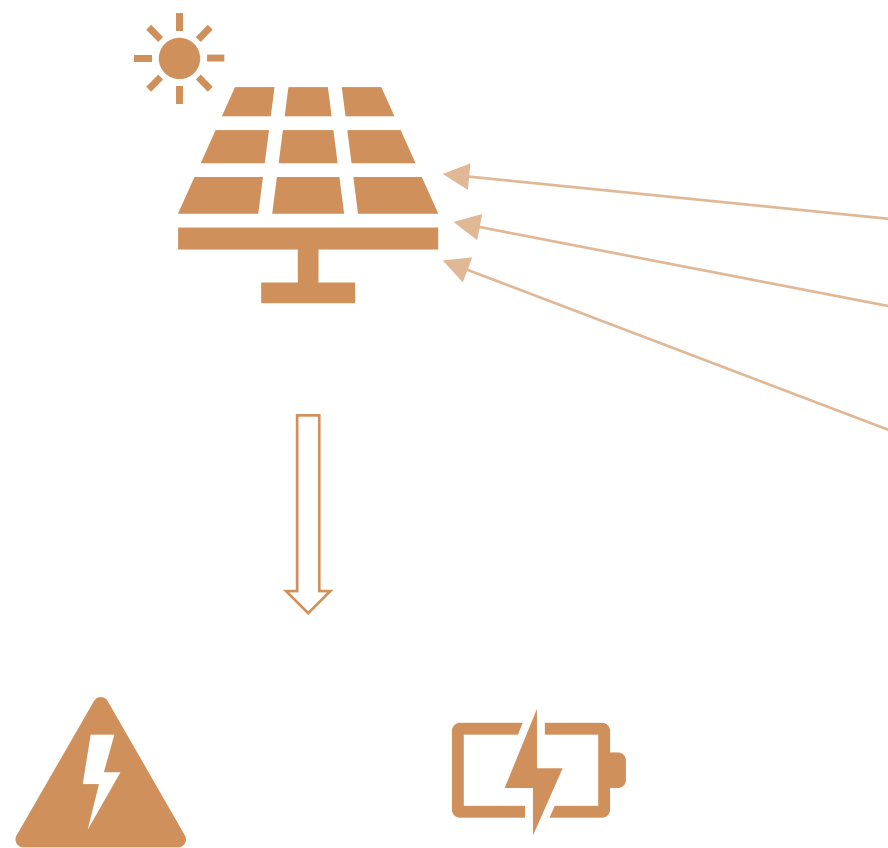


Section 2

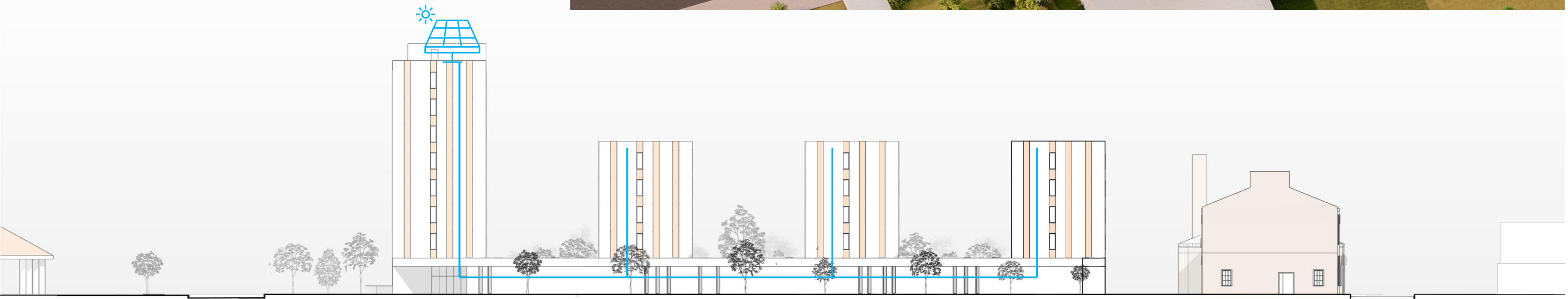
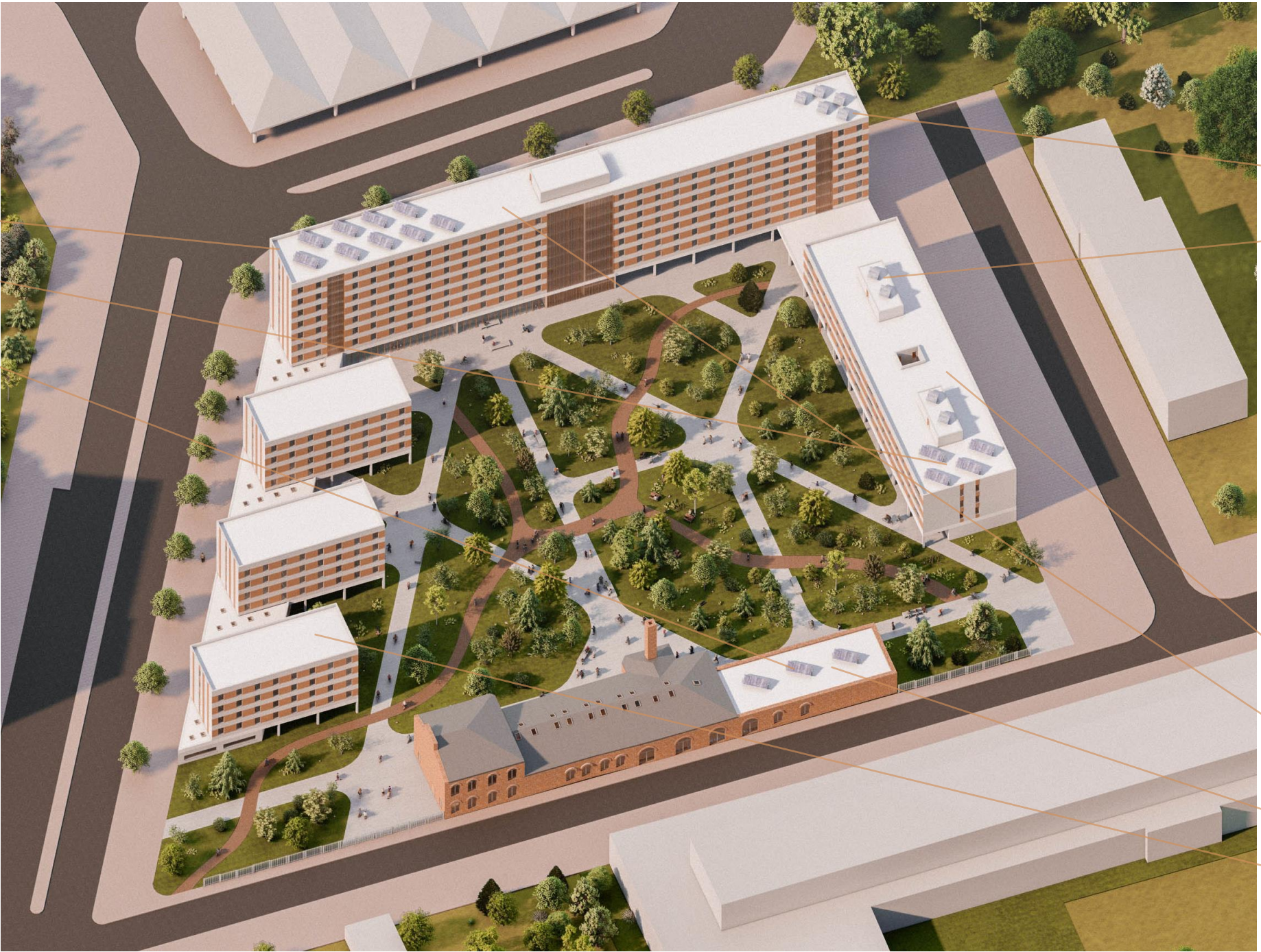


- 
- 
- 
- 
- 
- 
- 
- 

RENEWABLE ENERGY



HOT WATER



# GLOBAL CARBON EMISSIONS

Commercial usage is forbidden. For Spain: Trial for VERDE 2020 (14 days), TRIAL, Pablo Nicolas Campanario Luque

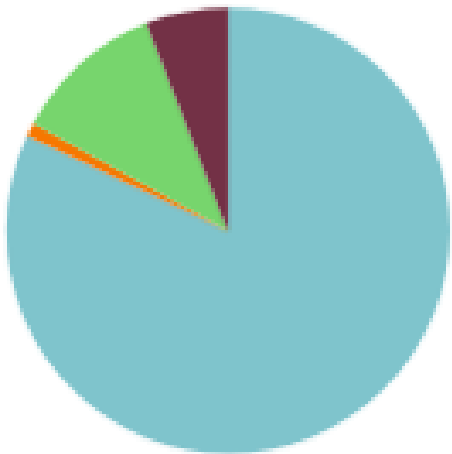


5 271 Tons CO<sub>2</sub>e

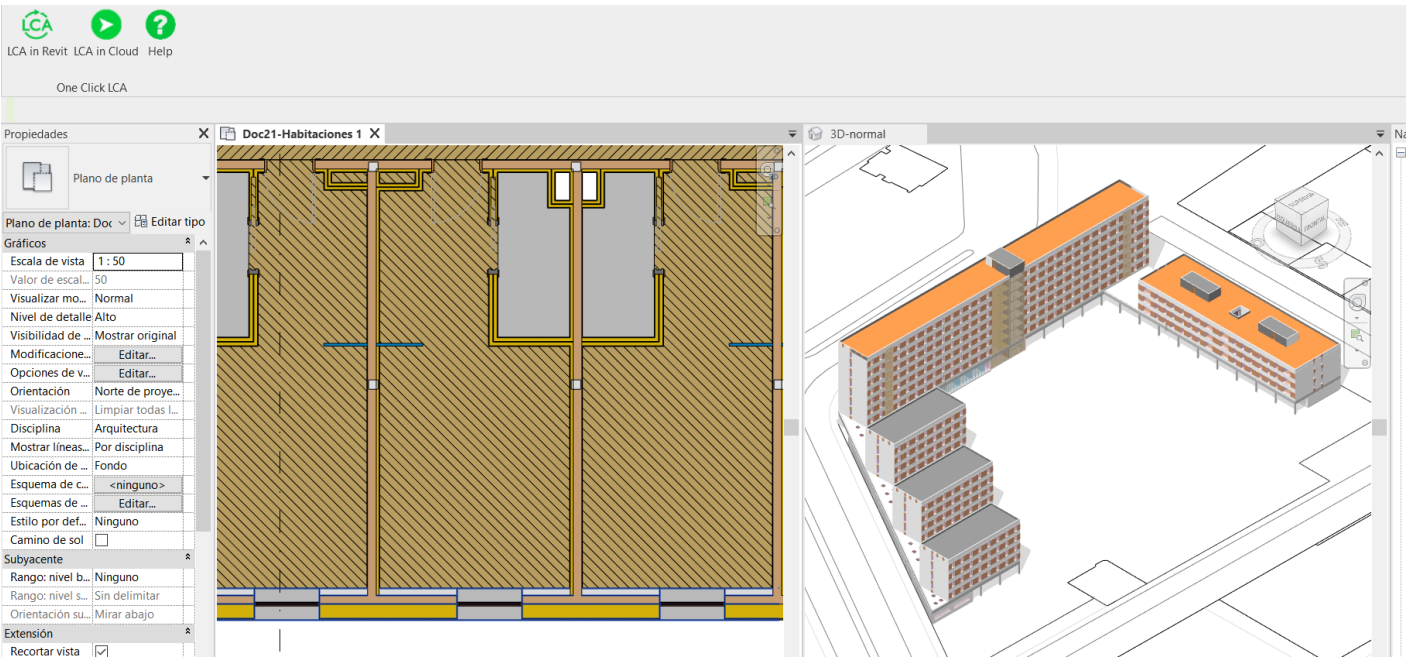
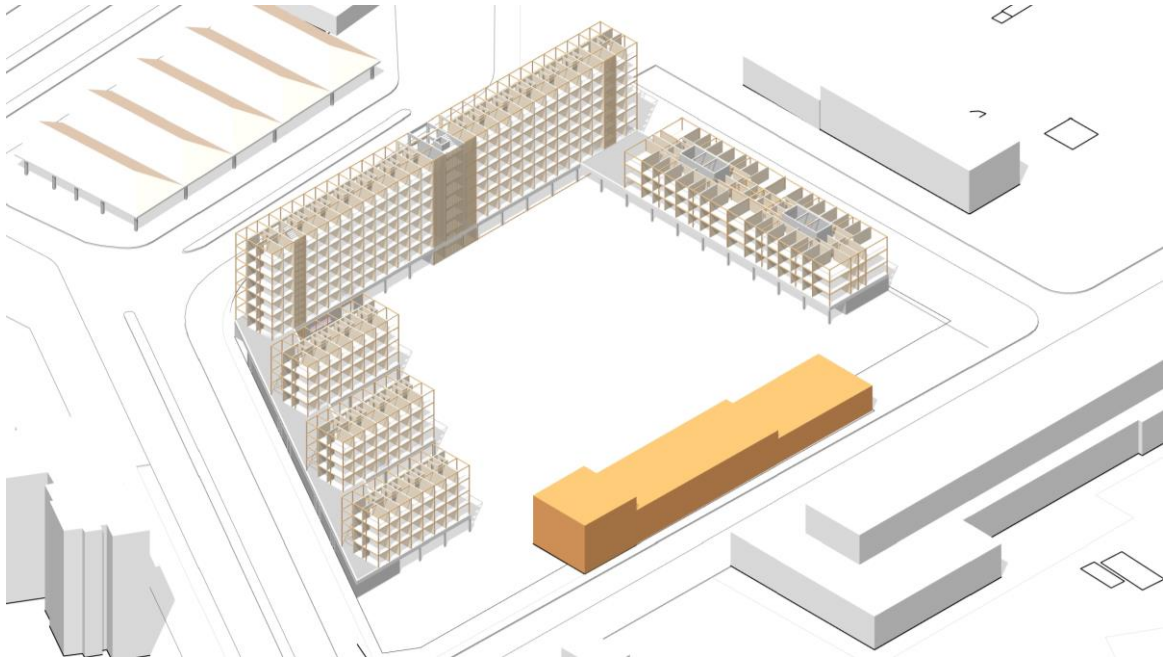
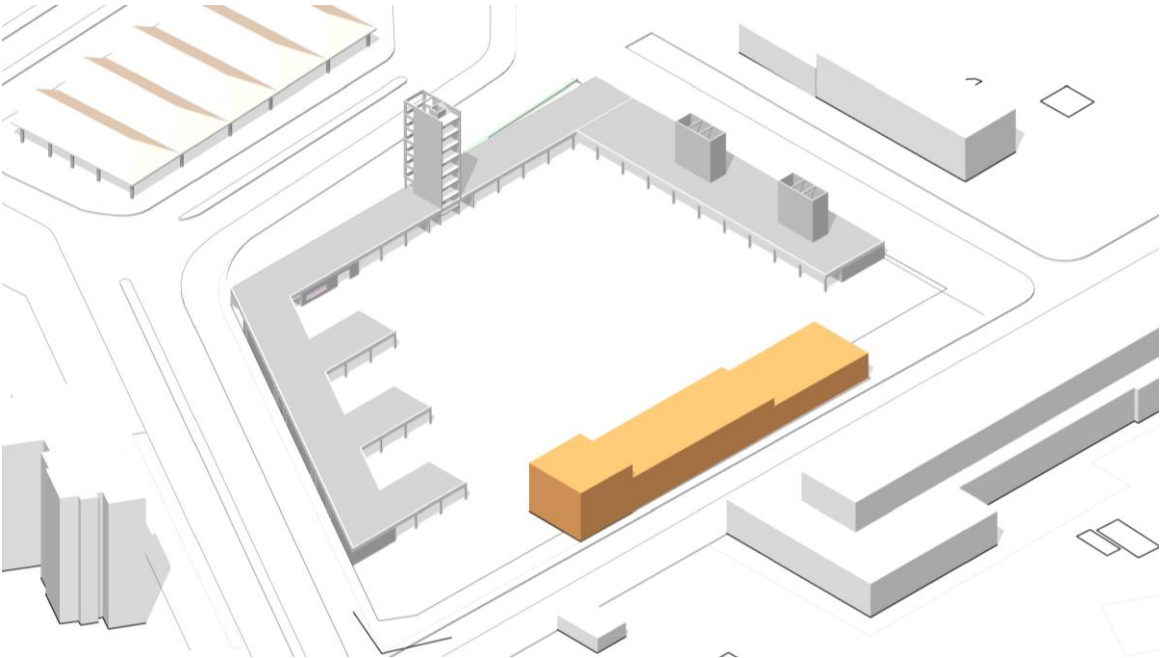
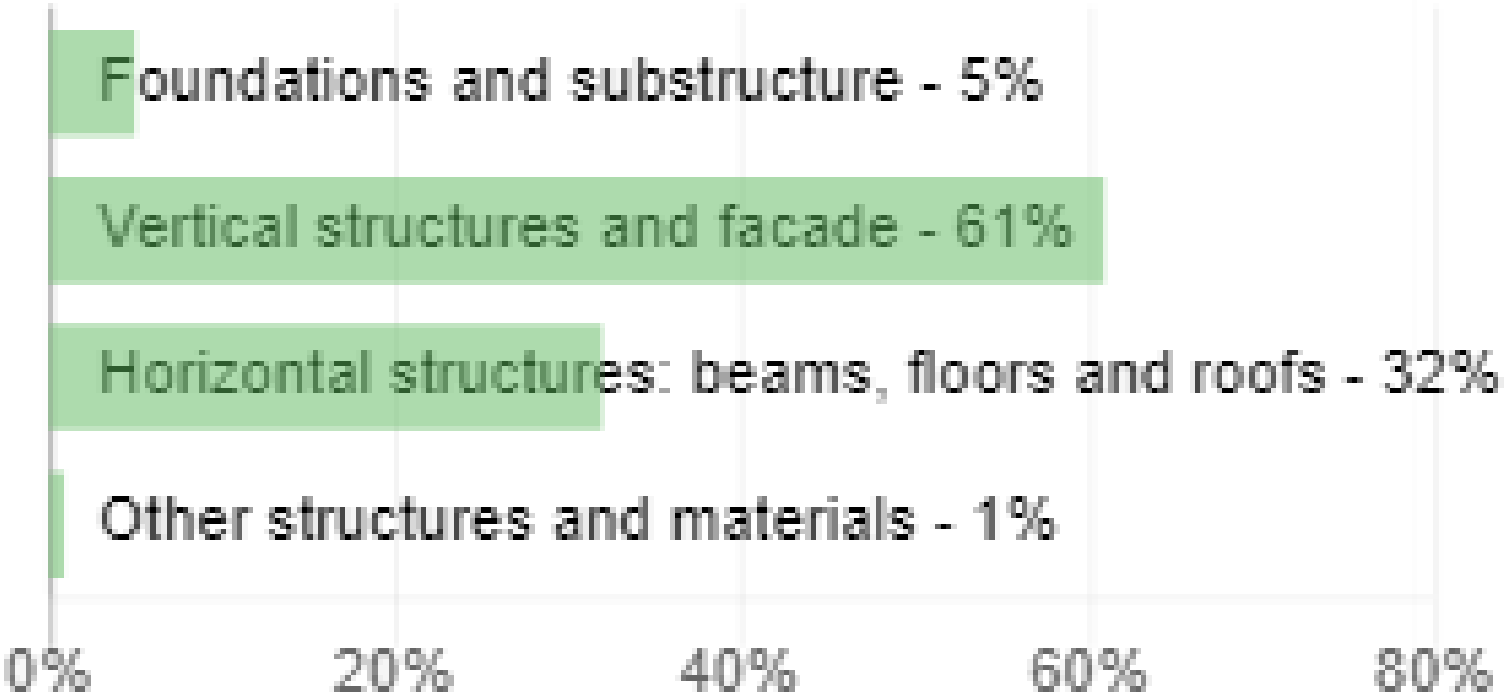
6.09 kg CO<sub>2</sub>e / m<sup>2</sup> / year

263 529 € Social cost of carbon

Cradle to grave (A1-A4, B4-B5, C1-C4)	kg CO <sub>2</sub> e/m <sup>2</sup>
( <b>&lt; 350</b> ) <b>A</b>	<div>One Click LCA</div> <div>360</div>
( <b>350-450</b> ) <b>B</b>	
( <b>450-550</b> ) <b>C</b>	
( <b>550-650</b> ) <b>D</b>	
( <b>650-750</b> ) <b>E</b>	
( <b>750-850</b> ) <b>F</b>	
( <b>&gt; 850</b> ) <b>G</b>	



- A1-A3 Materials- 82 %
- A4 Transportation- 1 %
- B4-B5 Replacement- 11 %
- C1-C4 End of life- 6 %





**THANK YOU**