

# ARCHITECTURE STUDENT CONTEST

18<sup>th</sup> INTERNATIONAL EDITION, LISBON 2023

## TEAM nr 32



Bram Bemelmans  
Student, University of Hasselt  
Belgium

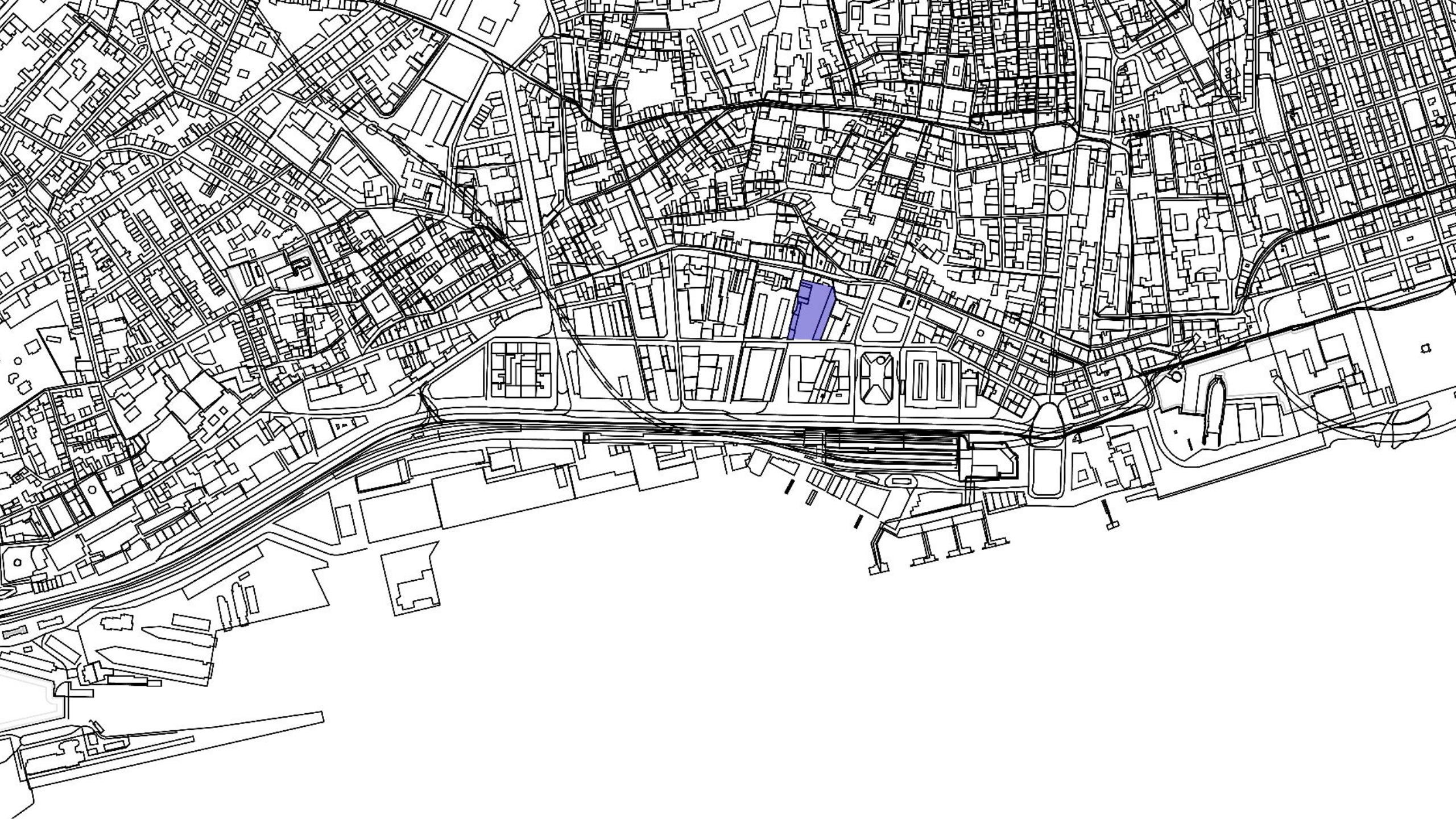


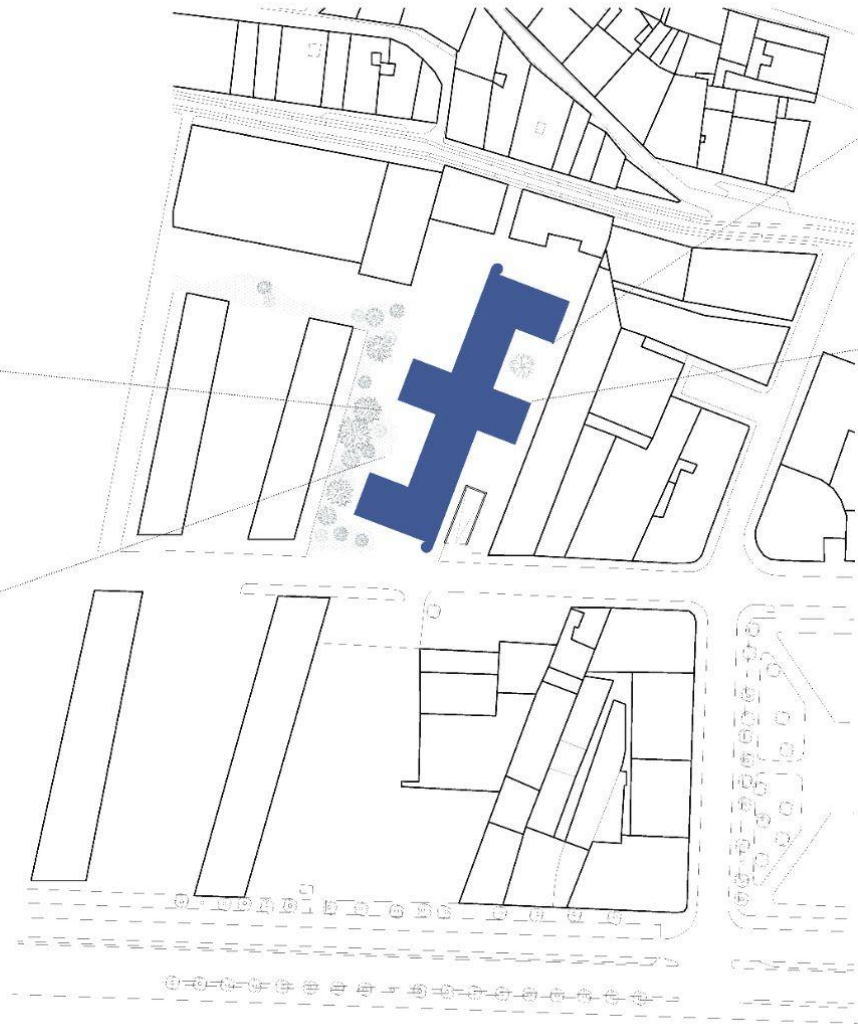
Caitlin Valkenborgh  
Student, University of Hasselt  
Belgium



Thorsten Augustus  
Student, University of Hasselt  
Belgium





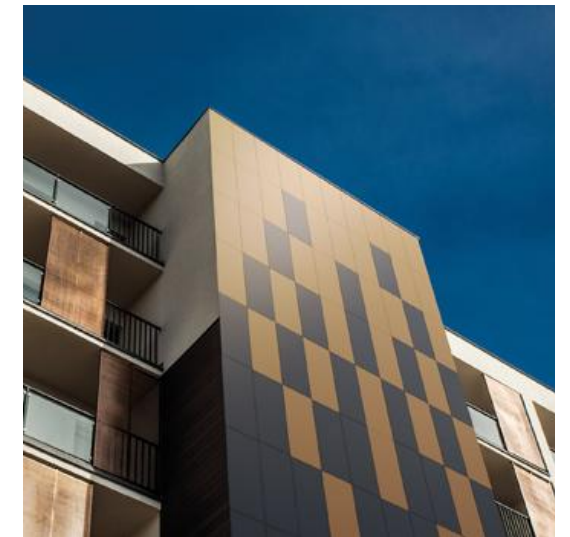
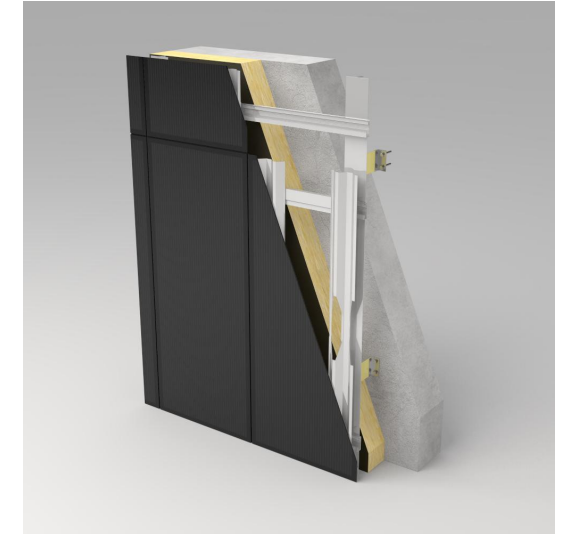
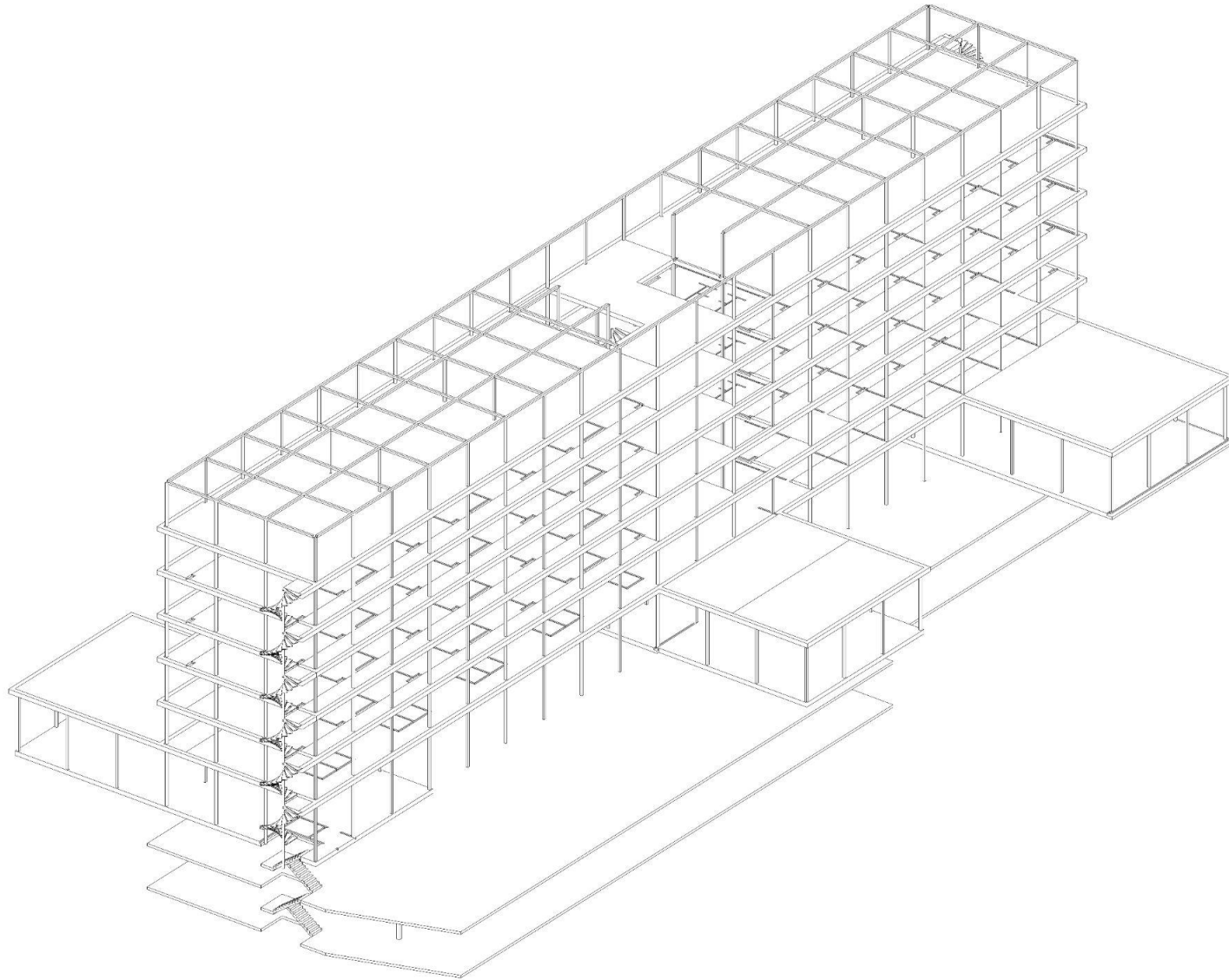


Situation plan

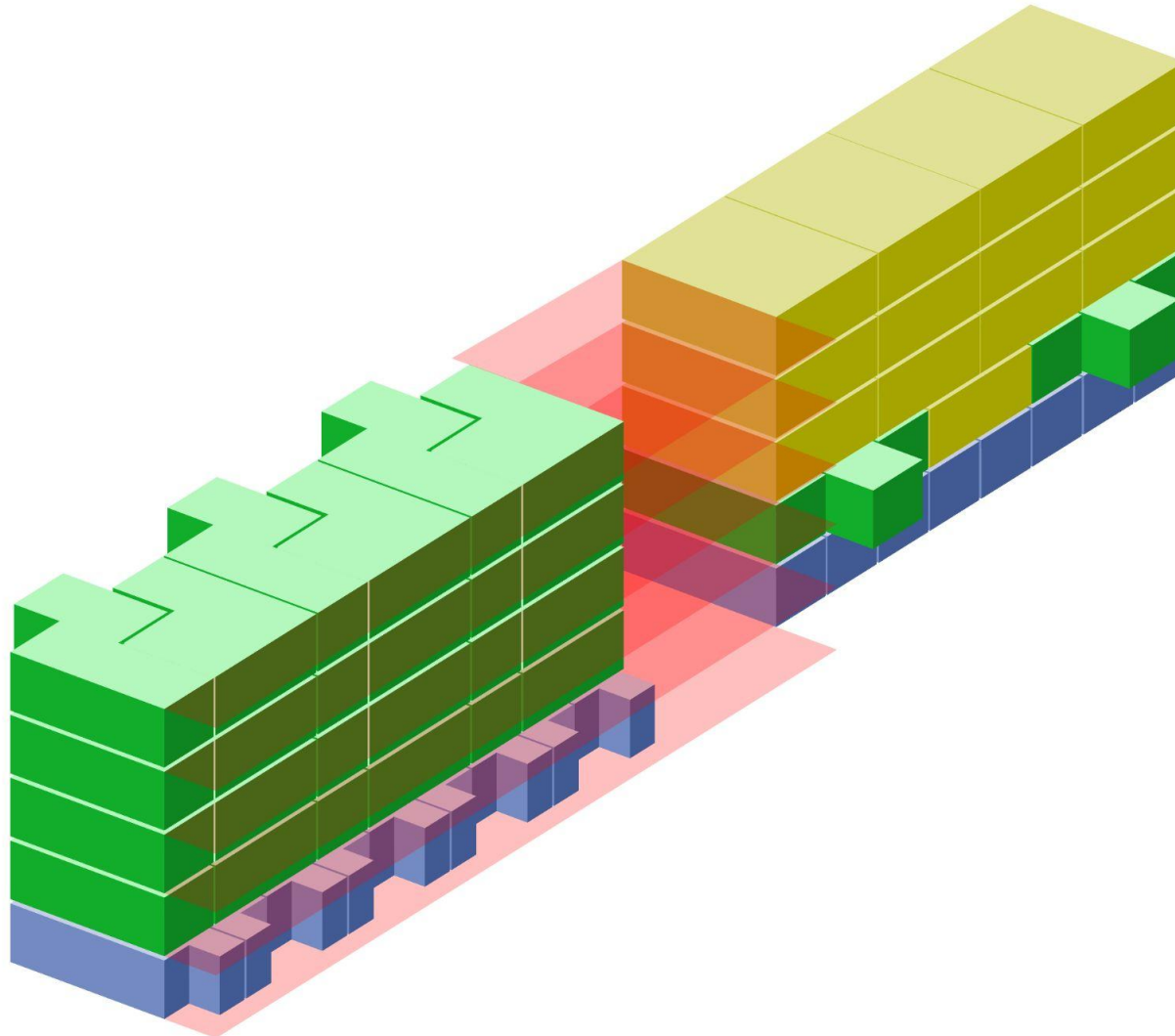




**Efficiency**, adaptivity, humanity



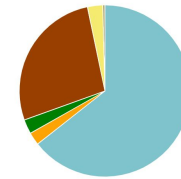
**Saint Gobain** Façade solutions



Van wieg tot graf (A1-A4, B4-B5, C1-C4)	kg CO <sub>2</sub> e/m <sup>2</sup>
( < 230 ) <b>A</b>	<b>319</b>
( 230-340 ) <b>B</b>	
( 340-450 ) <b>C</b>	
( 450-560 ) <b>D</b>	
( 560-670 ) <b>E</b>	
( 670-780 ) <b>F</b>	
( > 780 ) <b>G</b>	

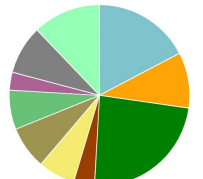
Klimaatverandering kg CO<sub>2</sub>e - Levenscyclusstadia

- A1-A3 Materialen - 64.4%
- A5 Constructie - 2.7%
- C2 Afvaltransport - 2.9%
- C4 Afvalverwijdering - 0.0%
- A4 Transport - 2.4%
- B4-B5 Vervanging - 27.2%
- C3 Afvalverwerking - 0.4%



massa kg - Classificatie

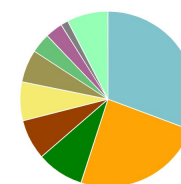
- 1.1 Foundations (substructure) - 17.3%
- 1.2.1 Frame (beams, columns and slabs) - 9.9%
- 1.2.2 Upper floors - 23.7%
- 1.2.4 Balconies - 3.7%
- 1.3.1 Ground floor slab - 6.6%
- 1.3.2 Internal walls, partitions and doors - 7.6%
- 1.3.3 Stairs and ramps - 7.0%
- 1.4.3 External paints, coatings and renders - 3.2%
- 2.1.5 Floor coverings and finishes - 8.7%
- Niet-geclassificeerde/andere - 12.2%



Klimaatverandering kg CO<sub>2</sub>e - Resource types

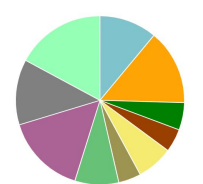
Dit is een gedetailleerd overzicht. Klik op de grafiek om details te bekijken

- HVAC-componenten en -systemen - 30.7%
- Ready-mix voor buitenmuren en vloeren - 24.3%
- Constructiestaal en stalen profielen - 8.7%
- Wand- en vloer tegels - 7.4%
- Wapening (betonstaal) voor beton - 7.2%
- Houten en houten deuren - 6.0%
- Floatglas - 3.6%
- Mortel (metselwerk / metselwerk) - 3.2%
- Gewone gipsplaat - 1.4%
- Andere soorten bronnen - 7.6%

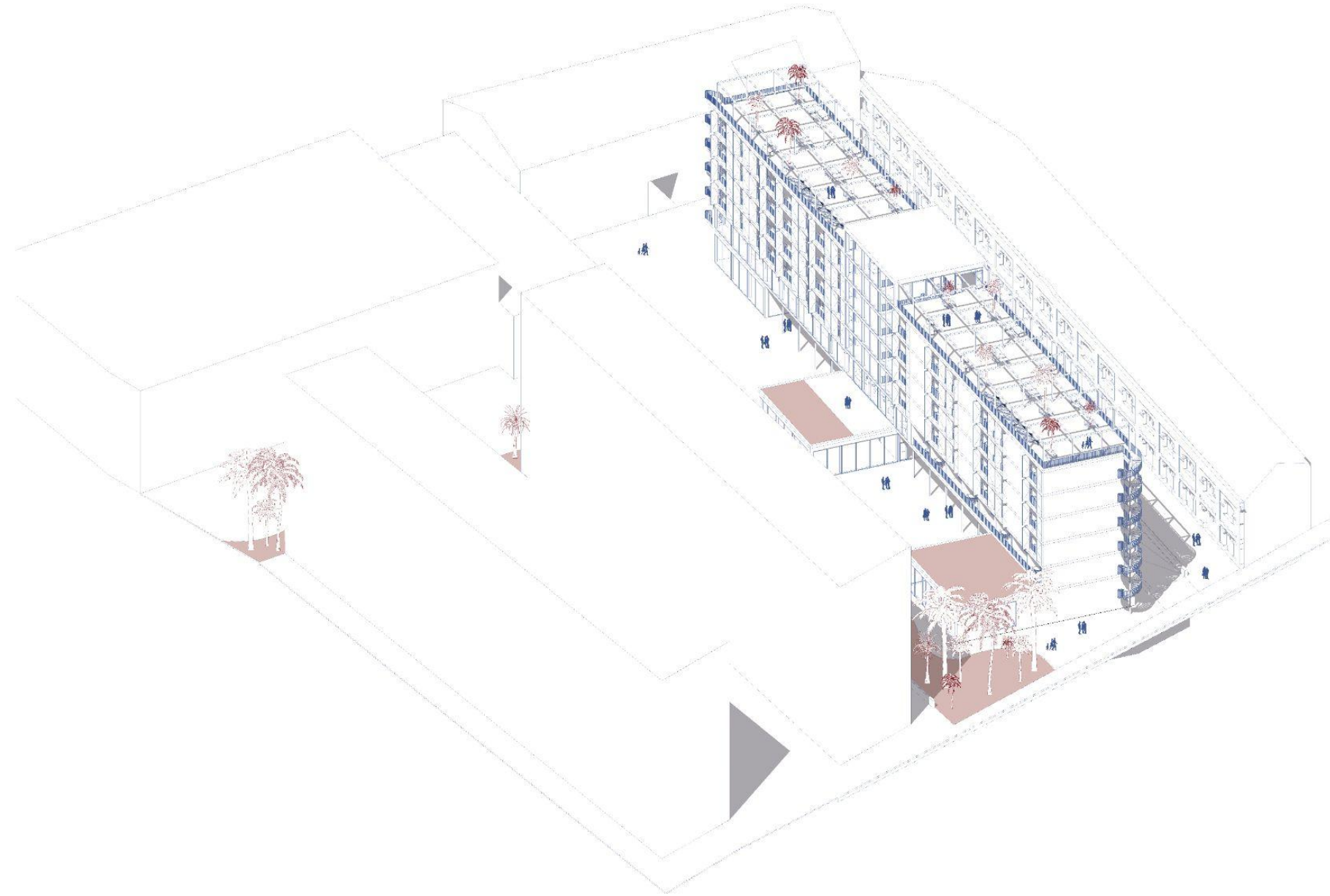


Klimaatverandering kg CO<sub>2</sub>e - Classificatie

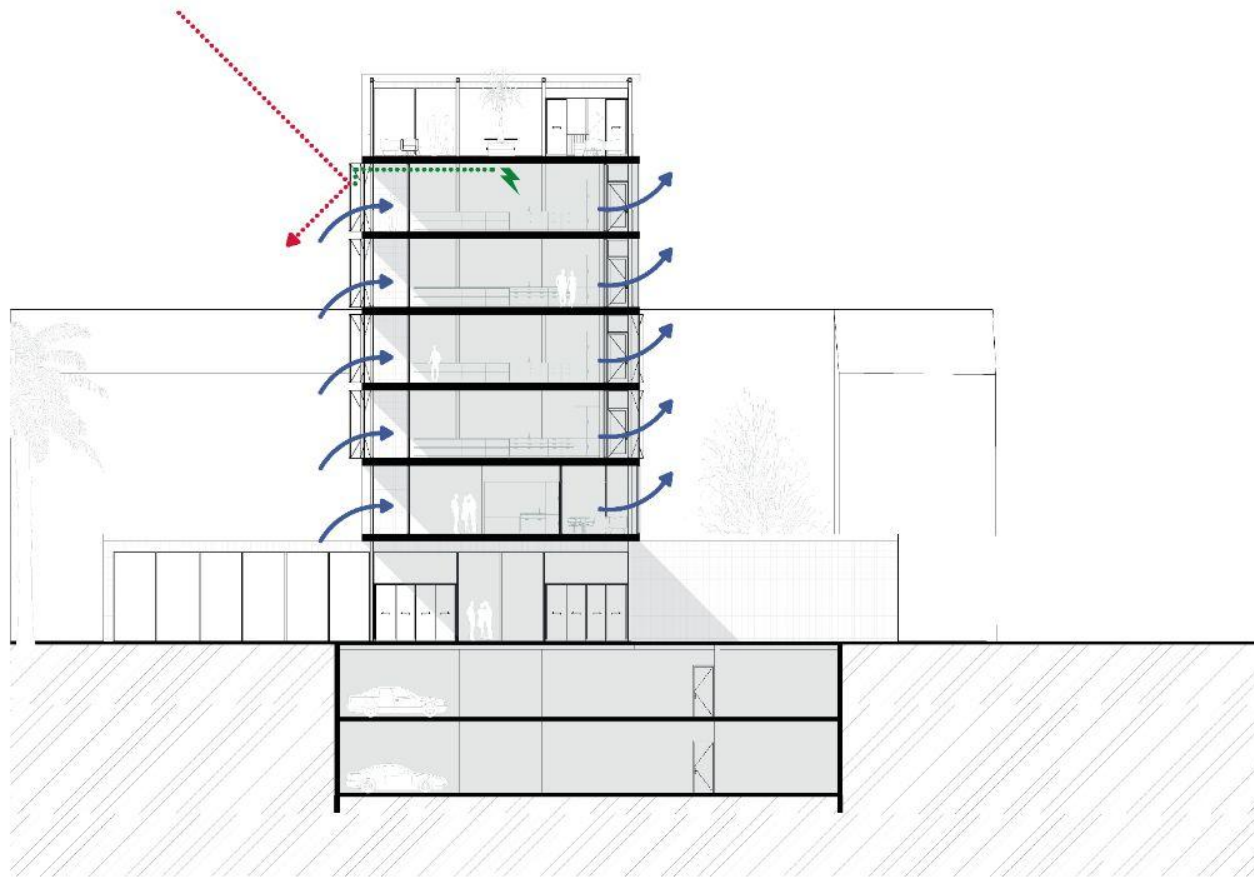
- 1.1 Foundations (substructure) - 11.0%
- 1.2.2 Upper floors - 14.4%
- 1.2.4 Balconies - 5.2%
- 1.3.1 Ground floor slab - 4.4%
- 1.3.2 Internal walls, partitions and doors - 7.0%
- 1.4.2 Façade openings - 4.3%
- 2.1.5 Floor coverings and finishes - 8.4%
- 2.3.1 Heating plant and distribution - 15.5%
- 2.3.3 Electricity generation and distribution - 12.6%
- Niet-geclassificeerde/andere - 17.1%




Efficiency, adaptivity, **humanity**



Efficiency, adaptivity, **humanity**

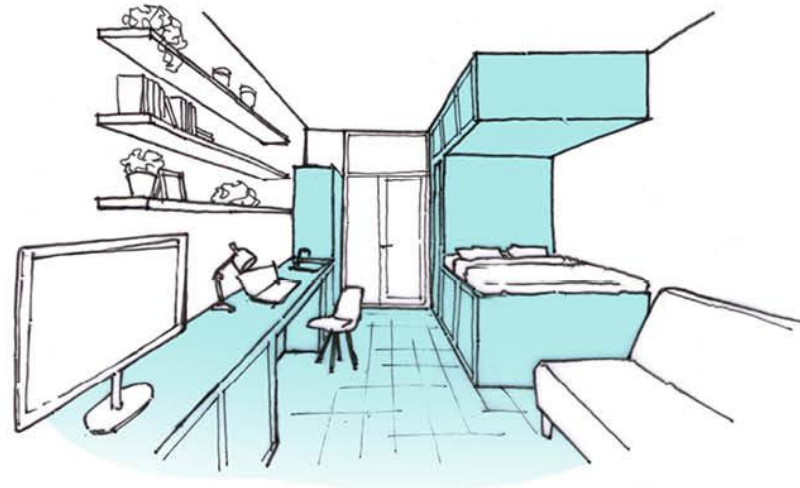
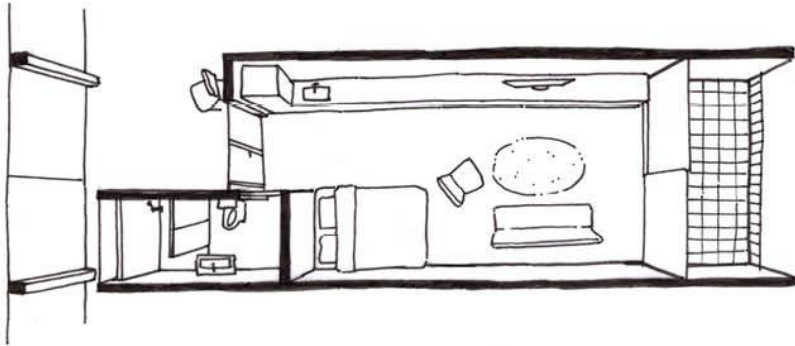


0 10 25  
Section 

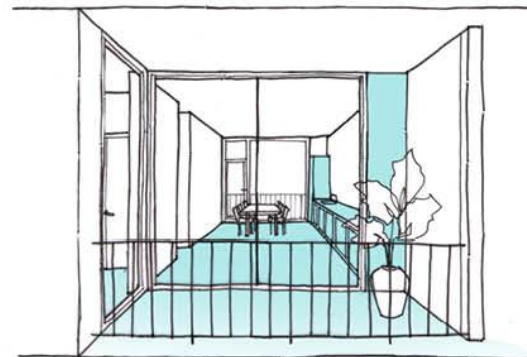
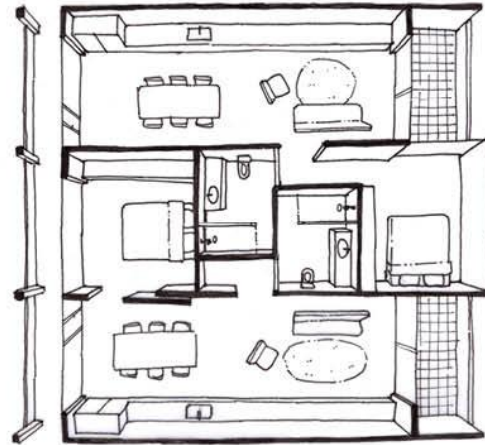
Efficiency, adaptivity, **humanity**

# Apartments

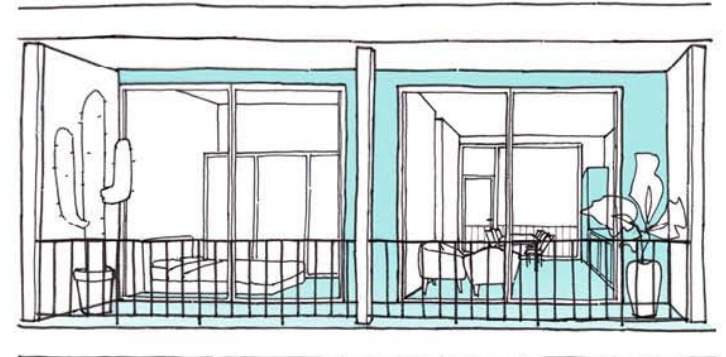
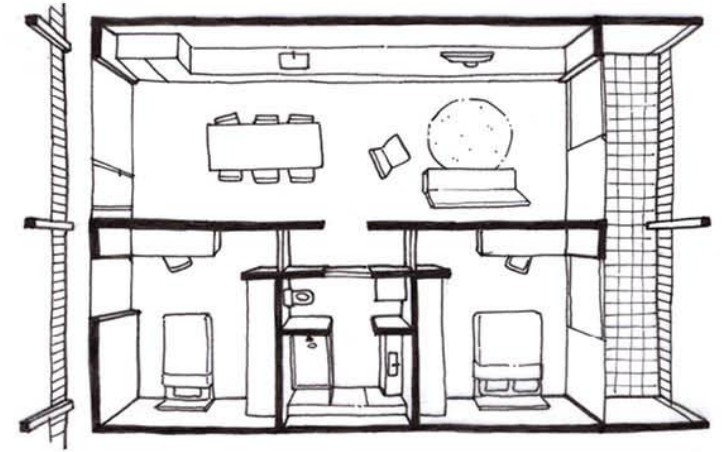
Collective housing



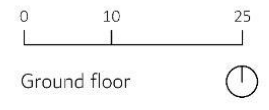
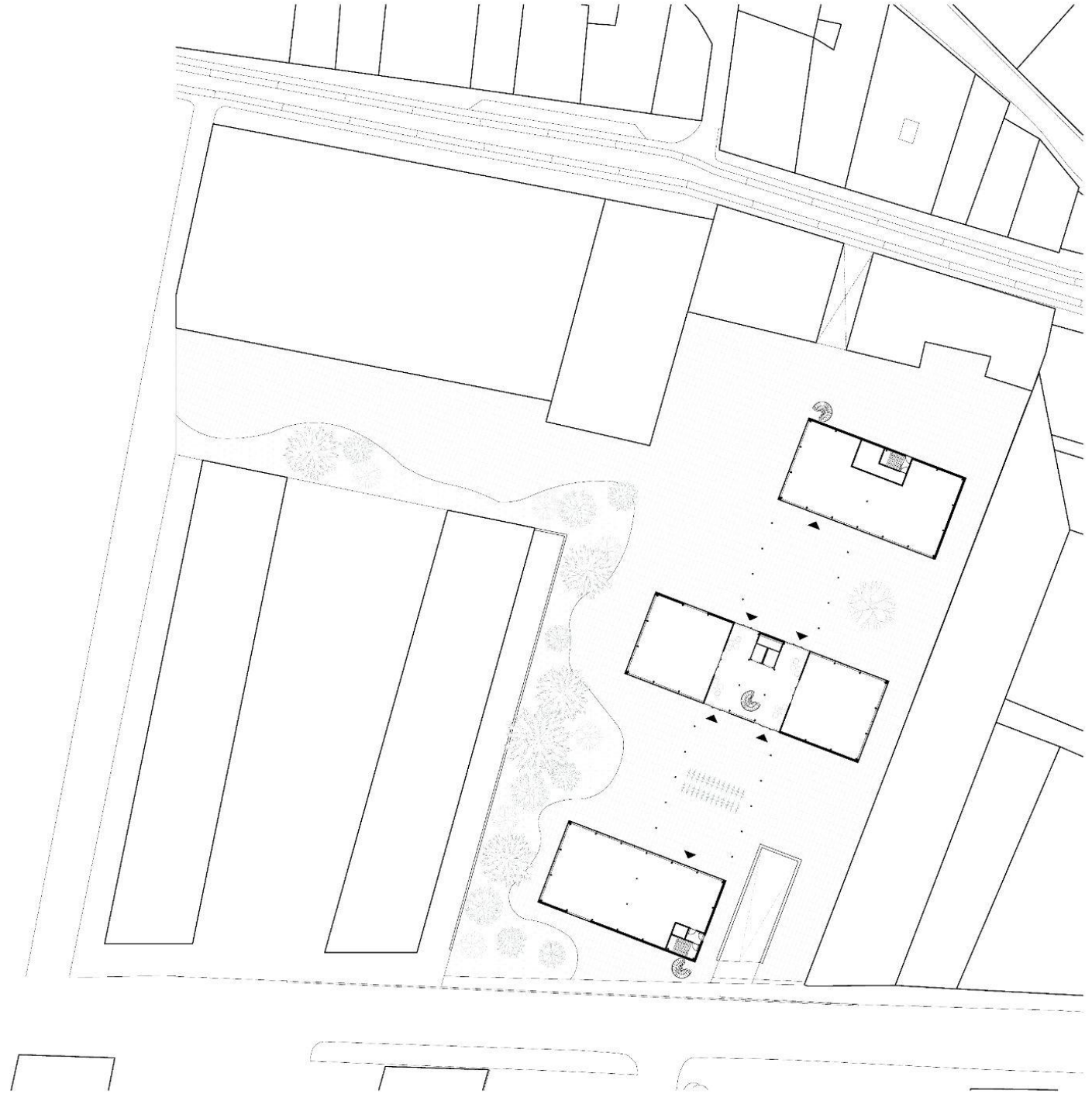
1 Bedroom flat



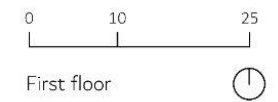
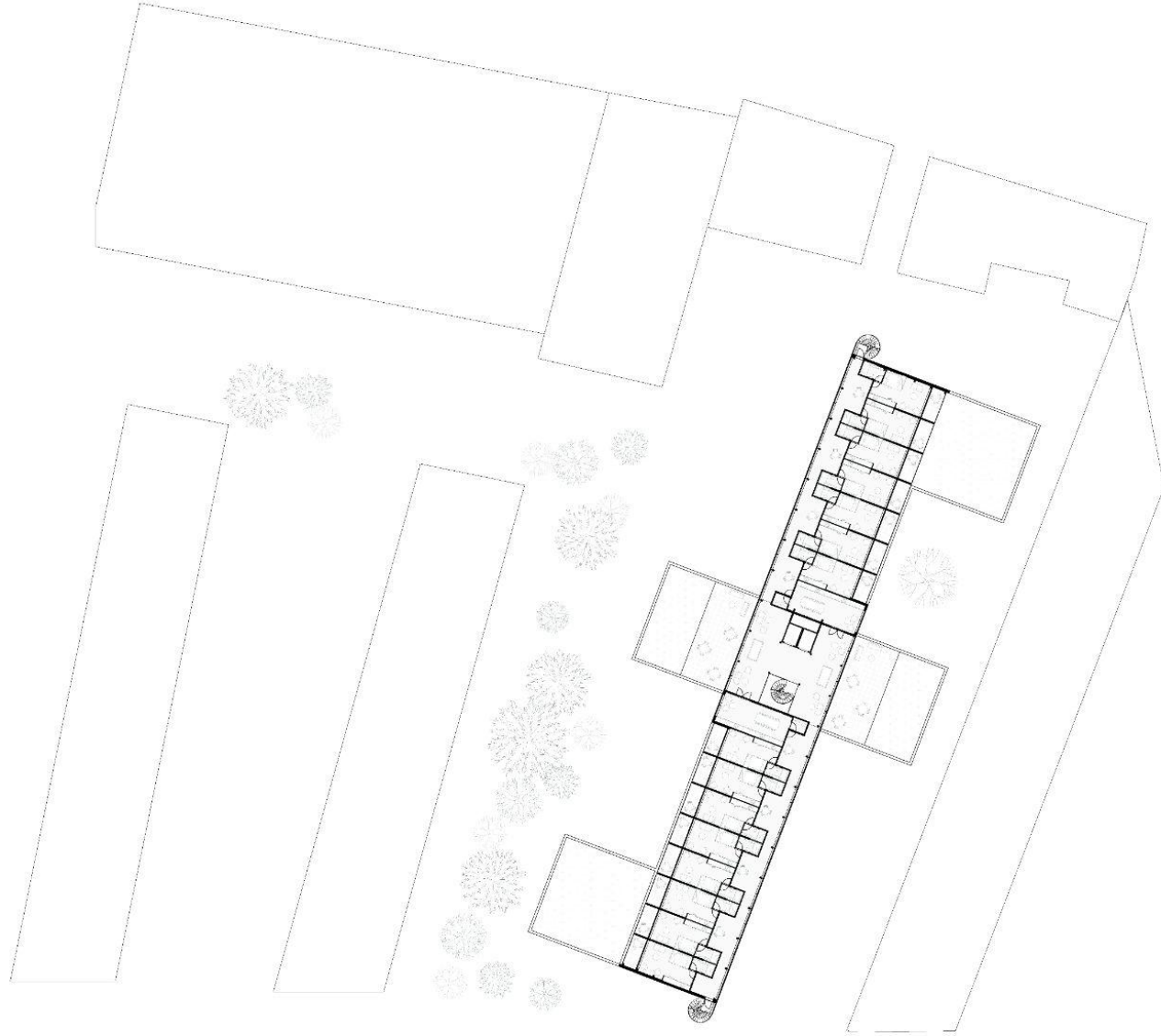
2 Bedroom flat



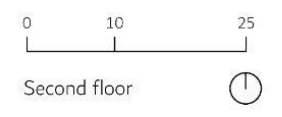
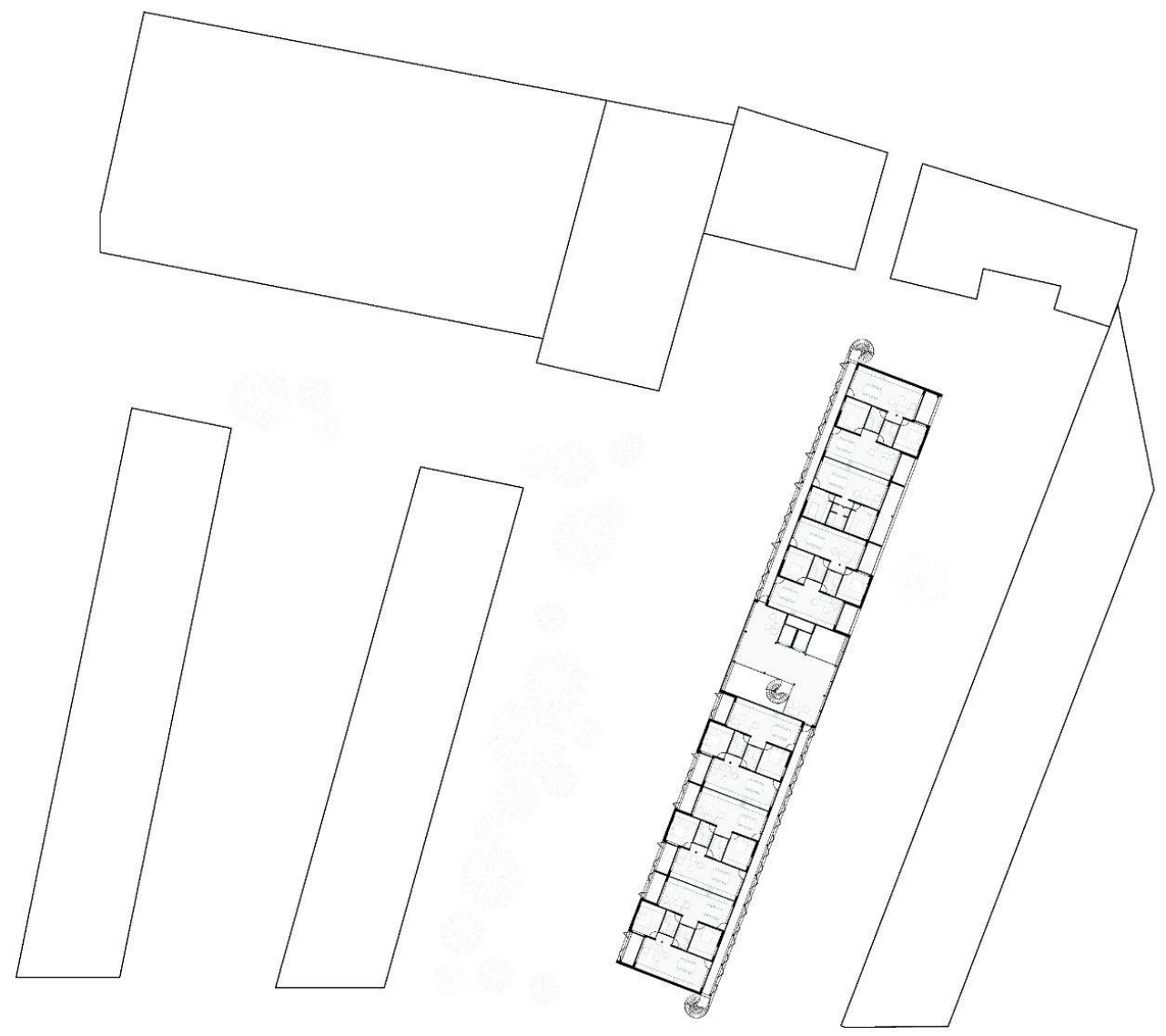
Ground floor



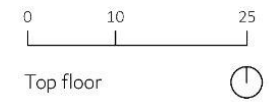
# First floor



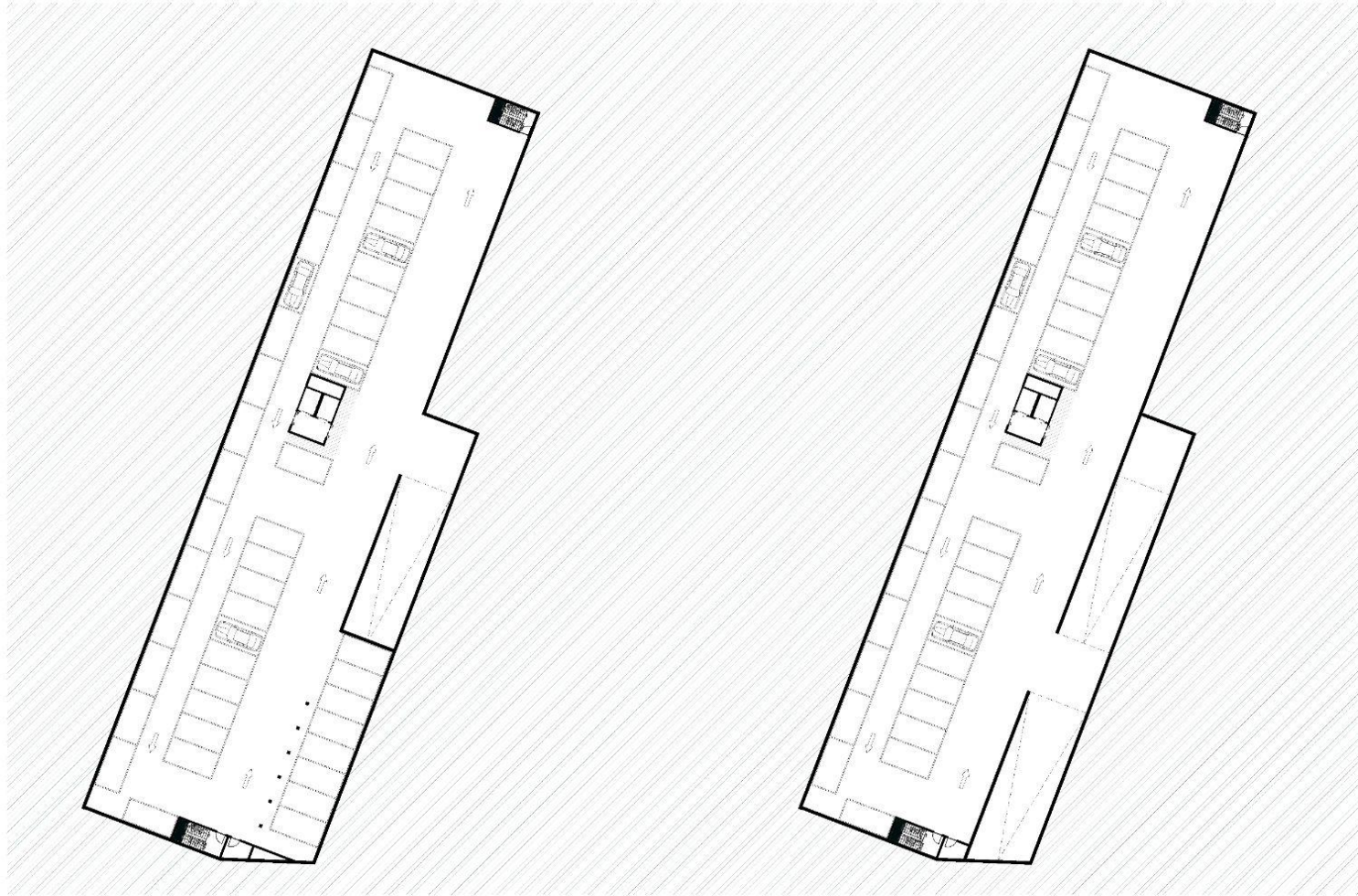
# Second floor



# Top floor



# Parking floors

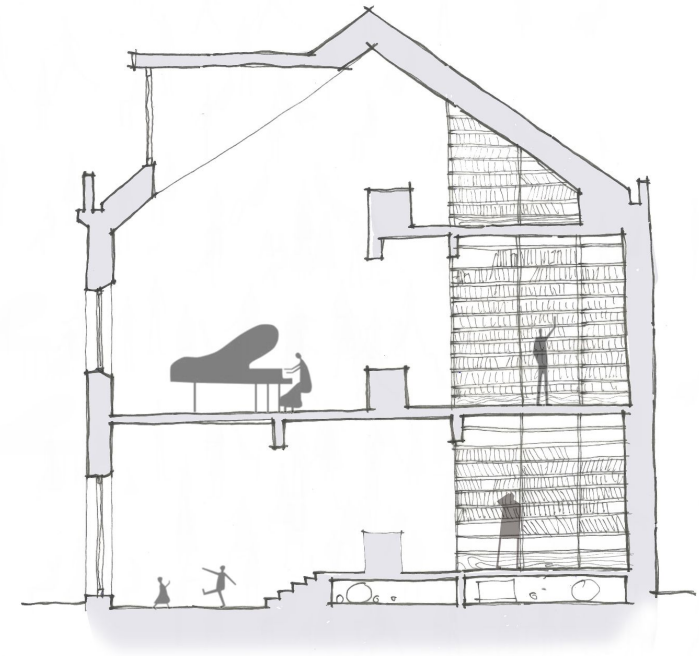
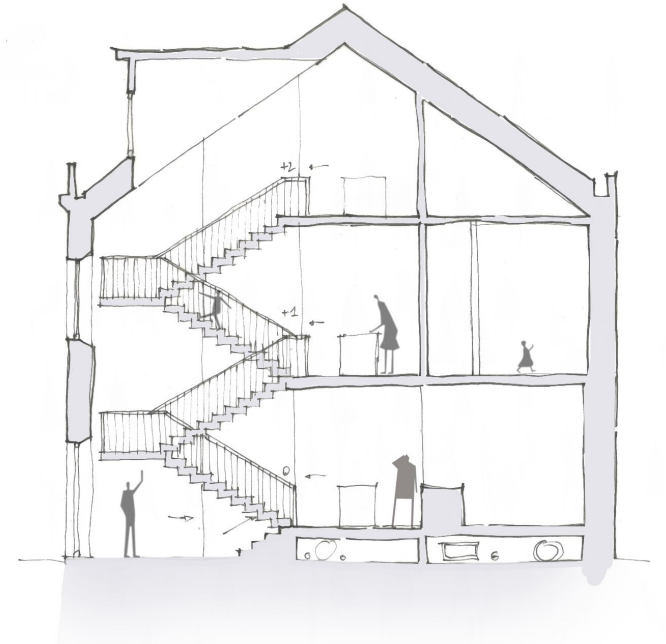
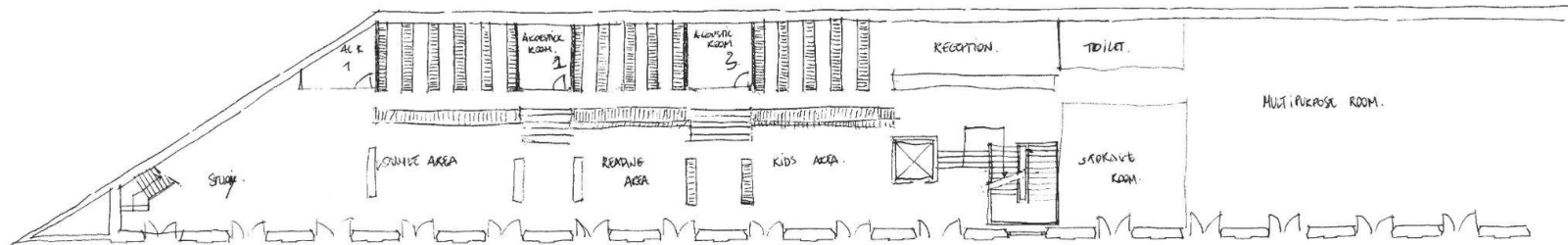
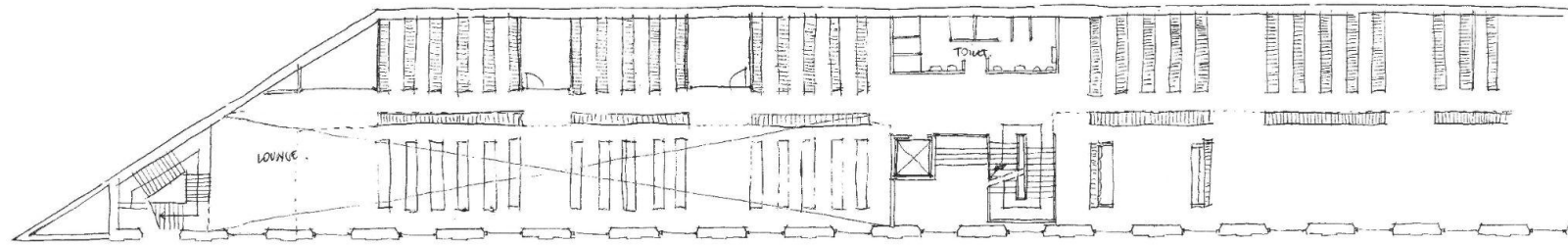
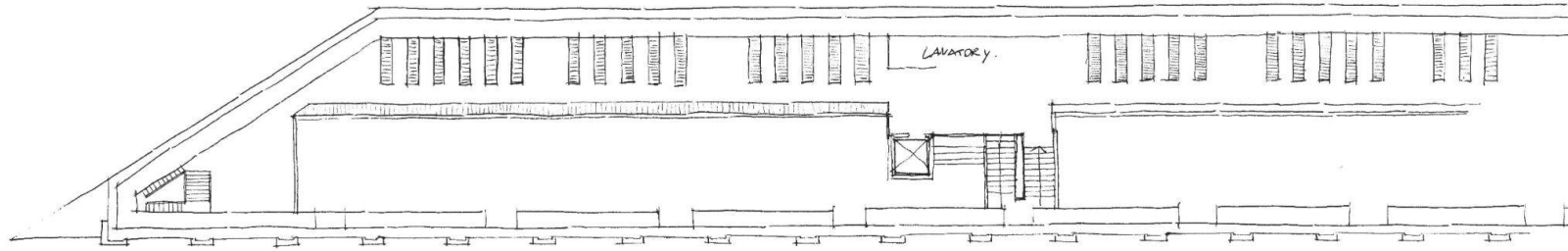


0 10 25

Parking



# Audiovisual library





# ARCHITECTURE STUDENT CONTEST

18<sup>th</sup> INTERNATIONAL EDITION, LISBON 2023