



TEACHER'S DAYS
RECOMMENDATION BOOK

ARCHITECTURE STUDENT CONTEST 2023

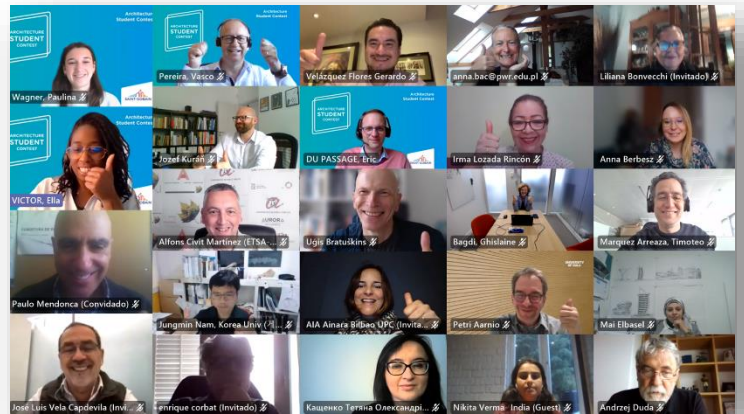
Lisbon, Portugal



INTRODUCTION

As part of the Architecture Student Contest 2023, Saint-Gobain organized on May 24th and May 25th 2022, the Teacher's Days event in a digital format.

During this two-day event, professors discovered the city of the contest through a presentation from the City Hall of Lisbon. They also got a better understanding of the Contest Task with drone views, 360 immersive videos and live description. It was also a good opportunity for teachers to take part of the discussions and to contribute to the creation of the Contest Task.



During this Teacher's Days, 153 professors from 26 countries and 82 universities had actively participated. Through this document, they share their experience and advices.

ACNOWLEDGMENTS

Saint-Gobain would like to thank all the participating professors and the city of Lisbon during the development of the contest task for the Architecture Student Contest 2023.

SPONSORSHIPS





MIGUEL AMADO
Instituto Superior Tecnico
PORTUGAL

Lisbon is a great city with a big waterfront and a climate on changing situation that brings new situations to the transforming of places and buildings.

The Contest Task site is a very update subjects with challenges to future architects who will work on existing cities and transformation process.

The relevance of the site and the proximity to heritage site and new interventions requires an important reflection on the use of sustainable and renewal materials with less natural resources and low energy incorporated.

A phenomena of gentrification are occurring in the present on the area of the intervention site. The relevance of the area who have in the past a reclamation of lands to the river requires an intervention with respect for the historical of the site and the technological process that changed the area and the uses. The cultural of Lisbon are related with the historical of the city who the conservation of memories need to take place.

The sustainability on the competition challenge gone be present in all the approaches. First with the mix uses and activities on the area and site, who allows more social relation and connections take place. The construction of a site that can be flooded on the next 50 years requires a deeper research by the students on solutions that can be apply to make more long the cycle live of the intervention. Also, the solar orientation and prevailing winds exposition go create opportunity to explore bioclimatic solutions and also can allow to use different materials adapted to water, humidity and moisture.

The key challenges of the Contest Task for the participating students is to make an intervention more flexible in terms of uses, dimensions and orientated to a more social relations opportunity between users and residents. Preservation of the history of the site and intervention that allows to sign the time and moment of the realization.

CHISEL CRUZ
UNAM
MEXICO

Interesting to know the climate that this beautiful city of Lisbon has; the spring and summer months are generally sunny, with maximum temperatures around 28 °C during July and August, and minimum temperatures around 16 °C. On average, there are 2,800 hours of sunshine per year and 100 days with rain.



The natural harbor created by the Tagus River estuary made the Contest Task a suitable point to create a settlement and makes the city of Lisbon interesting for contemporary architecture.

The Lisbon Architecture Triennale and Open House - a festival that organizes free guided tours of emblematic buildings in different cities around the world - are some of the examples that, related to the field of architecture, are responsible for disseminating, debating and reflect on the most relevant issues within the discipline.

The economic crisis that Portugal and other European countries face due to the current international financial and economic crisis, has resulted in an increase in unemployment and poverty. Almost half of the population, including members of the middle class who lost their jobs and/or homes, suffered poverty between 1995 and 2000.

Climate change also affects the economy and the well-being of citizens. New approaches are needed to combat poverty and address environmental challenges.

The key challenges of the Contest Task to participating students is the recycling of the existing building.

NADA ES-SALLAK National School of Architecture of Fez MOROCCO

The Contest Task site and the construction of the site are very interesting.

Lisbon is a very rich and varied city in terms of social, cultural and historical aspects.

The sustainability challenges are interesting.

The key challenges of the Contest Task to participating students will be to propose an innovative architecture, which fits perfectly into the landscape of the site and in total respect of the proposed identity and social context and in response to the urban and development issues reported.



ALFONS CIVIT I MARTINEZ

Universitat Rovira i Virgili – Escola Tècnica Superior d'arquitectura de Reus
SPAIN

The city has a long historic experience, since the Roman era. It is north of the Tagus estuary and survived a horrific earthquake.

The Contest Task site has old facilities close to the port, in a narrow and almost flat space, close to the river / sea. The area is surrounded by old buildings or under construction.

The construction to be preserved is a long, narrow and relatively low bar. In parallel to this, there is a long, narrow space where a new building can be built. It seems that both the buildings and the open spaces will not be able to be seen much from the outside, so the projects can be more introspective.

Lisbon is a capital related to maritime trade, travelling round the world, sailors and cartography. The part of the center has been losing population and quality for many years and currently the municipality has scheduled several activities aimed at revitalizing it, with aid for housing rehabilitation and urban transformation.

The goals are clear and have a strong link to climate change and its consequences. The technical aspects of the program must be able to serve to facilitate a better society.

From my point of view, free space management and inside-out views are the most important issues that participants will encounter. Environmentally, it is important to remember both the proximity to a large body of water that can rise due to climate change and the location of the city in a temperate Mediterranean climate that will gain temperature over the years.

TATIANA INOSOVA

Kyiv National University of Construction and Architecture
UKRAINE

Lisbon is a very beautiful city, as can be seen from the materials provided.

The proposed Contest Task site seems to me very difficult and interesting at the same time. The high density of buildings in the historical part of the city, in which the site selected for design is located, creates additional problems for solving the issue of development.

Participating students must come up with a bold and unexpected idea that will improve the functional and aesthetic component of the existing urban development context.



MUHAMMAD ALFRENO RIZANI
Universitas Muhammadiyah Banjarmasin
INDONESIA

Lisbon is a beautiful city.

The Contest Task site is very-very specific.

The social and cultural aspects of Lisbon are homogenous and tolerant.

The sustainability challenge will be to raise awareness.

The key challenges of the Contest Task to participating students will be that the project has to be functional, thermal and flexible.

AINARA BILBAO
Universitat Politècnica de Catalunya
SPAIN

Lisbon is an interesting location; a very respectful proposal should be a must in such historical city.

Plenty of pre-existences make the Contest Task site very challenging.

Sustainability is no longer optional. We cannot continue ignoring environmental problems and we must act in consequence as architects and as human beings.

IRMA LOZADA RINCON
Universidad Intercontinental
MEXICO

Lisbon and the immediate context are appropriate to develop a project of this magnitude. The participants will have the opportunity to get involved with the culture, history and regulations to create a space according to the place.

The contest site represents a great challenge for the participants. It not only implies the capacity for architectural design, sensitivity is needed to give a holistic response. At the level of architectural heritage, the area where the site to be intervened is inserted has a very homogeneous architecture that is assumed to be characteristic of the place. In order to intervene in the pre-existence and propose the newly created objects, it is suggested to have



more information about the current regulations, so that the participants can issue appropriate proposals and within the framework of what is allowed. Speaking of the construction of the Audiovisual Media Center, it is suggested that more information be added than is expected to be received in order to have a criterion that guides the proposal.

At the urban level, the challenge for the participants is to design to promote meeting points that trigger coexistence and community. In that sense, the place is located in an area where there are many buildings and factories, it would be appropriate to have an idea of the number of people who pass through the area so that you can make a proposal that includes them so that they appropriate the place.

Contest entrants will be required to consider the social, cultural and historical aspects of Lisbon. It depends on this to understand the potential user and provide an accurate solution.

Regarding the sustainability challenges and in relation with the construction of the Audiovisual Media Center, it is suggested to provide more information than what is expected to be received with the purpose of having a base criterion.

The key challenges of the Contest Task to participating students will be to identify the dynamics of the site, understand the behavior and customs of the user, design exterior spaces so that the inhabitant appropriates them and make architecture responsible with the environment.

EUSEBIO ALONSO-GARCIA

Universidad de Valladolid
SPAIN

Lisbon has a fantastic location in the Tagus estuary that has always been a natural protection that has historically marked the seafaring tradition of the capital and the country. Over time, the city has been replacing the traditional industrial developments linked to the river and the sea by spaces of a more urban nature that were opening the city to water; the Praça do Comércio and the district of Marquis of Pombal are an internationally recognized example. We recognize in the current approach of the site of the Contest this challenge to promote urban and civic relations in the river environment and to conquer more vivid and inhabitable spaces for the citizens.

The place where the competition is located is currently in the process of requalifying the city in its relationship with the river Tagus, whose main difficulties are the relationship with the railway lines that occupy the river front and whose presence imposes barriers against a more direct relationship, the management of the reuse of old buildings whose structures constitute valuable references of an architectural past and the definition of the appropriate relationship between new uses, new buildings and old structures. The potential creativity that lies in the emerging

contradictions between these issues are an opportunity that every project proposal must discover.

In the long history of the Isover Saint-Gobain Competition we have been able to face places where sometimes the freedom of management of the buildings was greater, which gave us better flexibility to address sustainability problems from the planning, and, in other cases, approaches where the planning was already previously defined. Although the management of the different blocks A and B is already defined in this contest, we consider an important opportunity, and a challenge that can mark the differences between the different proposals, the fact of seeing how the reflections on the public space that the project will bring to the city, its relations with the existing urban landscape and the memorable presence of its proximity to the river Tagus will be resolved. These are issues that will affect, on the one hand, the typological proposals of two blocks A and B that can be raised and, on the other hand, the design of area C and its relationship with the two blocks and with the different urban spaces of the environment.

Light, marble and water were the materials that Baudelaire identified with Lisbon. White city for someone and blue for others, Lisbon has given rise to numerous urban symphonies in cinema and literature, as a starting point and as a point of arrival, and where, in one way or another, the rich diversity of its spaces of encounter and coexistence, its different neighborhoods, has been appreciated since ancient times by nationals and foreigners.

Lisbon, like other major cities in the world, has been proposing for years a strategy of sustainability of its urban architectural heritage by implementing new social and cultural uses to help its regeneration. The combination of the new Lisbon Video Library program, strongly linked to the new cinematographic ecosystem of the city, and its relationship with the new residential building is its biggest challenge to the sustainability challenges.

The difficulties of the site already pointed out and the imposed restrictions of the planning should be taken as challenges for the creativity of a project whose main opportunity is to continue an internationally recognized history and landscape and to grow from its knowledge and learning, following the example of artists and architects who were inspired by this city before us.

ARCHITECTURE
STUDENT
CONTEST