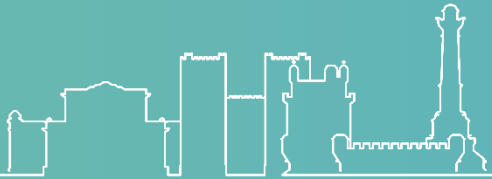
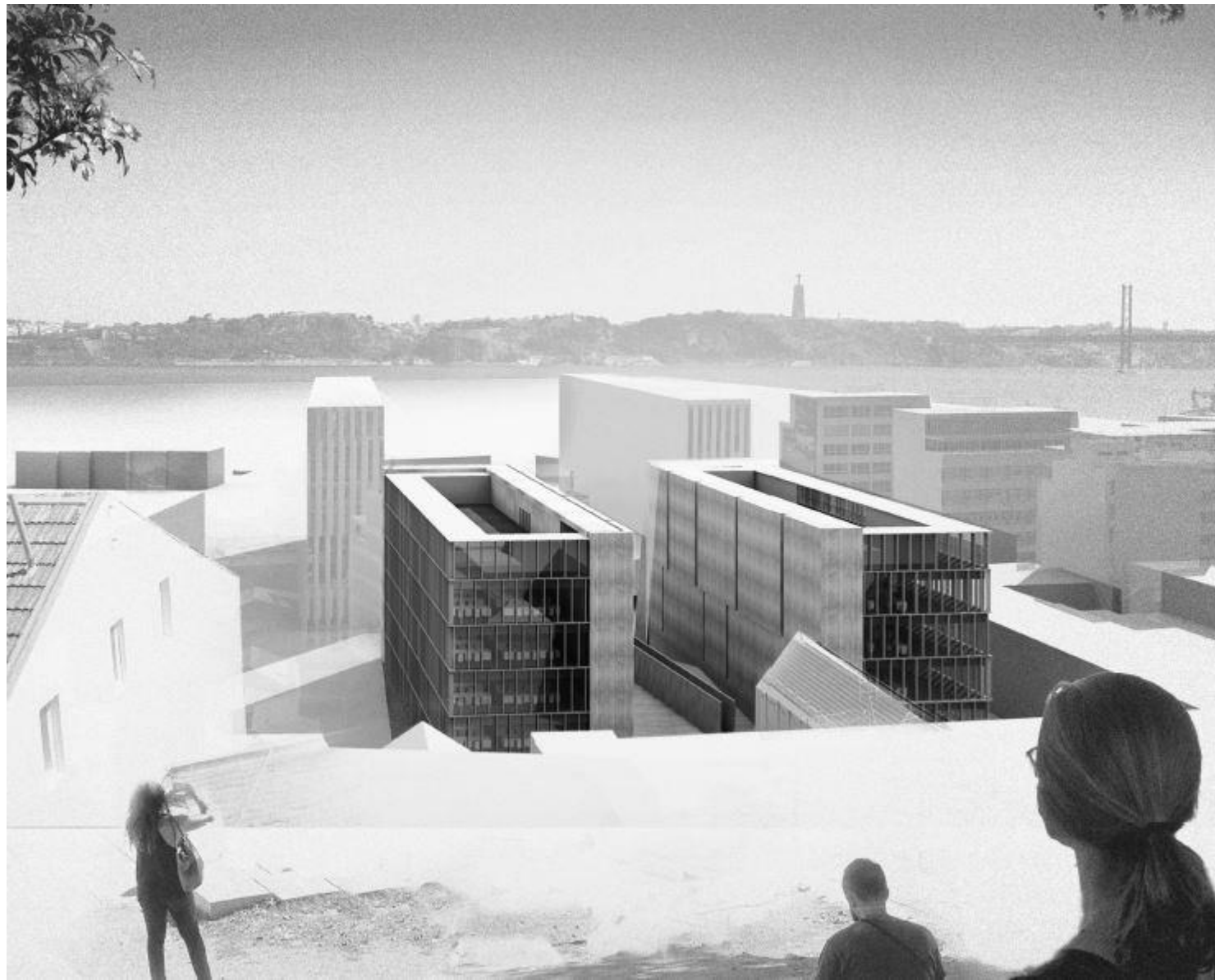


INFORMATION ON ALEJANDRO ARAVENA'S PROJECT (EDP building)



ARCHITECTURE
STUDENT
CONTEST

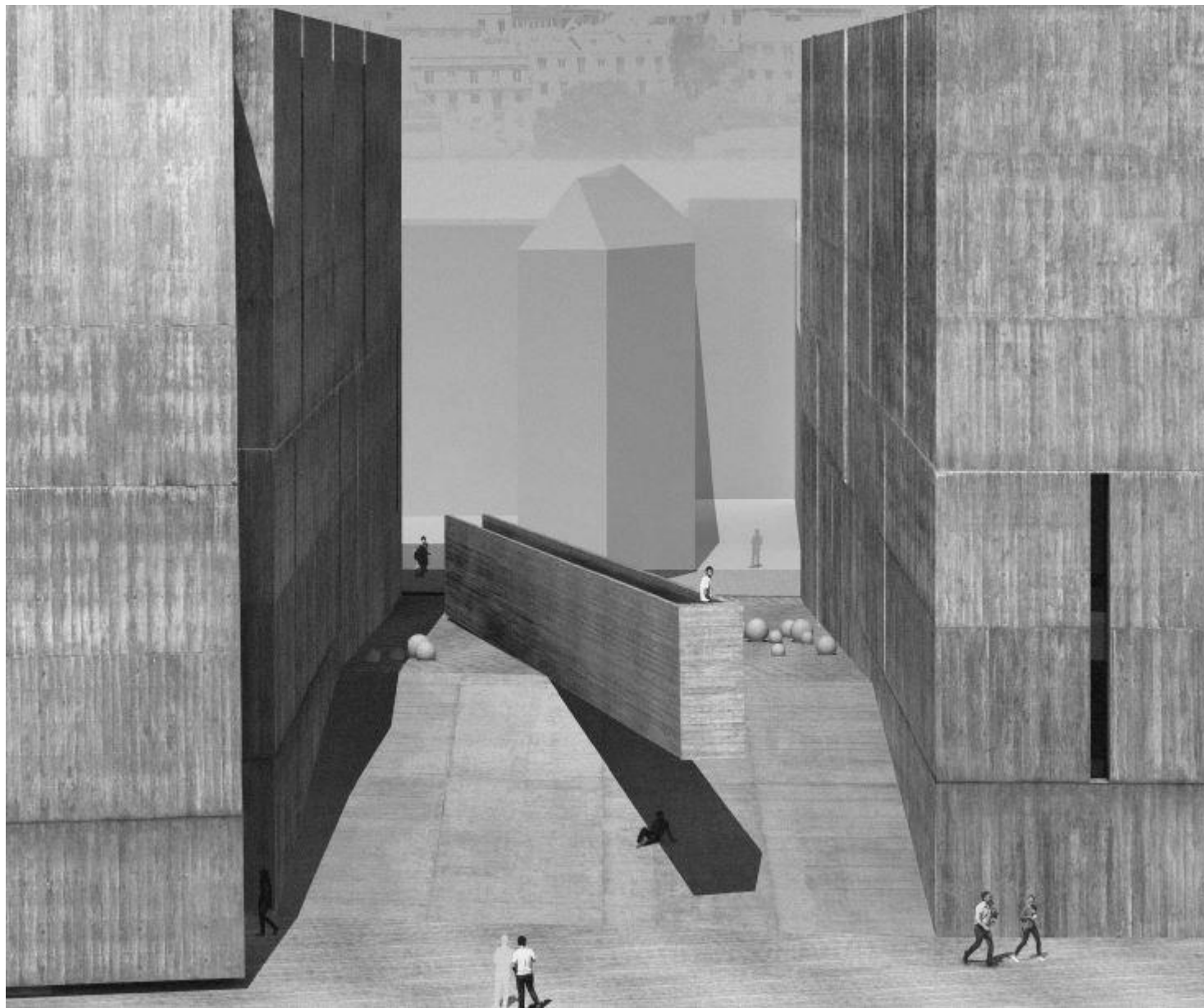
— LISBON 2023 —



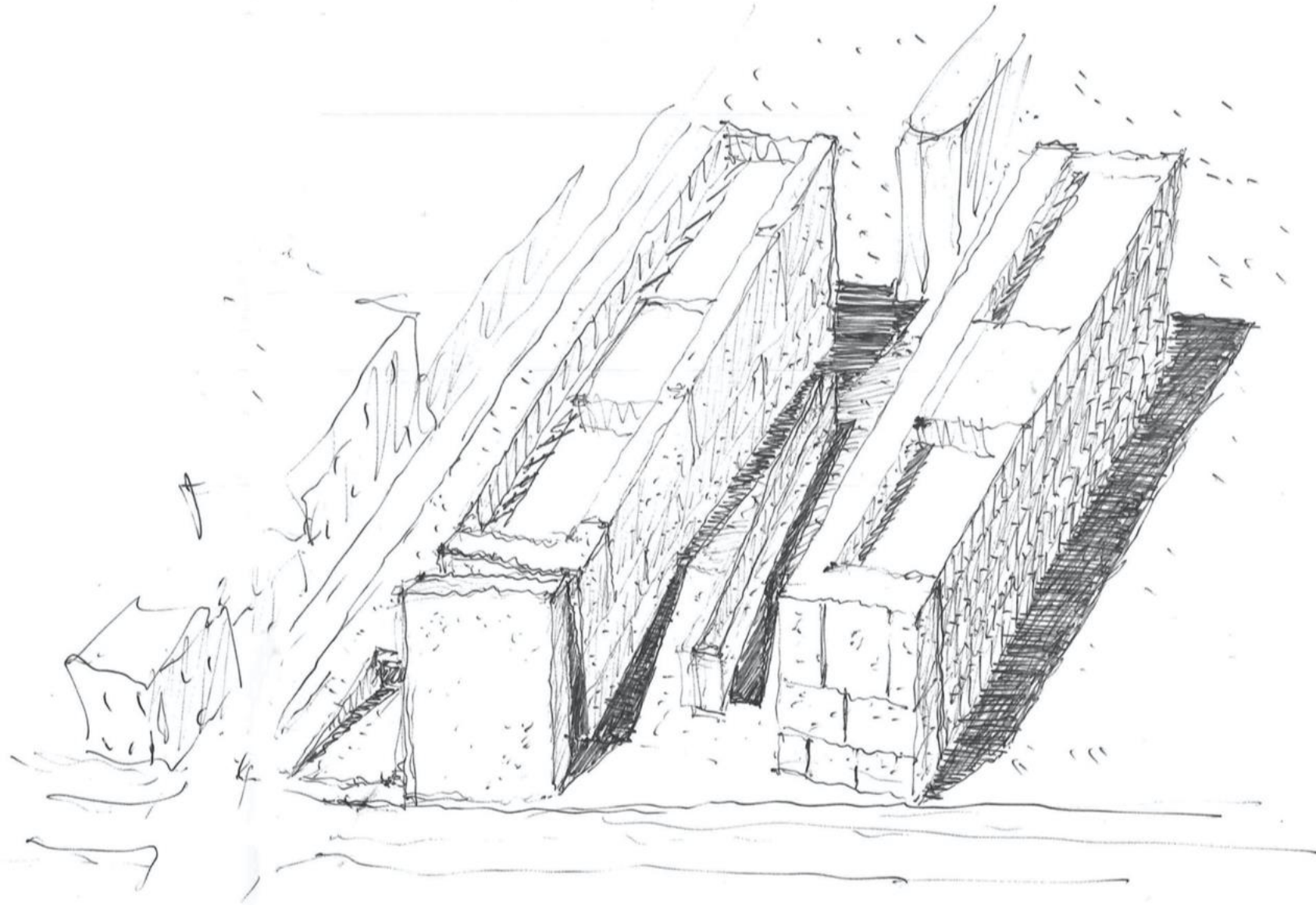
In <https://espacodearquitectura.com/noticias/edp-revela-proyecto-de-premio-pritzker-chileno-para-lisboa/>
(Please refer to slide 9 to see the English translation of the article)



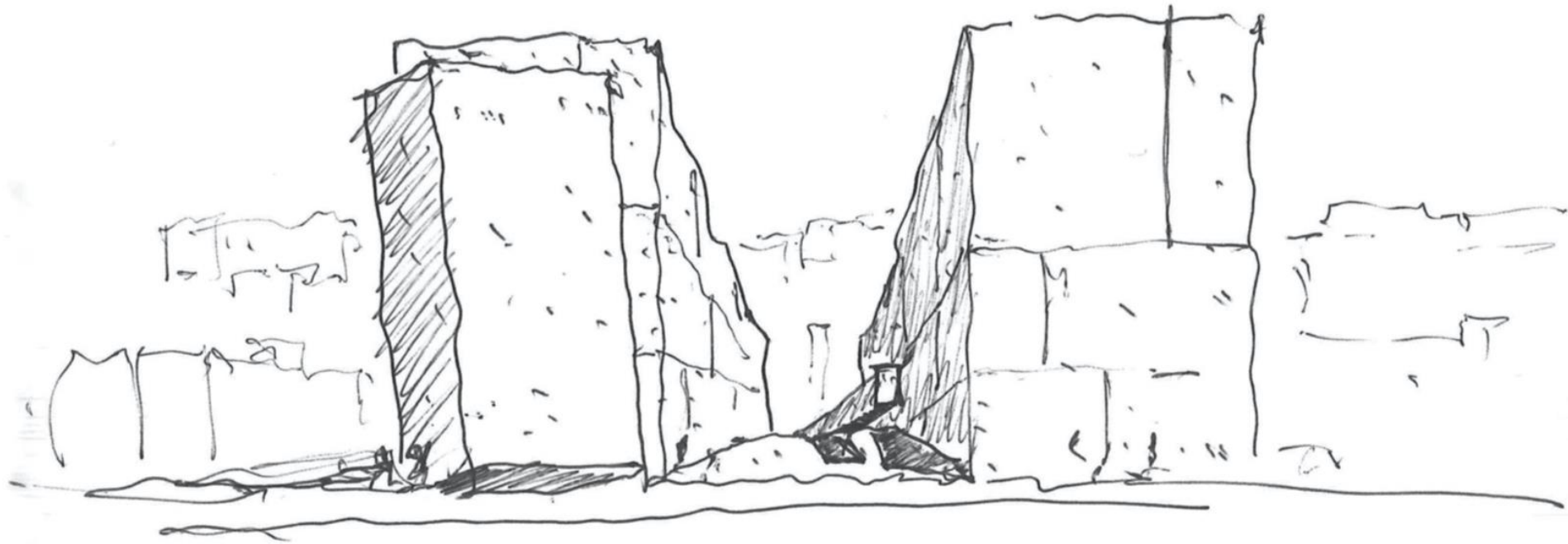
In <https://espacodearquitectura.com/noticias/edp-revela-proyecto-de-premio-pritzker-chileno-para-lisboa/>
(Please refer to slide 9 to see the English translation of the article)



In <https://espacodearquitectura.com/noticias/edp-revela-proyecto-de-premio-pritzker-chileno-para-lisboa/>
(Please refer to slide 9 to see the English translation of the article)

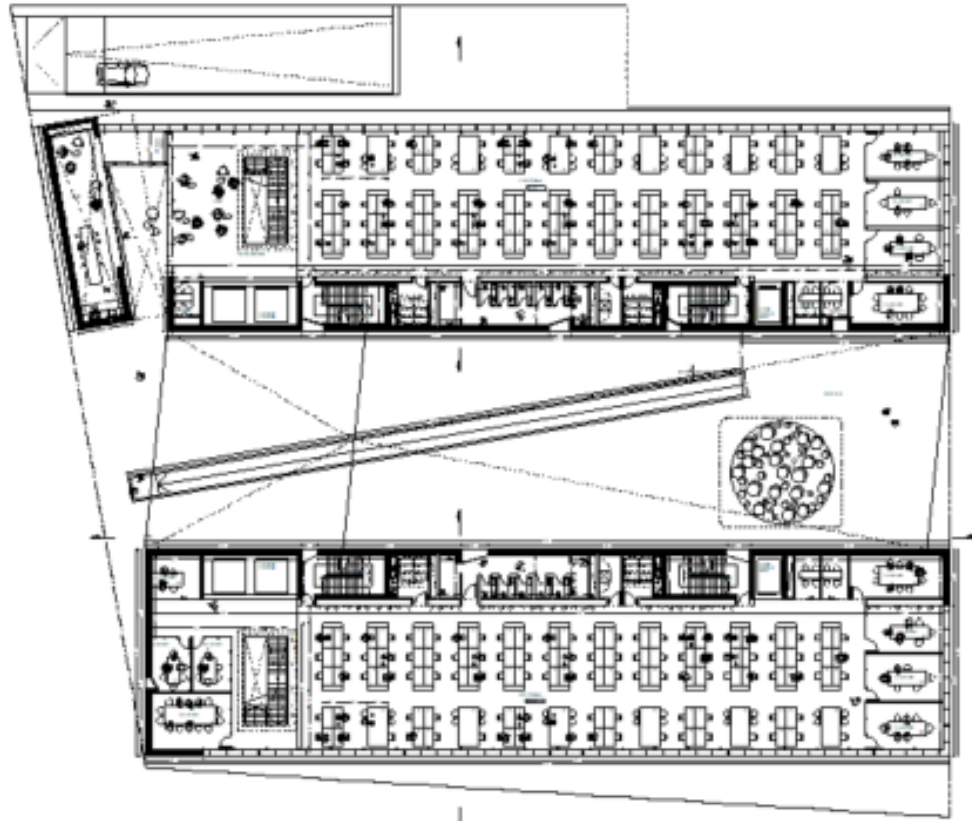


In <https://espacodearquitectura.com/noticias/edp-revela-proyecto-de-premio-pritzker-chileno-para-lisboa/>
(Please refer to slide 9 to see the English translation of the article)

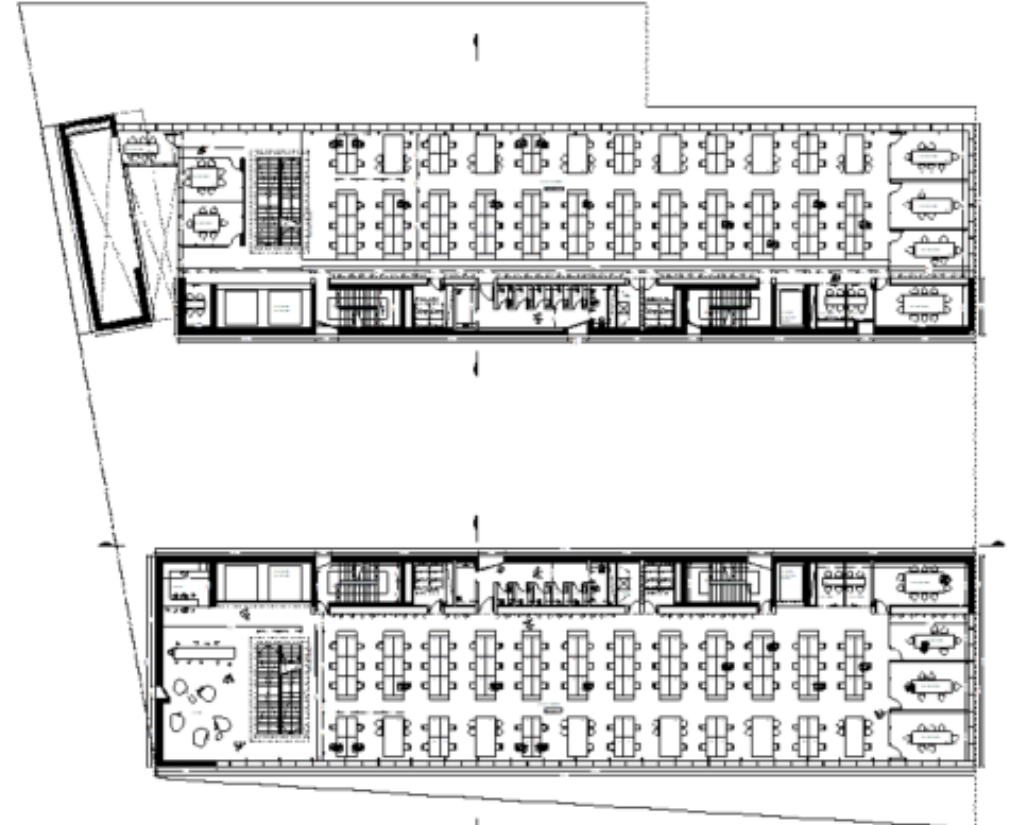


In <https://espacodearquitectura.com/noticias/edp-revela-proyecto-de-premio-pritzker-chileno-para-lisboa/>

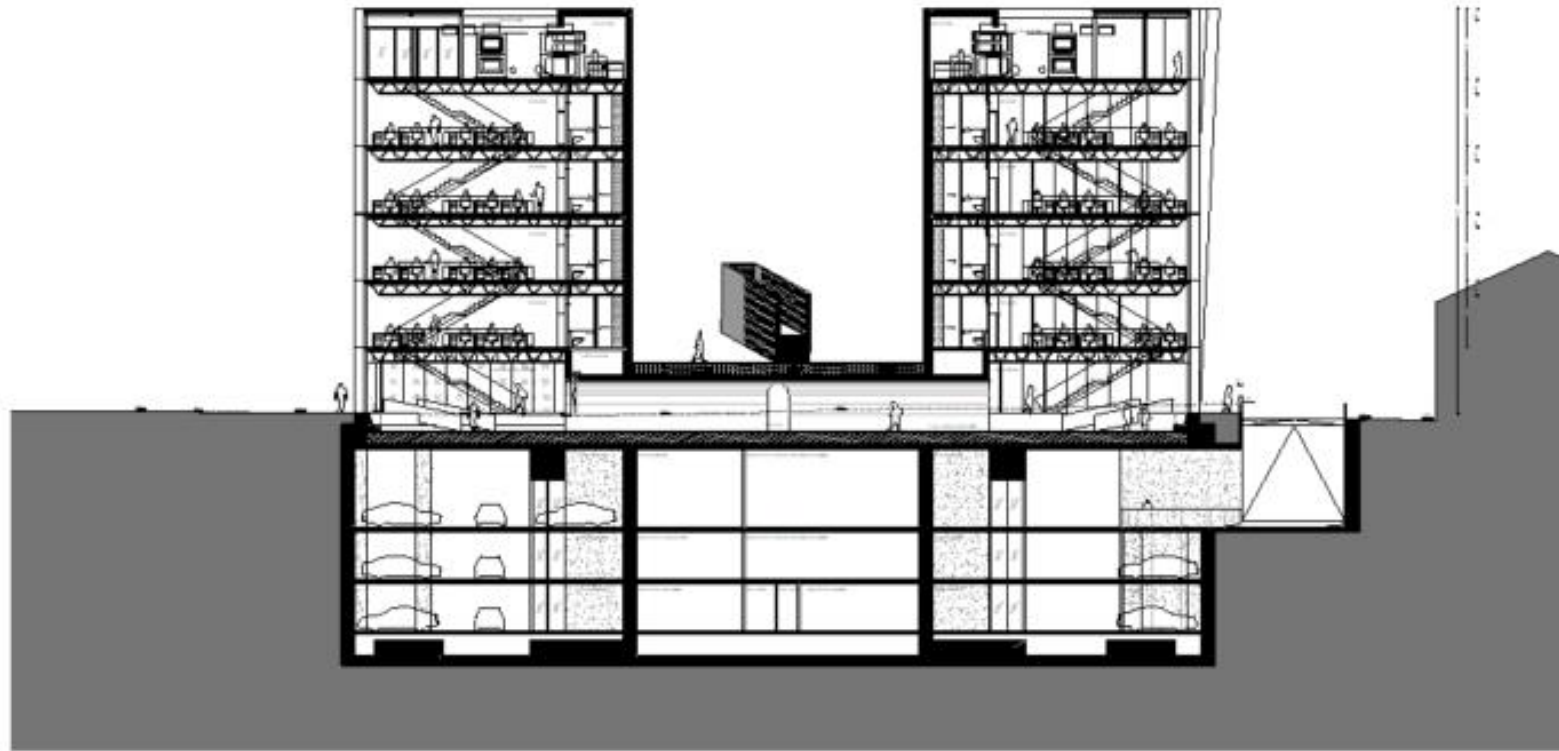
(Please refer to slide 9 to see the English translation of the article)



GROUND FLOOR



ELEVATED FLOOR



TRANSVERSAL SECTION, FACING SOUTH

EDP unveils Chilean Pritzker Prize-winning project for Lisbon

The first 3D images of the building designed by Alejandro Aravena for the second part of the Electric Portuguese Company (EDP) headquarters building have been released.

The weight and texture of concrete are the most public face of the new EDP complex building on the Lisbon waterfront, which construction works will begin in February 2020 on the company's land on the Boavista Embankment. About 800 employees will join the same number already working on the first building built by Manuel and Francisco Aires Mateus, which will now be framed on D. Luís I Street by the architecture of Chilean Alejandro Aravena, Pritzker Prize 2016 winner. As explained by António Mexia, leader of EDP, the windows are designed like slits, with varying width and height, even joining three floors, that are hiding true places of meditation, because work is no longer what it used to be.