

_2008

ISOVER "multi_comfort_house"

school_new educational system

— concept

- The idea is to link and unify several small islands that are mostly isolated in an educational aspect.

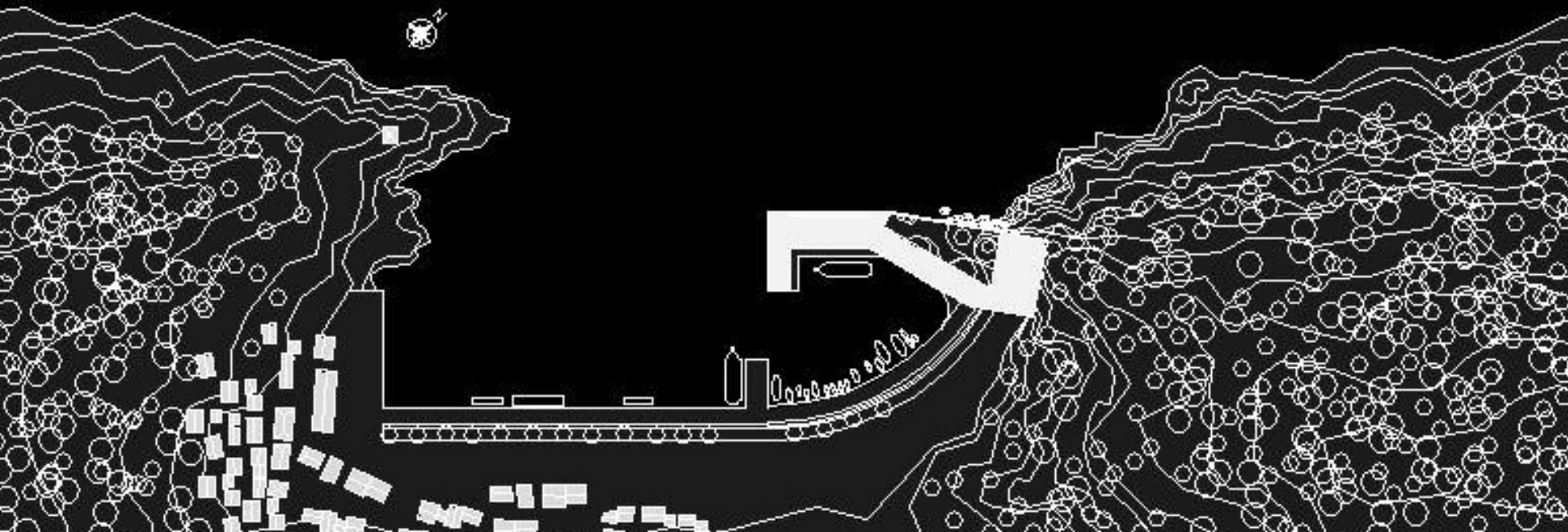


Students of neighboring islands travel to school by boat

... a pier ... dock ... harbour ... school



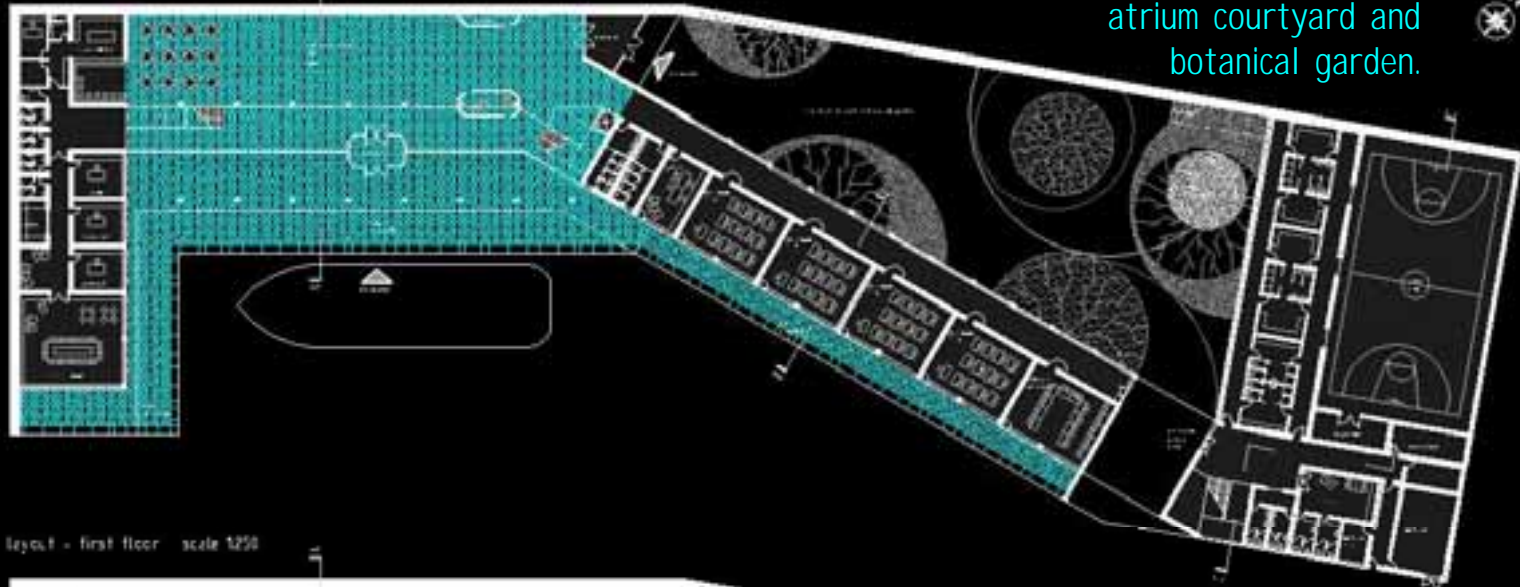
_site plan



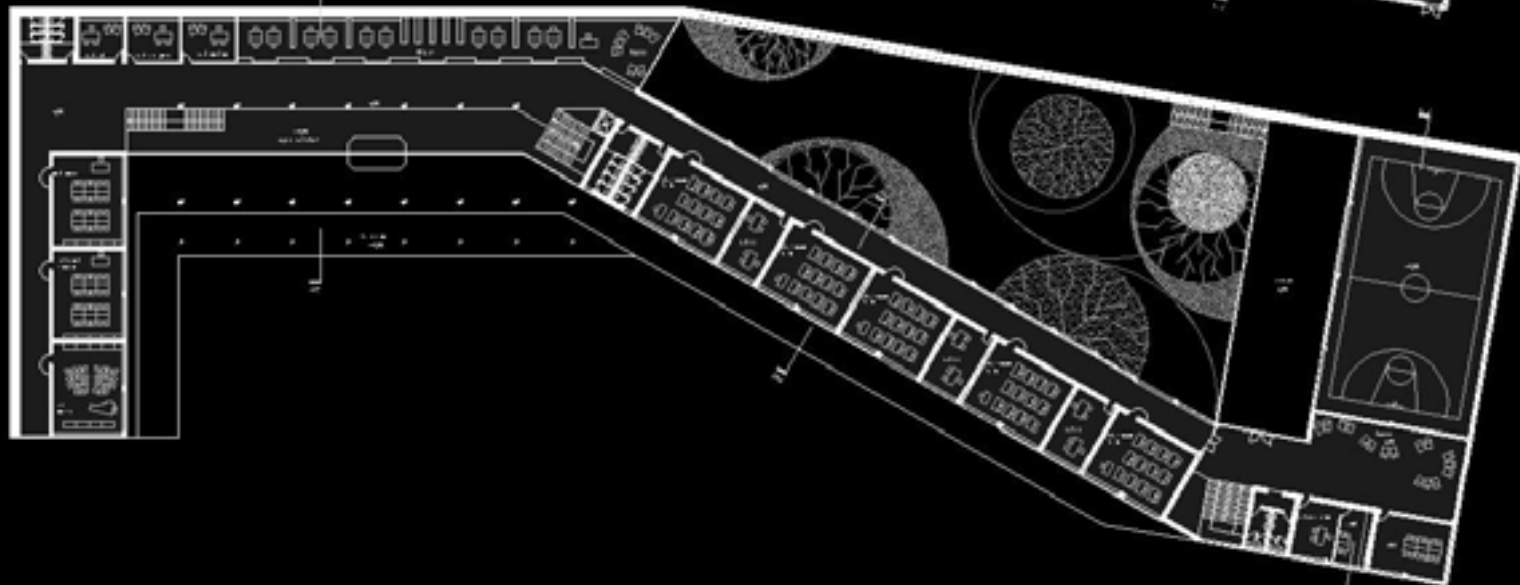
The waterfront is of stone and it “enters” inside the schools interior, which is the multifunctional area.

Entrance in the school is also possible in a “dry” manner (for students and visitors of the island) through a big atrium courtyard and botanical garden.

layout - ground floor - scale 1:250

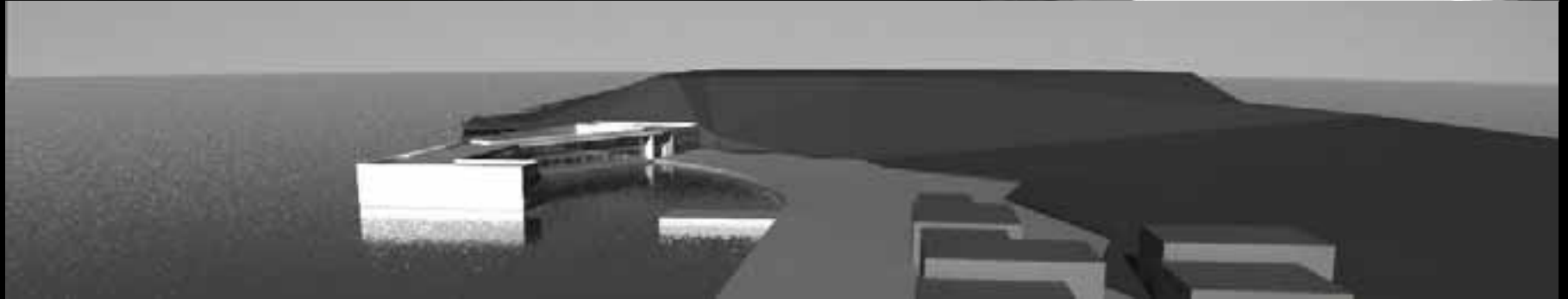


layout - first floor - scale 1:250



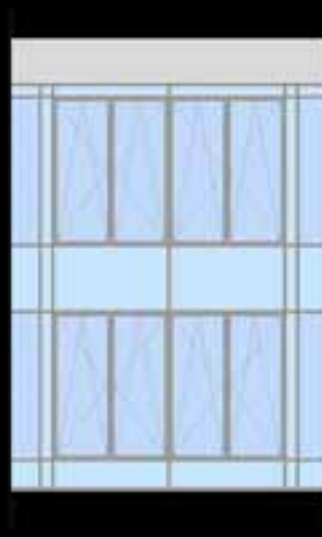
_ view from south





_details

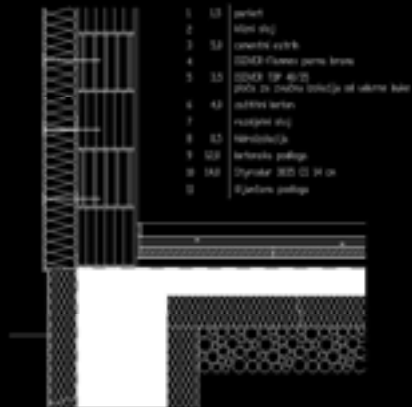
pogled na južno pročelje



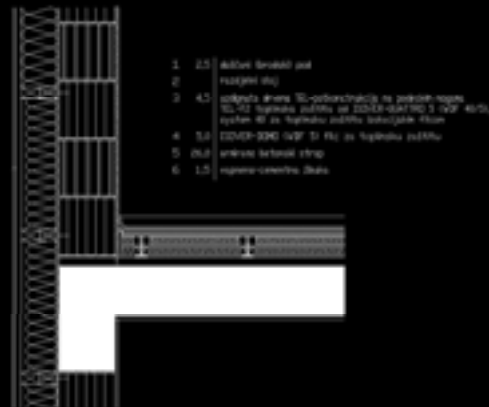
presjek pročelja



Konstruktivni slojevi (cm)



Konstruktivni slojevi (cm)



Konstruktivni slojevi (cm)

