

SHAPE:

- STREET ALIGNMENT
- SOUTH ORIENTATION

CENTRAL COURT
NARROW SPACE BETWEEN WALLS



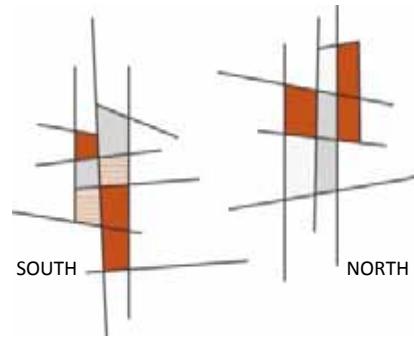
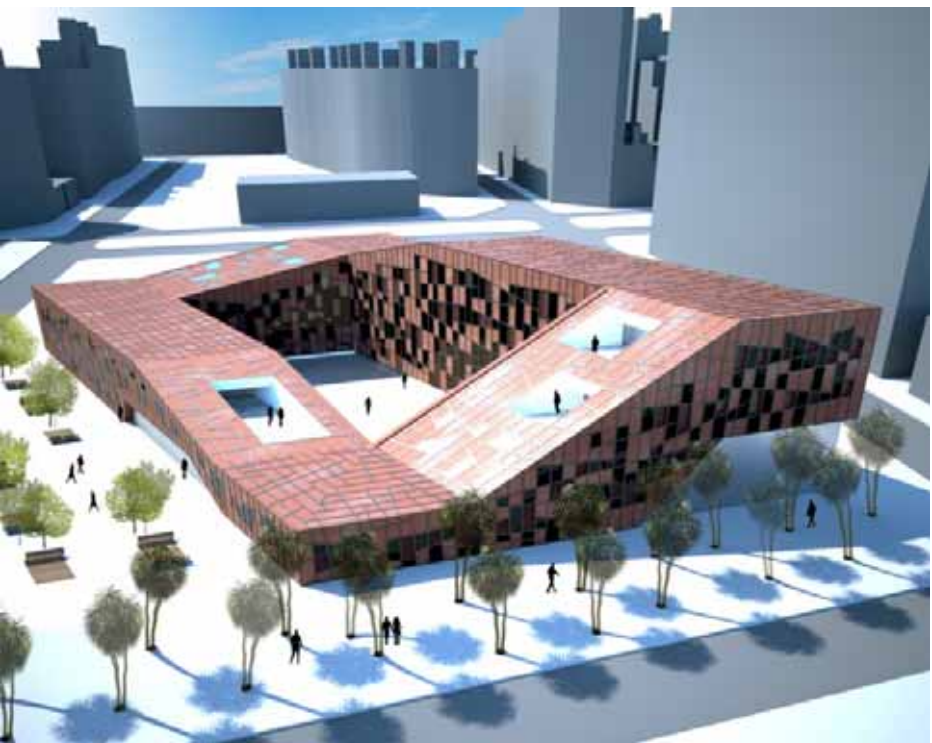
ABUNDANT NATURAL LIGHT

3 ZONES:



**BASED ON THE TYPICAL
BLOCK OF BARCELONA**

- EFFICIENT CROSS VENTILATION
- SEA BREEZES



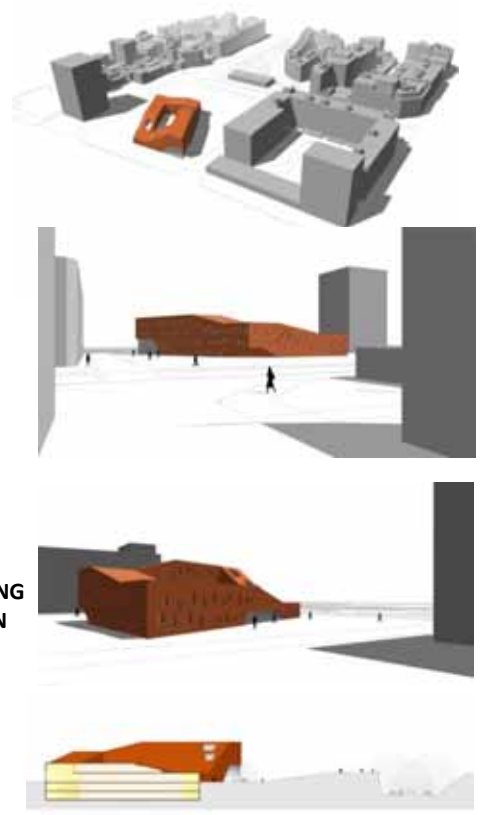
FACADE

1 IMAGE

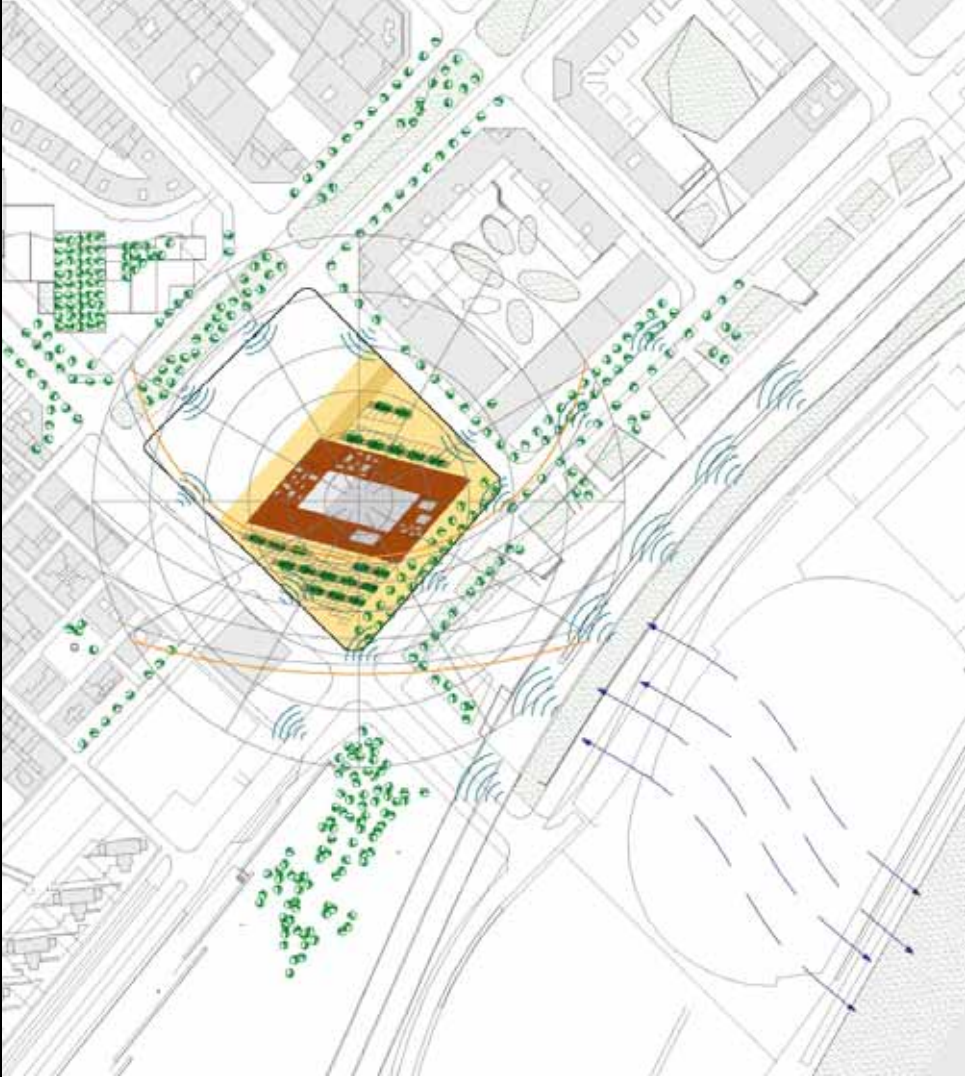
3

**SOLUTIONS DEPENDING
ON THE ORIENTATION**

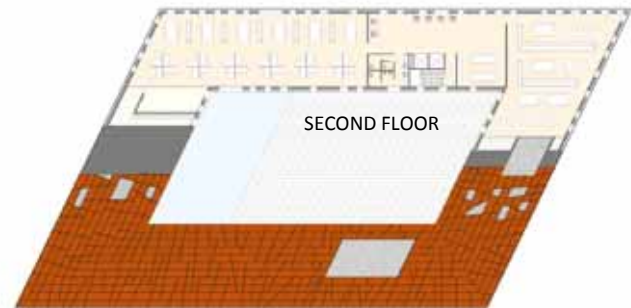
- VENTILATED FACADE
- MATERIALS:
 - CORTEN STEEL
 - GLASS



SITE PLAN

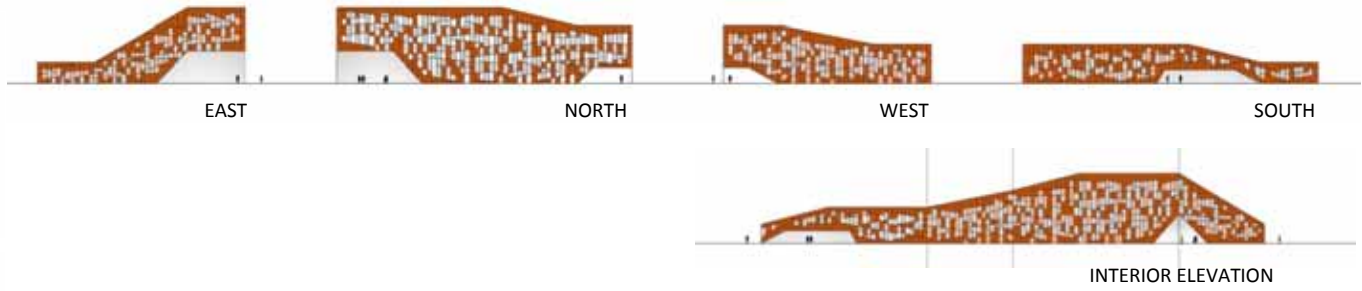


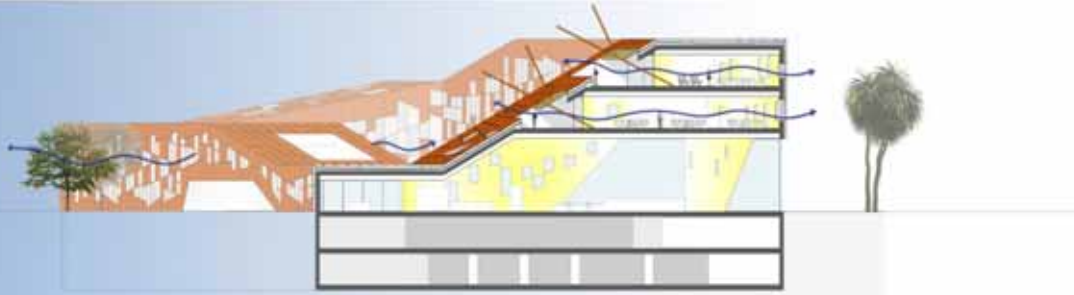
NORTH



3D SECTIONS

ELEVATIONS





EAST SECTION



NORTH SECTION



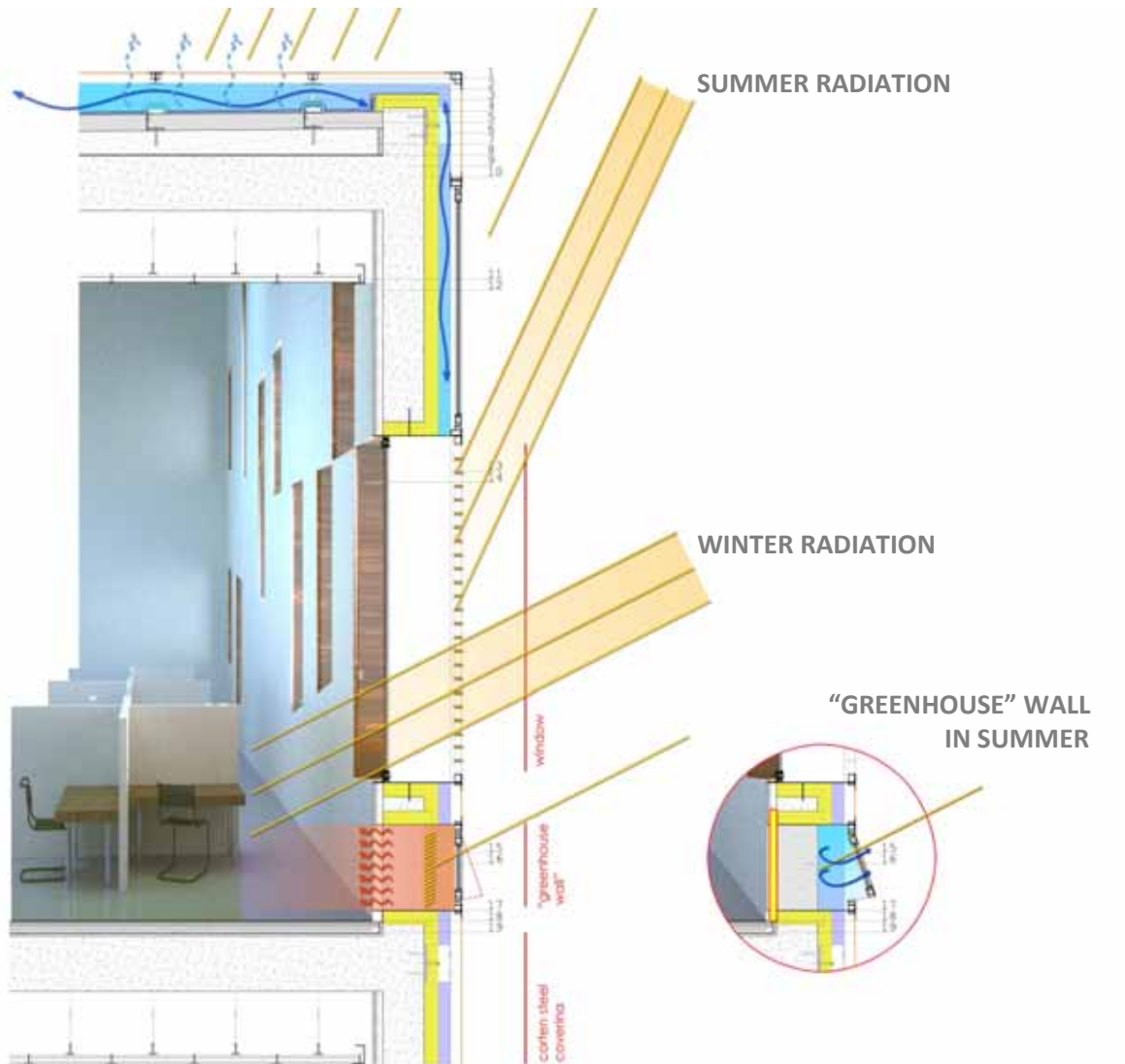
WEST SECTION



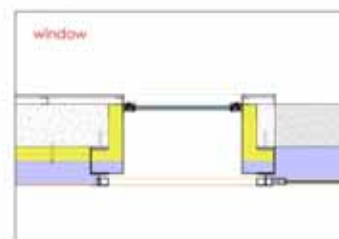
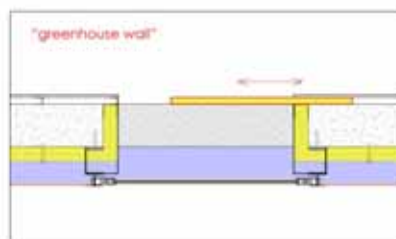
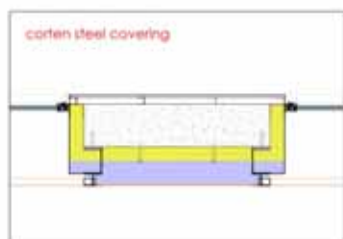
SOUTH SECTION







- 1) Metal profile
- 2) Ventilated air gap
- 3) Level regulator
- 4) Waterproof layer
- 5) Deck insulation (ROOFIX)
- 6) Metal profile
- 7) Cellular concrete
- 8) Steam barrier
- 9) Supporting reinforced concrete wall
- 10) Facade insulation (ECOVENT)
- 11) Acoustic ceiling (ORCHESTRA)
- 12) Plaster wall
- 13) Corten steel lamellas
- 14) Window
- 15) Pivoting window ("greenhouse wall")
- 16) Concrete ("greenhouse wall")
- 17) Frame
- 18) Polyethylene layer
- 19) Mortar layer
- 20) Corten steel
- 21) Pavement on grip mortar
- 22) Soundproof insulation (PANEL SOLADO)



U VALUES

Facade: $U = 0,29$

Deck: $U = 0,25$