

"I am FRAMEWORK"

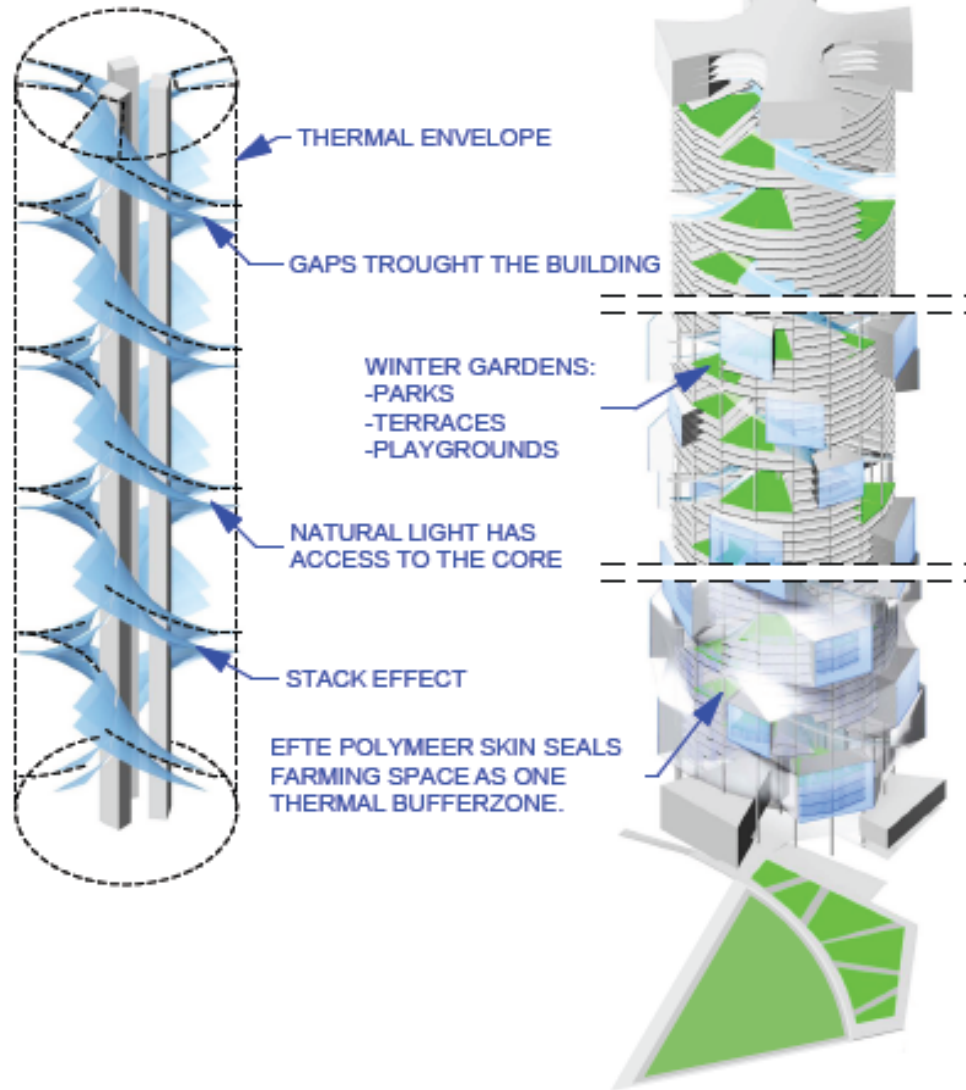


Niko Mähönen, FINLAND

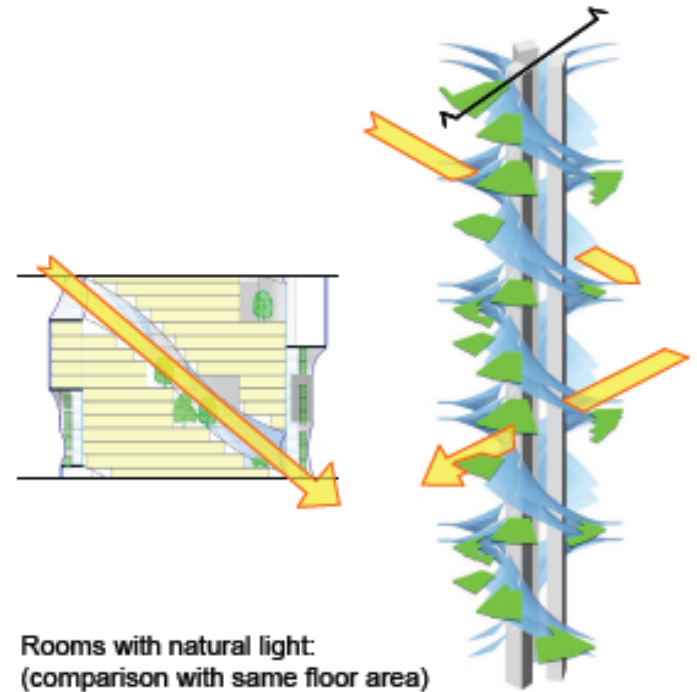
MASSING

EMPTY VOLUME

INDOOR SPACES
/ BUILDING SKIN



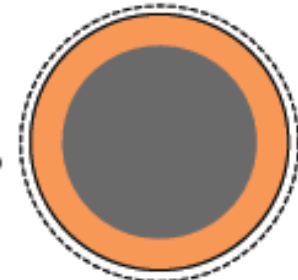
NATURAL LIGHTNING



Rooms with natural light:
(comparison with same floor area)

Typical

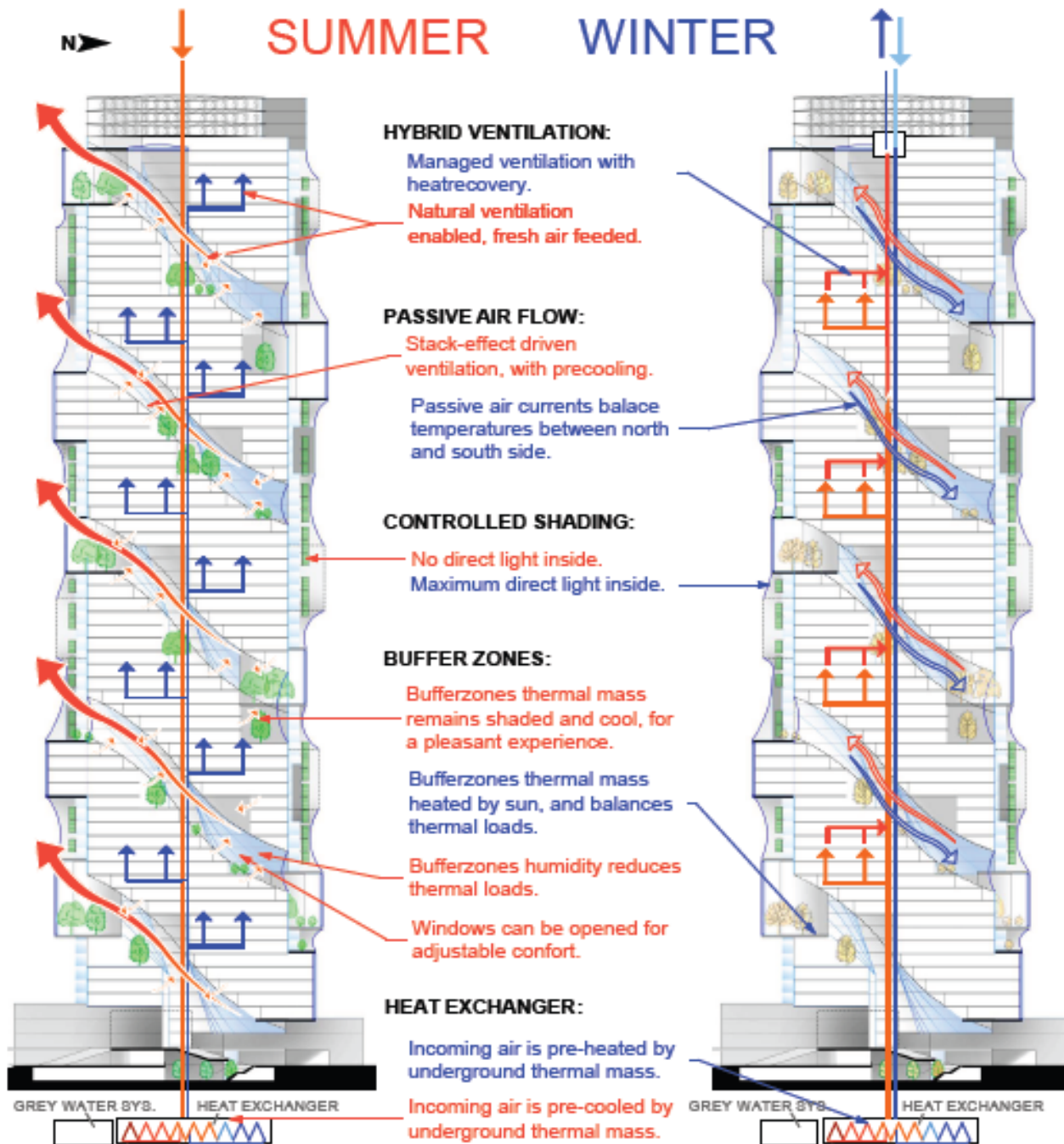
43%



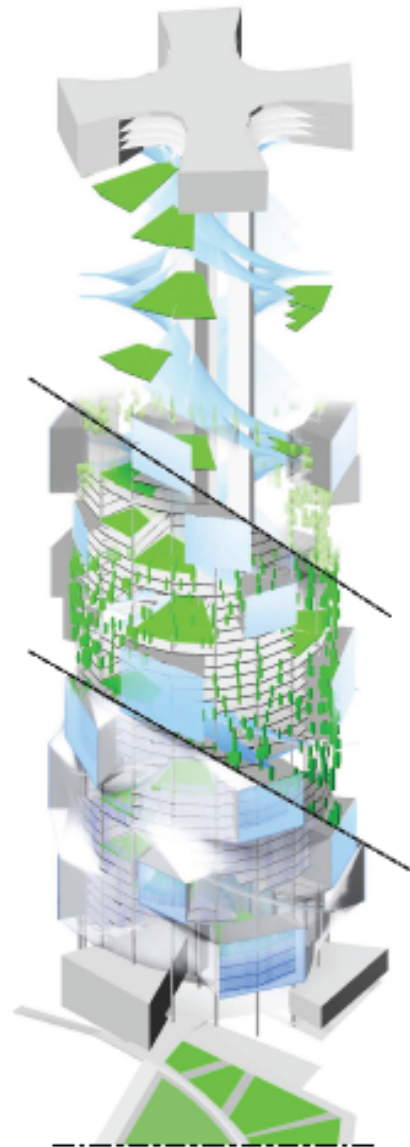
Design proposal:

78%





THERMAL CONCEPT



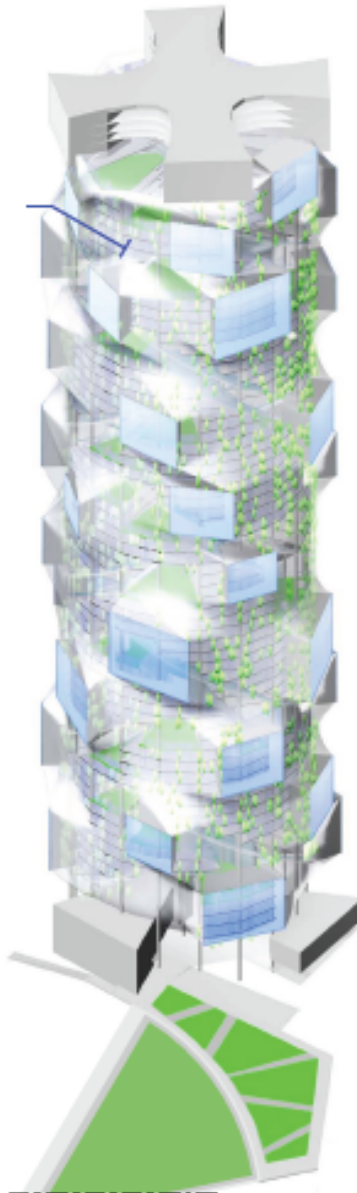
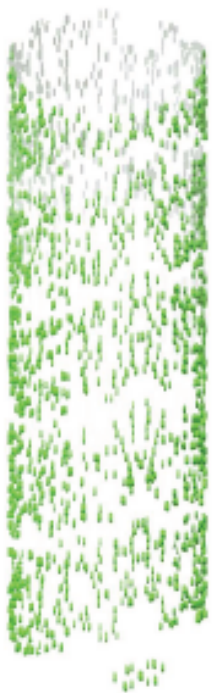
- 1. Buffer zone: Greenhouse
 - Controlled shading
 - Farming
 - Water recycling
- 2. Buffer zone: Wintergarden
 - Active thermalmass
 - Nature connection
 - Extension space
- 3. Buffer zone: Exterior walls

SELF SUFFICIENCY

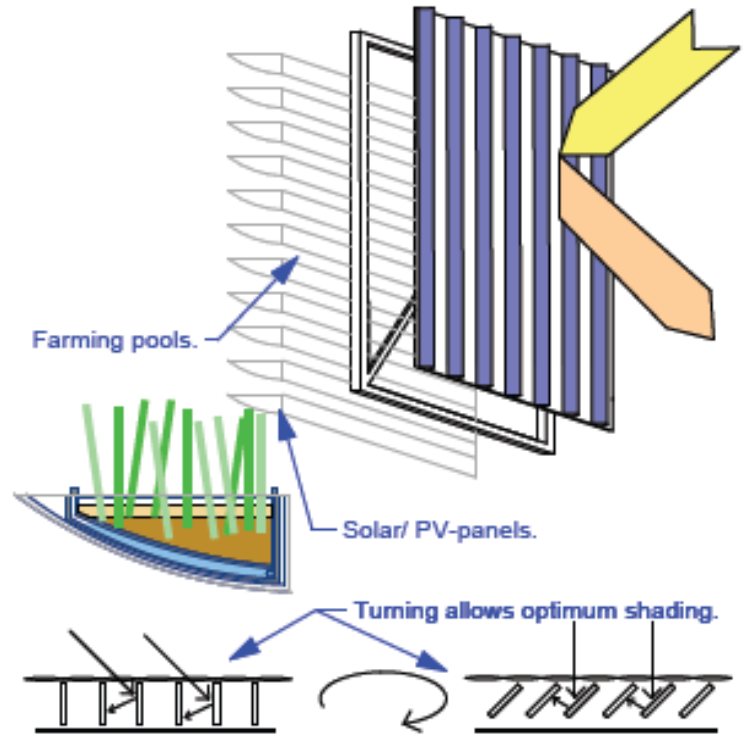
FARMING

Greenhouse farming is integrated to the building, so it forms a bufferzone between exterior and interior. Farming units enable controlled shading. This way the indoor environment is controllable both in semiwarm and warm spaces.

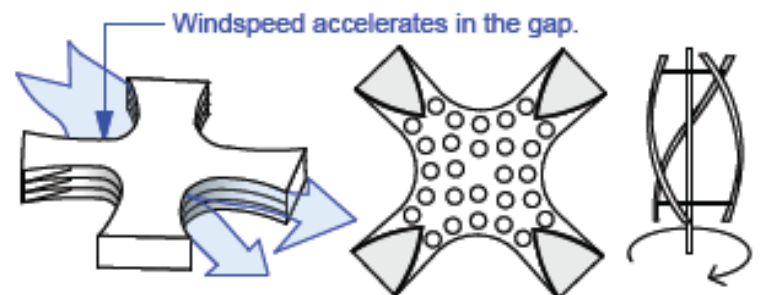
FARMING + *SKIN* =

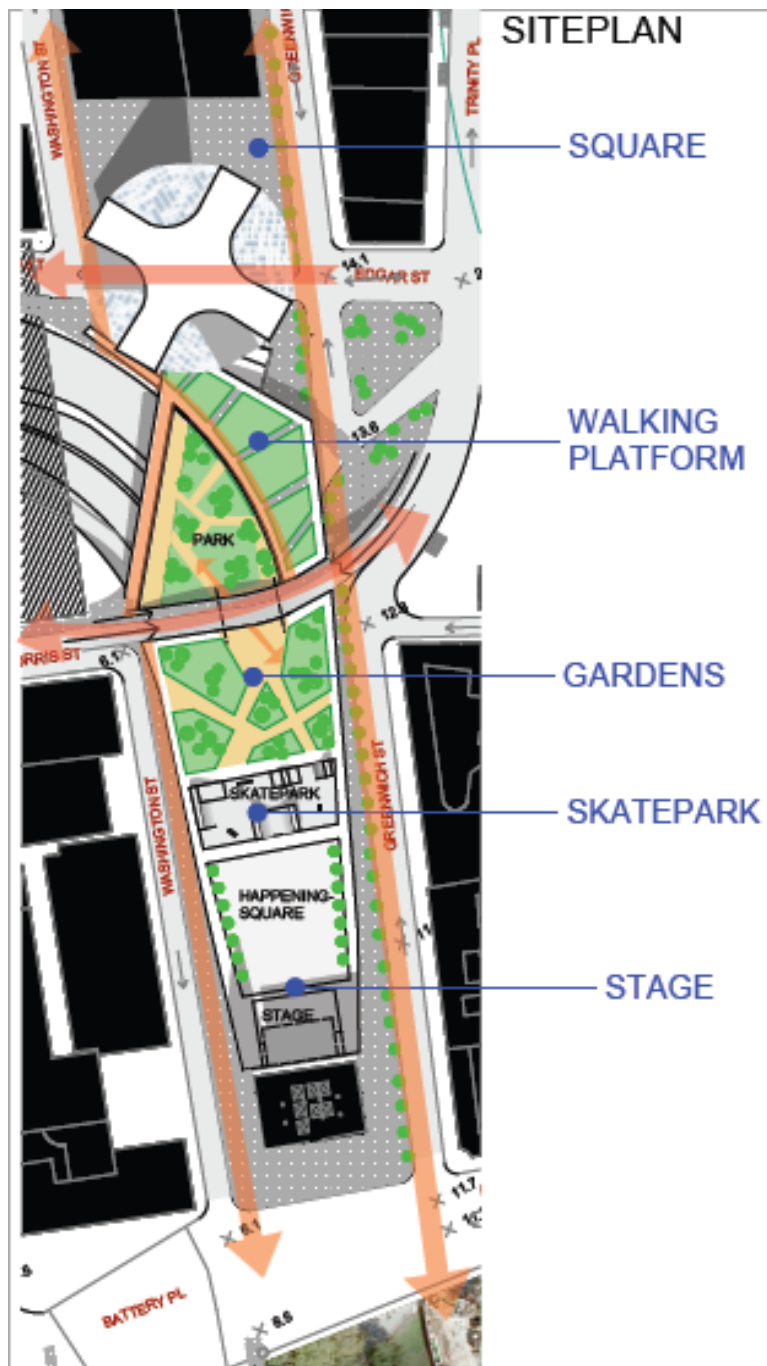


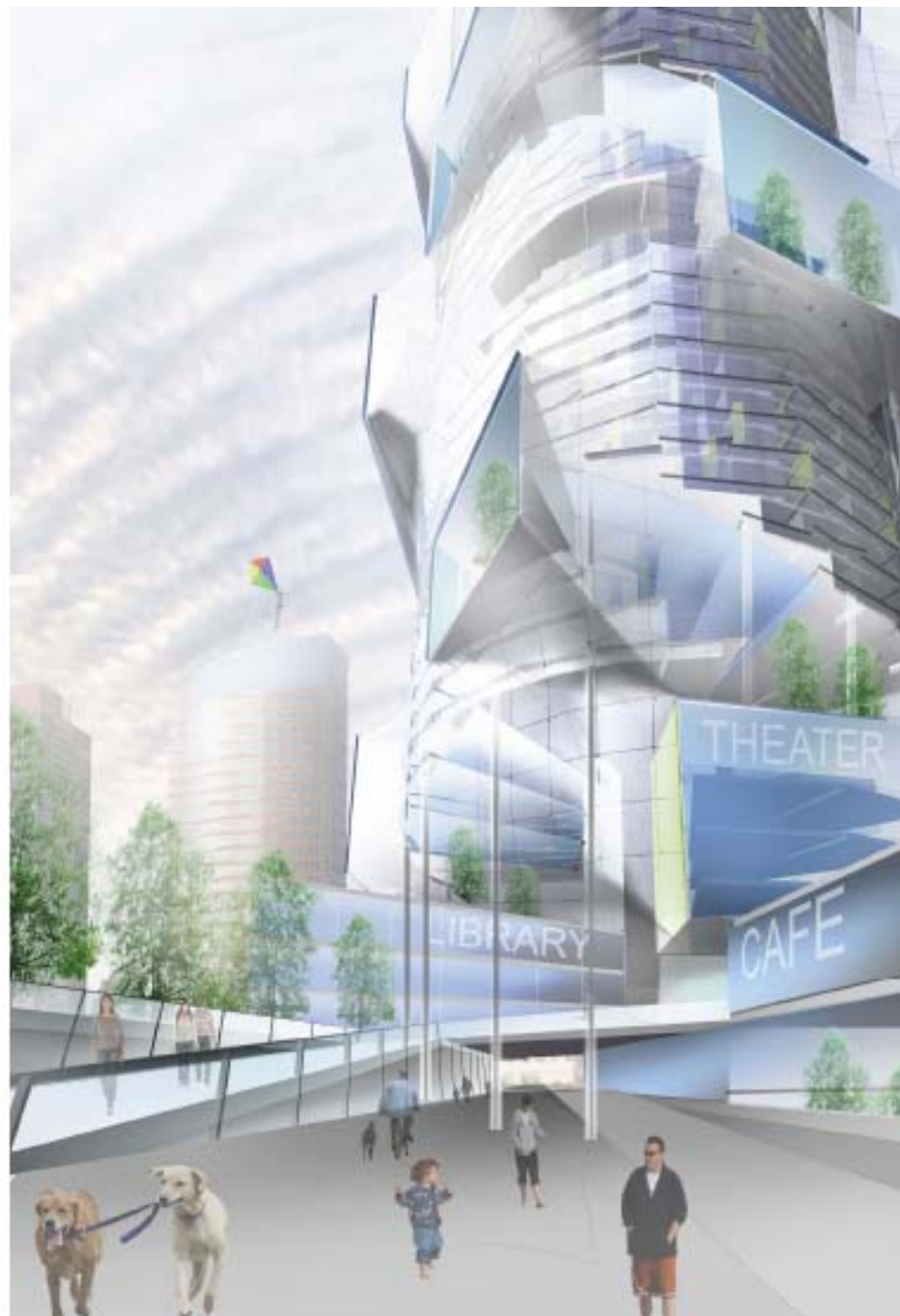
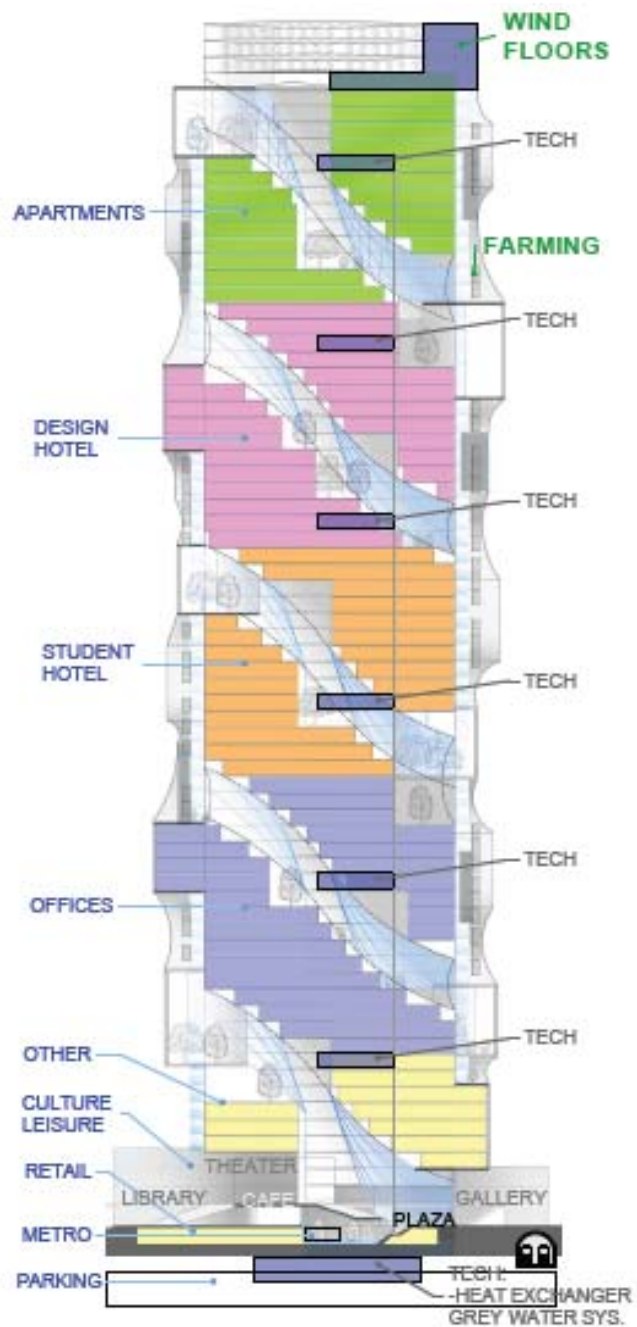
FARMING UNITS/ PV-PANELS



WIND POWER







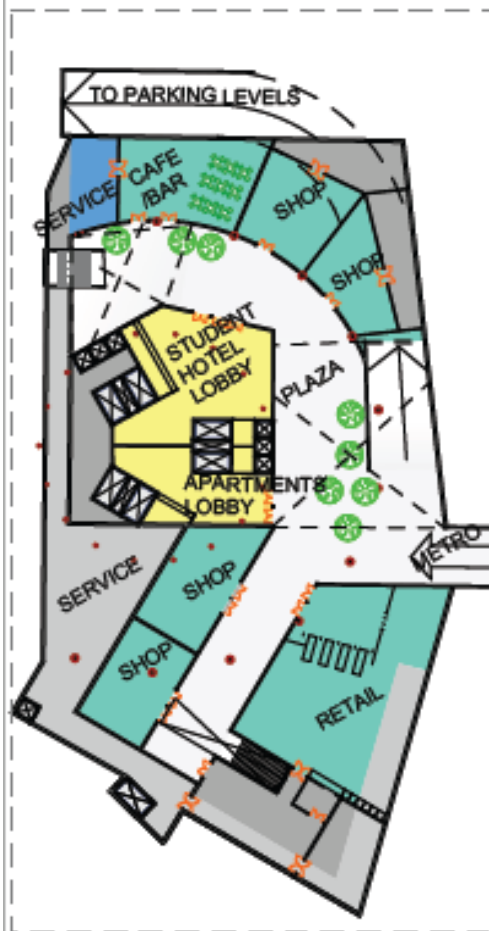
LOBBY

COMMERCIAL

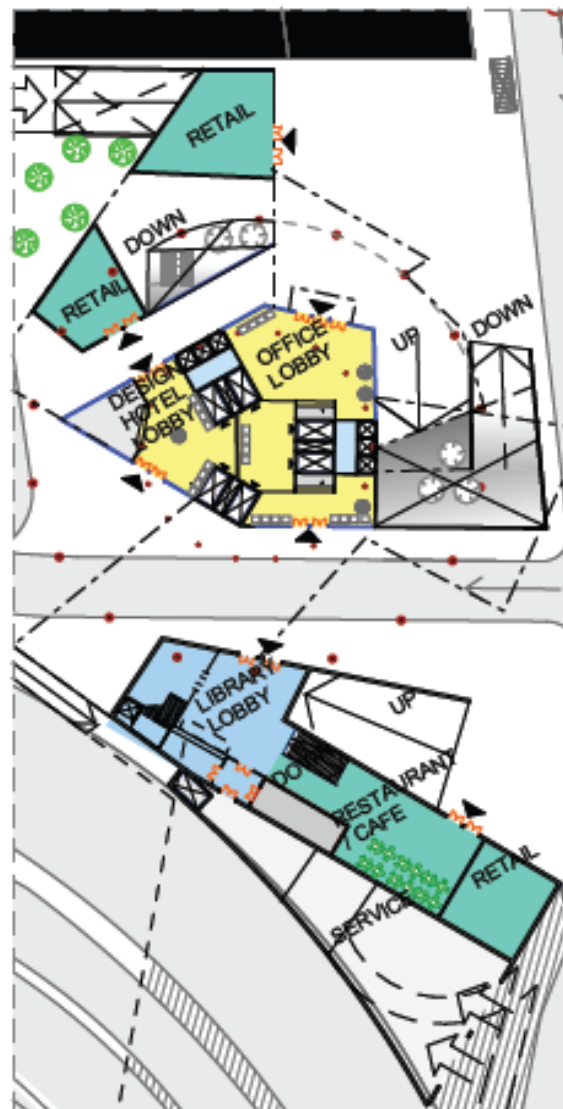
LIBRARY

CULTURAL

LEVEL -1 1:500



GROUND LEVEL 1:500

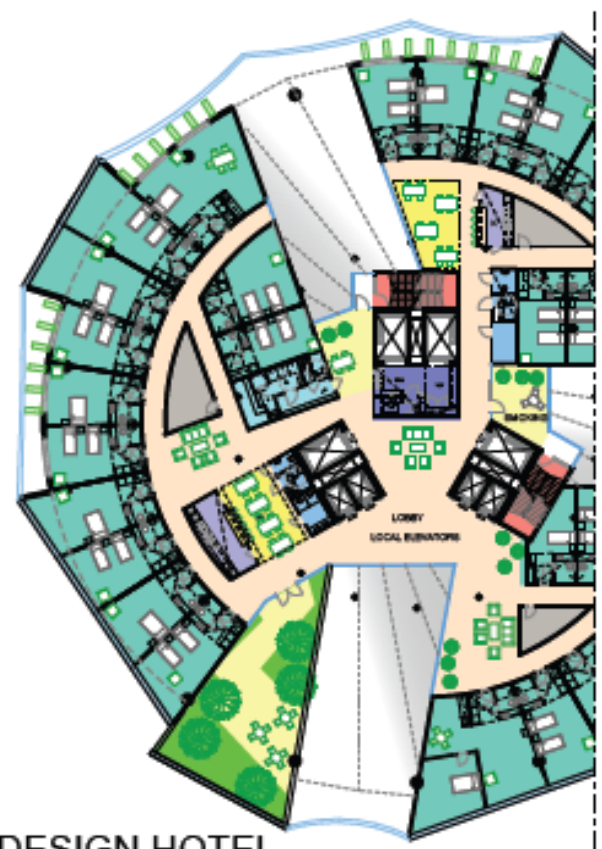


UPPER LEVEL 1 1:500





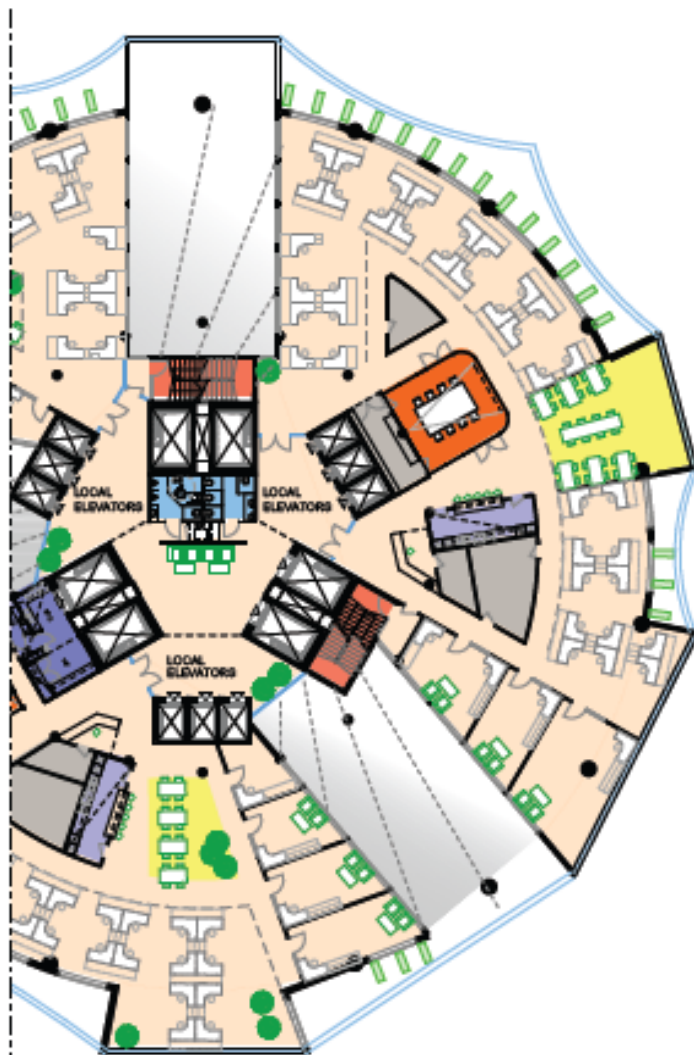
APARTMENTS



DESIGN HOTEL

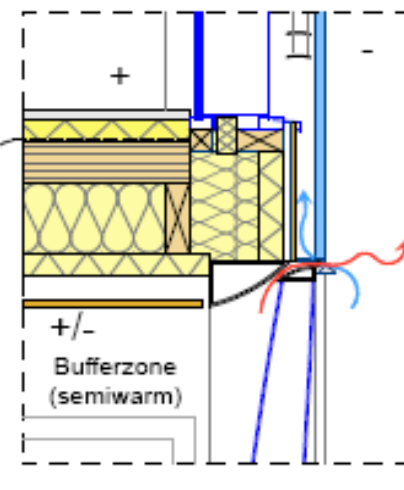
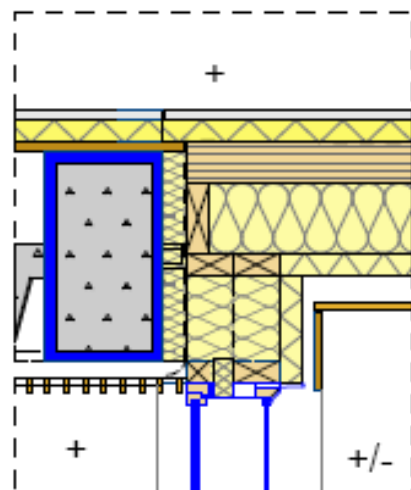
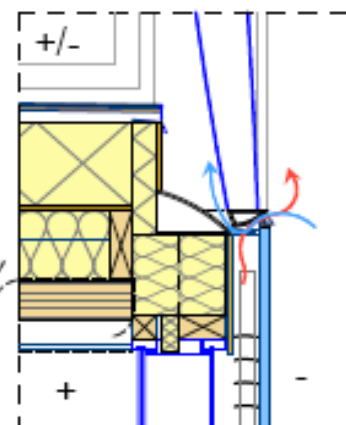
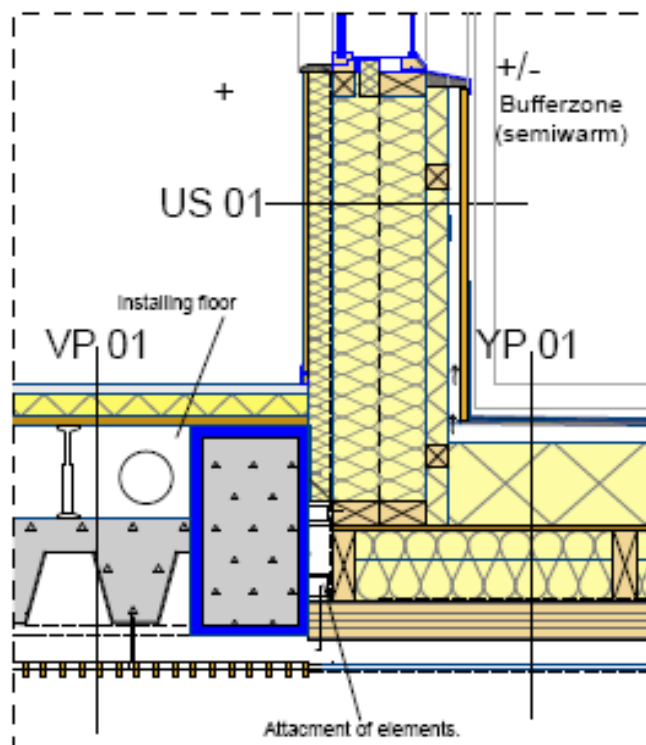
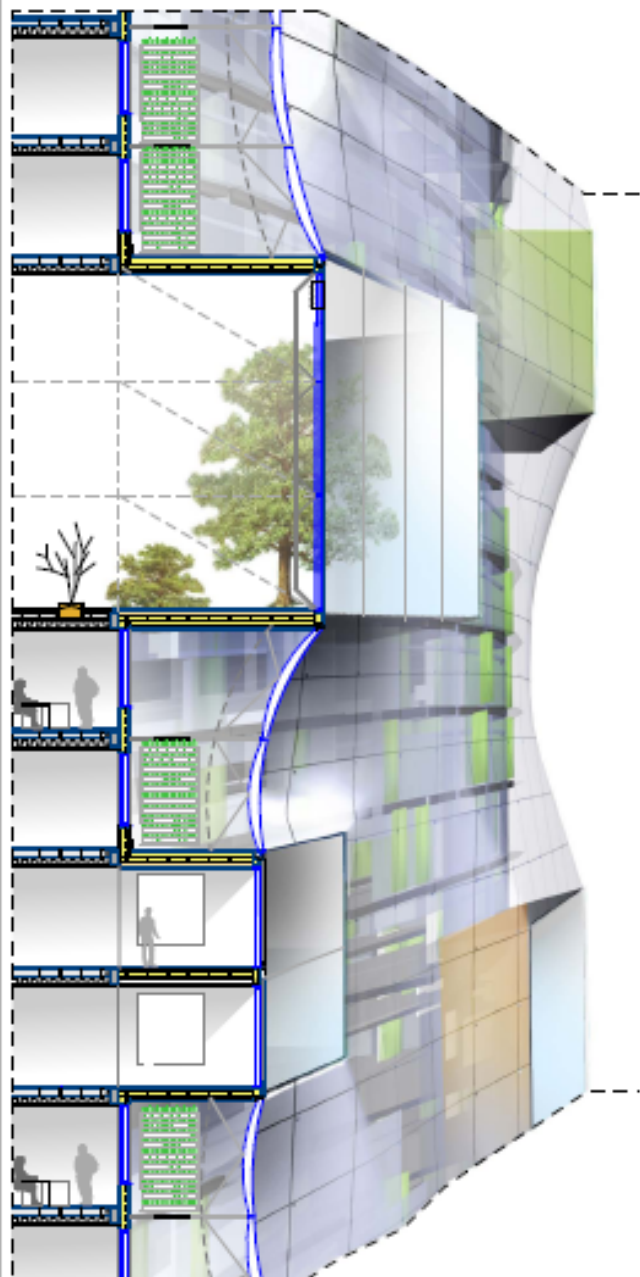


OFFICES



WINTER GARDENS





THANKS!

DĚKUJI!

MERCI BEAUCOUP!

DANKE!

ISOVER Multi-Comfort House STUDENT COMPETITION 2011

"I am FRAMEWORK"

Niko Mähönen, FINLAND

