

# Charming Dubai

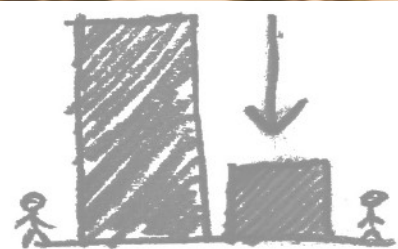
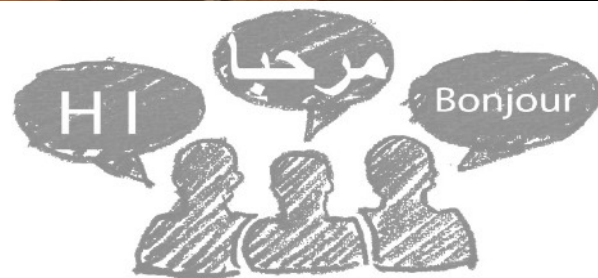
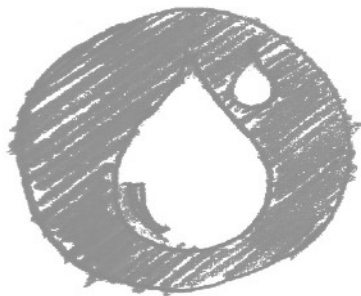
A Place for Intercultural Cooperation



Presentation No. 24  
MULTI-COMFORT HOUSE  
STUDENT CONTEST EDITION 2018

Germany - Dill Khan, Tobias Bretz





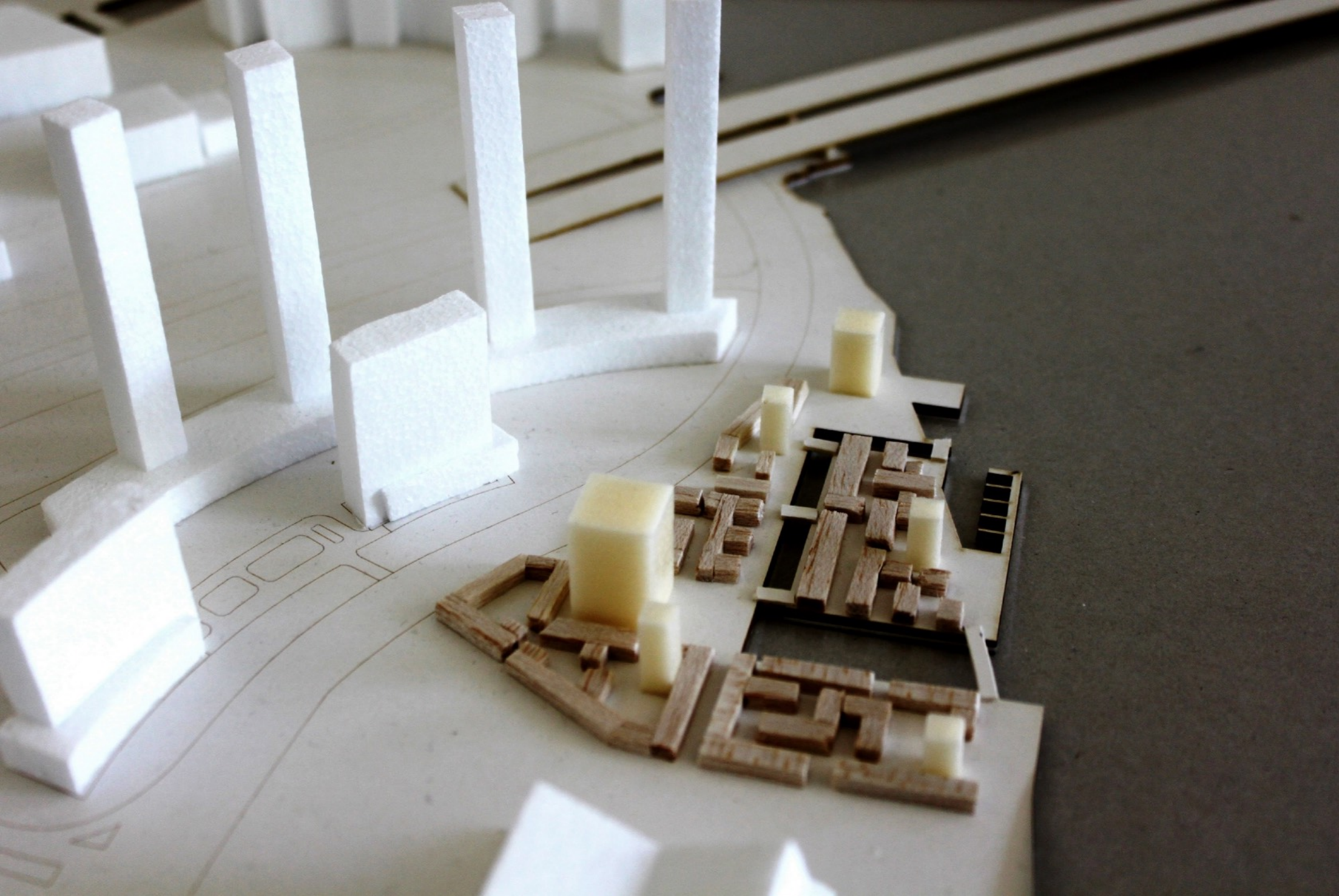




Plot Area

Urban Context





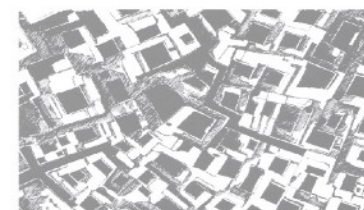




Aligned with:

Library Axis

City Axis

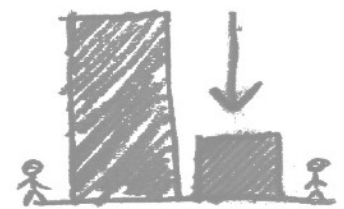






Orientation

Via High-Points



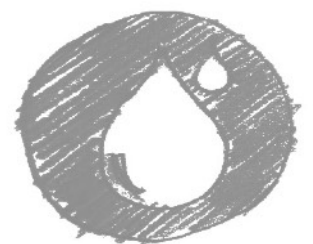




Water Canal

Natural Cooling

Green Spaces







Public Area  
Theater  
Gym  
School  
Kindergarten  
Gallery  
Shop

Atelier

Local Supplies  
Café  
Ice Café  
Shishabar  
Restaurants  
etc.

Housing

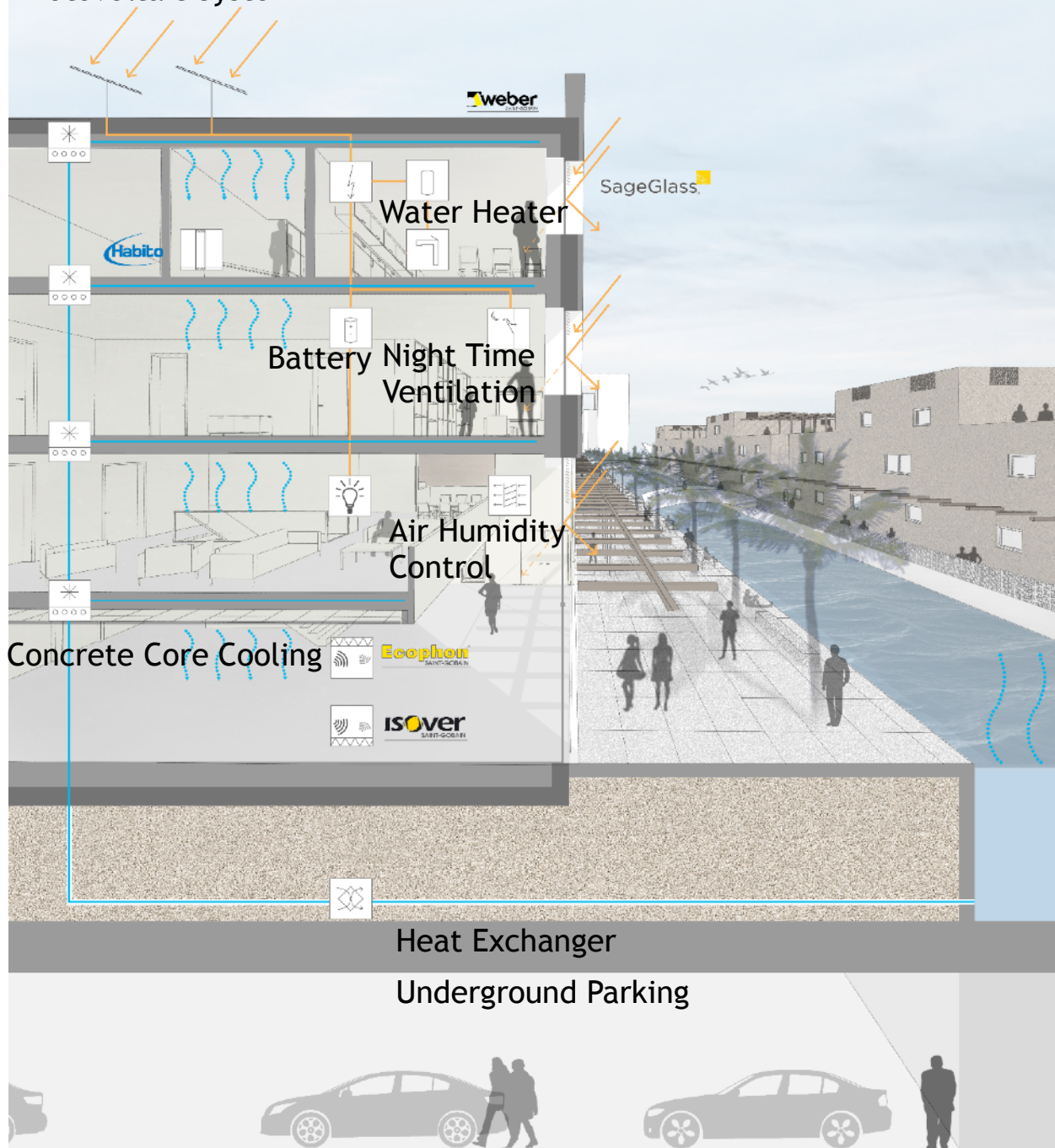




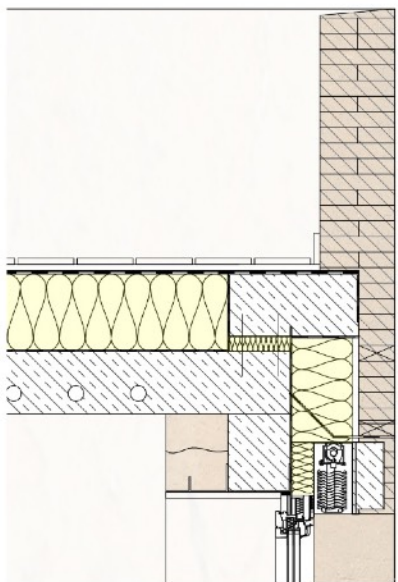




# Photovoltaic System



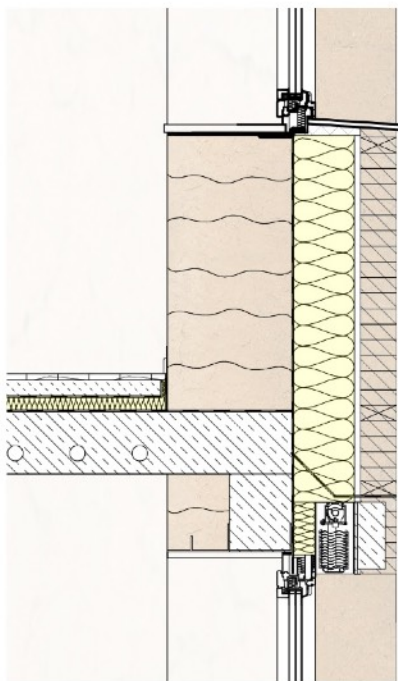




Insulation flat roof:  
Metac FLP 1 Duratec

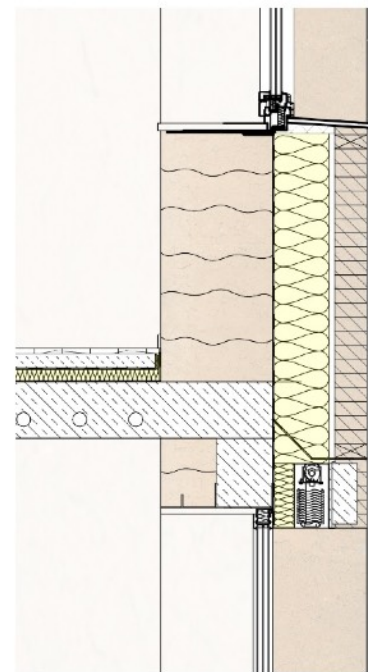
Reinforced concrete  
(Concrete core cooling)

Windows:  
SageGlass® Clear w/SR2.0



SageGlass®  
Parquet floor

Floating screed:  
weber.fool 4060 CT-C40-F7

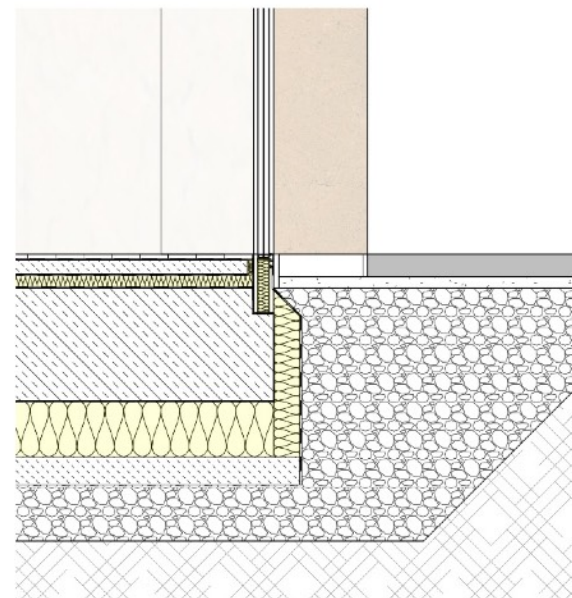


Curtain wall:  
Clay brick

Wall Insulation:  
RS 021 Facade plus ultra

Clay wall

Venetian blinds



Perimeter insulation:  
Styrodur 2800 C foam board



Blinding layer

Gravel layer



Thank you for your attention

