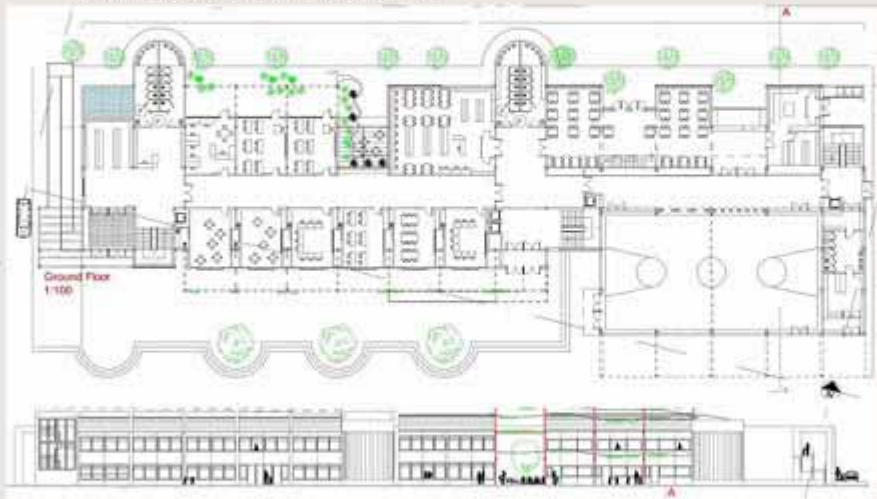


The Great Communion School

Ideas and concepts behind the project



The exterior space of the south zone of the school is conceived as a public space, a wooded square, with zone of games and a structure that gives shade in summer.



In the north front we find a succession of activities from the east to west find the dining room - restaurant, Bathrooms tower, the library and classrooms, this front also has a metallic structure that generates one native sets mas on having been full of vegetation.



The general concept: The integration of the school in the community in which it is implanted, complementary functions Opened to the public are: the school restaurant, the library and the multiple building destined to be cultural or religious audience and sports space.

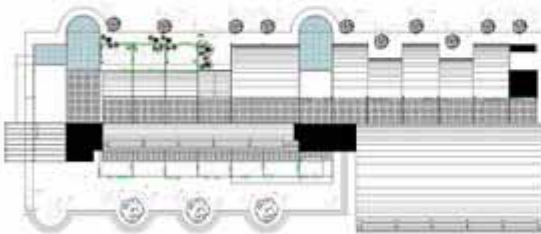
Multi Confort - House School

A new concept for learning

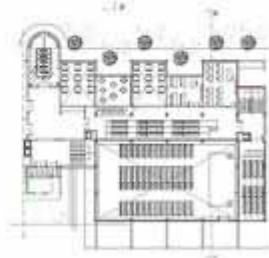
Roxana Lopera B - Spain



Section



Roof Plant 1:200

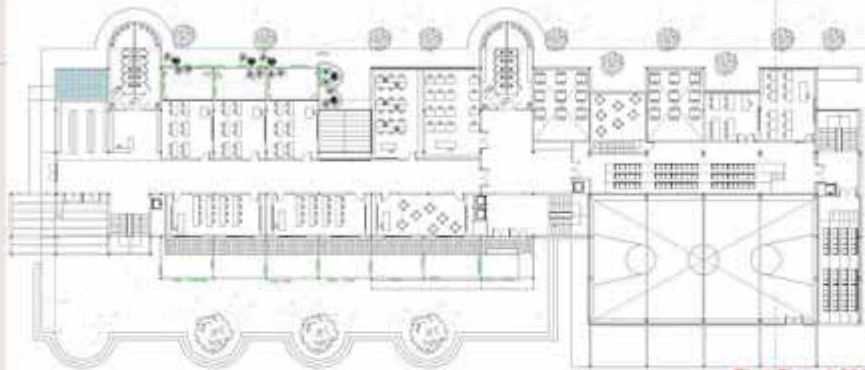


Multi confort - House School

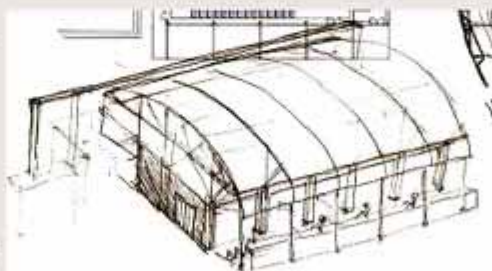
In the zone of the multiple room the strongest structure rises up to the cover turning into a species of aqueduct that gathers the water of the cover and the ride up to the water tank.

Multi Confort - House School

A new concept for learning Roxana Lopera B - Spain



First Floor 1:200



Multi Confort - House School

A new concept for learning Roxana Lopera B - Spain