



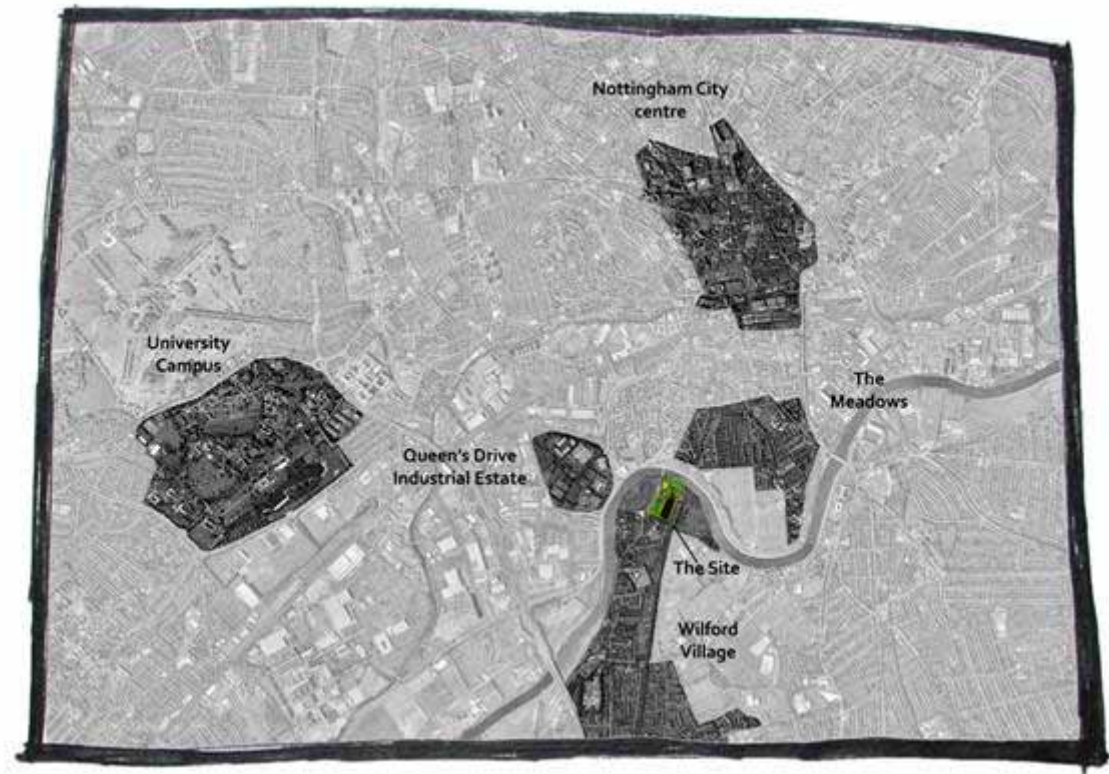
THE OFFICE IN THE FOREST

ROSIE CONNORS

JESS THURLBOURN

RUPERT RATHBONE

THE OFFICE IN THE FOREST



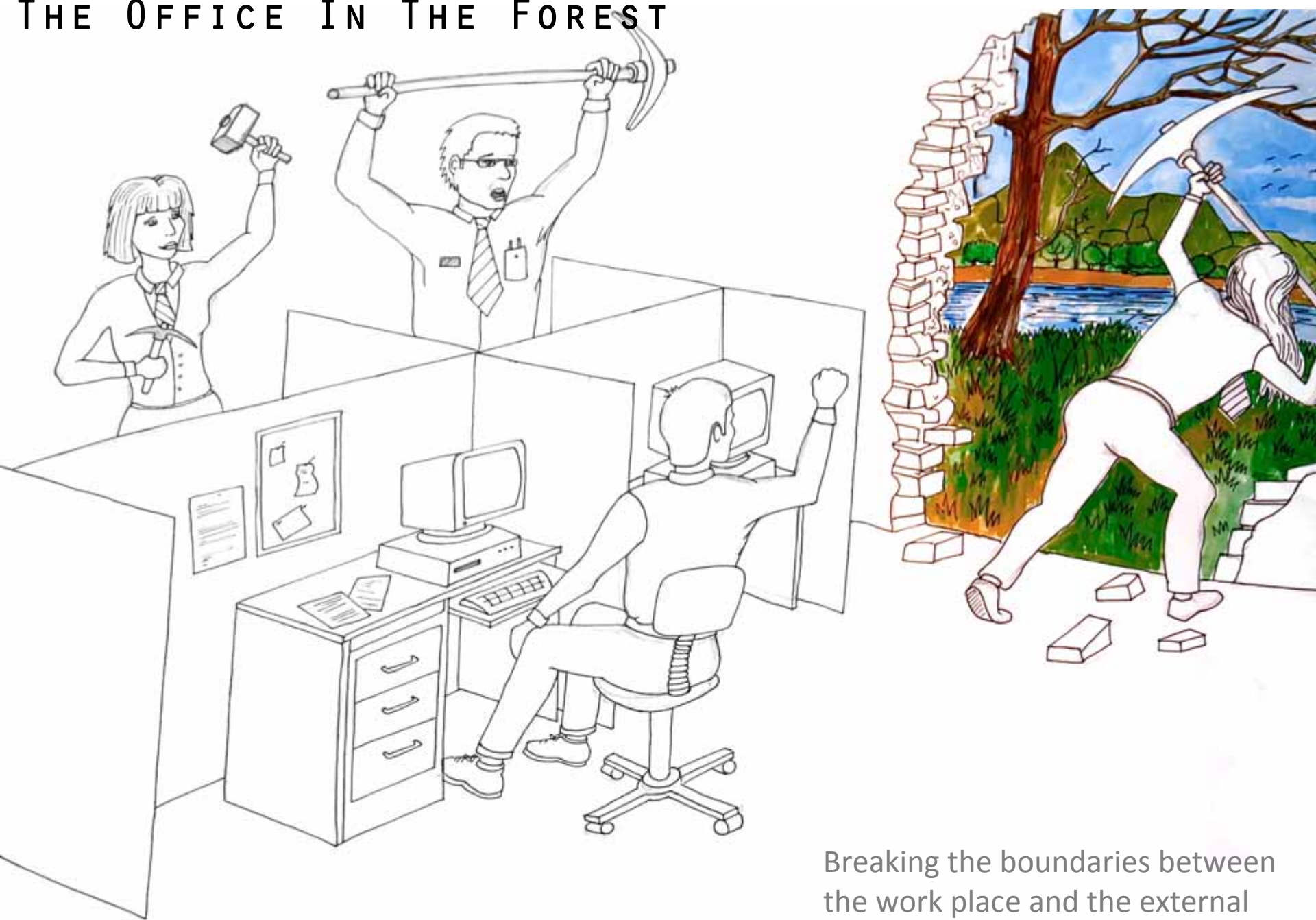
THE OFFICE IN THE FOREST



THE OFFICE IN THE FOREST

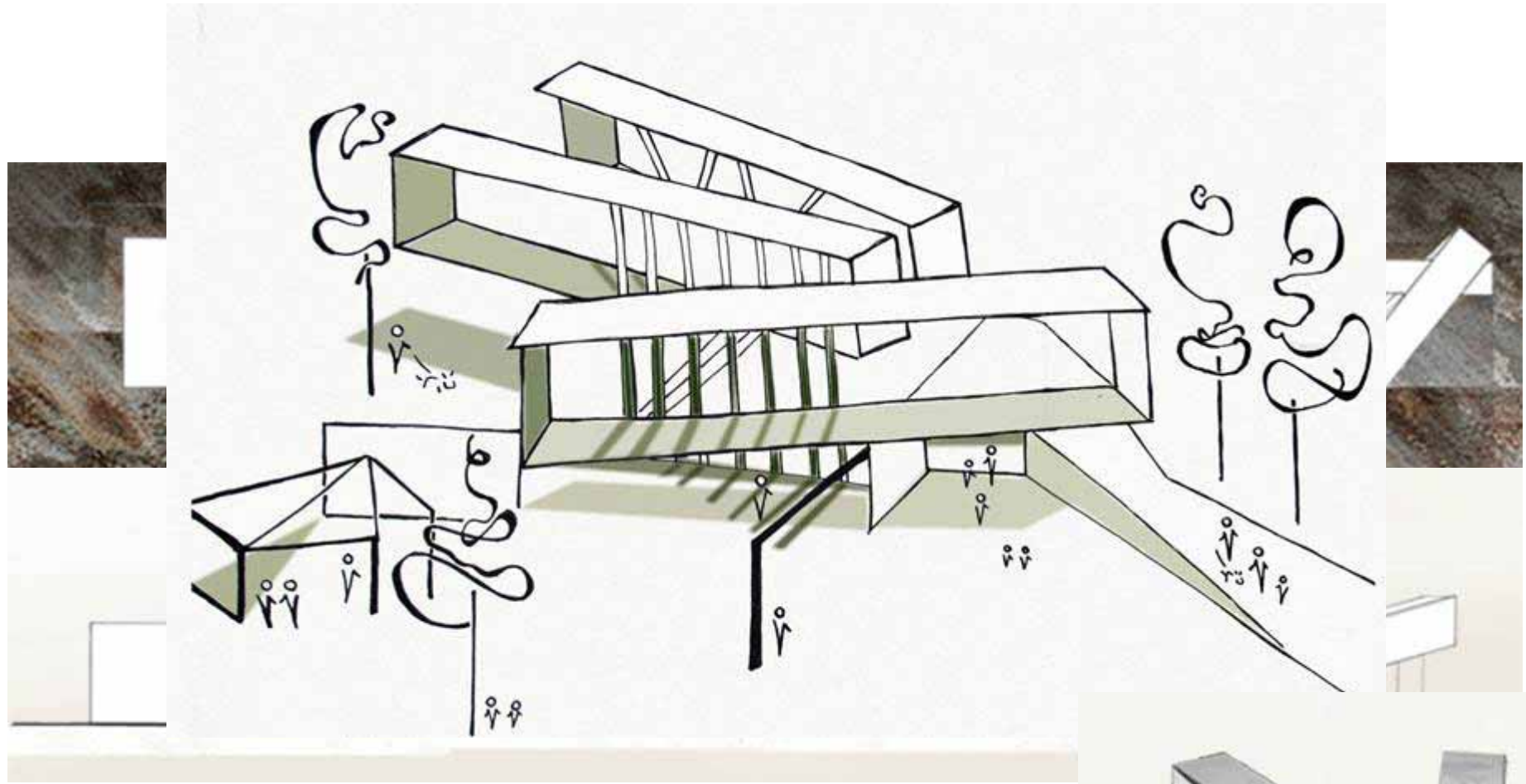


THE OFFICE IN THE FOREST



Breaking the boundaries between
the work place and the external
environment

THE OFFICE IN THE FOREST



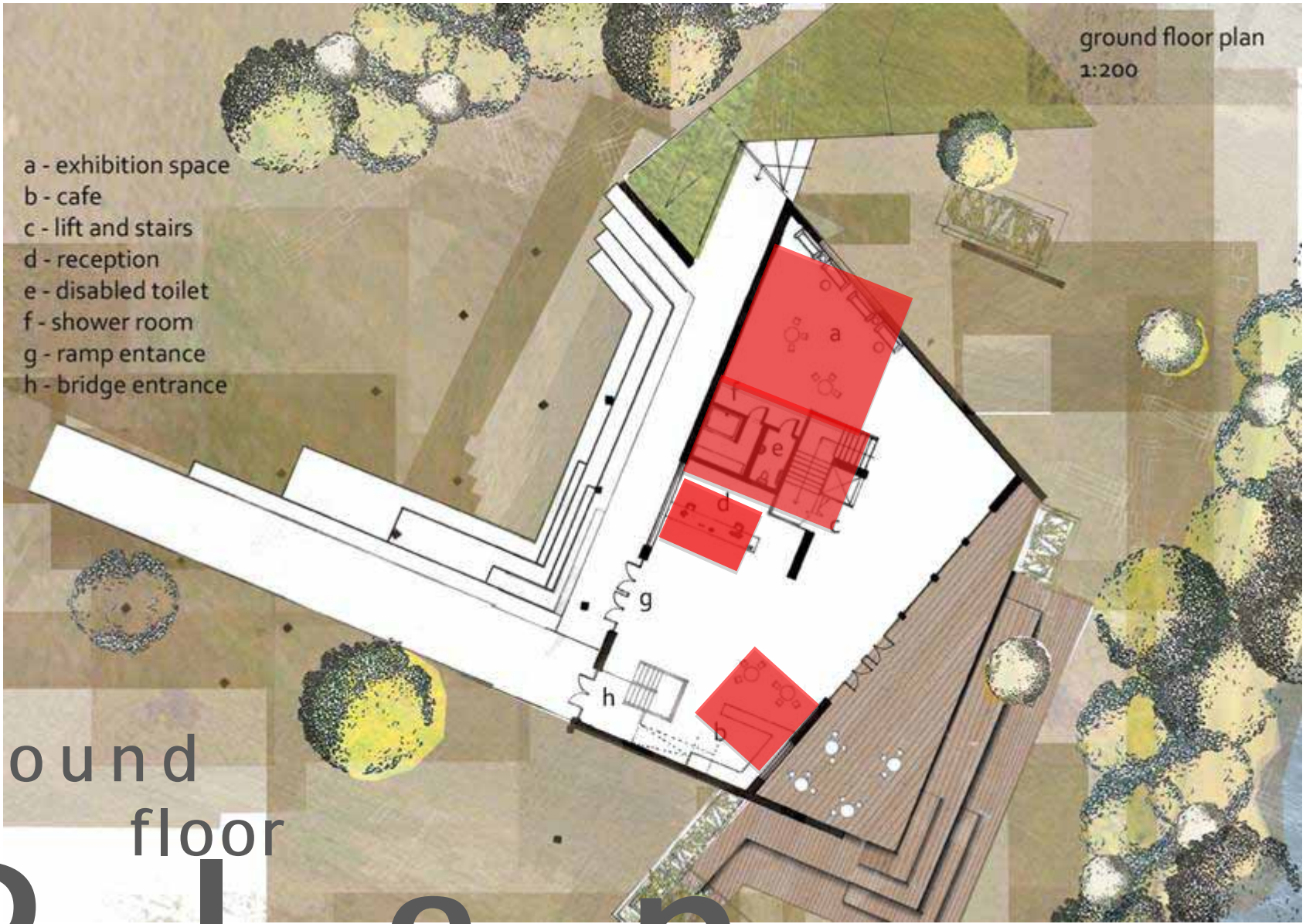
c o n c e p t



THE OFFICE IN THE FOREST



THE OFFICE IN THE FOREST



ground floor plan
1:200

- a - exhibition space
- b - cafe
- c - lift and stairs
- d - reception
- e - disabled toilet
- f - shower room
- g - ramp entrance
- h - bridge entrance

ground
floor
Plan

THE OFFICE IN THE FOREST



double height entrance space

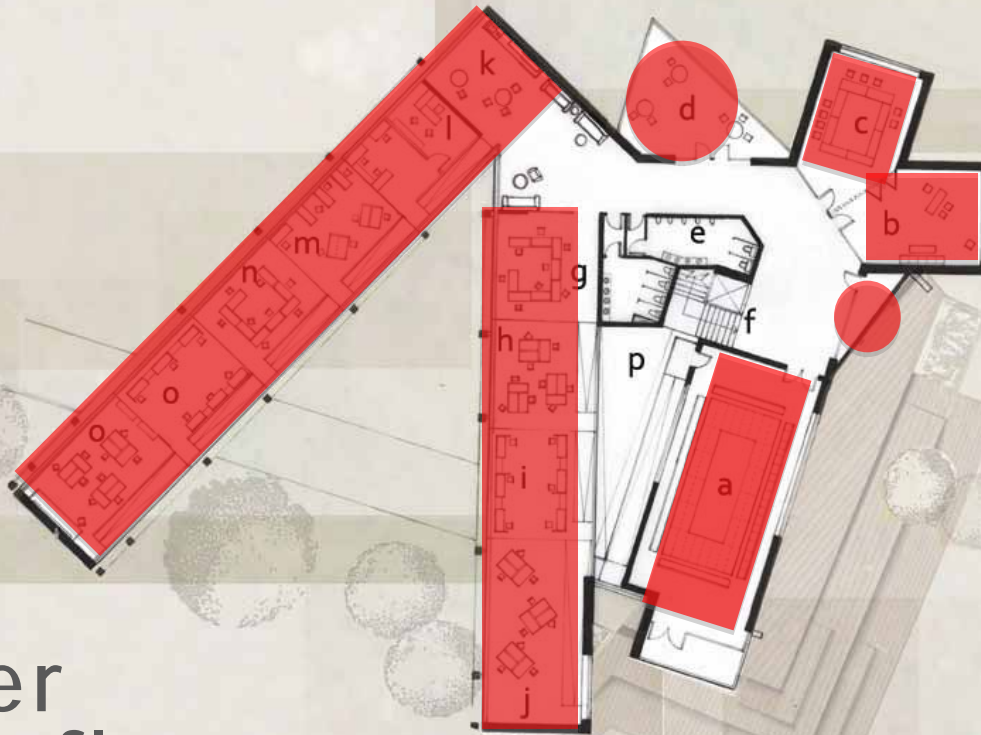


THE OFFICE IN THE FOREST

upper floor plan

1:200

\



- a - 50 person meeting room
- b - 25 person meeting room
- c - 25 person meeting room
- d - outdoor breakout space
- e - male & female toilets
- f - stairs & lift
- g - ICT & printing
- h - sales
- i - marketing
- j - customer services
- k - breakout space & kitchen
- l - managers office
- m - book keeping
- n - purchasing
- o - product design
- p - double high space

upper
floor

P l a n

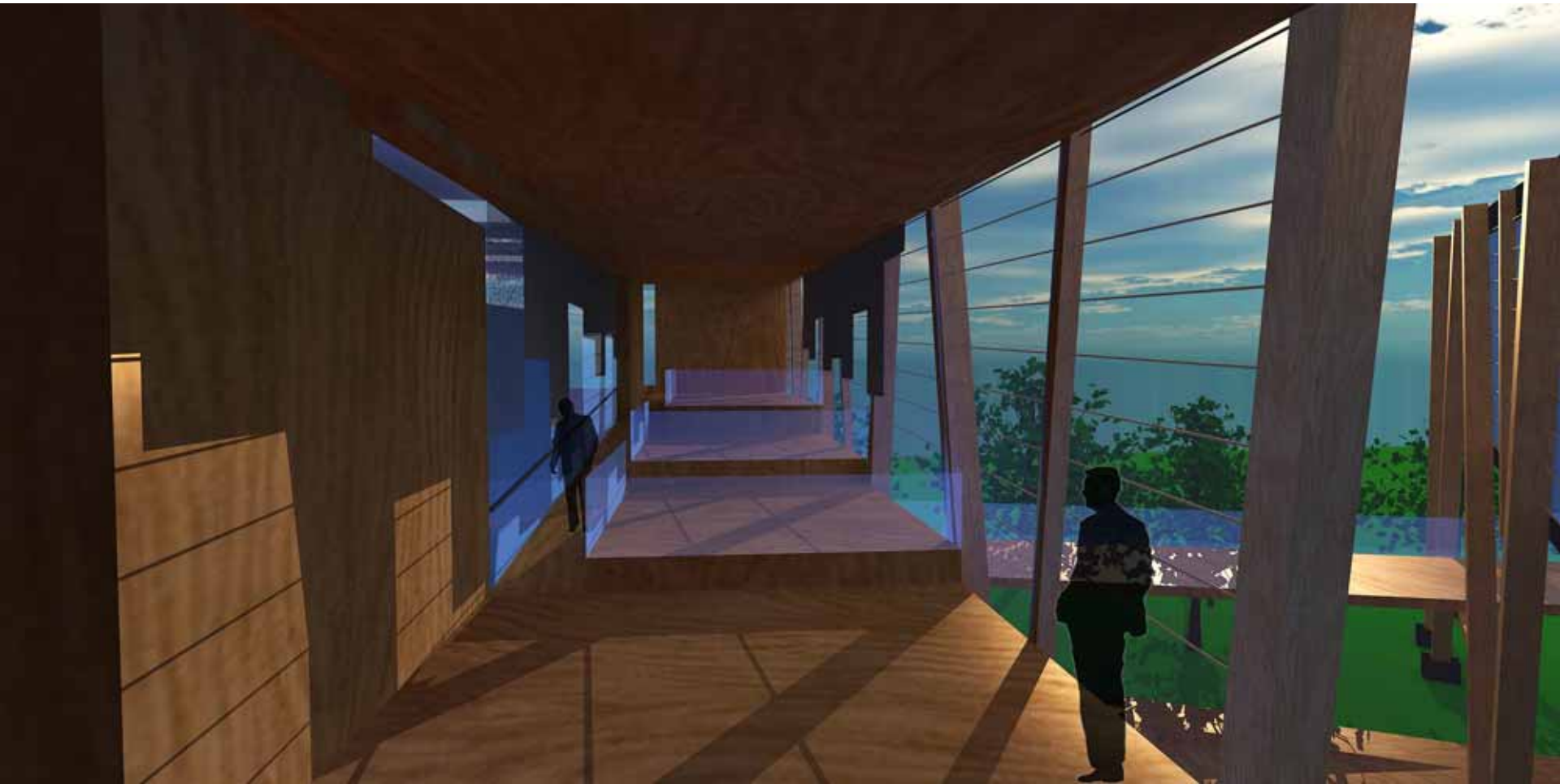
THE OFFICE IN THE FOREST



THE OFFICE IN THE FOREST



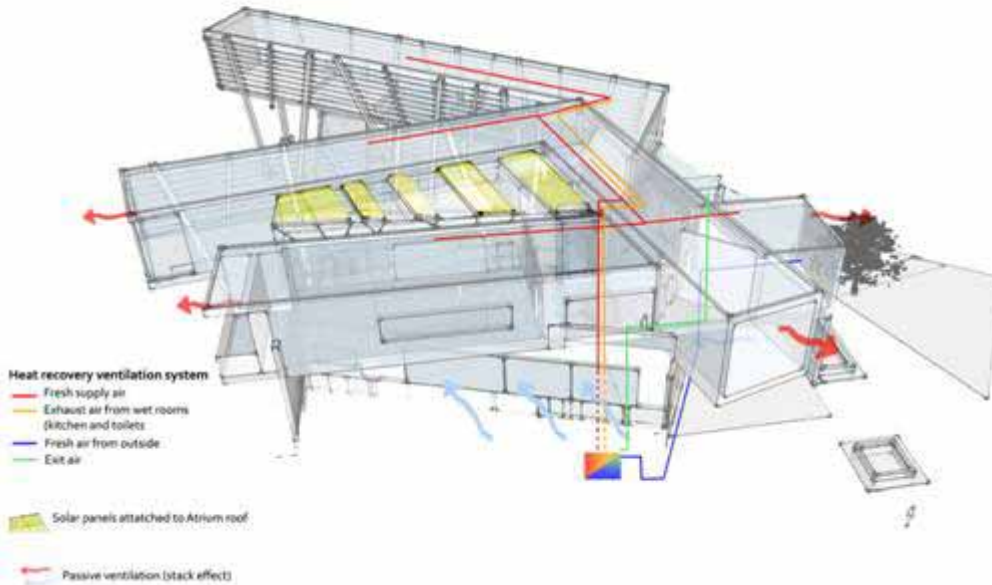
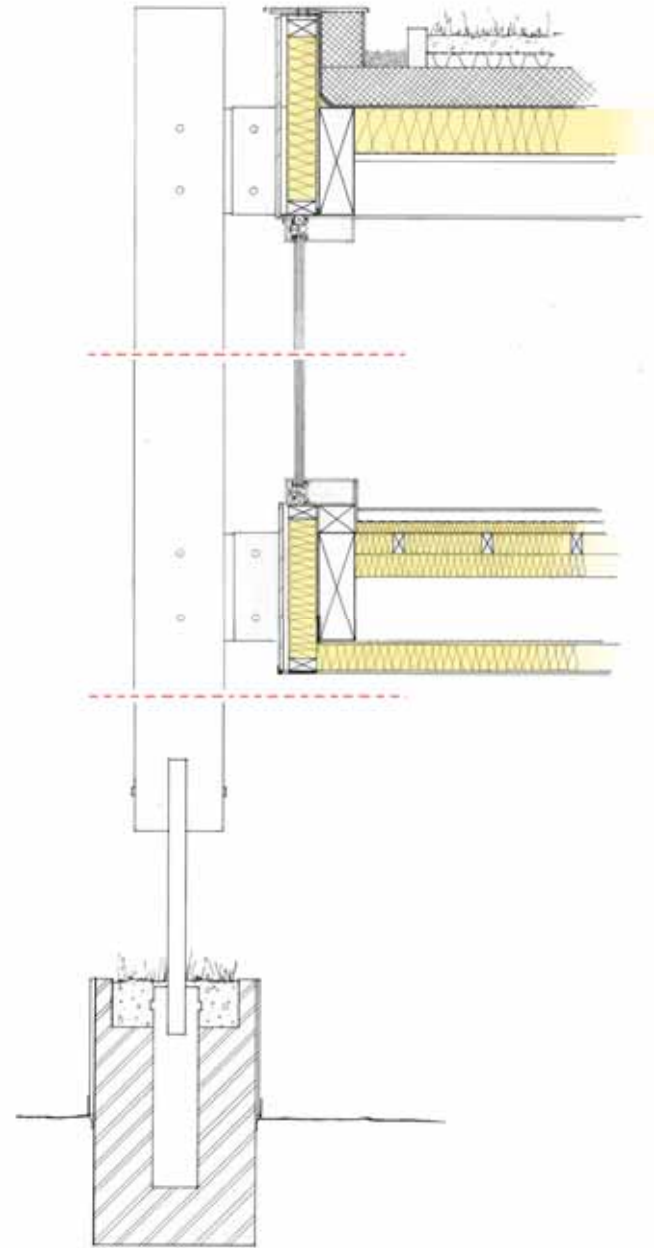
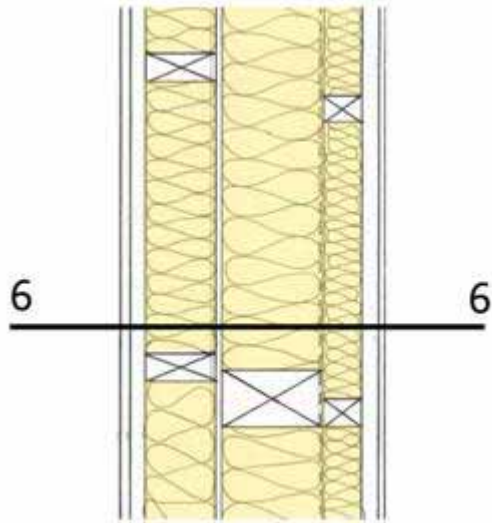
THE OFFICE IN THE FOREST



THE OFFICE IN THE FOREST



THE OFFICE IN THE FOREST



THE OFFICE IN THE FOREST



THE OFFICE IN THE FOREST

