

EDUCATION HYBRID



BC. PATRIK DOMANICKÝ
HEAD DESIGNER
SLOVAK UNIVERSITY OF TECHNOLOGY



BC. ZUZANA MIHAĽOVÁ
POST-PRODUCTION SUPPORT
SLOVAK UNIVERSITY OF TECHNOLOGY



ING. ARCH. KATARÍNA FEJO, PHD
TUTOR

ING. ARCH. TOMÁŠ HANÁČEK, PHD
TUTOR

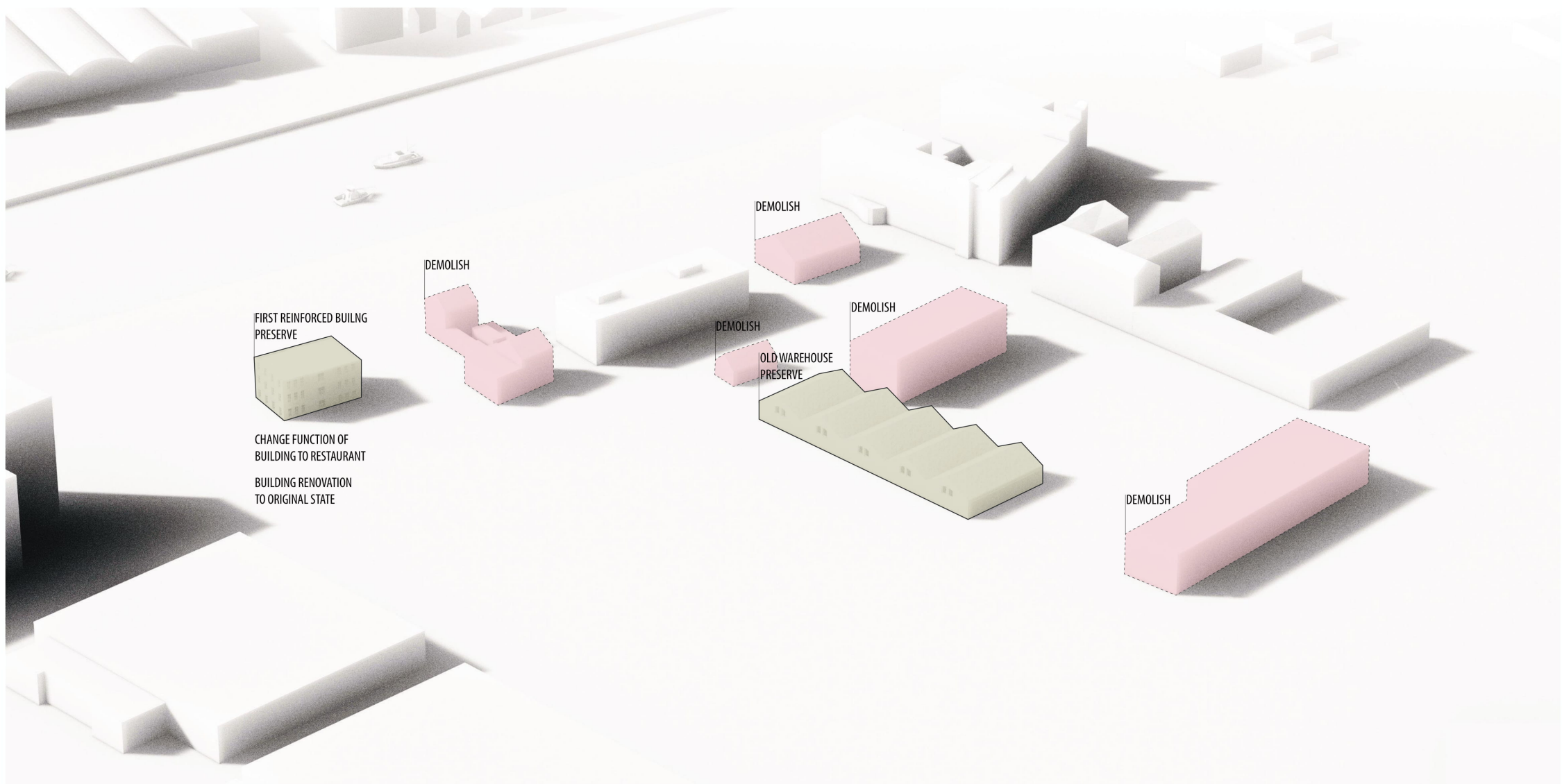
SLOVAK UNIVERSITY OF TECHNOLOGY



PRESENTATION TEAM: 12 SLOVAKIA



CONCEPT: THEATER PLAY CALLED "LIFE"



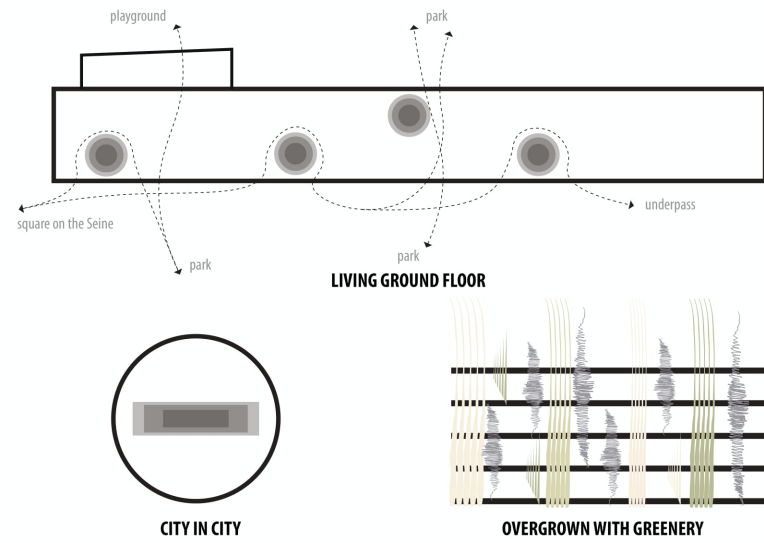
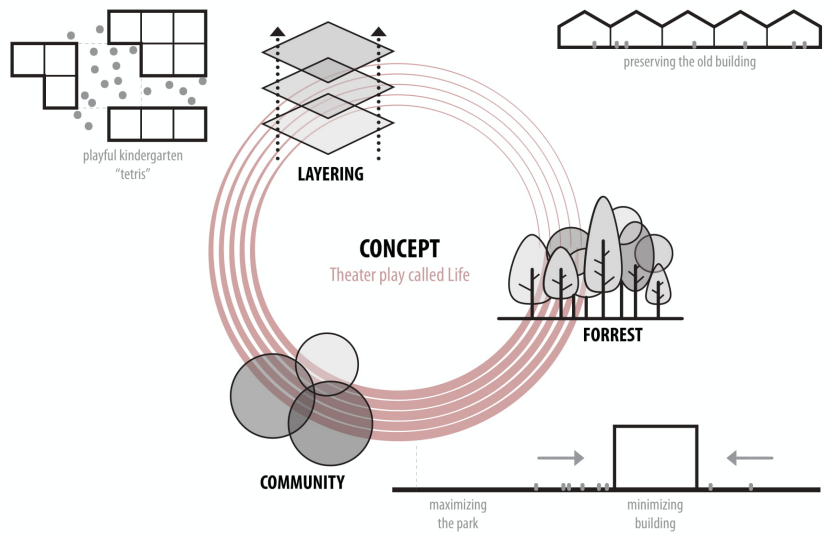
OLD SITUATION



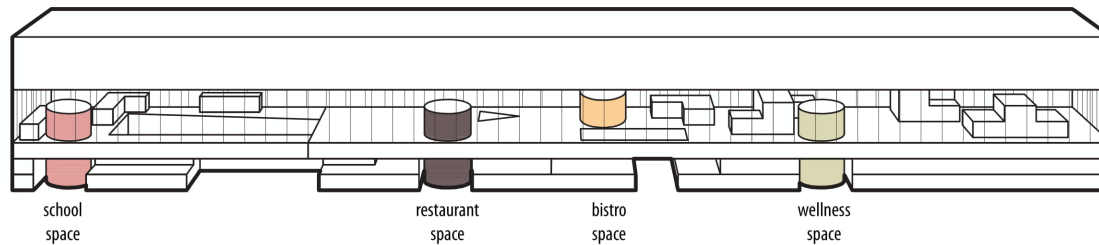
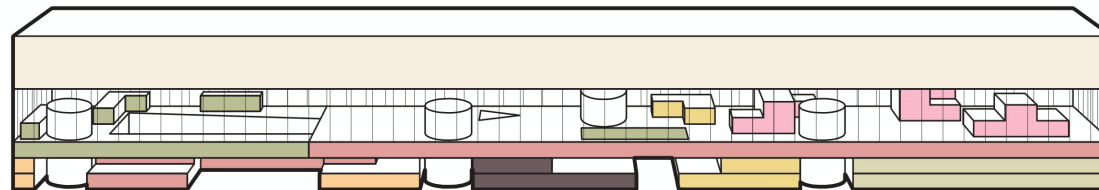
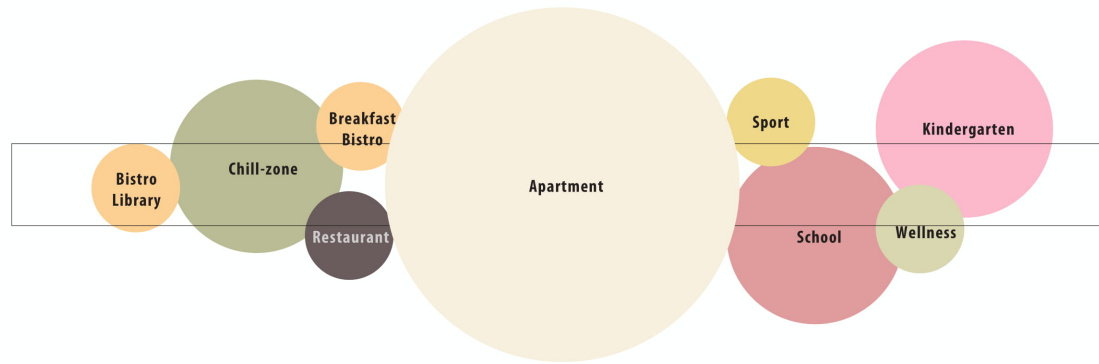
APPROACH TO OLD WAREHOUSE BUILDING



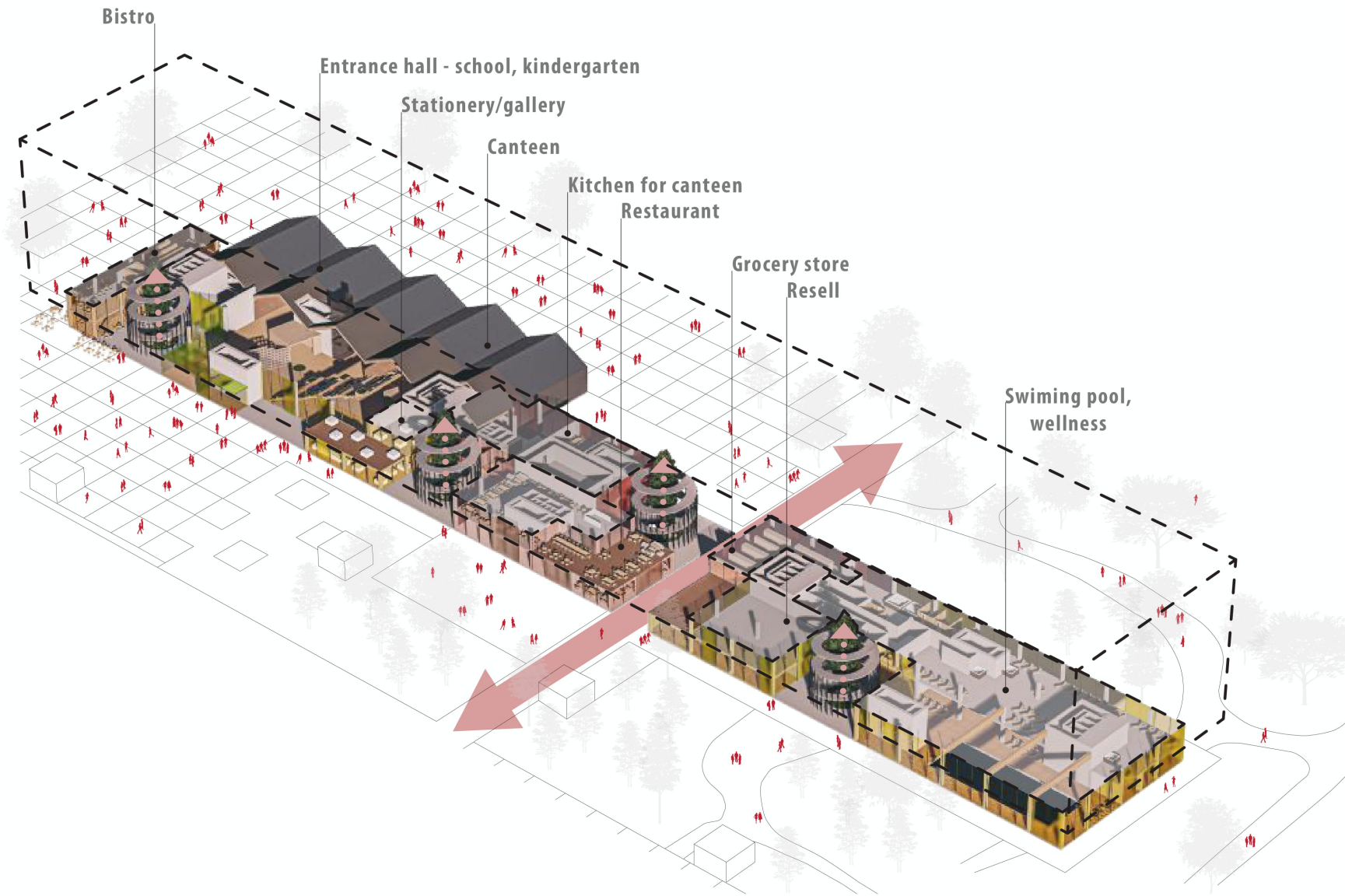
INTEGRATION OF THE OLD WAREHOUSE BUILDING



MAIN ARCHITECTURAL CONCEPT



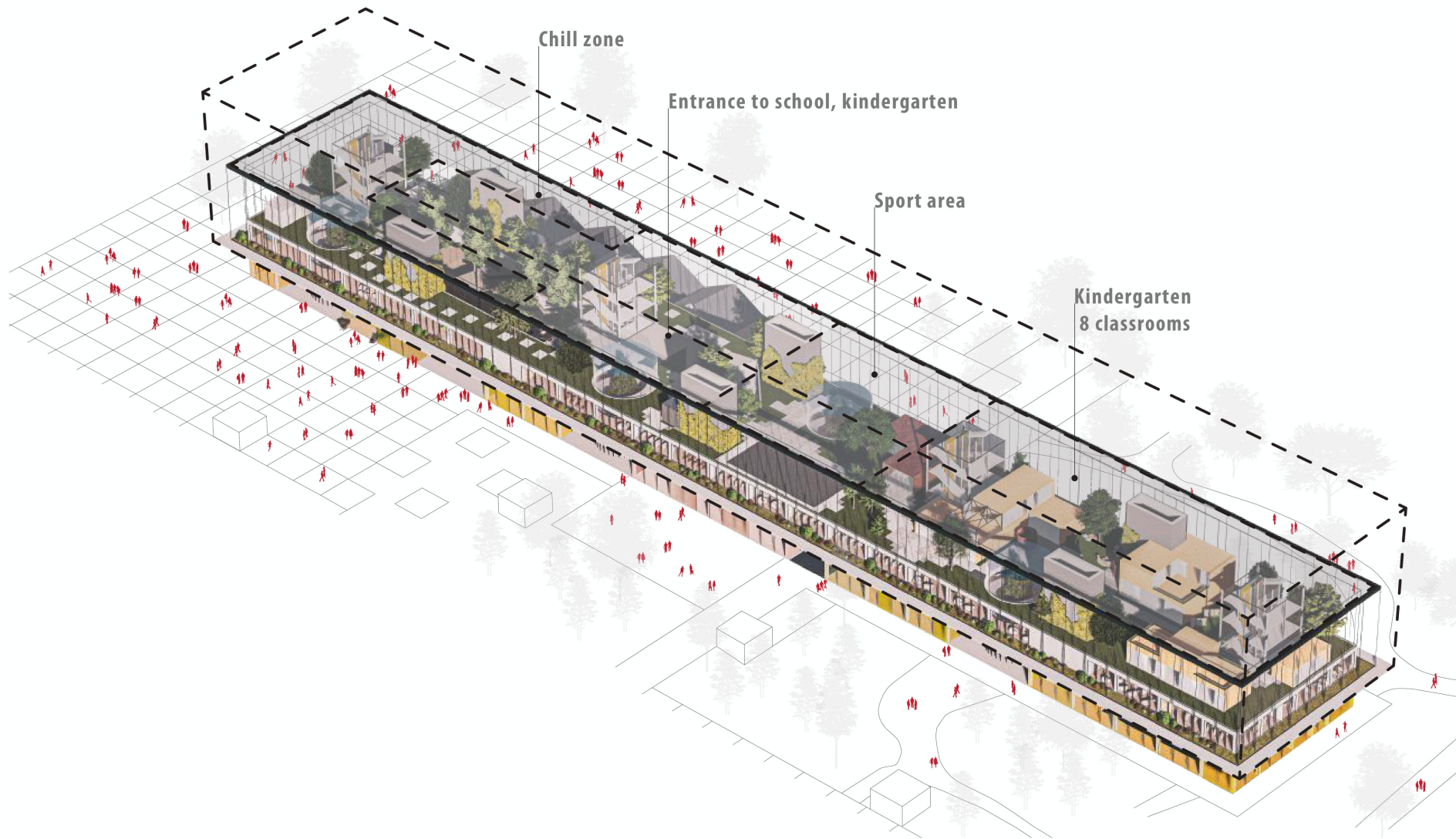
PROGRAM AXONOMETRY



AXONOMETRY OF GROUND FLOOR



GROUND FLOOR VIEW



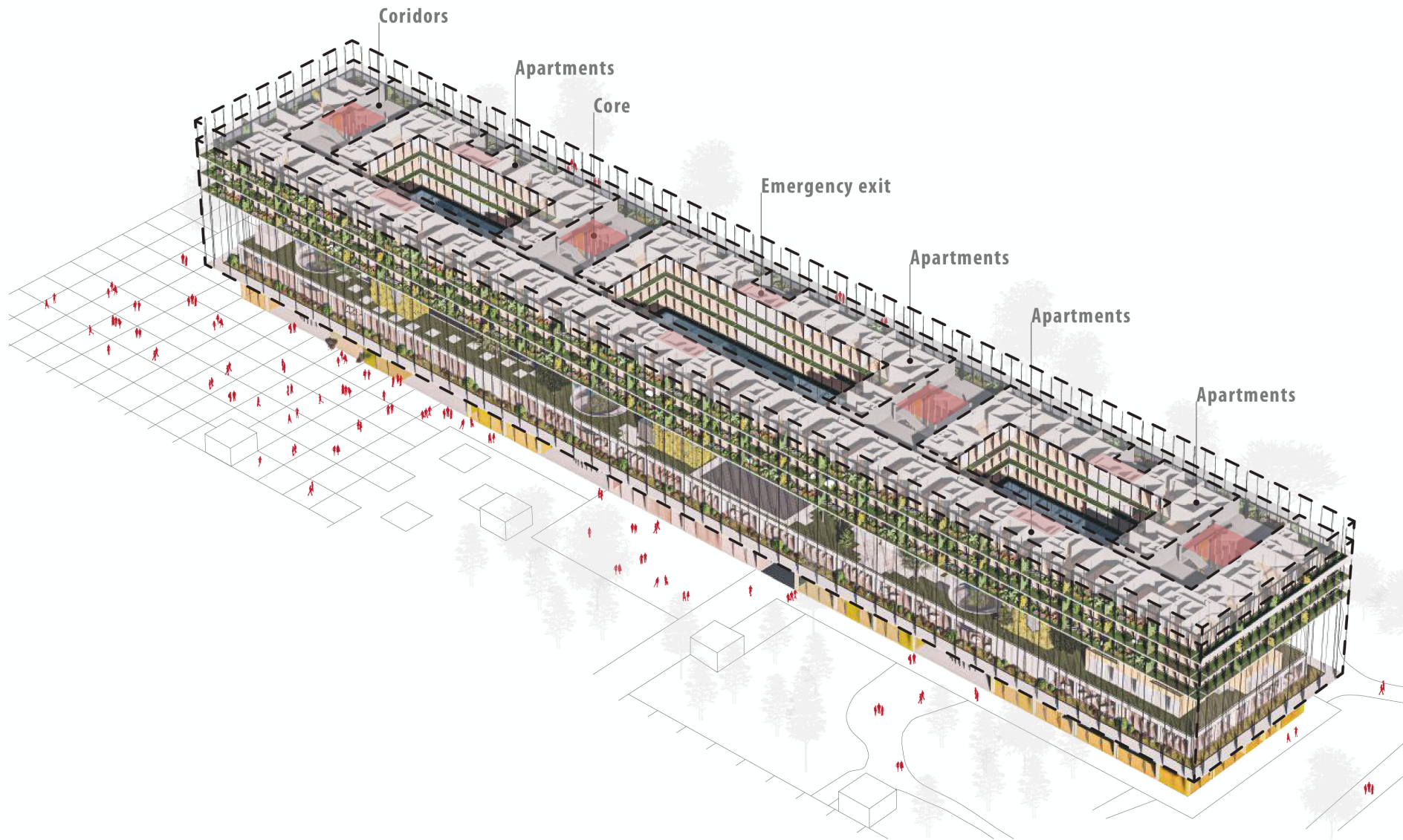
AXONOMETRY OF INDOOR PUBLIC SPACE



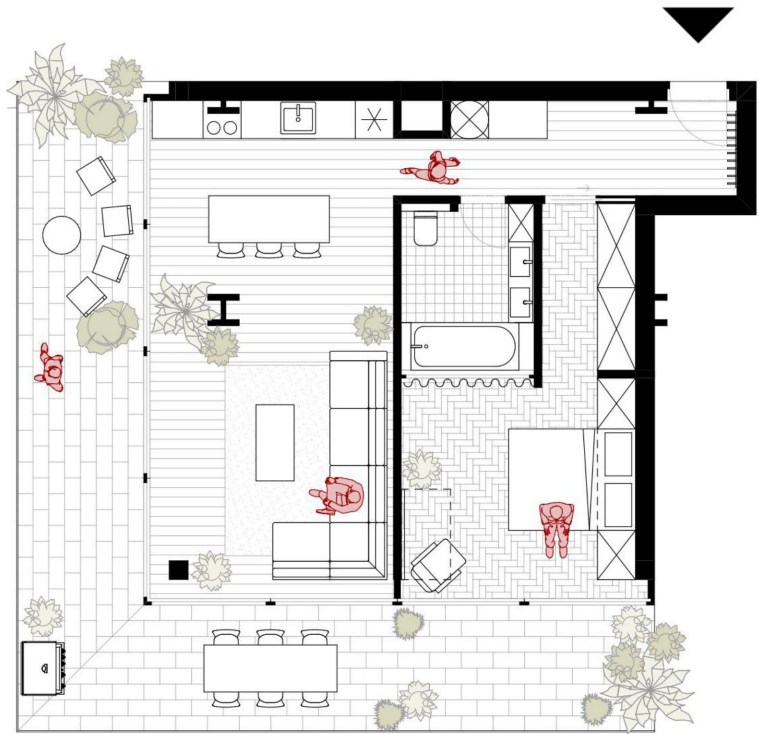
KINDERGARTEN



MAIN ENTRANCE TO SCHOOL AND KINDERGARTEN



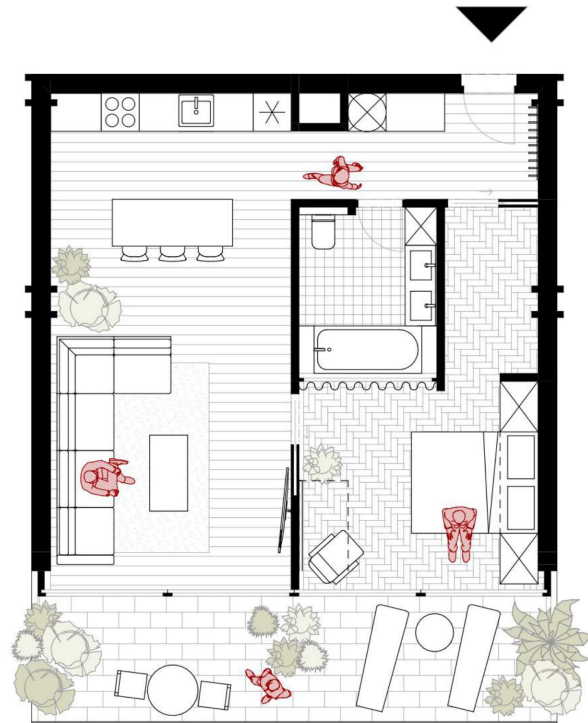
AXONOMETRY OF APARTMENTS



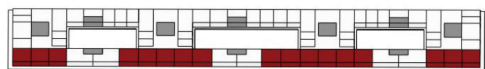
64,8 m² + 32m² BALLCONY



8 UNITS



56,5 m² + 8m² BALLCONY



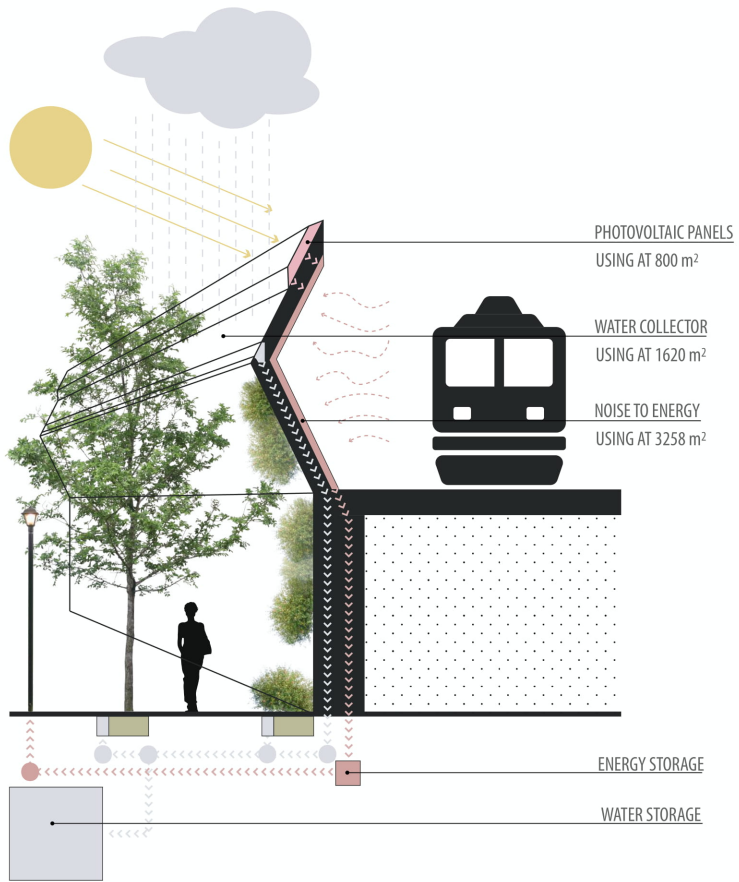
16 UNITS



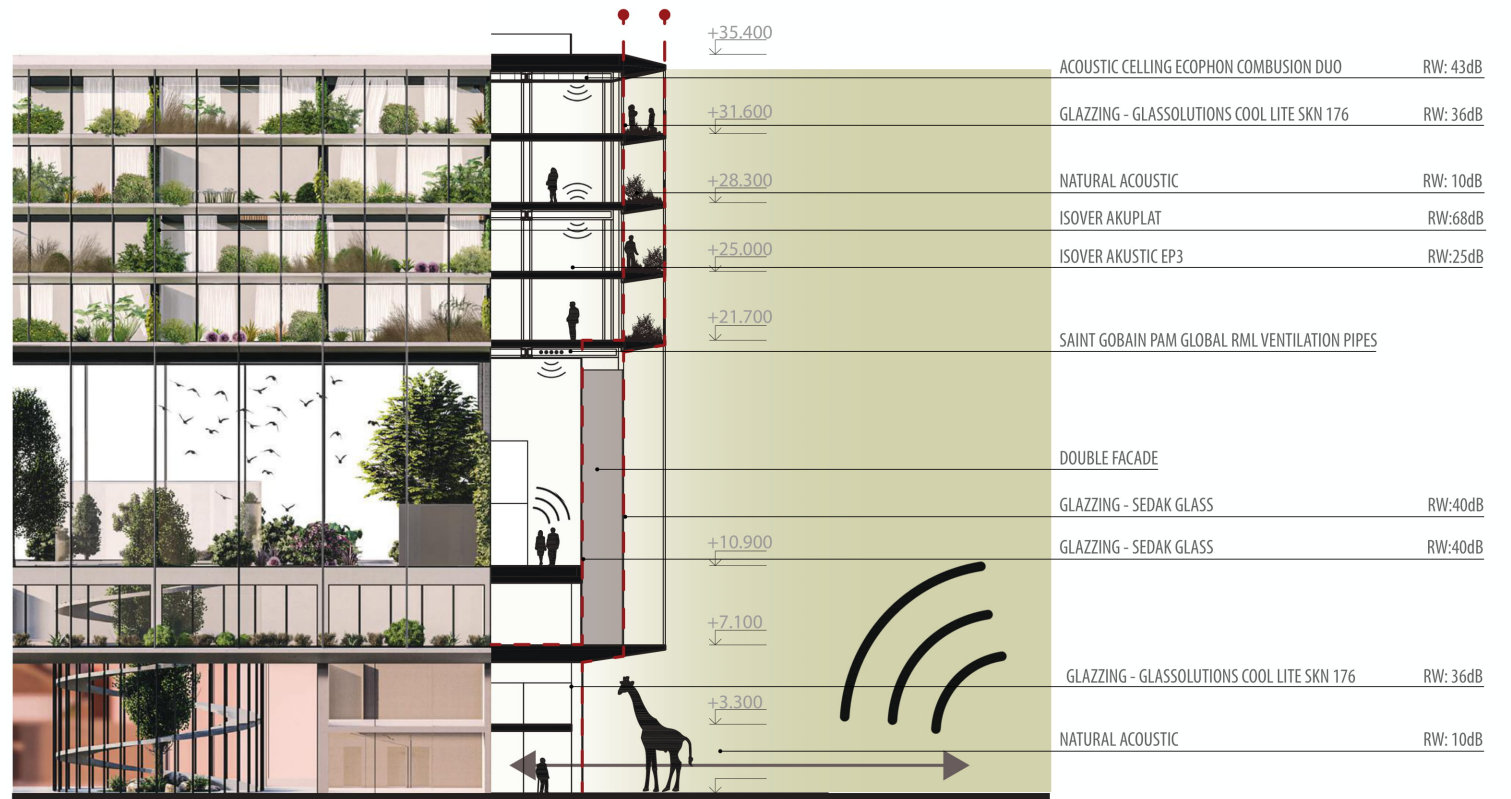
64,8 m² + 16m² BALLCONY



60 UNITS

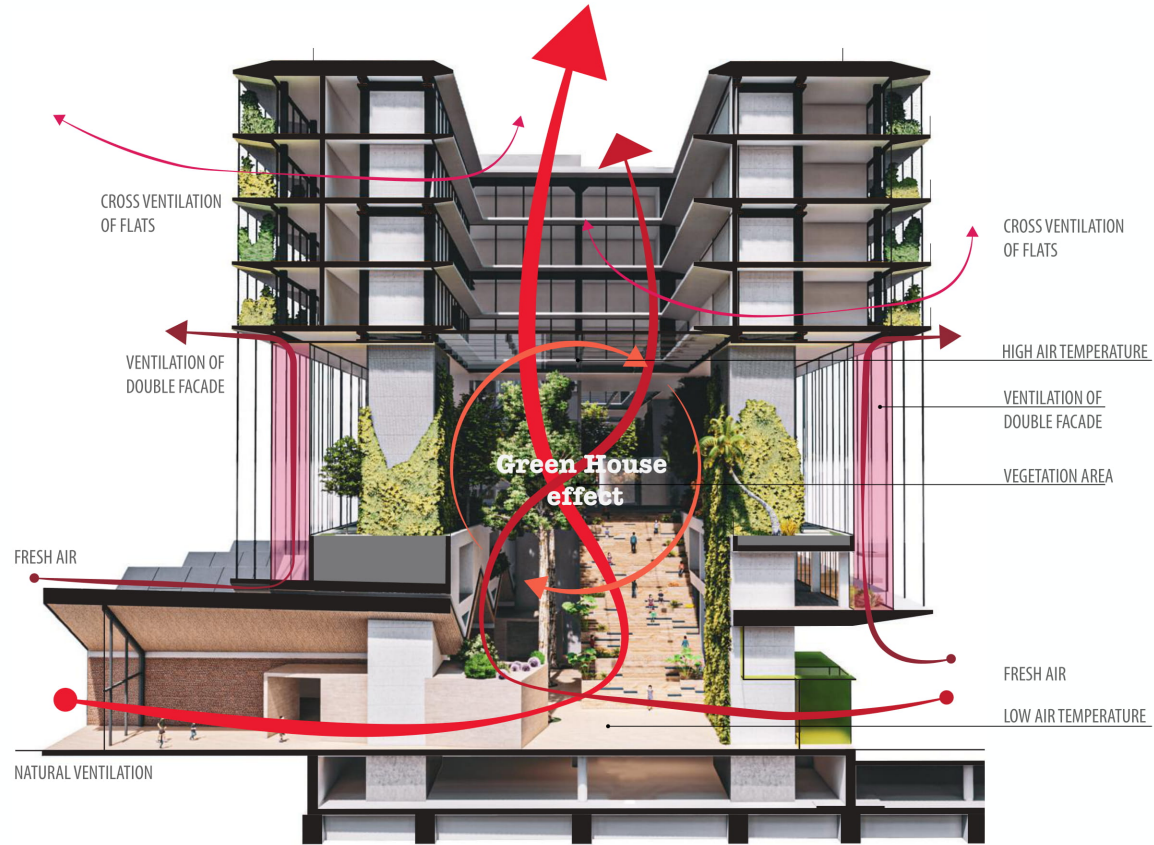


ACOUSTIC TRAIN BARRIER

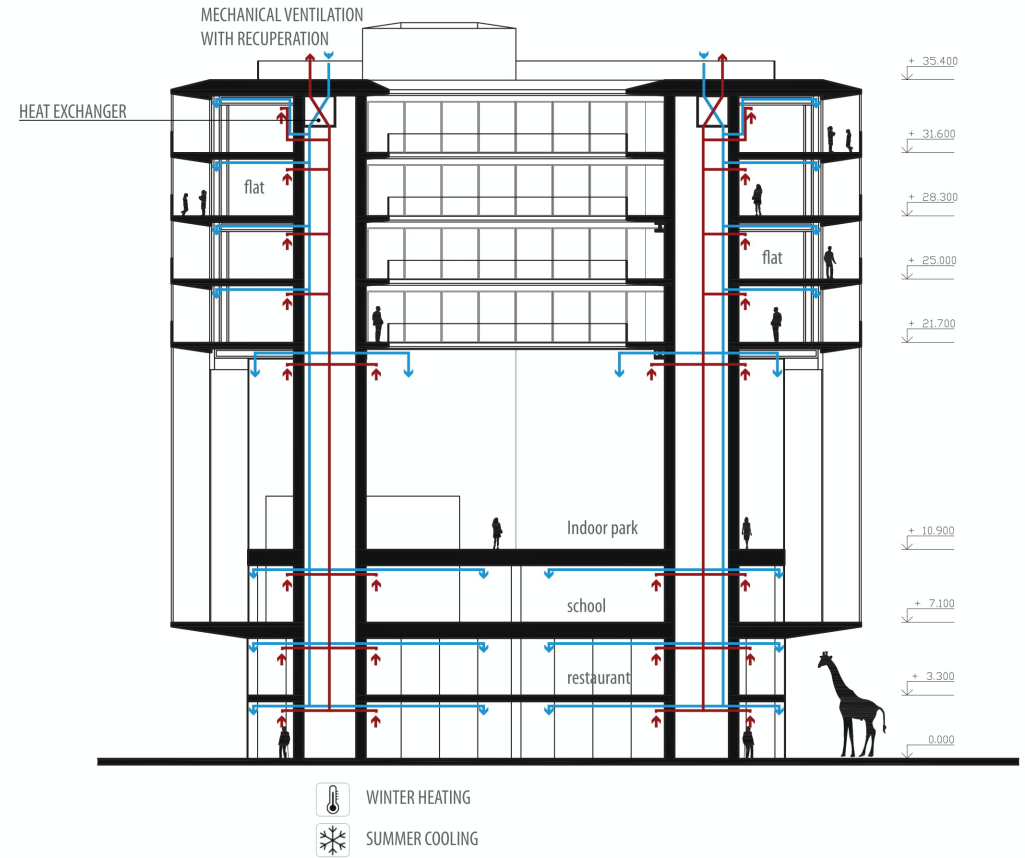


ACOUSTIC FACADE PROTECTION

ACOUSTIC COMFORT



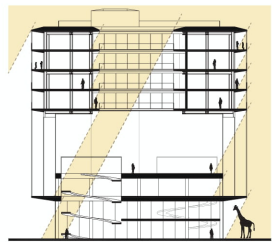
NATURAL VENTILATION SYSTEM



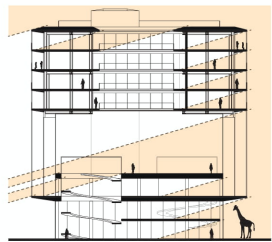
VENTILATION SYSTEM WITH HEAT RECOVERY

WORKING TOGETHER

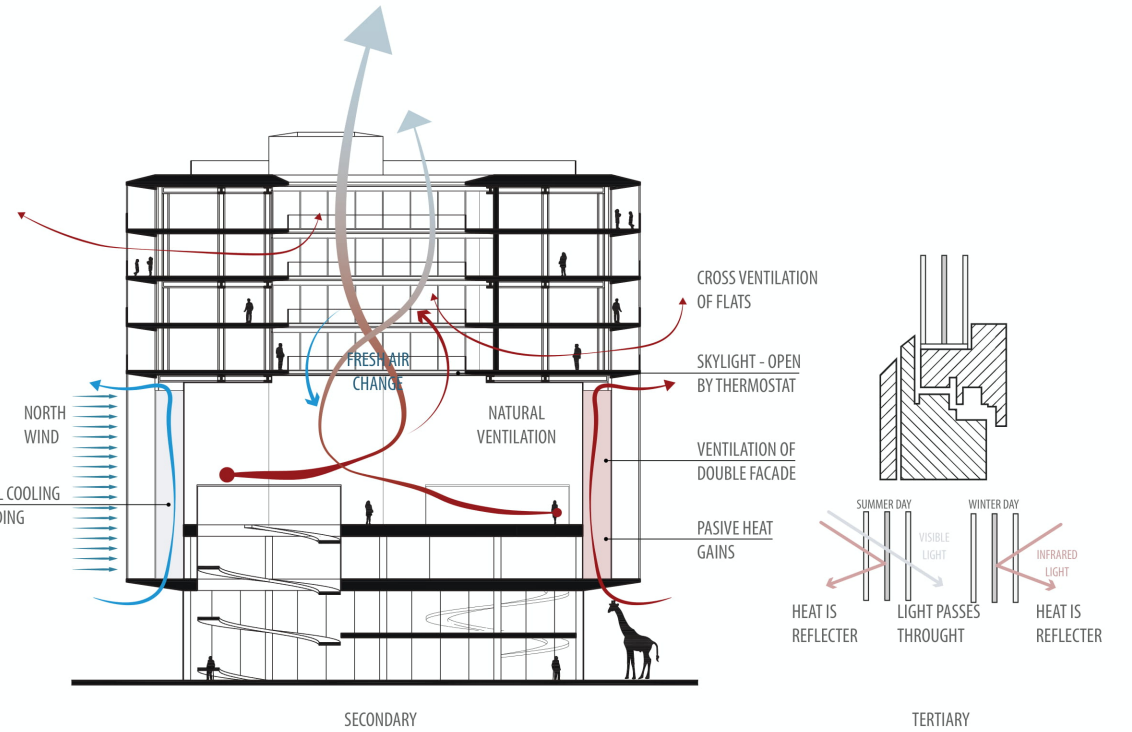
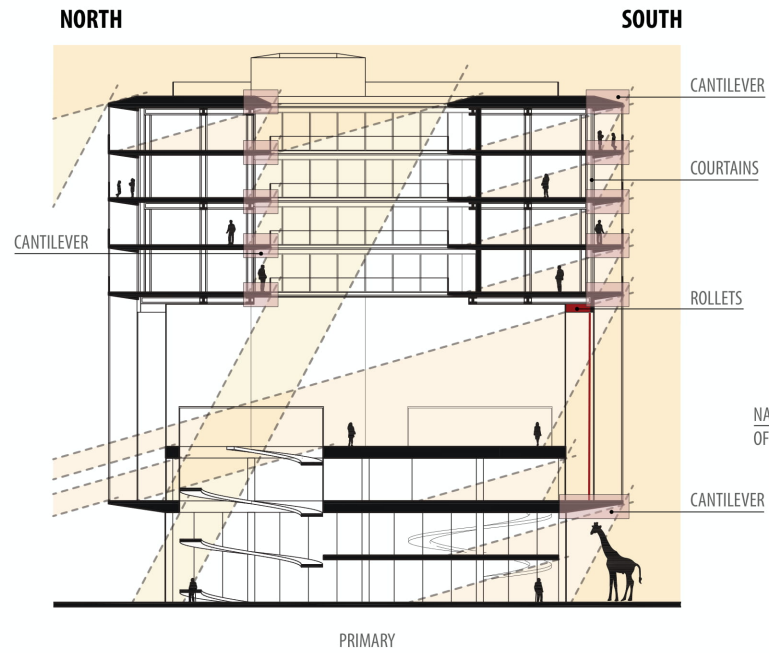
INDOOR AIR COMFORT



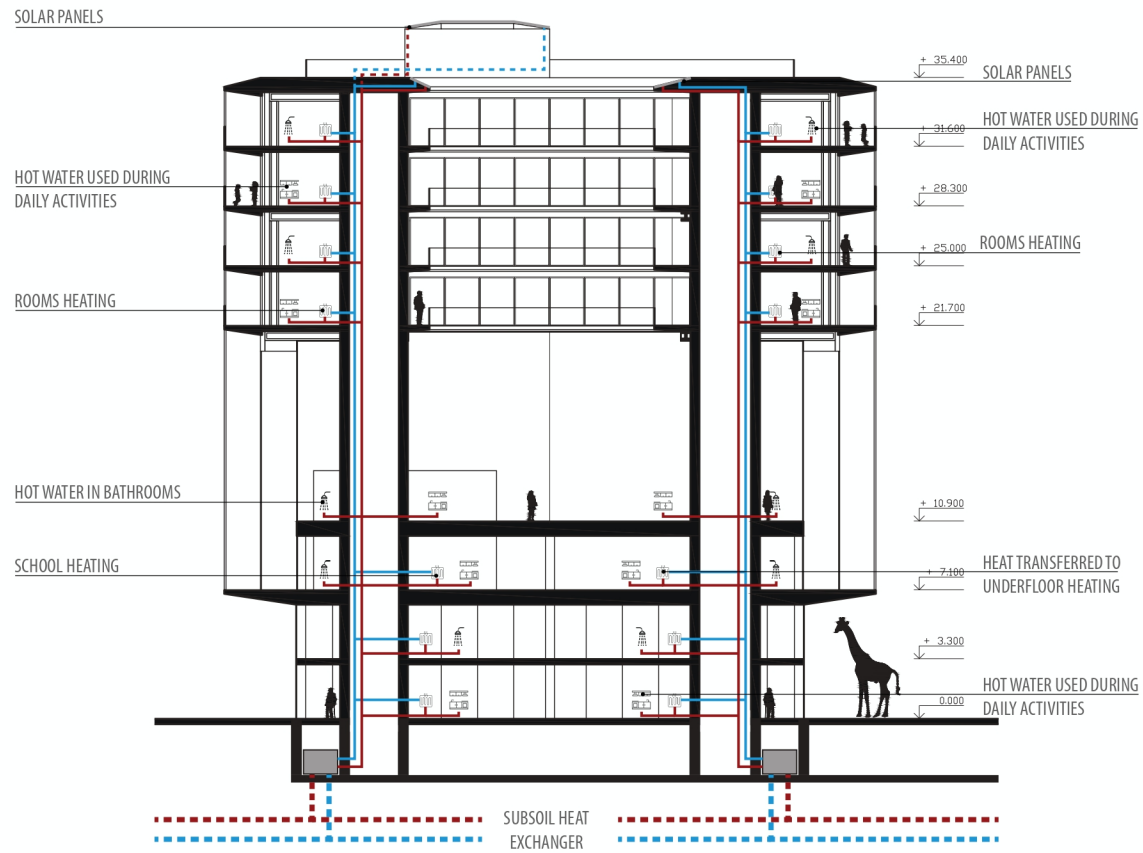
SUMMER TIME 62,64°



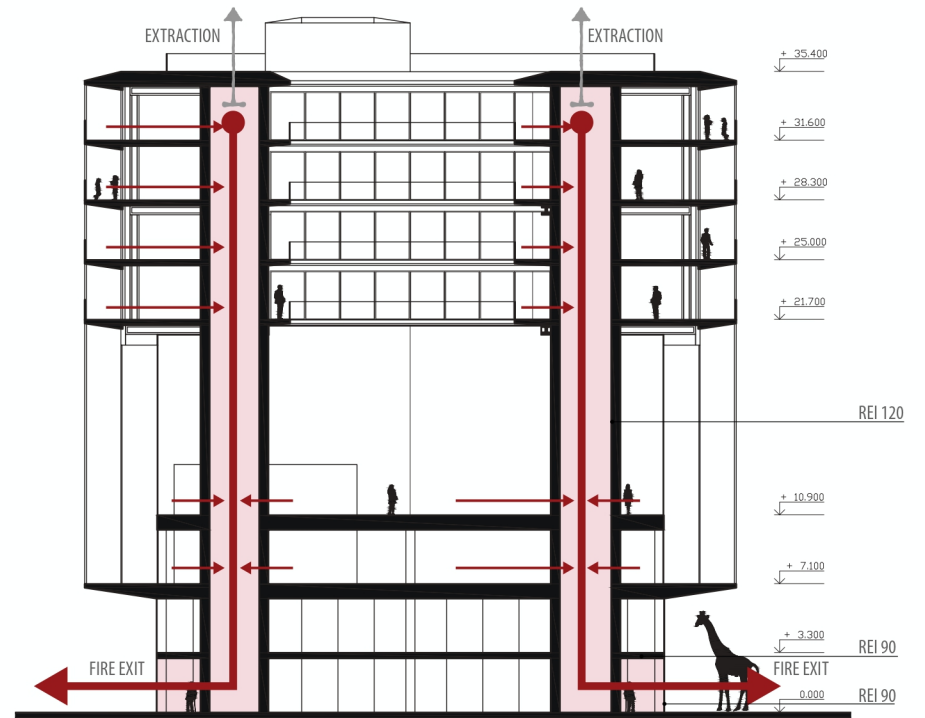
WINTER TIME 16,96°



THERMAL COMFORT



HEATING SYSTEM



FIRE SAFETY

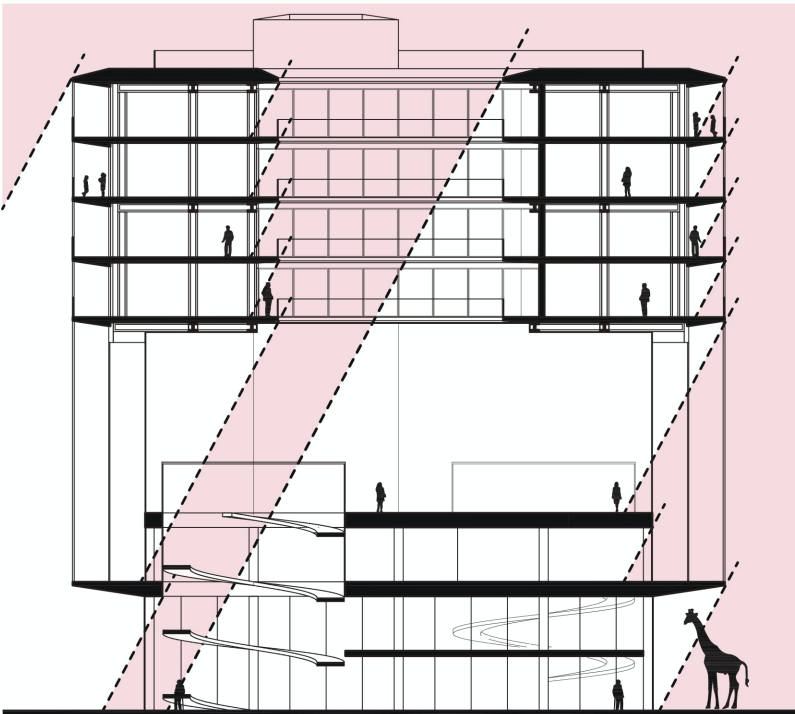
HEATING SYSTEM AND FIRE SAFETY



INTEGRATION OF THE TECHNOLOGIES

NORTH

SOUTH



SCHEME OF ILLUMINATION

SUFFICIENT QUALITY AND QUANTITY OF LIGHT

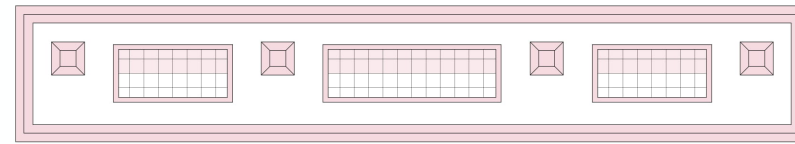
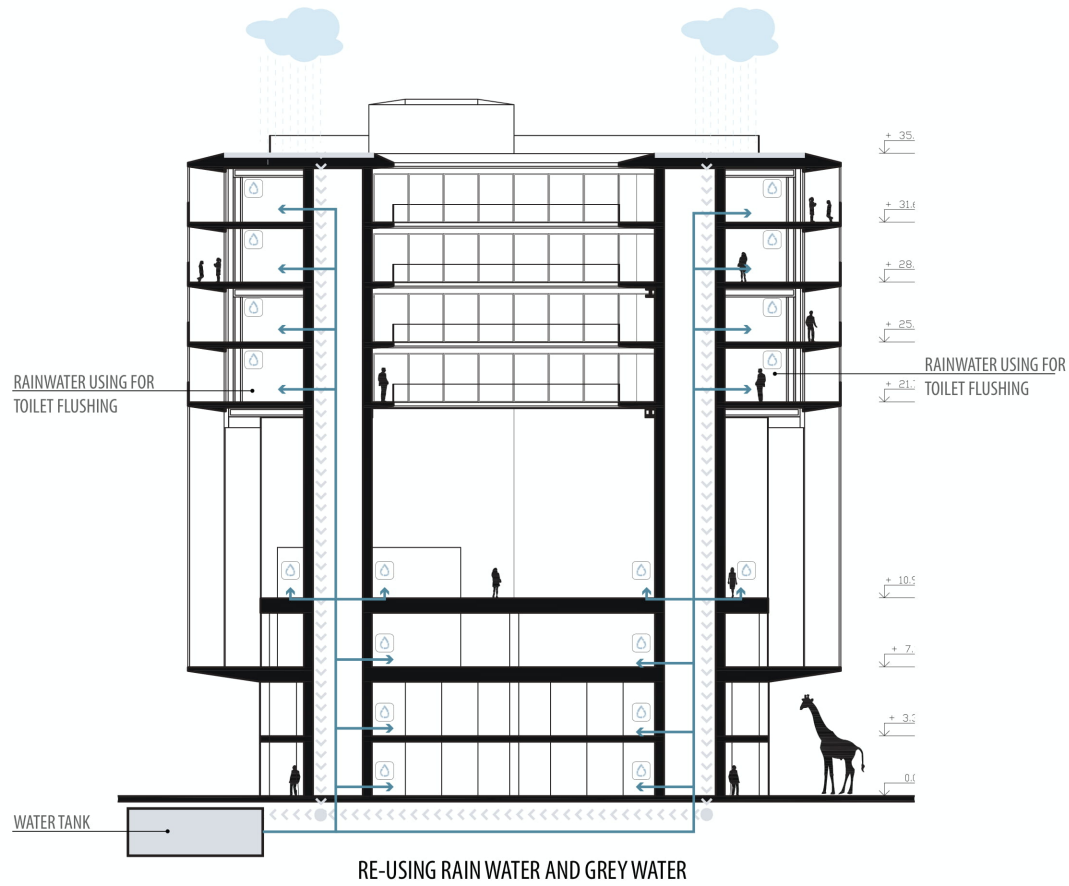
HEATED GLASS - PROTECTION FROM SNOW

INTERESTING VIEW FROM EVERY PART OF BUILDING



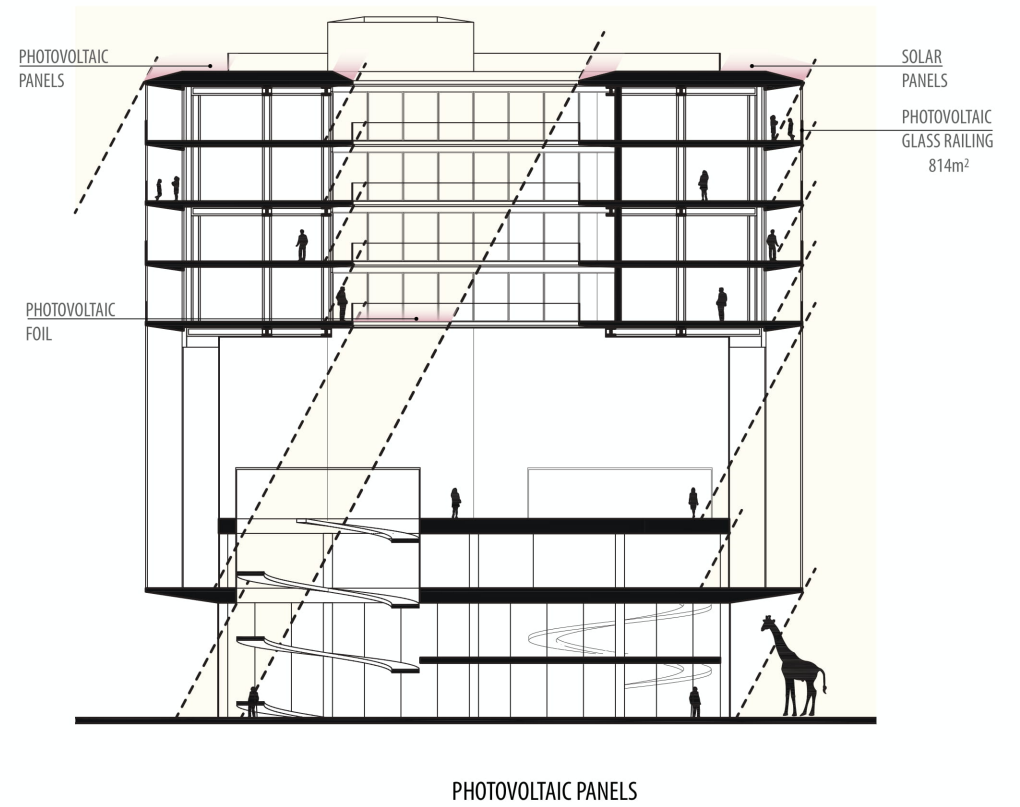
SCHEME OF VIEWS FROM OBJECT

VISUAL COMFORT

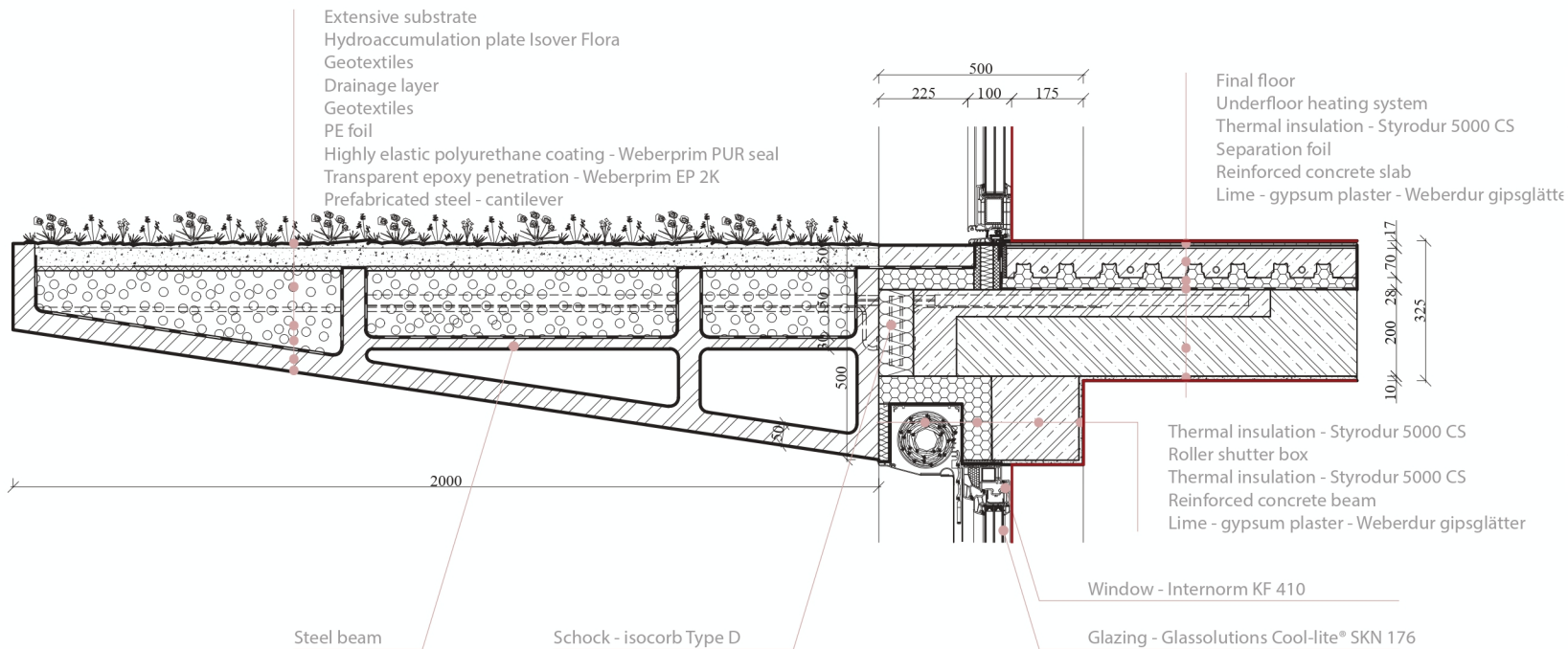


PHOTOVOLTAIC PANELS
2341m²

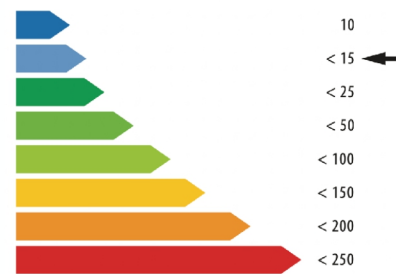
SOLAR PANELS
628m²



USING OF NATURAL RESOURCES AND RE-USE RAINWATER

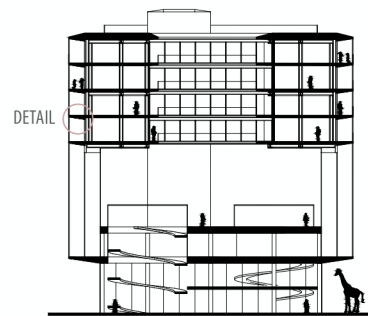


DETAIL OF BALCONY



Specific heat demand	
Transmission heat losses:	314008,36 kWh/a
Ventilation heat losses:	409836,98 kWh/a
Total heat losses:	723845,34 kWh/a
Internal heat gains:	204489,24 kWh/a
Solar heat gains:	368681,74 kWh/a
Total heat gains:	523877,33 kWh/a
Annual heat demand:	199968,01 kWh/a
Specific heat demand:	13,08 kWh/(m2a)

CALCULATIONS



SCHEME OF DETAILS

DETAIL OF BALCONY

Manufacturer: Saint-Gobain Construction Products CZ, division ISOVER, Smečková 2485/4, 180 00 Praha 8, Česká republika

Manufacturer represented: Castolovice, Masarykova 197, 517 50, Czech Republic

About company: International company, enterprising in 64 countries, part of Saint-Gobain group, more than 130 000 employees. Subject of enterprise of Isover division is to produce and sell thermal insulation from mineral wool, expanded and extruded polystyrene, their accessories and providing technical support for marketed solutions.

EPD Programme: The International EPD® System

Registration no: 3015-EPD-030058632

Generic PCR review conducted by: Environdec, EPD International Ltd., Box 210 60, SE-00 31 Stockholm, Sweden

Other used standards: Saint-Gobain Methodological Guide for Construction Products 2012

Information for the Environmental Product Declaration based on: General report on isover I CA Castolovice, Paris, France: Isover, 2015

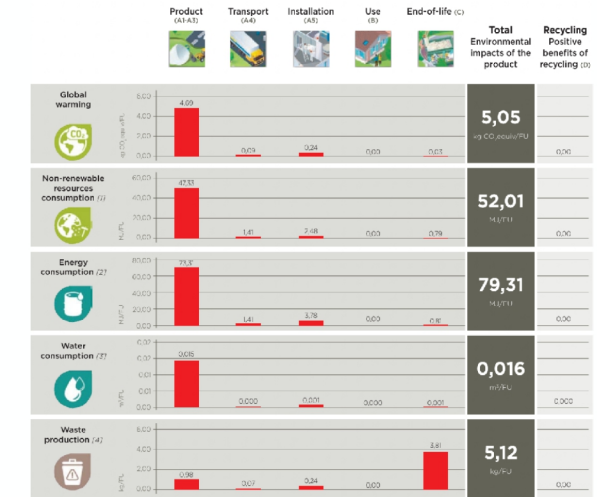
EPD range: „From cradle to gate with option“ (details later in EPD)

Date of publication: 9th may 2019

EPD validity: 9th may 2024

Compiler EPD: Ing. arch. Josef Hložmann, Division ISOVER, Saint-Gobain Construction Products CZ a.s.

Verifier EPD: Technický a zkušební ústav stavební Praha, s.p. - pobočka Plzeň



[1] This indicator corresponds to the global depletion equivalent of fossil resources
 [2] This indicator corresponds to the total use of primary energy
 [3] This indicator corresponds to the use of net fresh water
 [4] This indicator corresponds to the sum of hazardous, non-hazardous and radioactive waste disposed

ENVIRONMENTAL PRODUCT DECLARATION - ISOVER FLORA



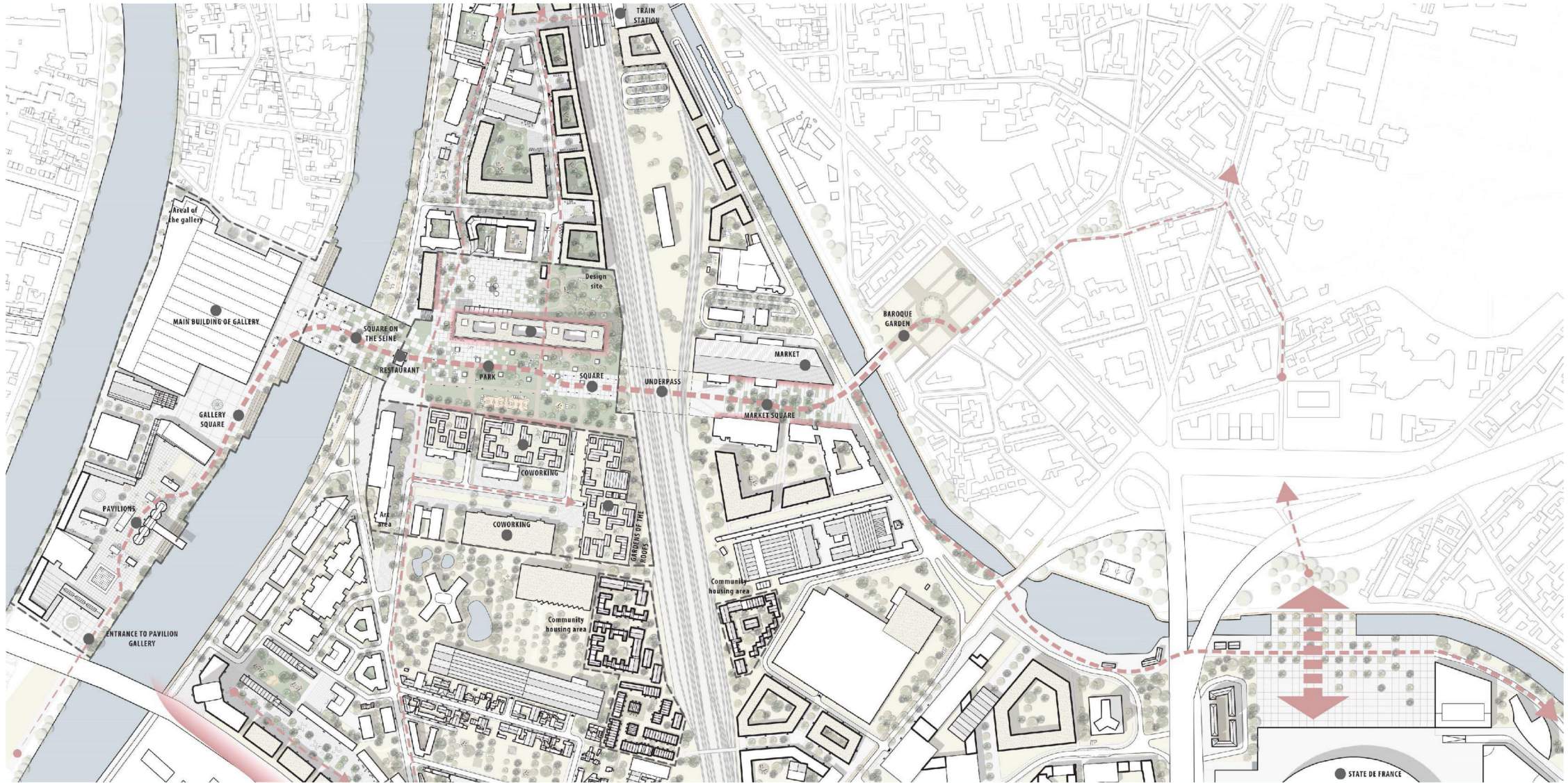
OLYMPIC GAMES 2024



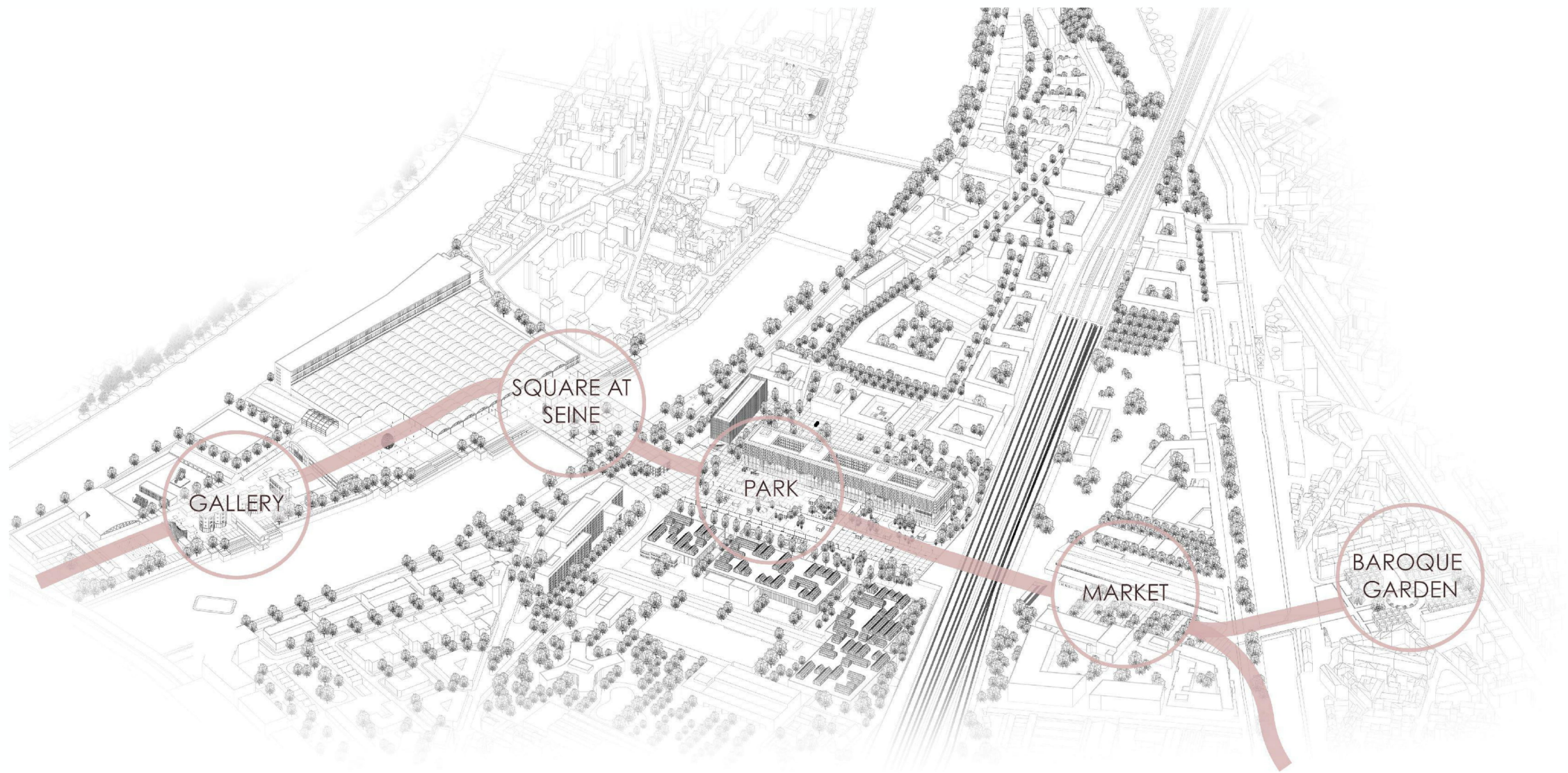
REINVENTER PARIS



PARISIAN BACK TO THE HOOD



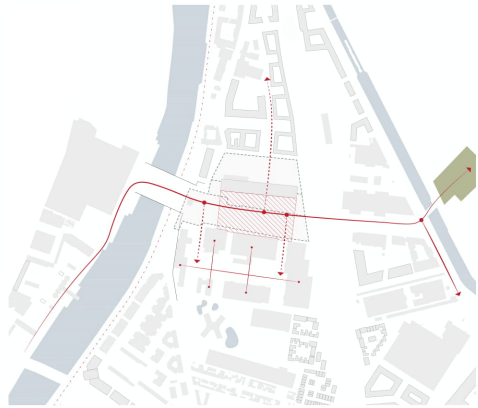
MASTERPLAN



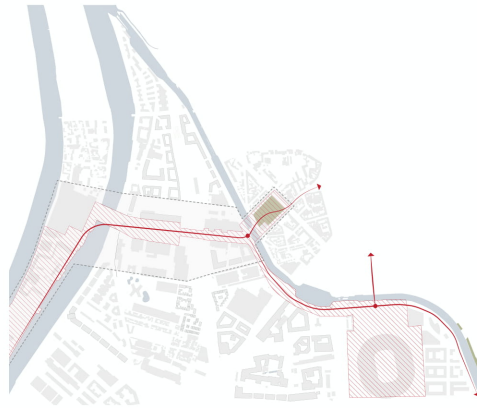
MAIN TRACE OF PROPOSAL



VIEW FROM GALLERY TO SQUARE ON THE SEINE



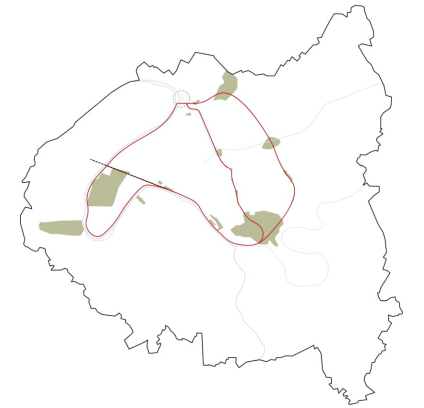
S



M



L



XL



THANK YOU FOR YOUR ATTENTION