



LA MAISON DE LA VIE

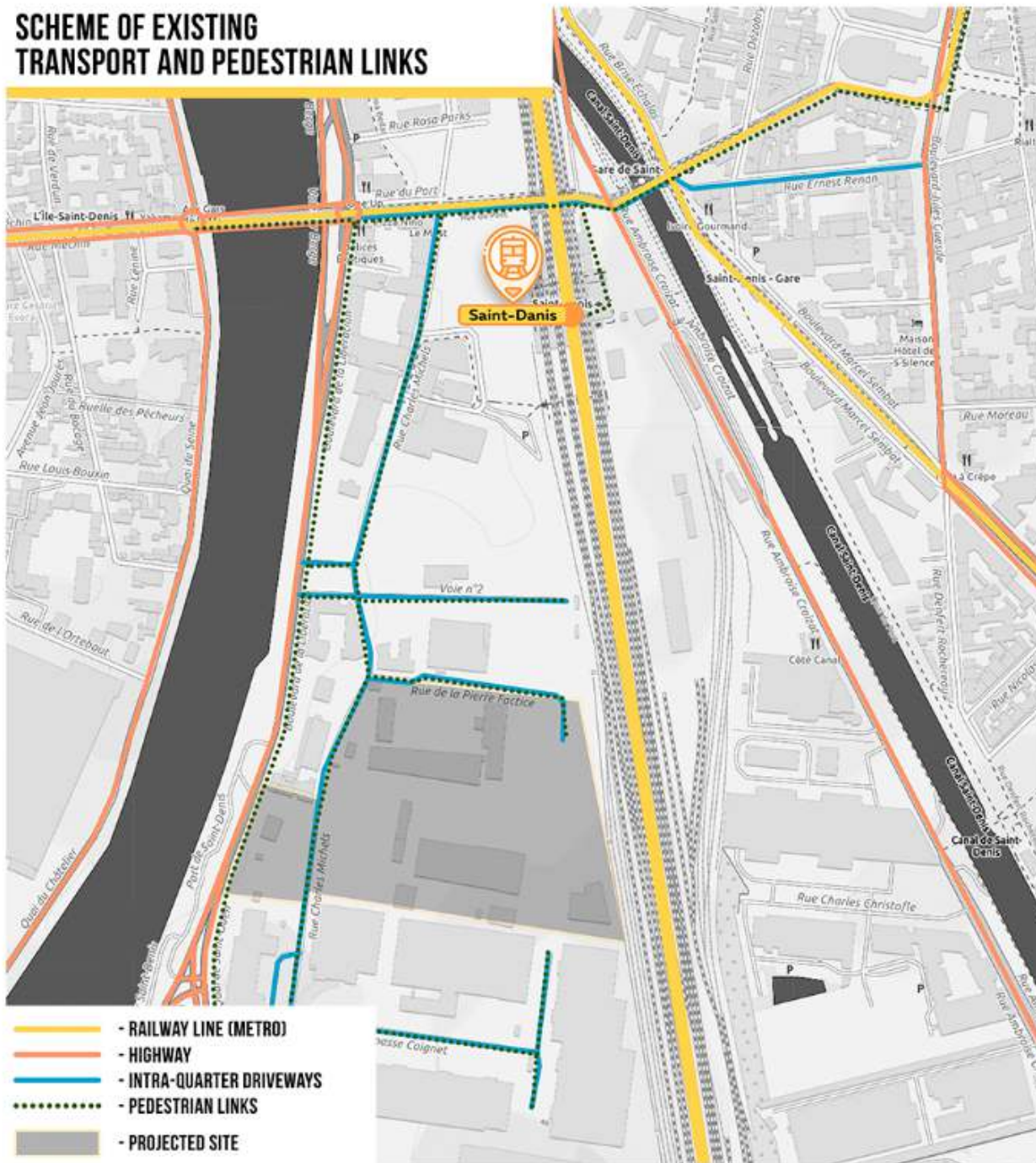
**ALIAKSEI LIOHENKI
ANASTASIYA LIOHENKAYA**

BELARUS

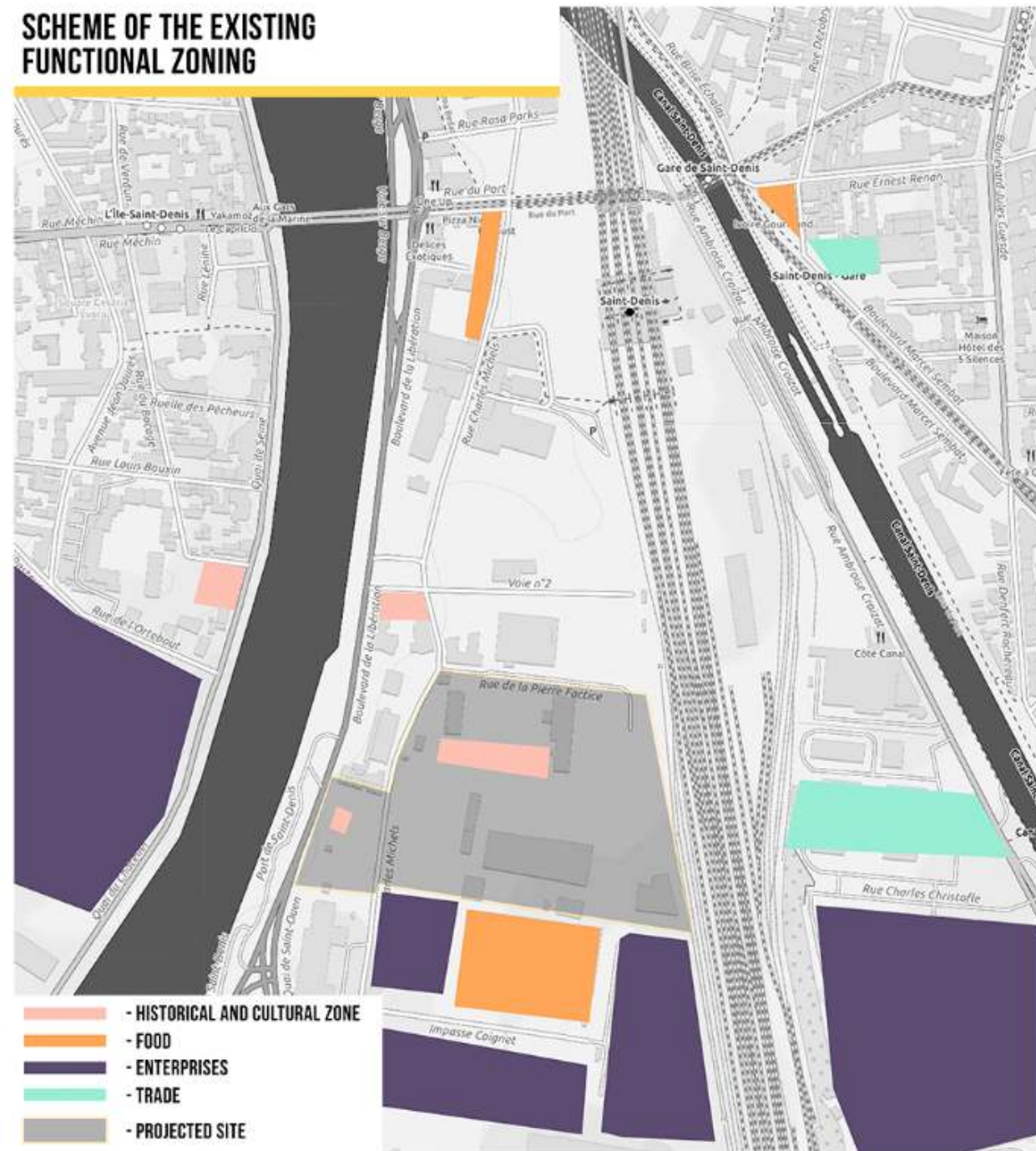
ARCHDESIGN



SCHEME OF EXISTING TRANSPORT AND PEDESTRIAN LINKS

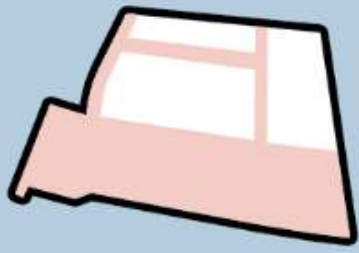


SCHEME OF THE EXISTING FUNCTIONAL ZONING

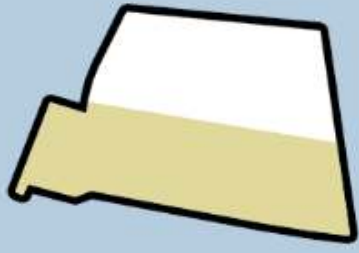


TERRITORY DEVELOPMENT STAGES

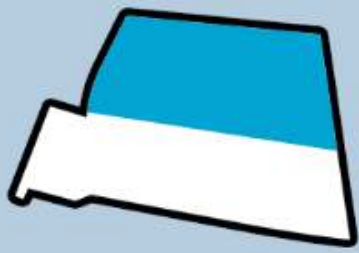
STAGE 1



STAGE 2



STAGE 3

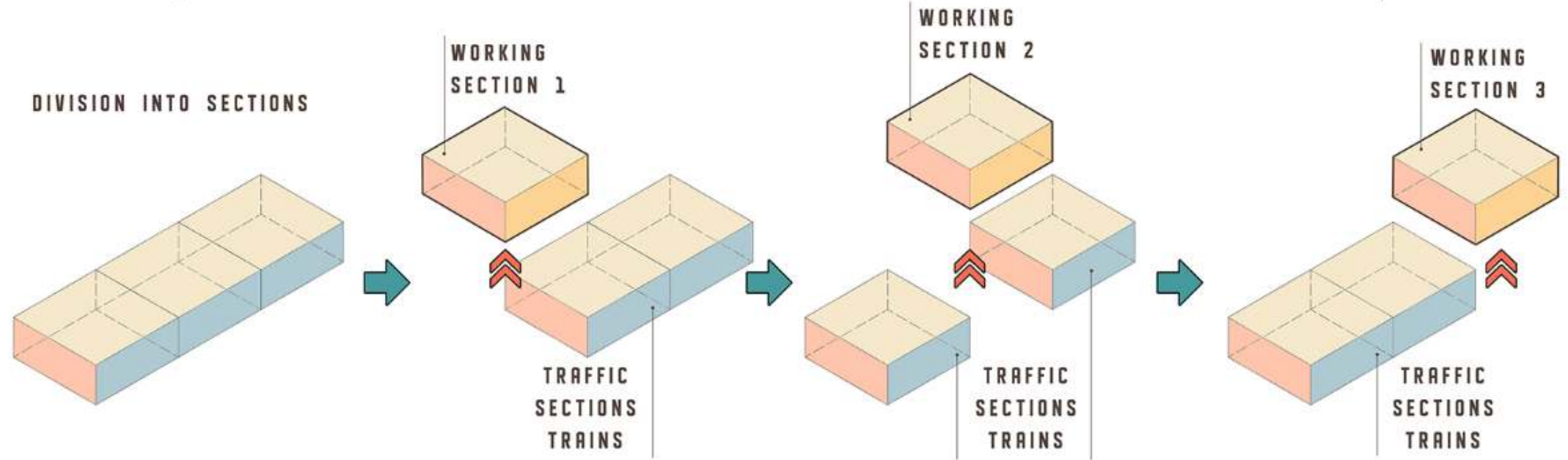
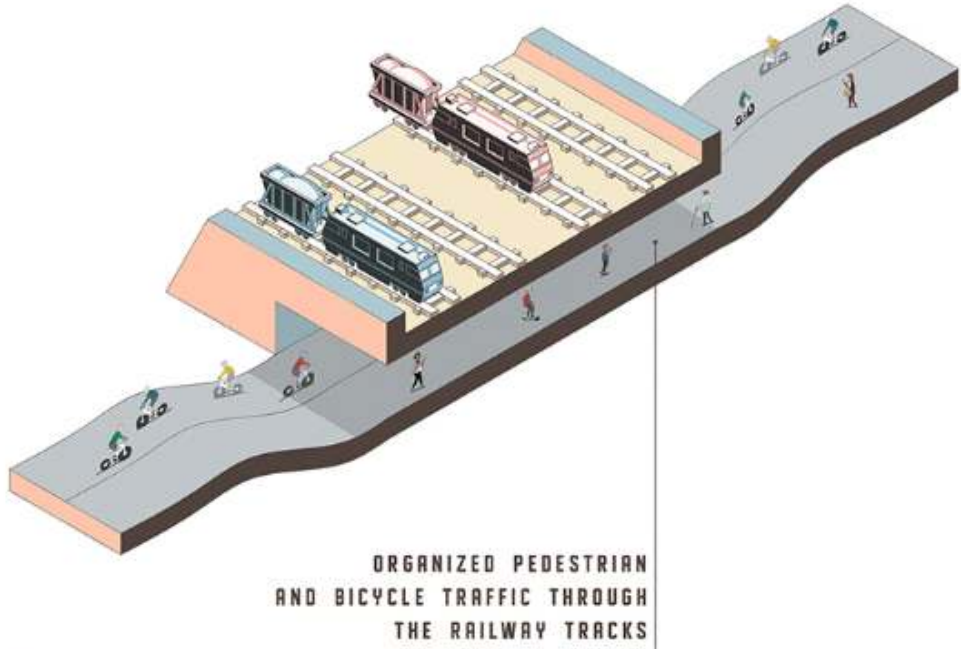
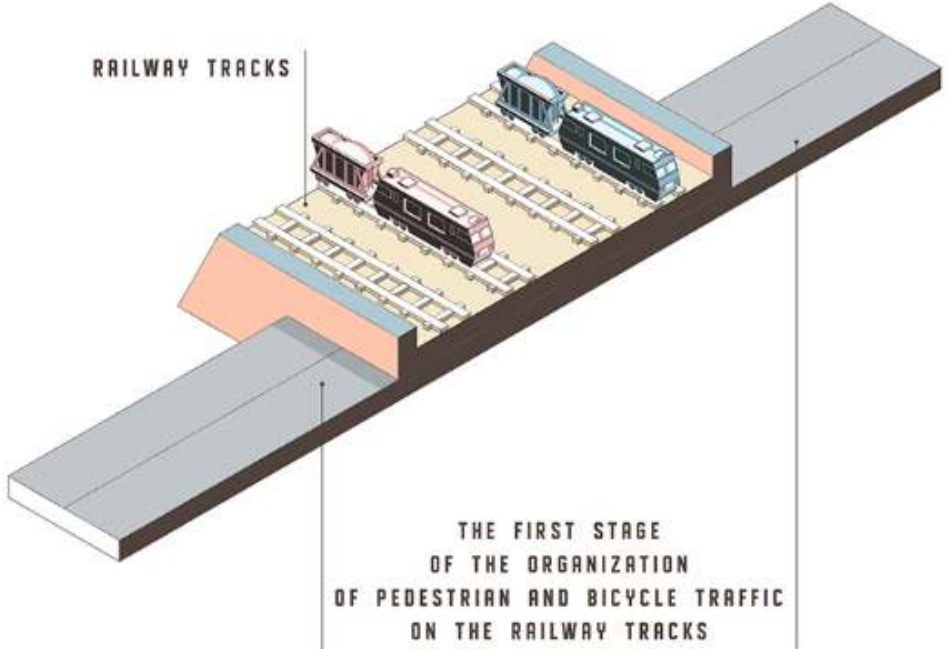


SCHEME OF NEW TRANSPORT, PEDESTRIAN AND CYCLING CONNECTIONS



-  - INTRA-QUARTER DRIVEWAYS
-  - MAJOR PEDESTRIAN LINKS
-  - CYCLING LINKS

A STEP-BY-STEP PLAN FOR THE IMPLEMENTATION OF THE ORGANIZATION OF THE TRANSITION THROUGH THE RAILWAY TRACKS



SCHEME OF THE NEW FUNCTIONAL ZONING



- HISTORICAL AND CULTURAL HERITAGE ZONE (MUSEUM)



- RECREATION AND SOCIAL AREA / PARK / PUBLIC LEISURE



- PET WALKING AREA



- NEW HOUSING ZONE



- TRADE ZONE



- FOOD ZONE



- ACTIVE RECREATION AREA



- EDUCATION ZONE



- UNDERGROUND PARKING

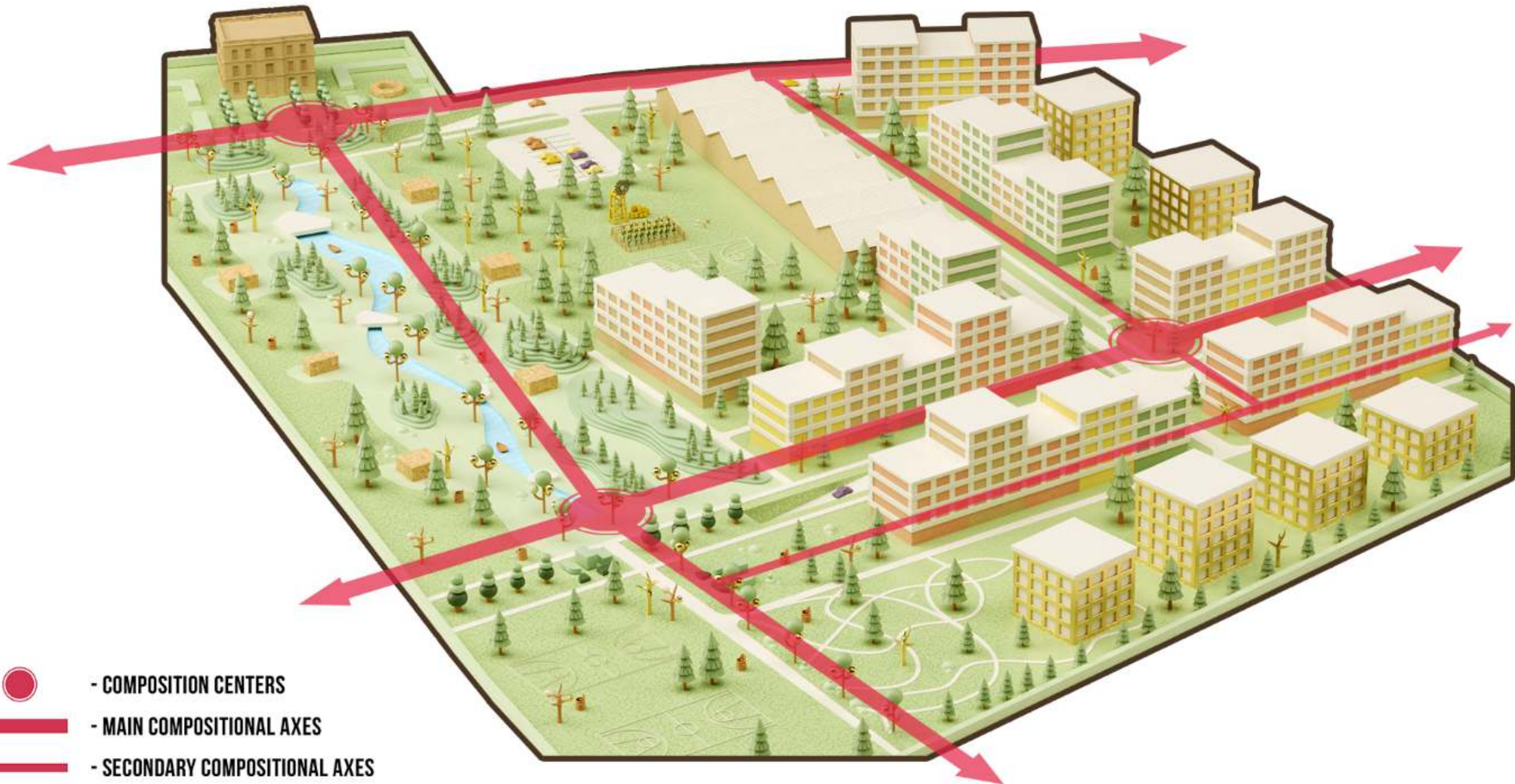


- DESCENT TO THE RIVER



- RAILROAD CROSSING

SCHEME OF THE COMPOSITIONAL ORGANIZATION OF SPACE





COIGNET BUILDING

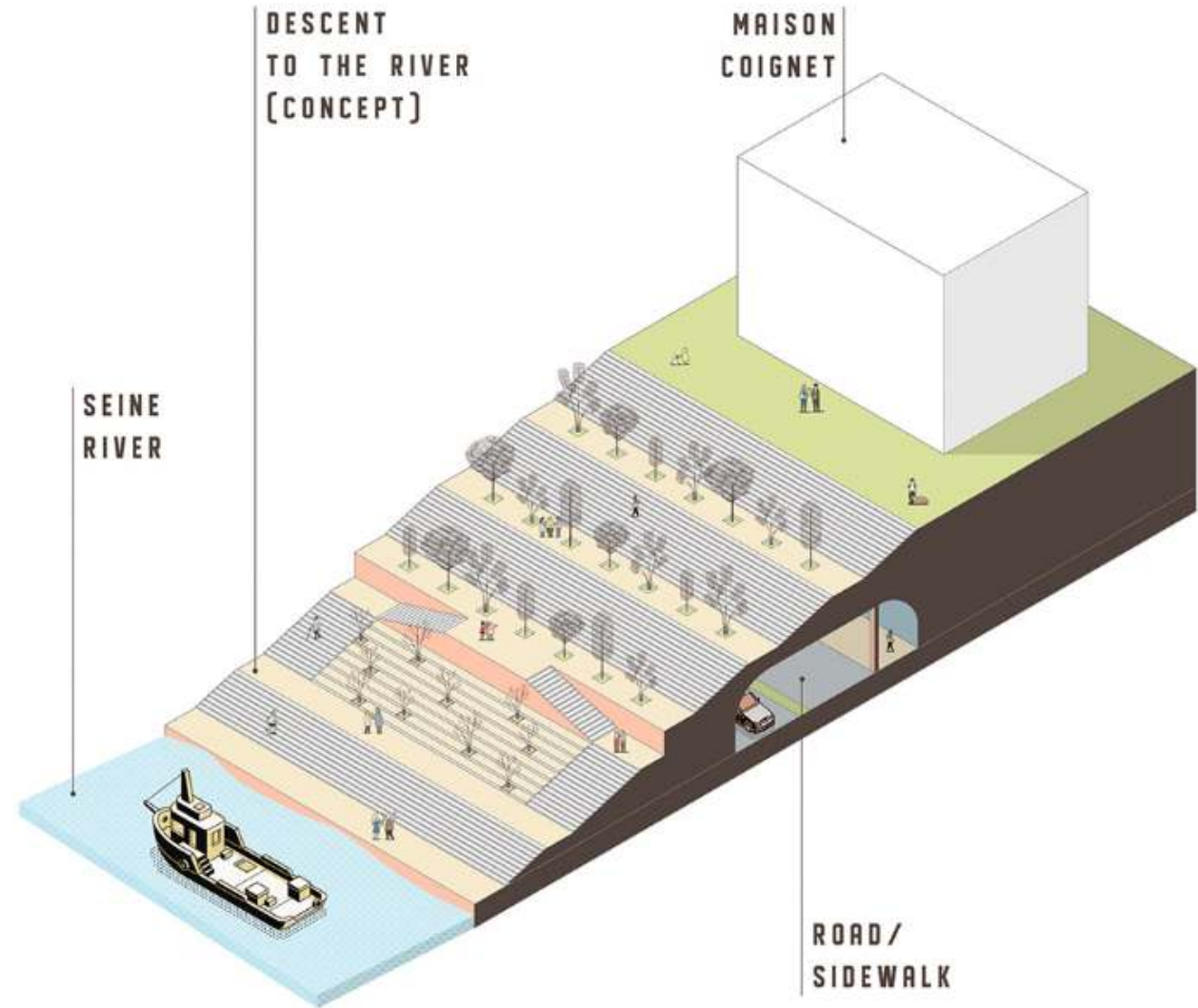
Maison Coignet

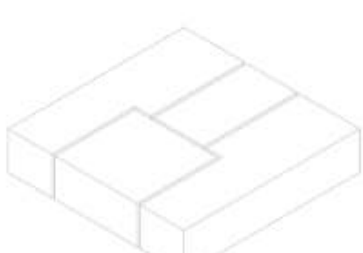
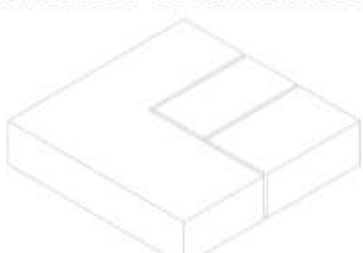
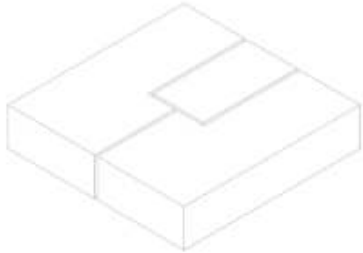
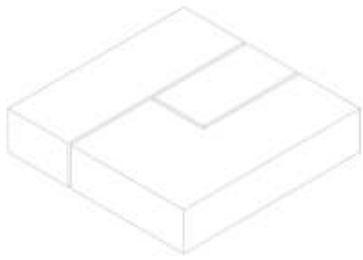




Maison Coignet

CREATING AN ORIGINAL LOOK





ARCHITECTURAL AND PLANNING SOLUTIONS FOR
RESIDENTIAL FUNCTION

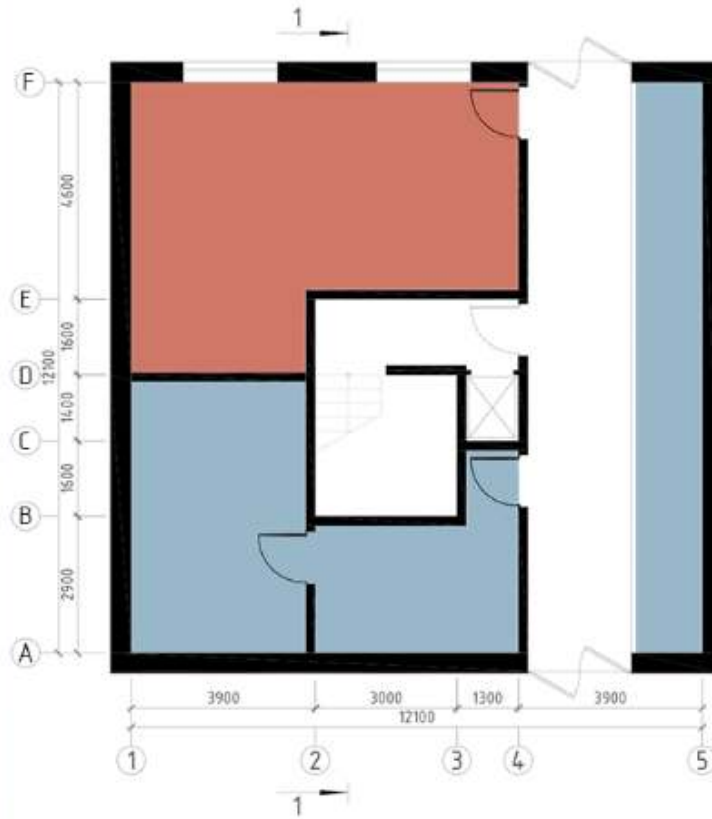
Fonction résidentielle



BUILDING TYPE 1

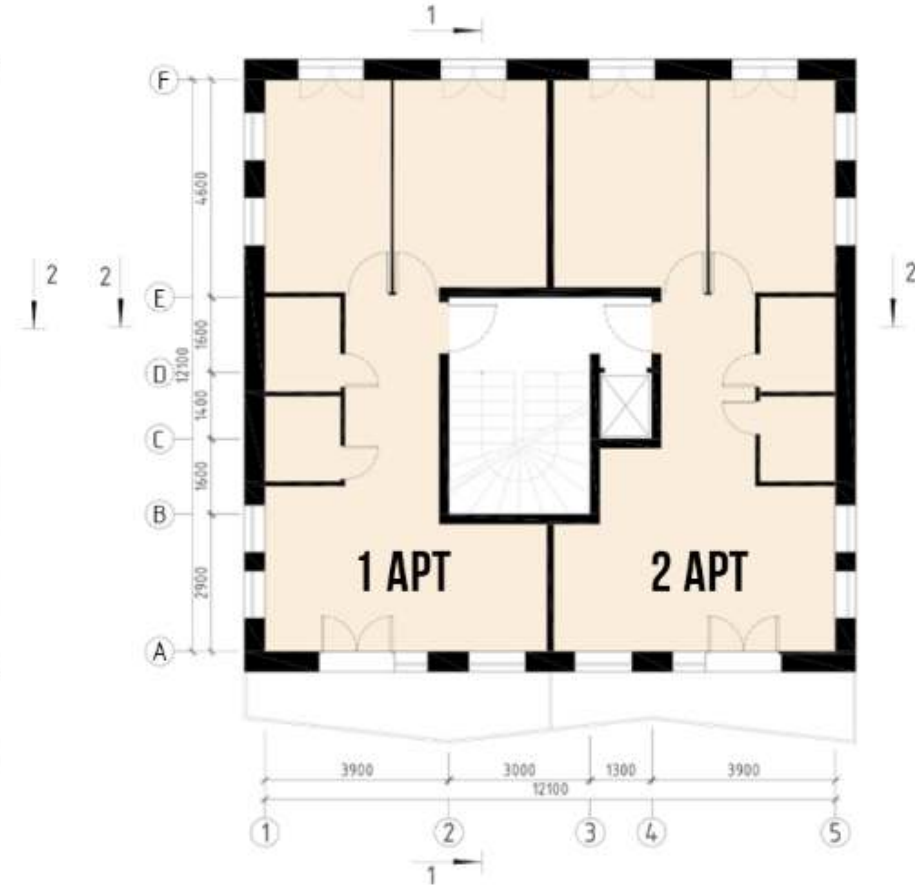


PLAN +0,000

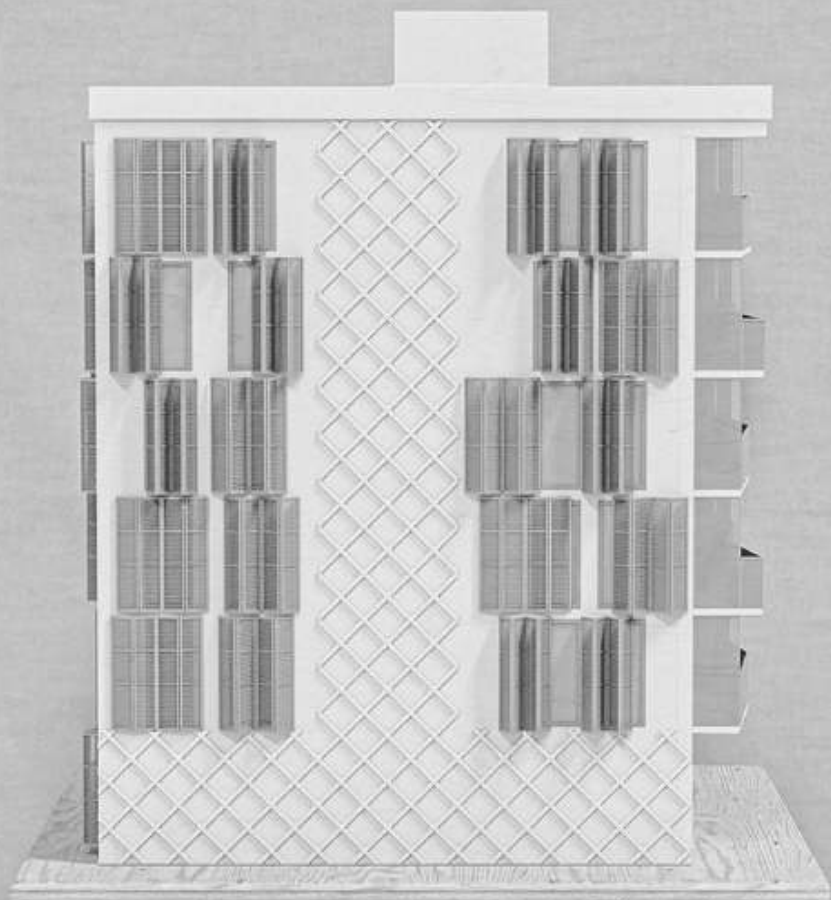


-  - PUBLIC AND SHOPPING AREA
-  - TECHNICAL ROOMS /
PARKING FOR BICYCLES /
GARBAGE SORTING

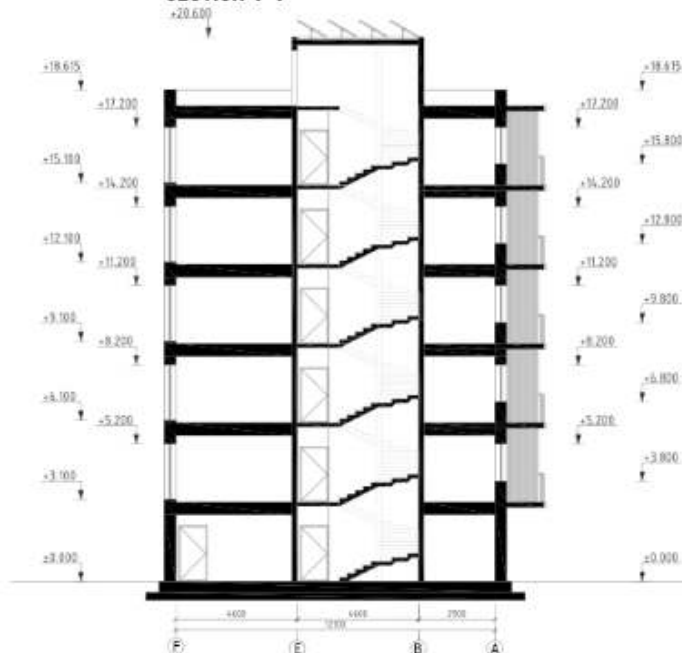
TYPICAL PNAL



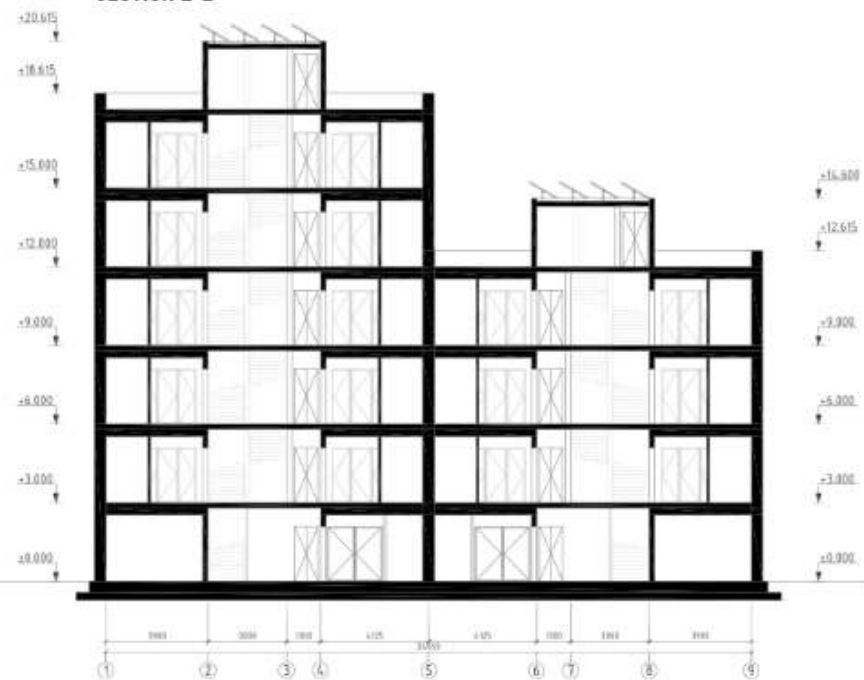
-  - 1 APT - T3 - 60M²
-  - 2 APT - T3 - 62M²



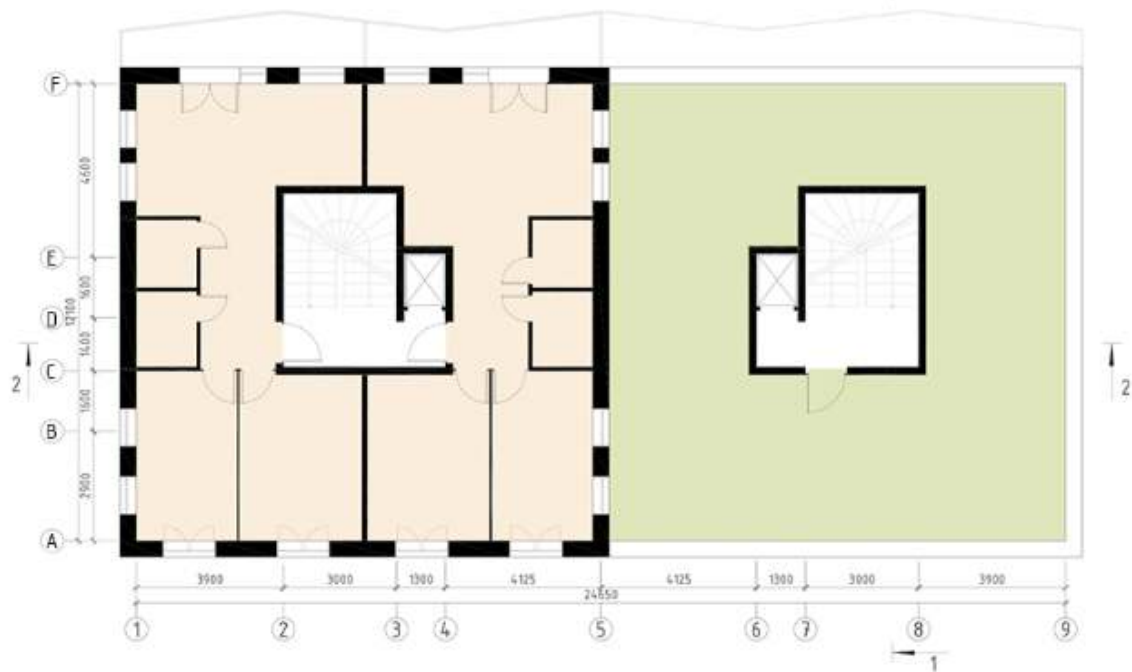
SECTION 1-1



SECTION 2-2



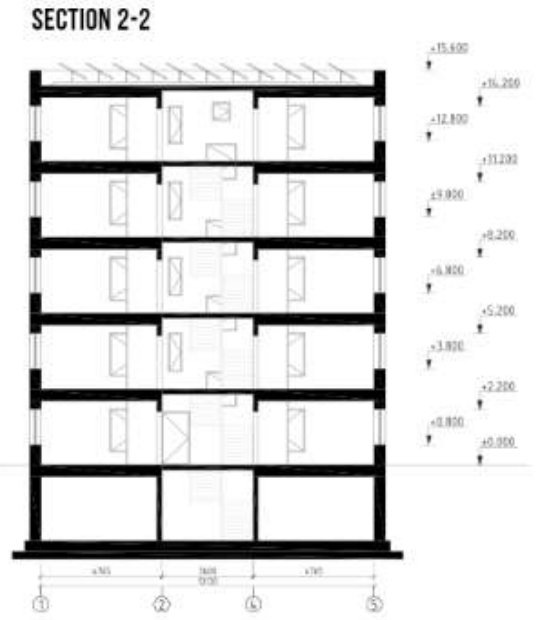
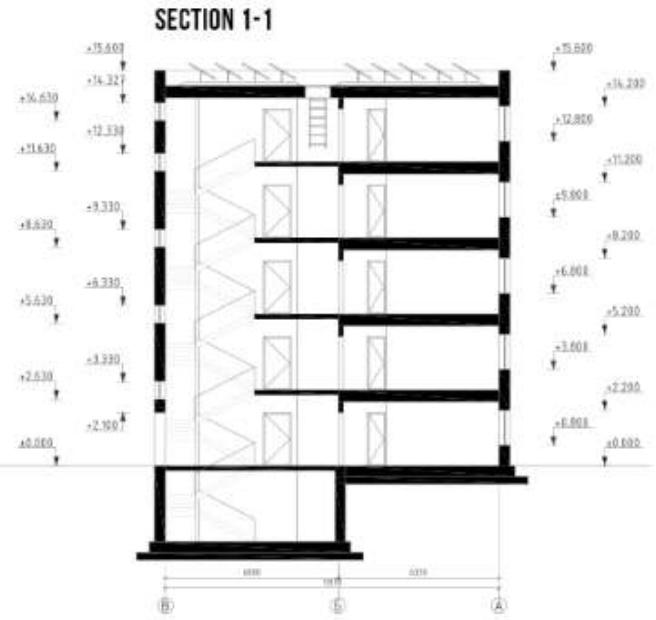
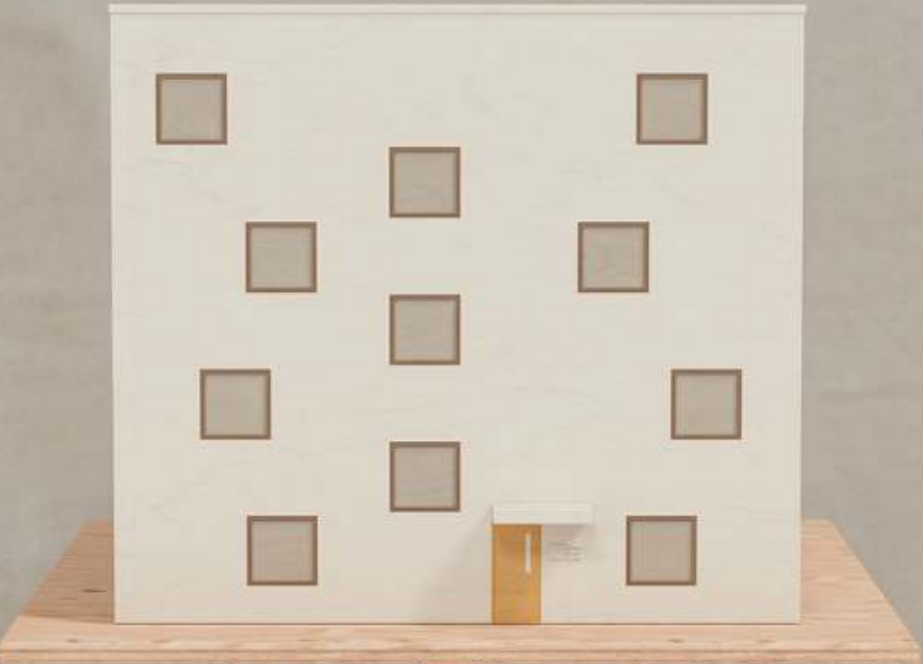
PLAN AT MARK +12,615



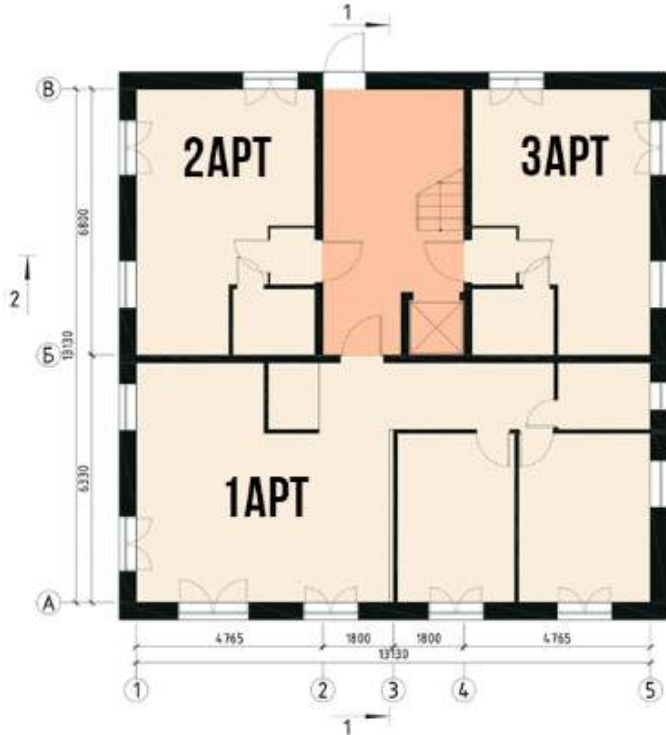




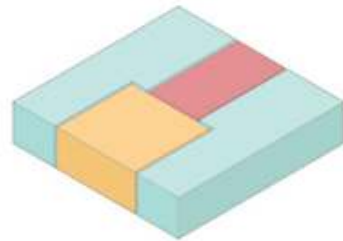
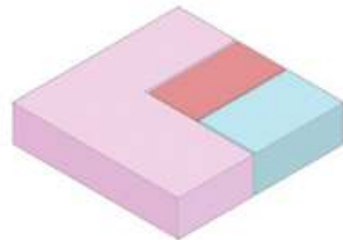
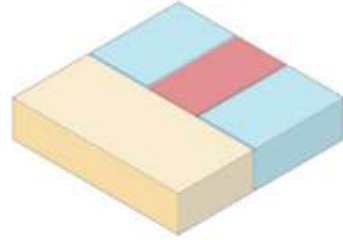
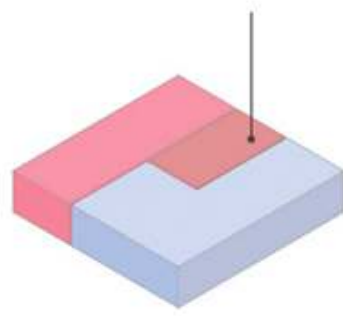
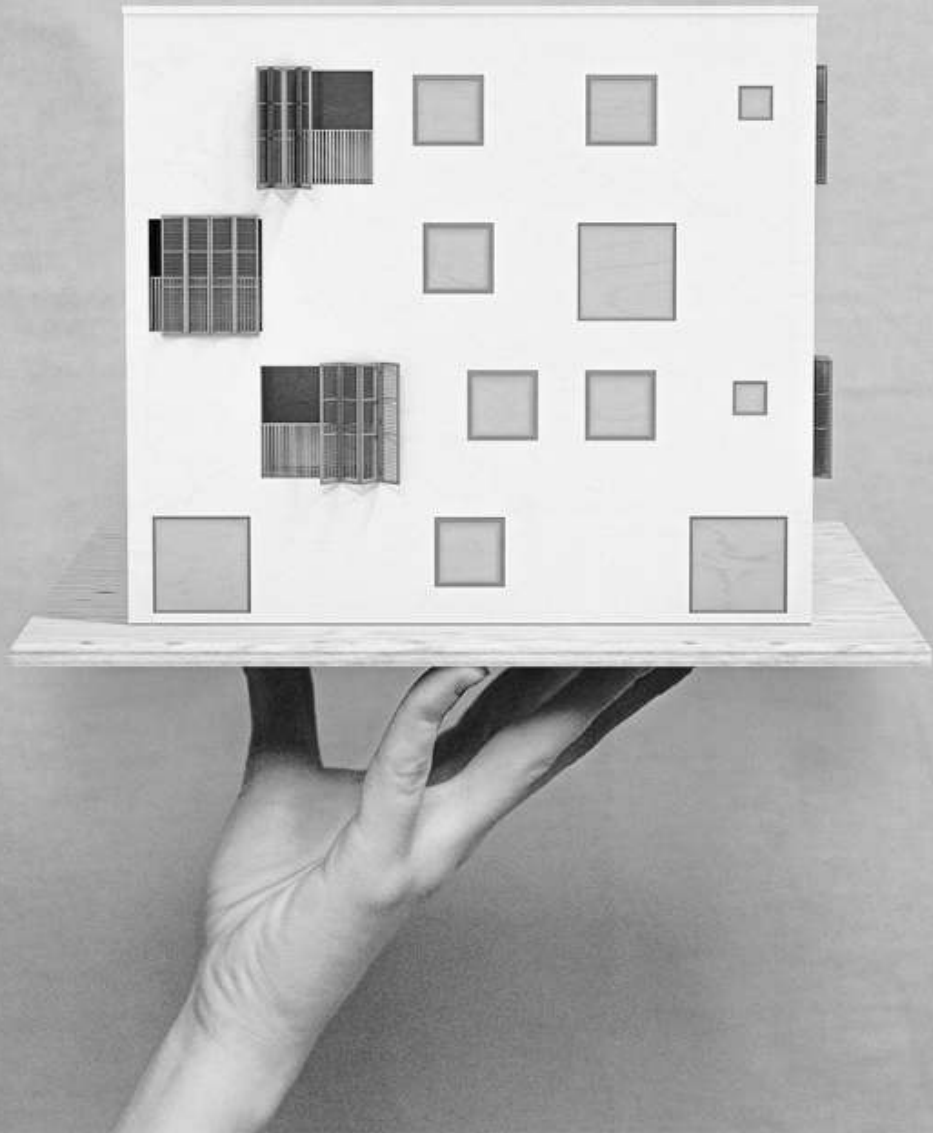
BUILDING TYPE 2



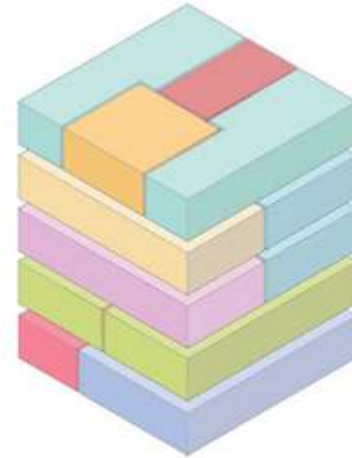
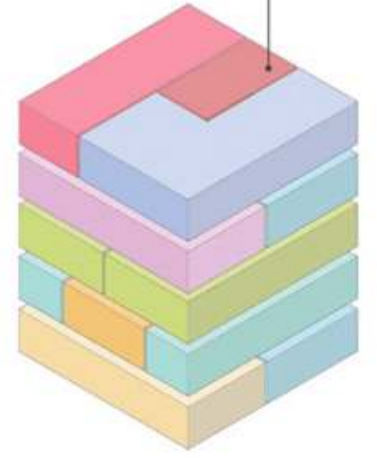
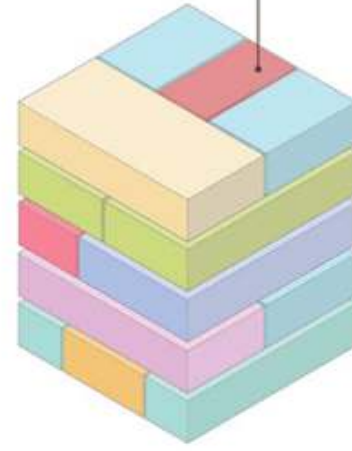
PLAN AT MARK +0,000



- 1 APT - T4 - 78M²
- 2 APT - T1 T*2 - 31M²
- 3 APT - T1 T*2 - 31M²



COMMON CORE OF THE BUILDING



**OPTIONS FOR COMBINATIONS
OF PLANNING SOLUTIONS MODULES**

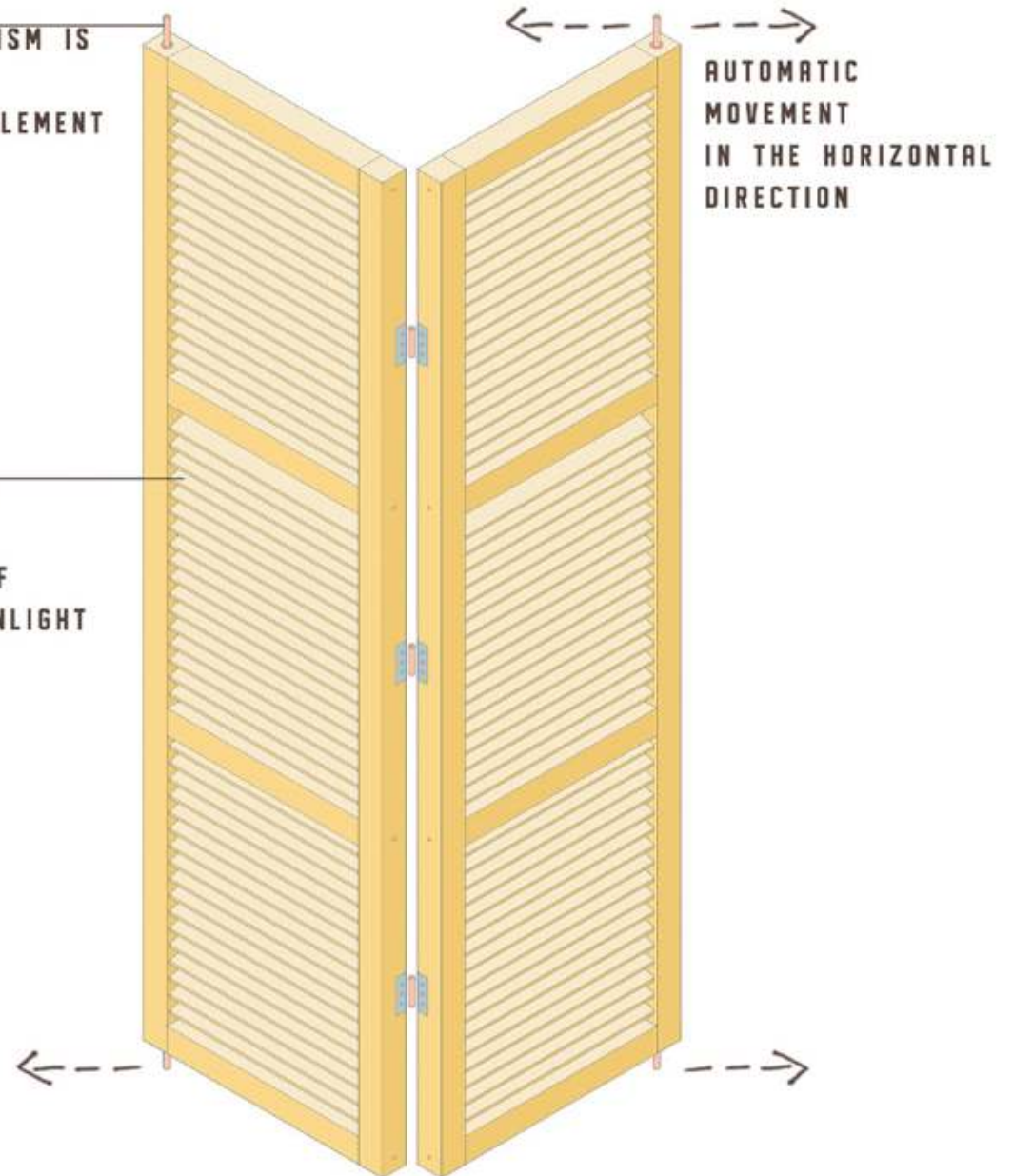




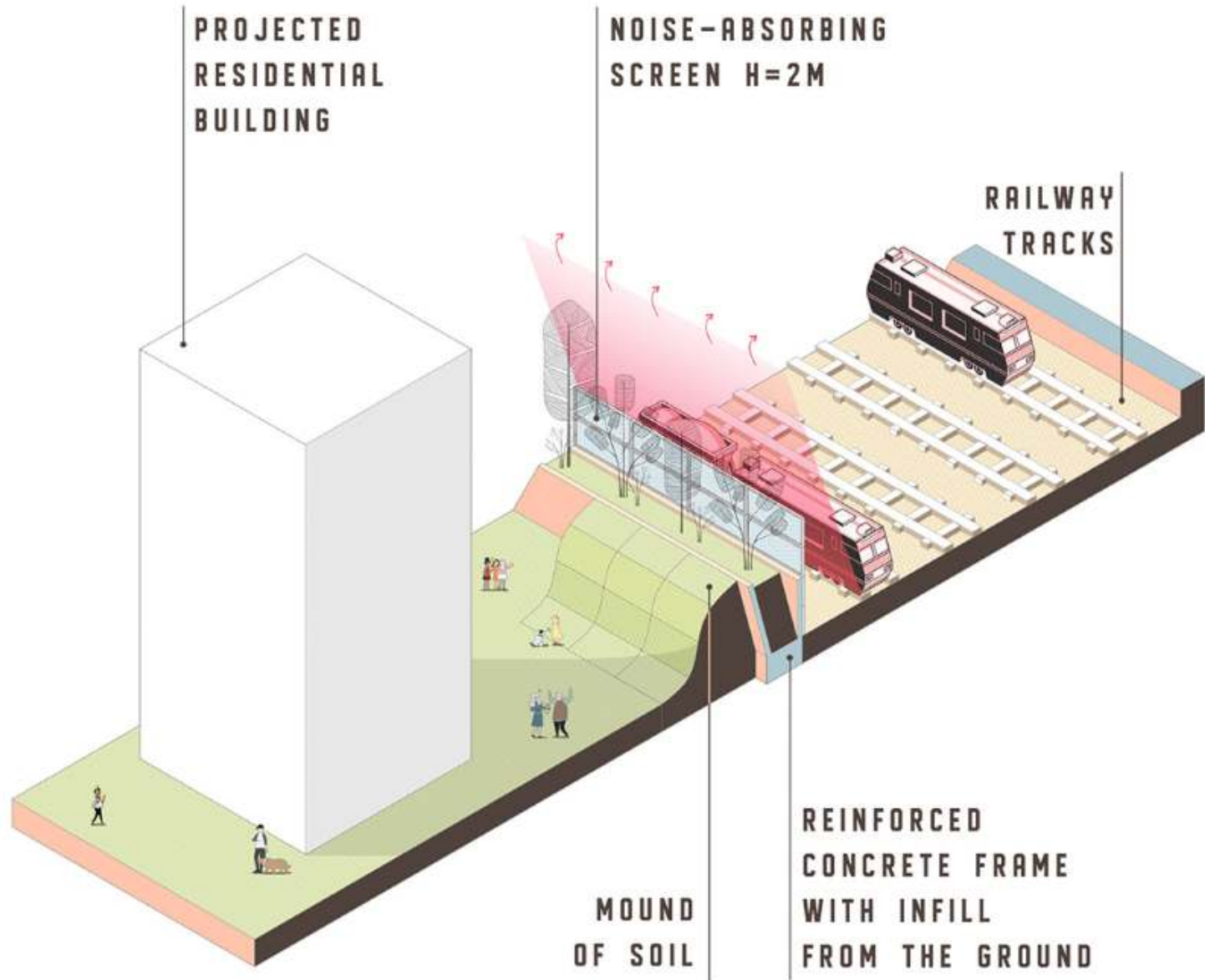
AUTOMATIC SHUTTERS

THE MECHANISM IS
FIXED IN
THE GUIDE ELEMENT

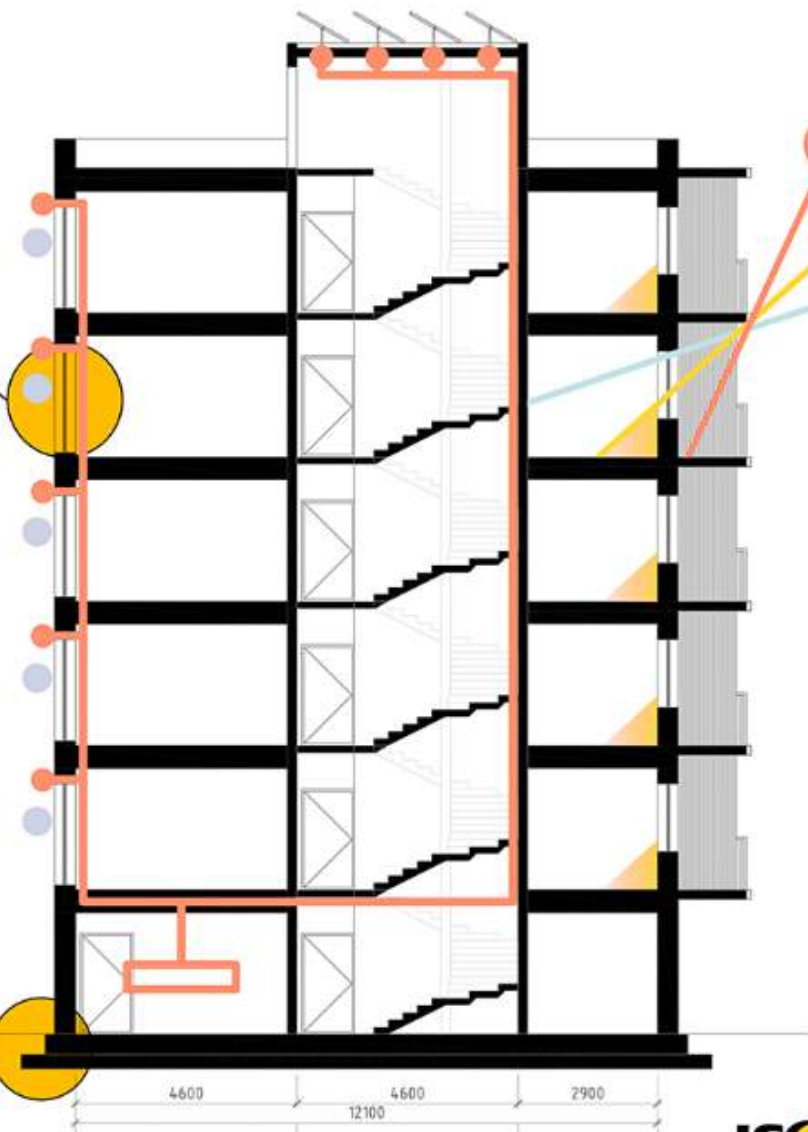
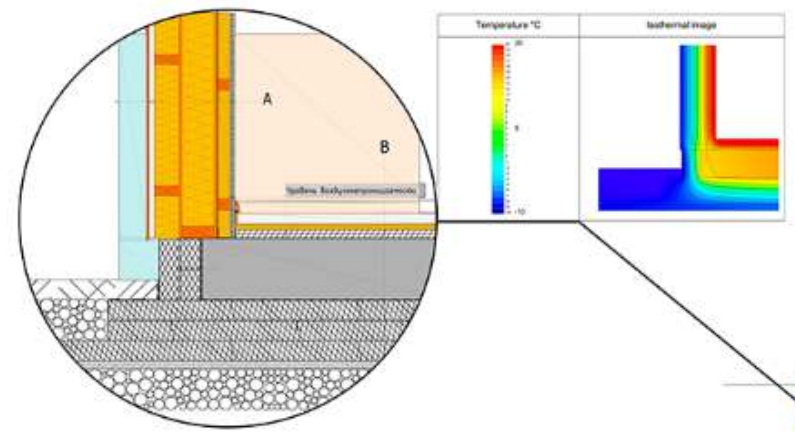
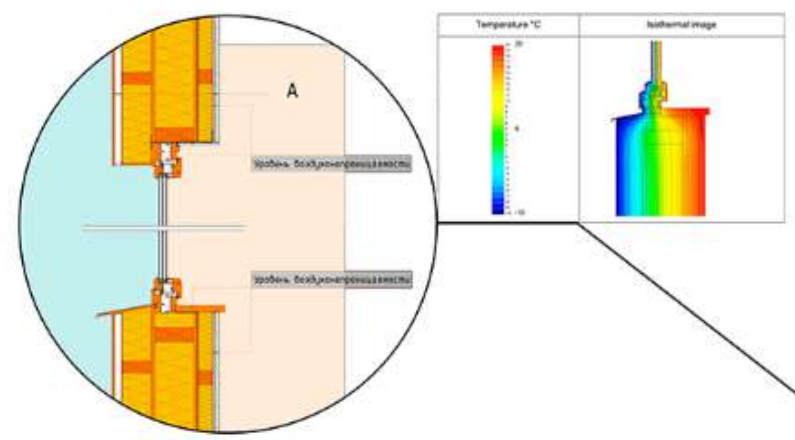
BLINDS THAT
RESPOND TO
THE FLOW OF
AIR AND SUNLIGHT



PROTECTION SCHEME AGAINST RAILWAY NOISE



**SECTION 1-1
TYPE 1 BUILDINGS**

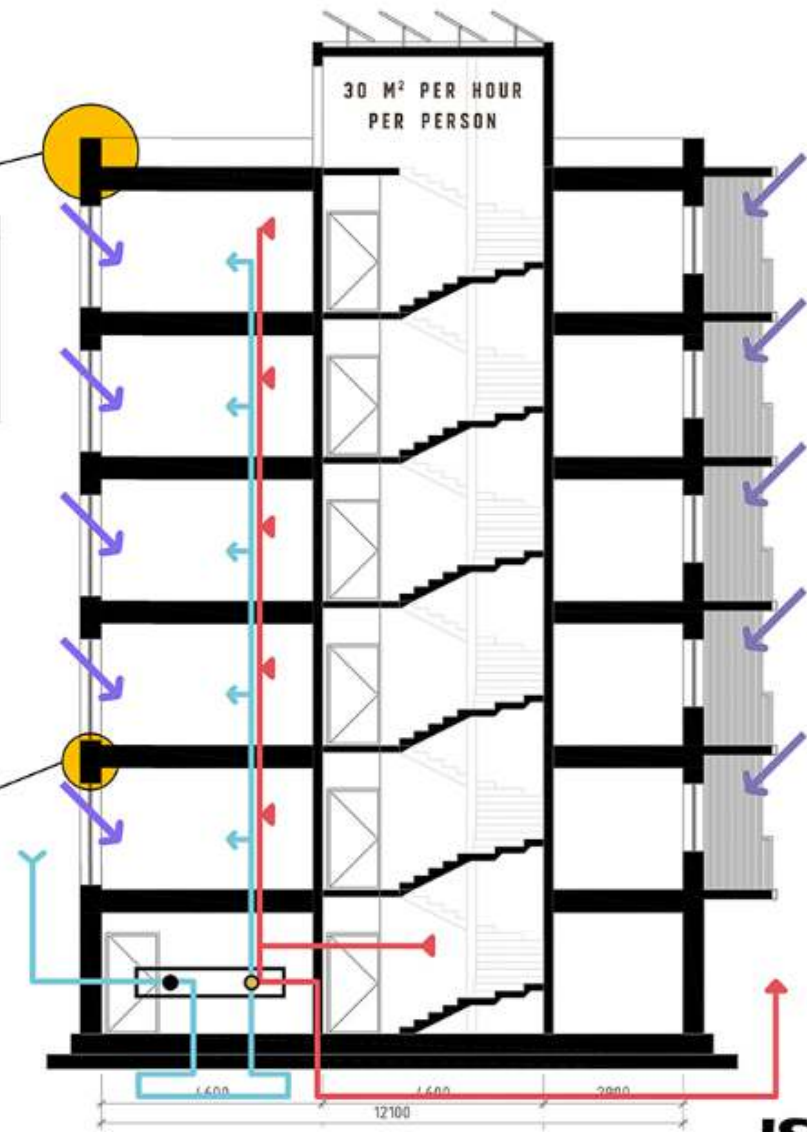
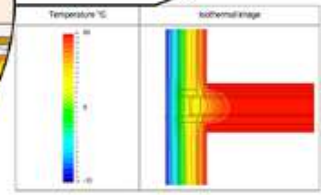
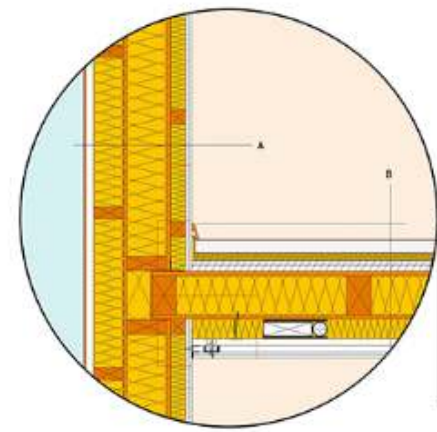
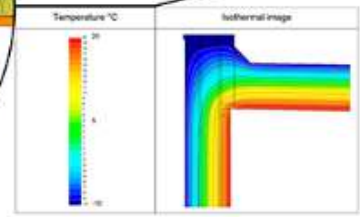
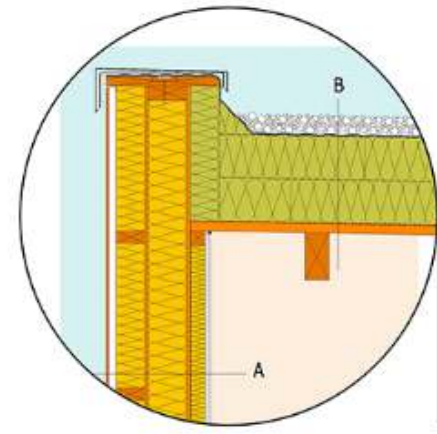


SUMMER SOLSTICE 64° 2'
 AVERAGE INDICAT 40° 9'
 WINTER SOLSTICE 17° 6'

- ELECTRICITY GENERATION NETWORK
- DARKENING WITH SUNSCREENS AND SOLAR PANELS UP TO 80%

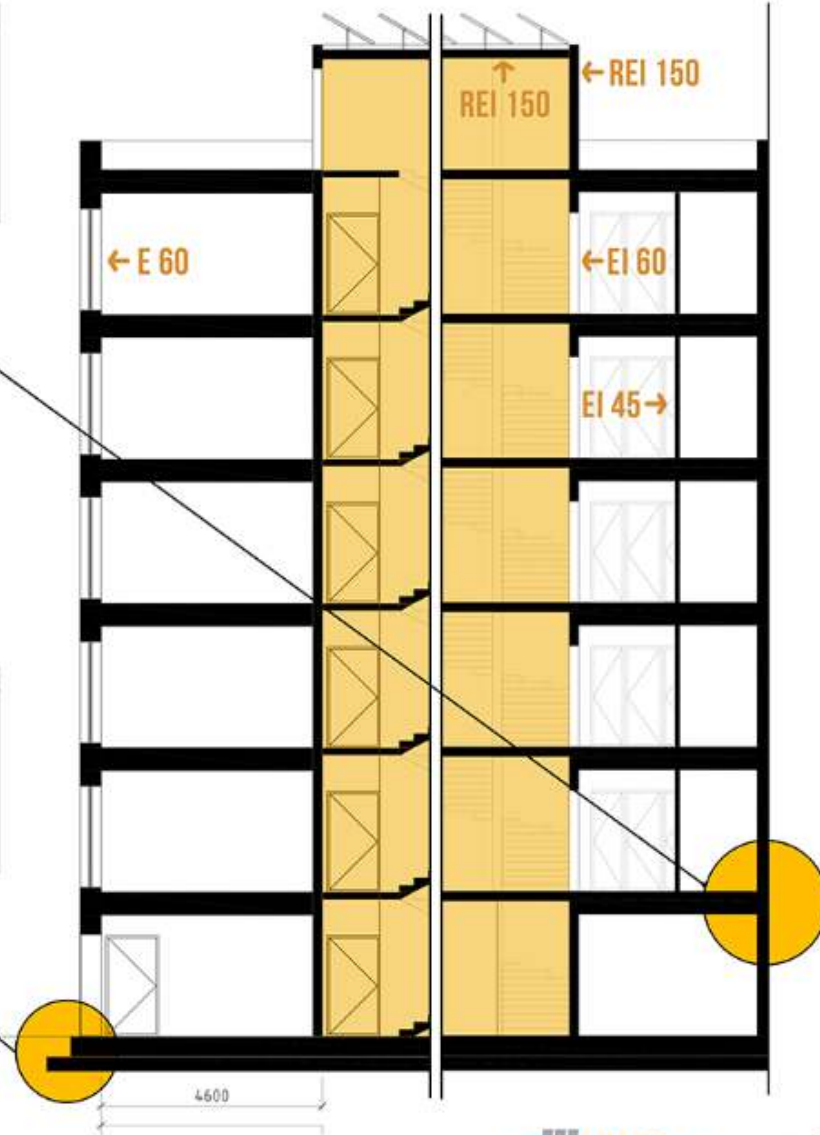
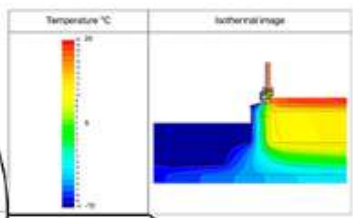
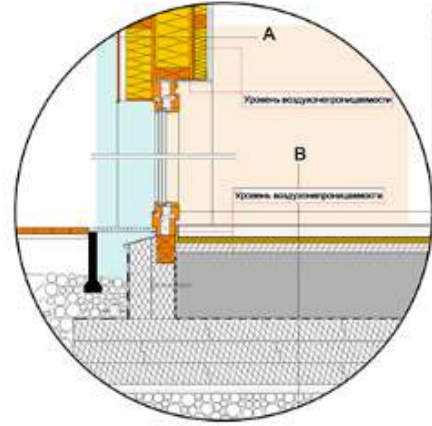
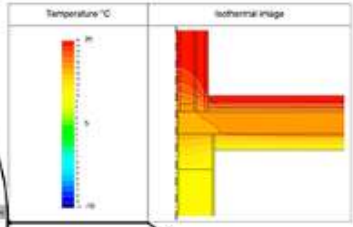
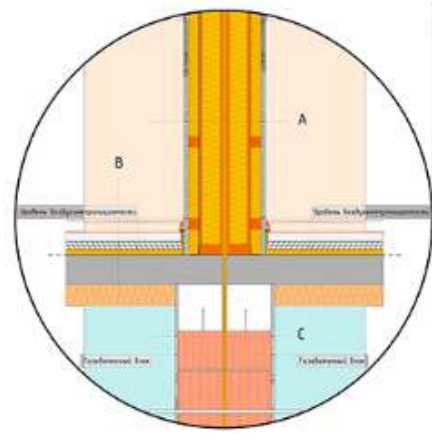


SECTION 1-1
TYPE 1 BUILDINGS



- FILTER
- SUPPLY AND EXHAUST SYSTEM
- ↘ VENTILATION SYSTEM SUPPLY AND EXHAUST O₂
- ← FRESH AIR SUPPLY
- THE OUTFLOW OF AIR

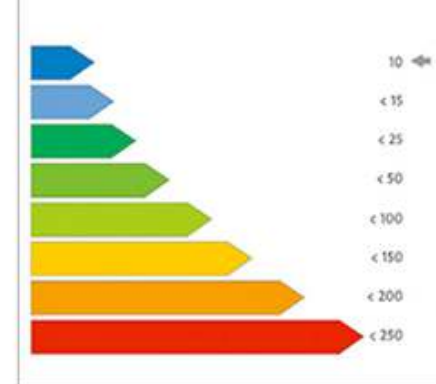
SECTION 1-1/2-2
BUILDING TYPE 1



CALCULATIONS

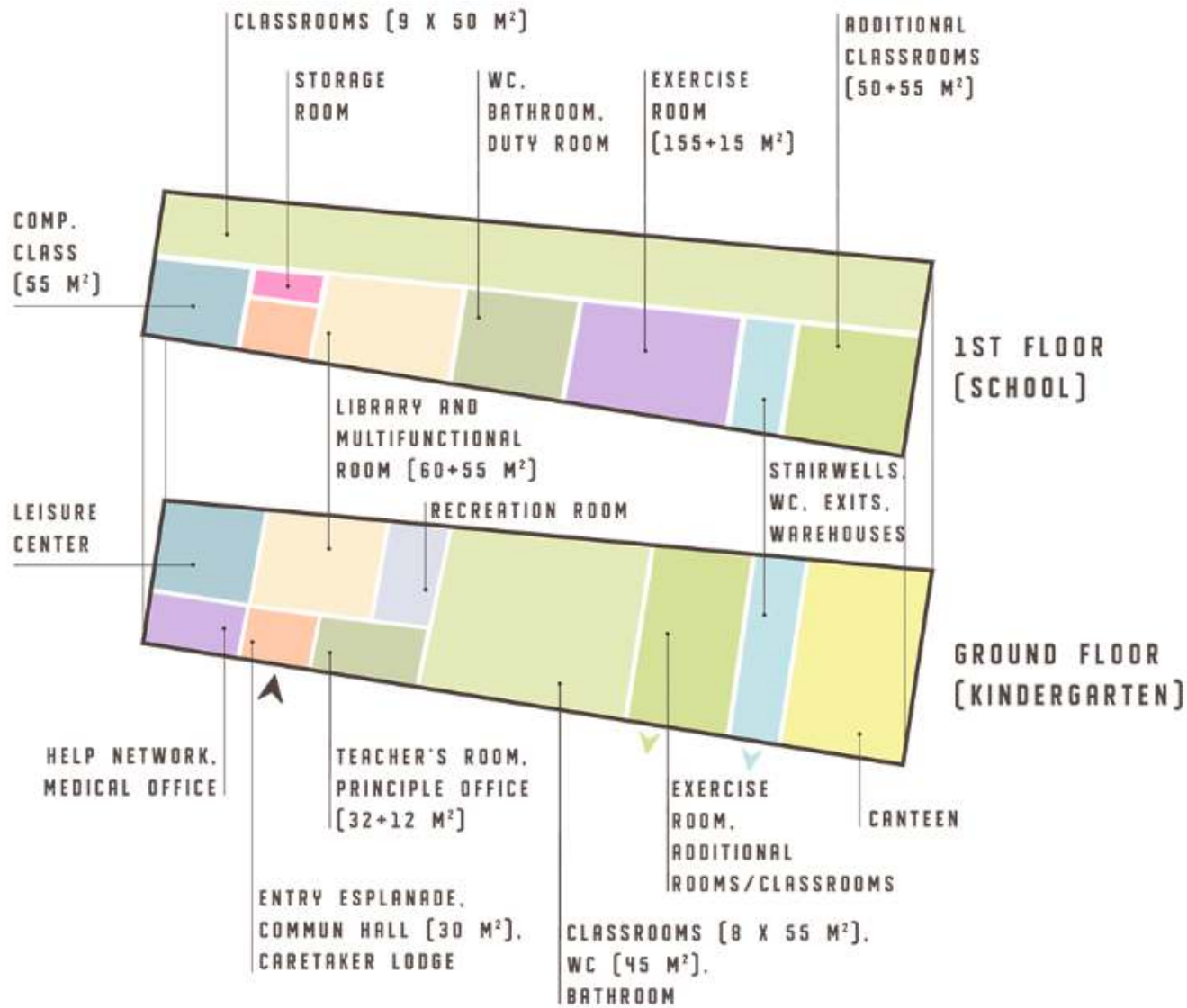
Specific Heat Demand	
Transmission Heat Losses:	14487.84 kWh/a
Ventilation Heat Losses:	14227.33 kWh/a
Total Heat Losses:	28714.97 kWh/a
Internal Heat Gains:	8190.67 kWh/a
Solar Heat Gains:	14432.59 kWh/a
Total Heat Gains:	20708.46 kWh/a
Annual Heat Demand:	8006.51 kWh/a
Specific Heat Demand:	9.80 kWh/(m ² a)

Energy efficiency classes



SCHOOL AND KINDERGARTEN

l'école maternelle
l'école maternelle



- MAIN ENTRANCE
- ACCESS TO THE KINDERGARTEN PLAYGROUND
- ACCESS TO THE PRIMARY SCHOOL PLAYGROUND

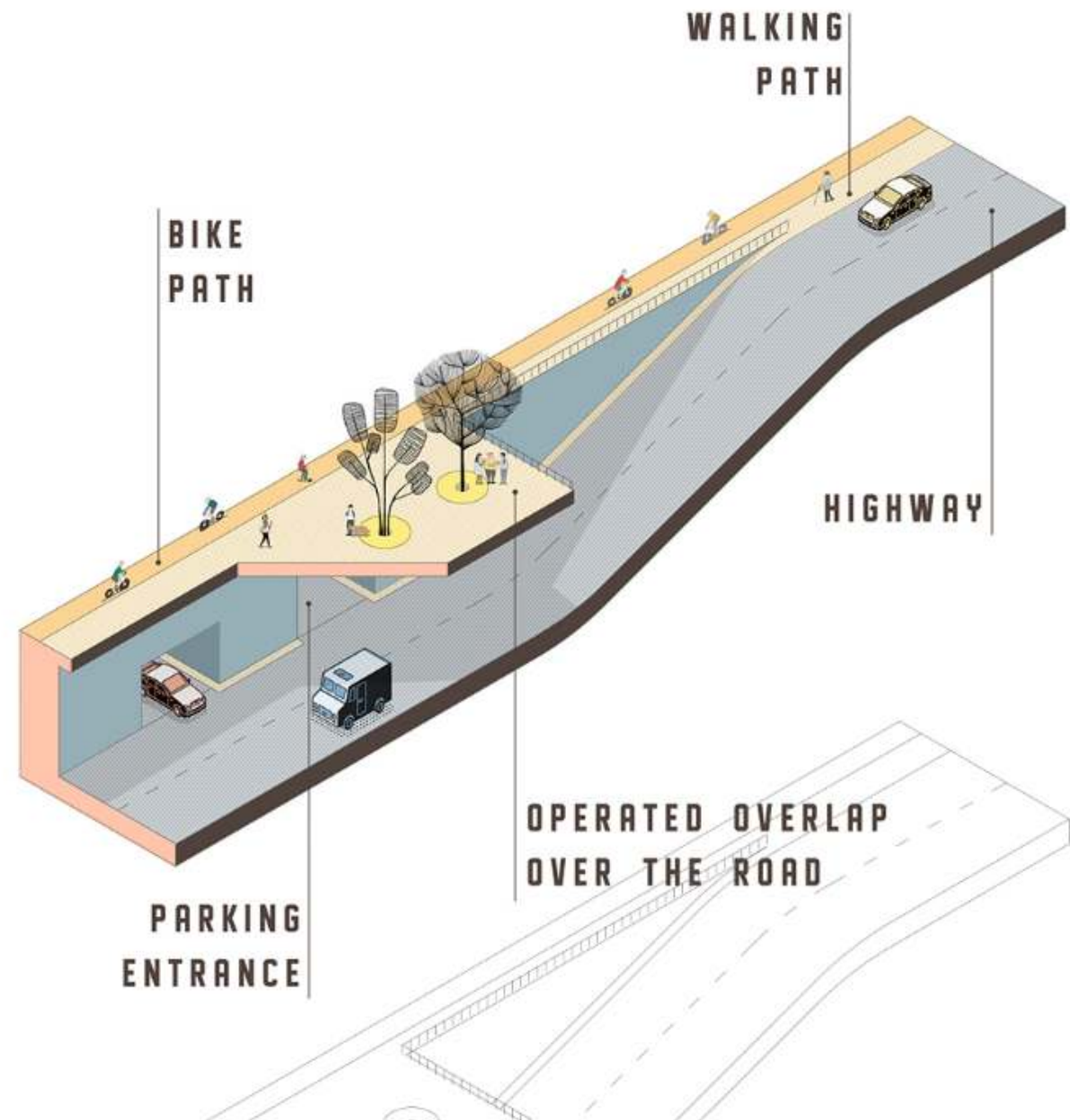


PARKING AND PARK

le parking et le jardin



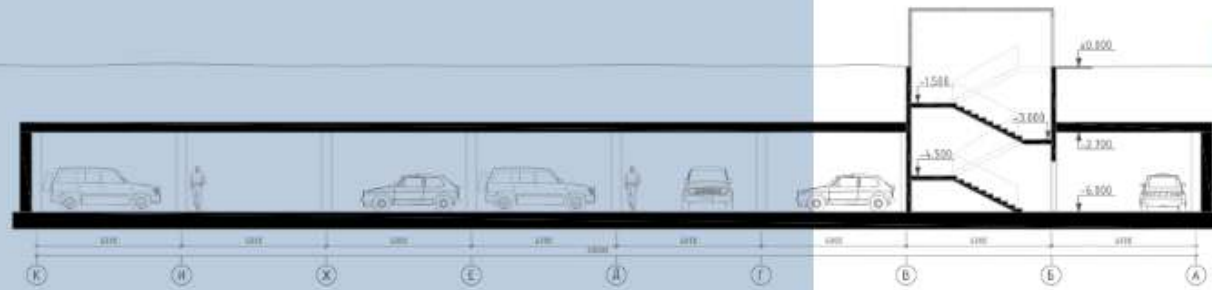
SCHEME OF DESCENT TO THE PARKING



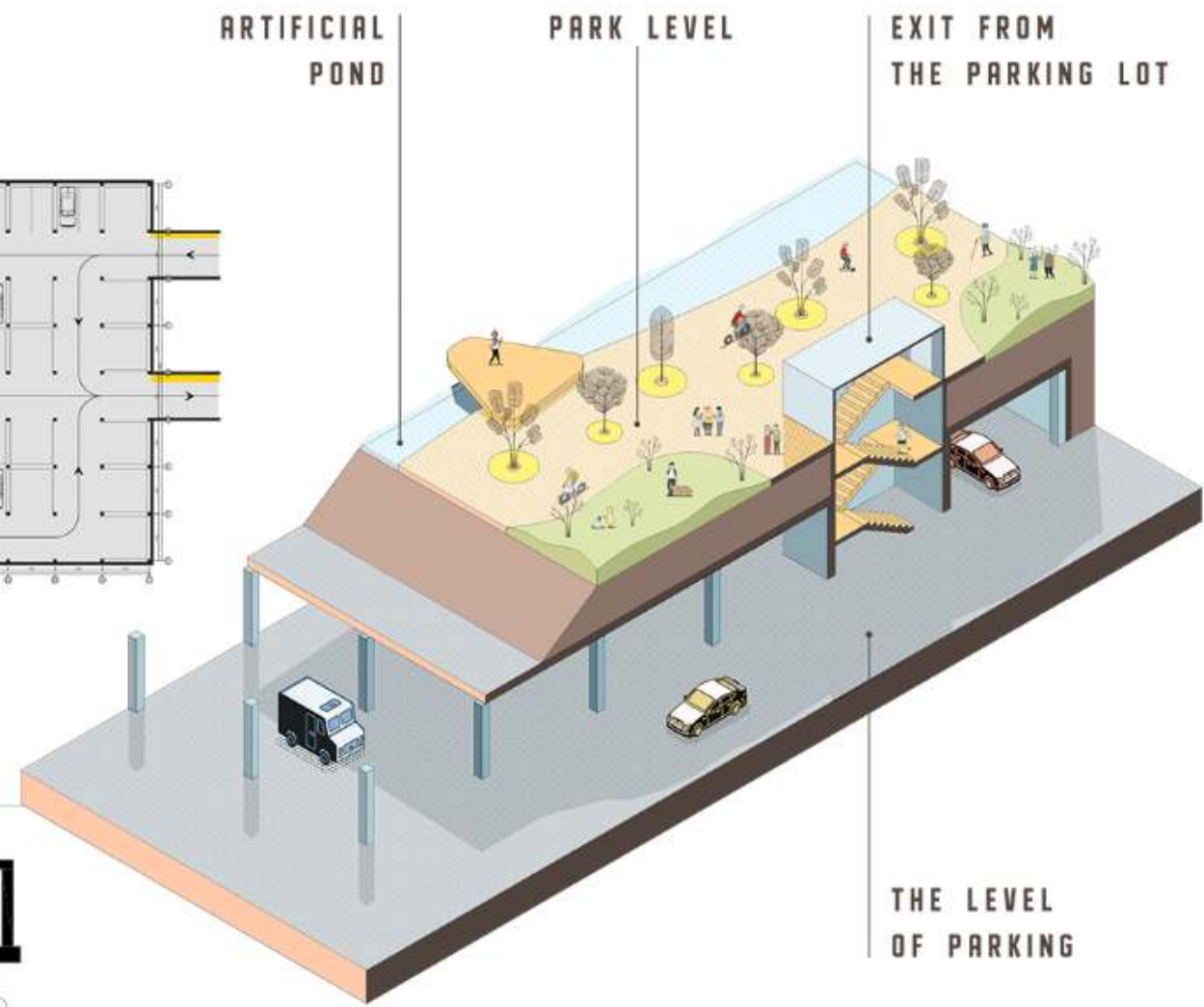
PARKING PLAN



SECTION 1-1



SCHEME OF INTERACTION BETWEEN THE PARK AND PARKING



PARK

*le jardin
le jardin*



TERRITORY ELEMENTS

POPLAR



SYCAMORE



WILLOW



SYCAMORE

