



MULTI COMFORT

Student Contest 2020 Saint Denis, Paris

Country: Croatia

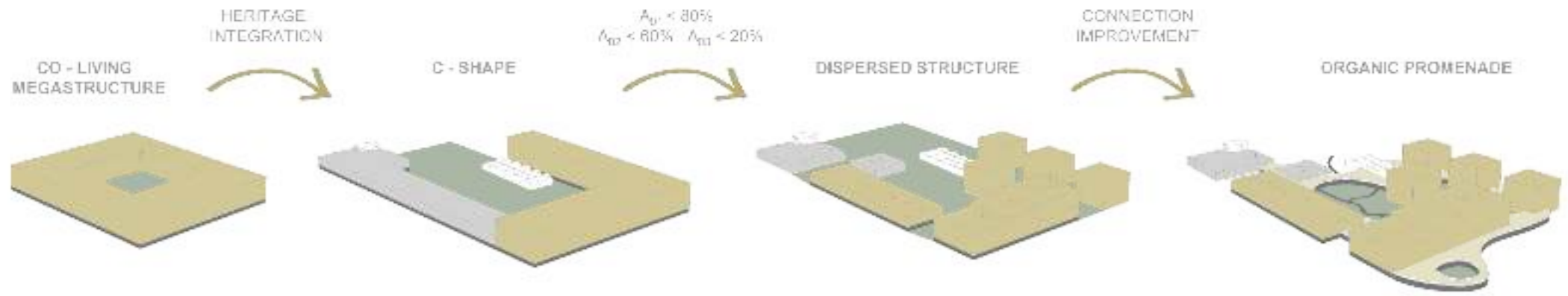
Students: Magdalena Mamíc, Sanja Perić



CONCEPT



- PARK
- COMMERCIAL
- EDUCATION
- RESIDENTIAL
- BUILDING HERITAGE UNDER PROTECTION



COMPLEX



COMPLEX

SINGLE UNITS

Smaller living units compensated with numerous transformation possibilities and quality shared spaces that encourage encounters.

STUDENT UNITS

Small living units compensated with common spaces that encourage co-living and give a sense of stimulating community.

SCHOOL

By wrapping the building around a cultural building heritage, school and Maison Coignet (adapted into a library and a gallery) together form an educational unity.

FAMILY UNITS

Largest living units for different types of families with one big module that can serve as children extended stay day care or common space for entertainment.

FOOD MARKET

Adaptation of an old warehouse into a food market which grows produce on hydroponics principle creates a healthy food source for the local community.

KINDERGARTEN

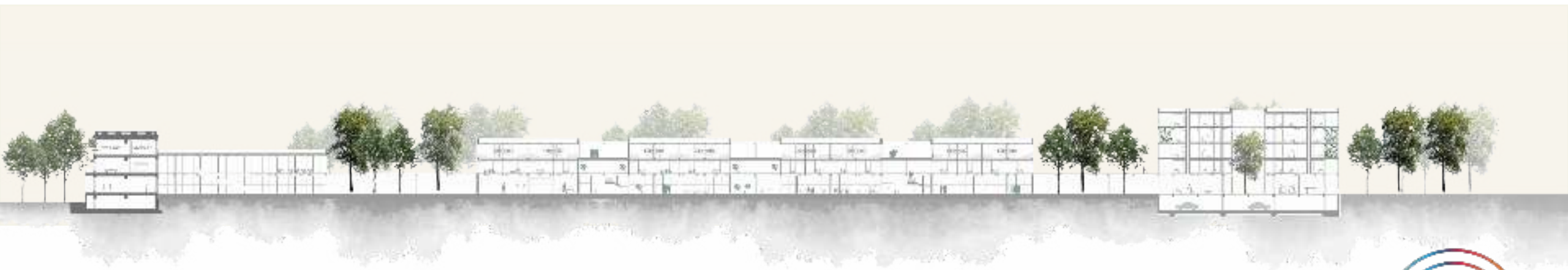
Positioned next to a park and a food market, kindergarten offers different experience and learning possibilities early on in a child development.



CHARACTERISTIC FLOOR

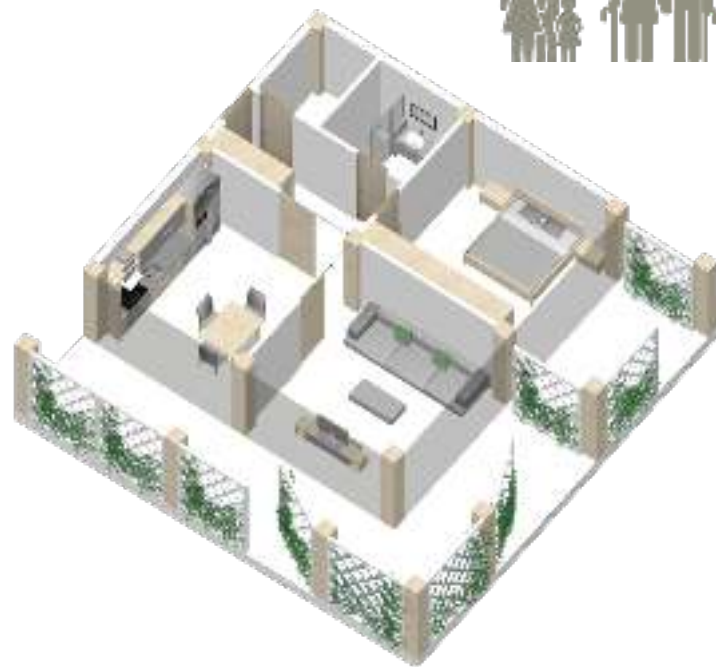
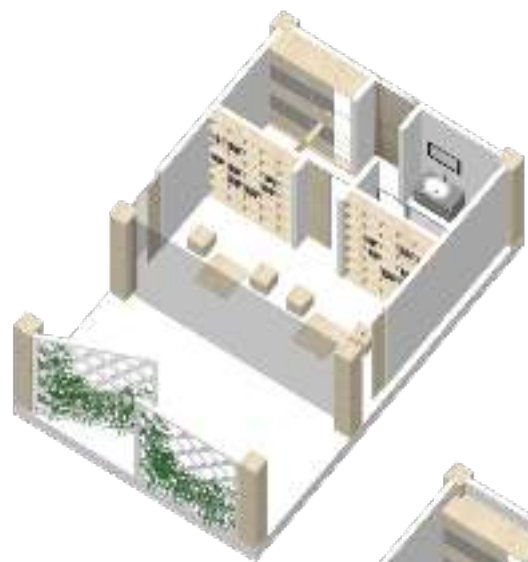


SOUTH ELEVATION/ SECTION A-A





Apartment catalogue, housing for everyone

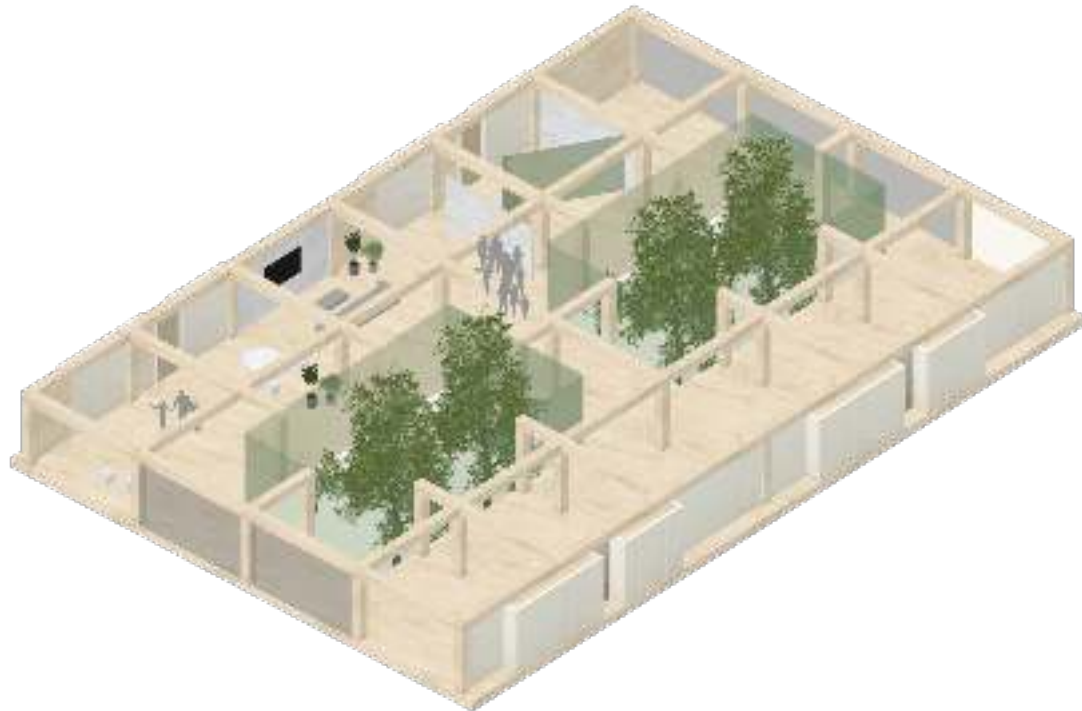


SHARED SPACES



Singles shared space

Transformable spaces
Additional spaces
Communal spaces for socializing



Students shared space

Quiet and dynamic spaces
Semi private spaces for studying
Cooking & socializing



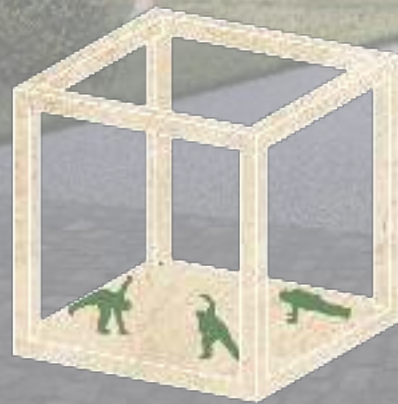
AMENITIES



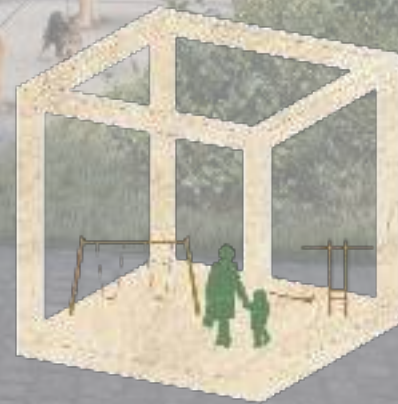
PARK



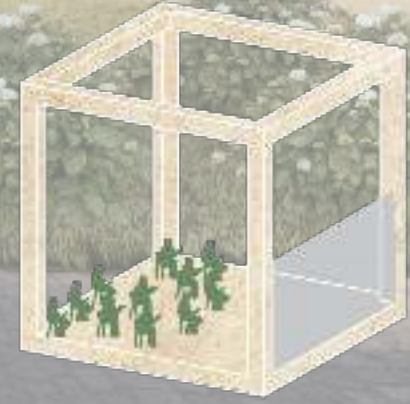
CONCERT



FITNESS

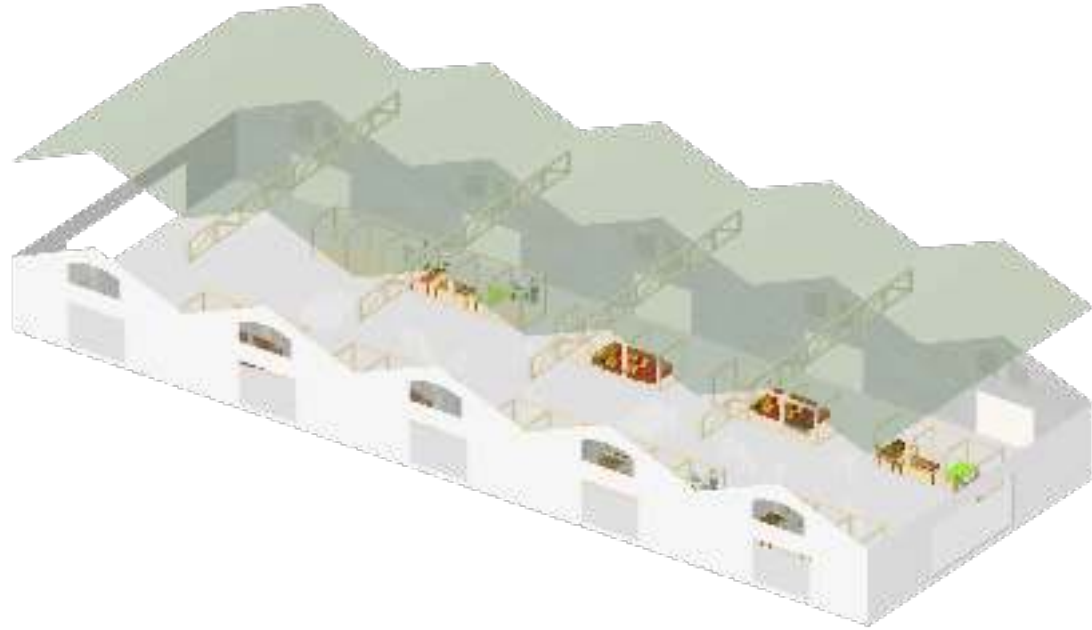


CHILDREN
PLAYGROUND

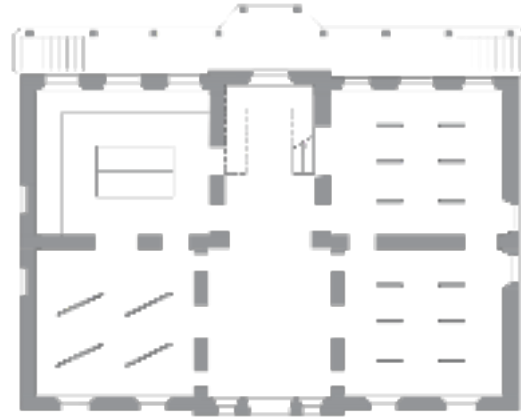


OUTDOOR CINEMA

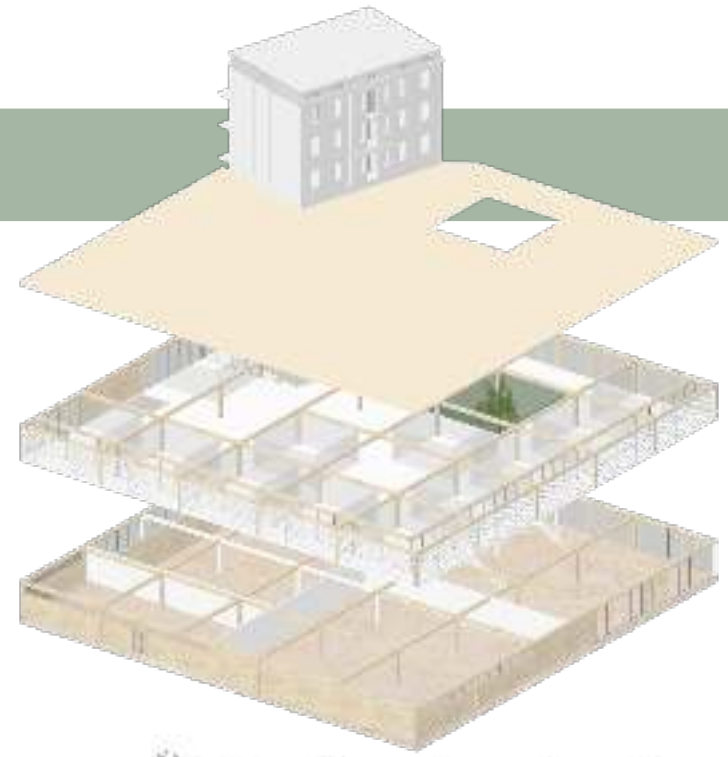
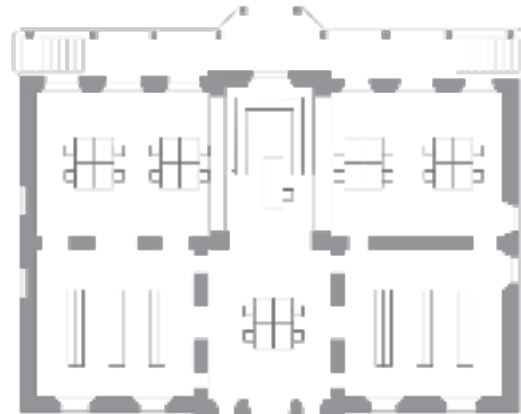
ADAPTIVE REUSE: MAISON COIGNET



GROUND FLOOR



FIRST FLOOR

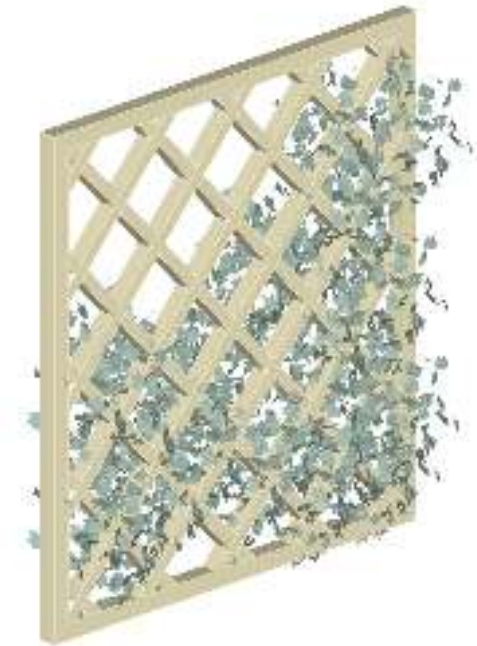


SUSTAINABILIT

Y



SUSTAINABILITY

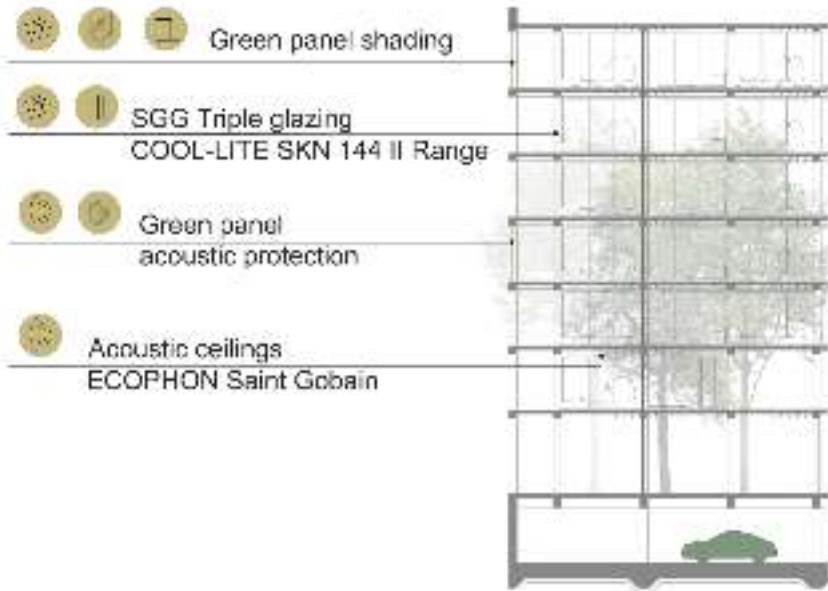


Multifunctional purpose of panel:

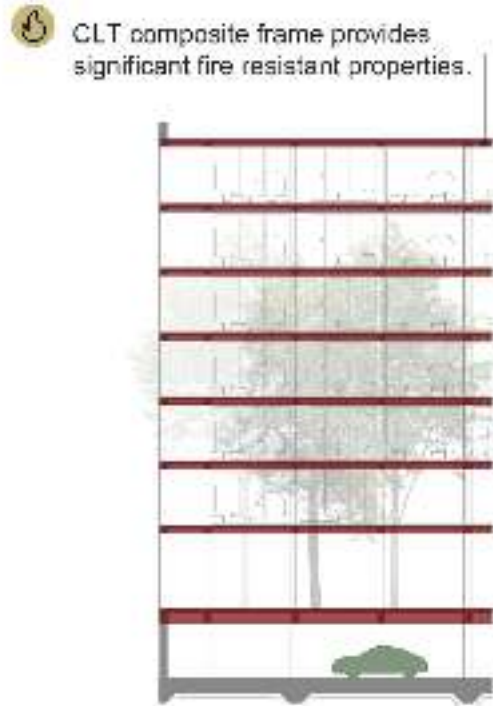
1. Natural light while maintaining privacy
2. Providing shade
3. Thermal and acoustic comfort
4. Flexibility

SUSTAINABILITY

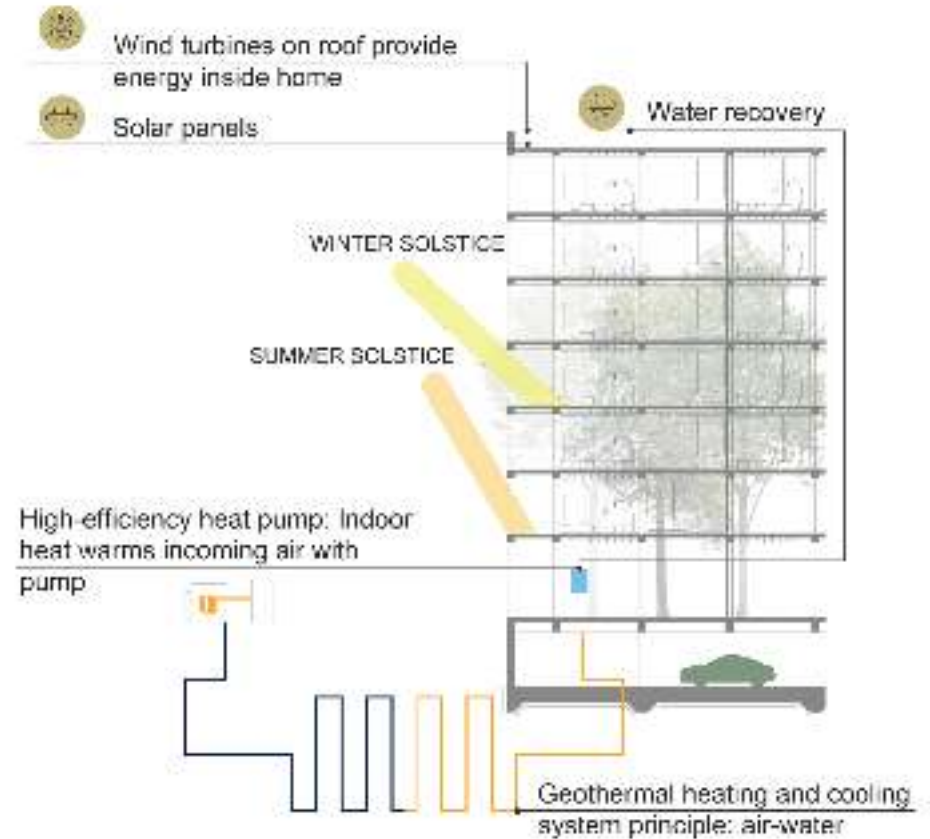
ACOUSTIC AND THERMAL COMFORT



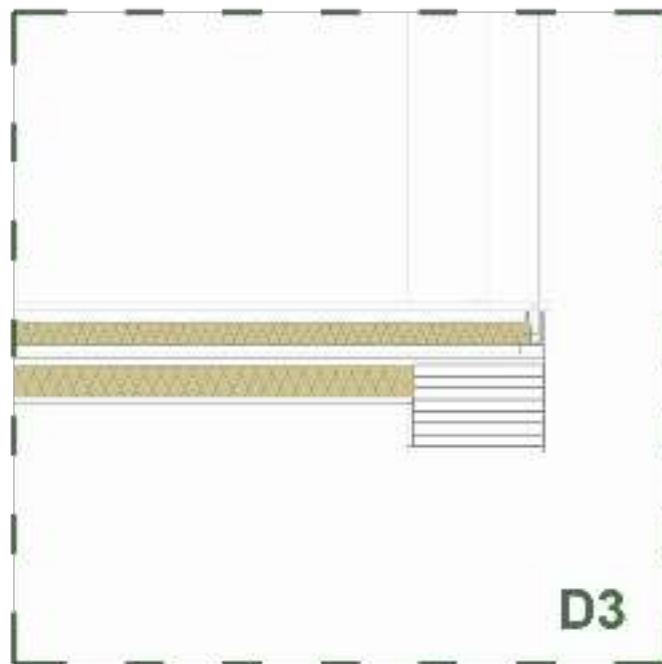
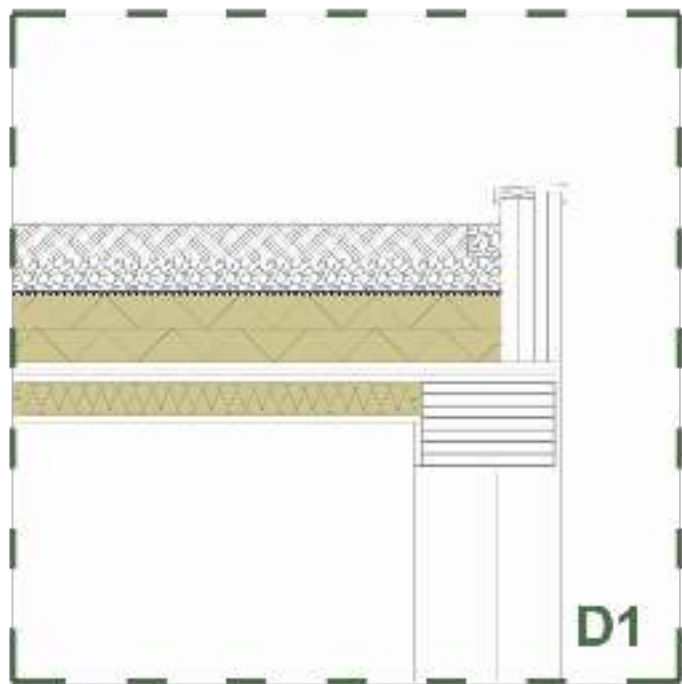
FIRE SAFETY STRATEGY



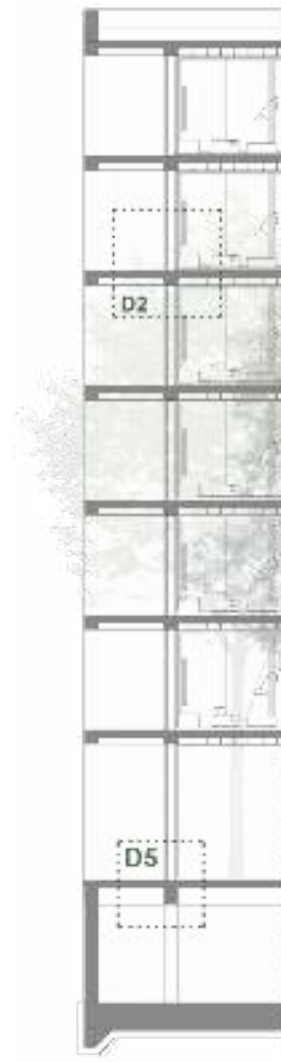
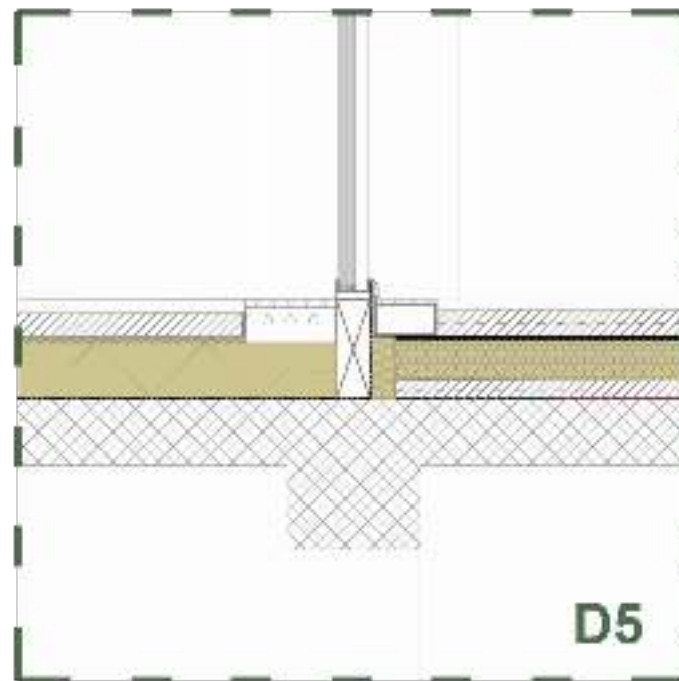
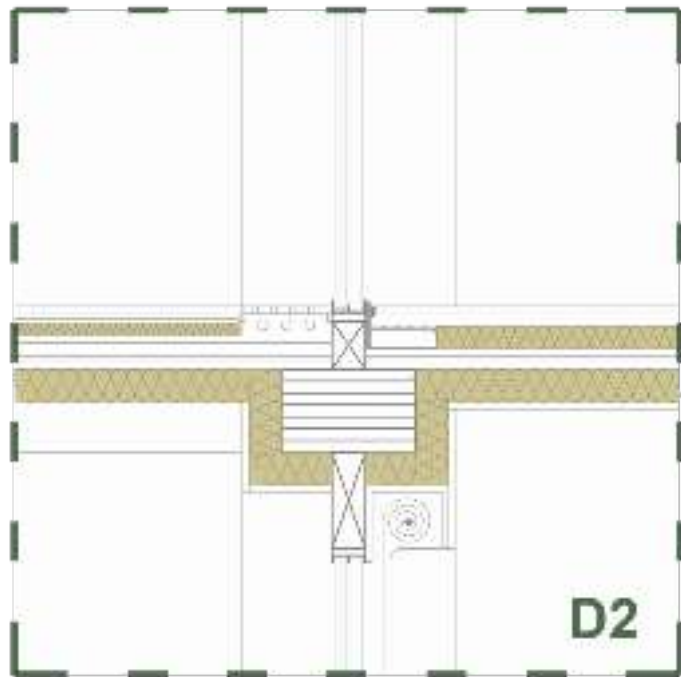
ENERGY SUPPLY AND NATURAL DAYLIGHT STRATEGY



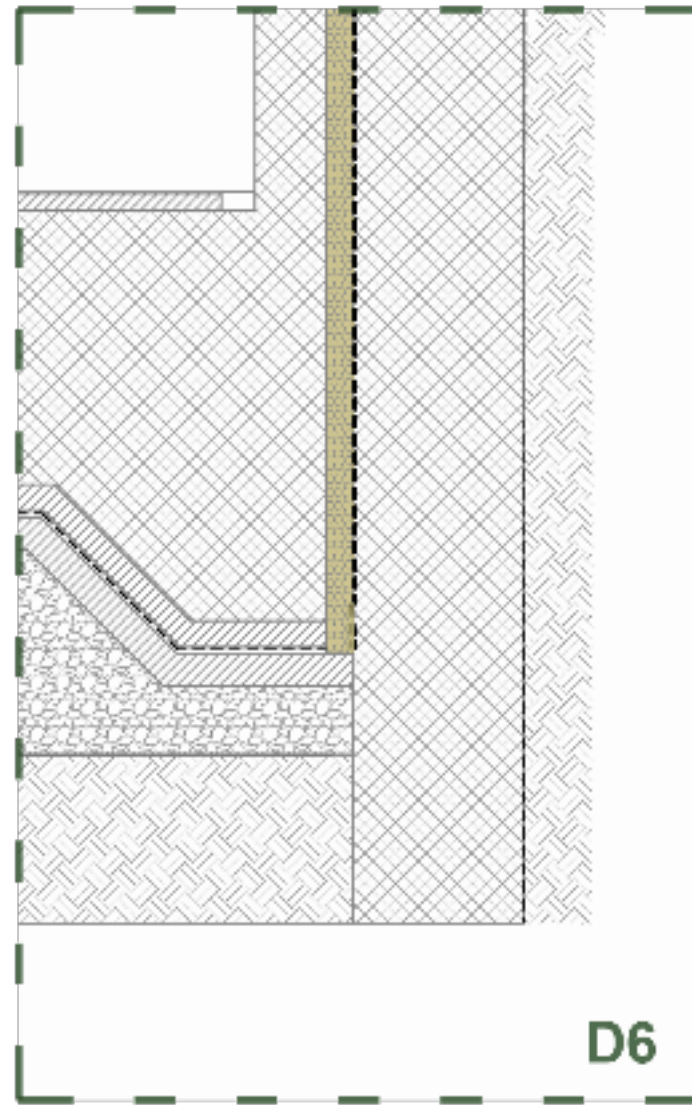
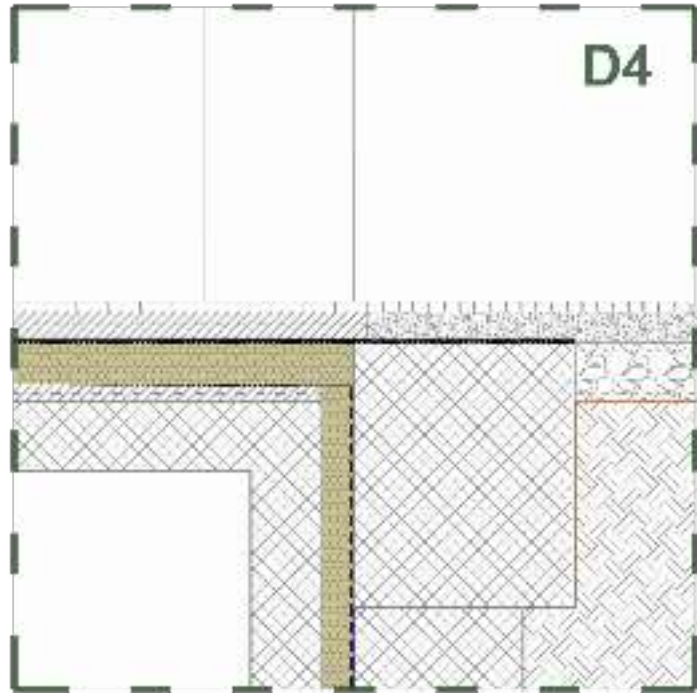
CONSTRUCTION DETAIL



CONSTRUCTION DETAIL



CONSTRUCTION DETAIL



ENERGY EFFICIENCY CLASS

Wall against air	0.13 W/(m ² /K)
Wall against ground	0.15 W/(m ² /K)
Slab against ground	0.10 W/(m ² /K)
Slab against cellar	0.16 W/(m ² /K)
Roof flat	0.10 W/(m ² /K)
Window	0.55 W/(m ² /K)
Door	0.70 W/(m ² /K)

Transmission Heat Losses:	79333.33 kWh/a
Ventilation Heat Losses:	13659.60 kWh/a
Total Heat Losses:	92992.93 kWh/a
Internal Heat Gains:	36079.58 kWh/a
Solar Heat Gains:	23987.68 kWh/a
Total Heat Gains:	57488.51 kWh/a
Annual Heat Demand:	35504.43 kWh/a
Specific Heat Demand:	9.87 kWh/(m ² a)

