



Live here
Live active
Live in comfort



Ukraine_KNUCA
Zetta_Katherine
Fitsa_Vladyslav



Master plan. Analysis


Saint-Denis



Paris



Saint-Denis is 9 km from centre of Paris:

30 min on 

40 min on 

60 min on 



Master plan. Analysis



10 min from the nearest railway

20 min from the underground station
"Carrefour Pleyel"

20 min from the centre of Saint-Denis

30 min from Stad de Frans

project site

It was an industrial area. Until recently, Saint-Denis was not a prestigious area, but with the beginning of gentrification, the municipality received a new life. The population is 107,762 people (2011).



Master plan. Analysis

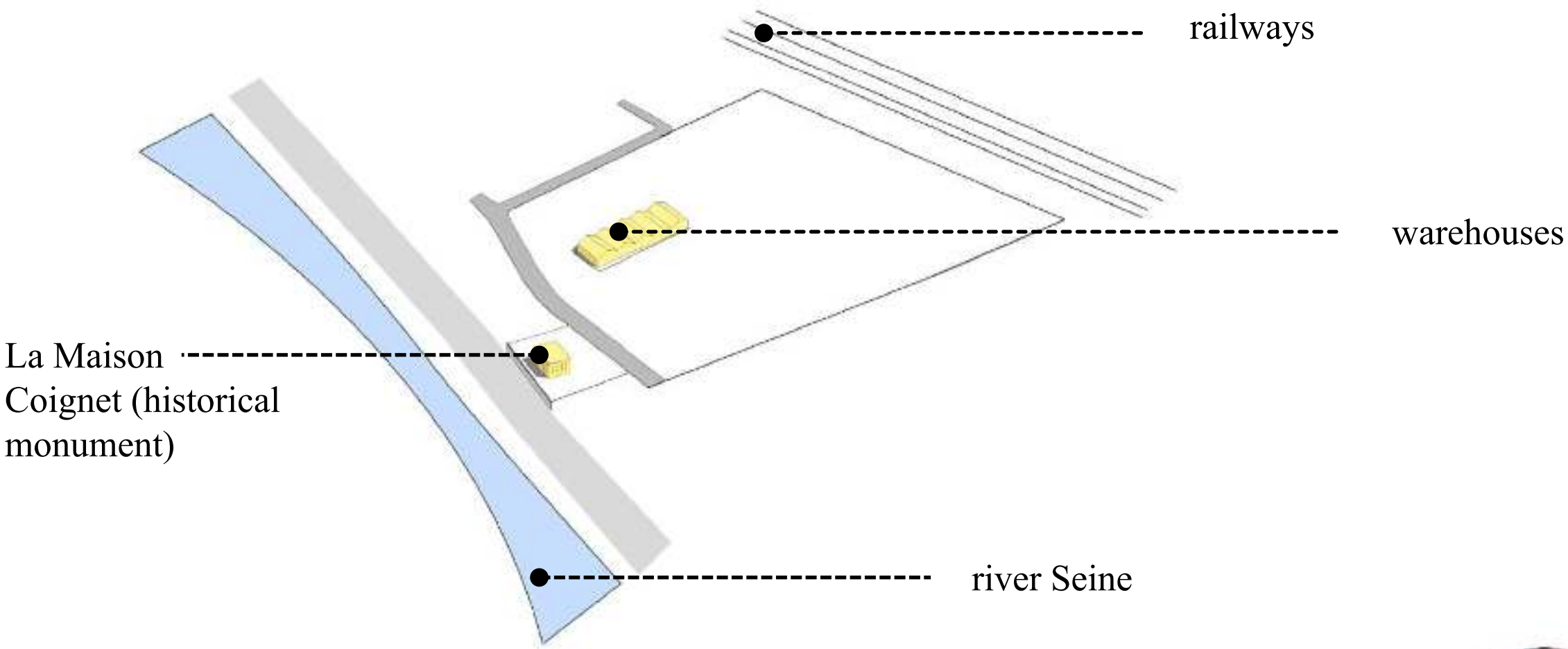
railway station – Gare de Saint-Denis
(10 min)

bus stop (3 min)

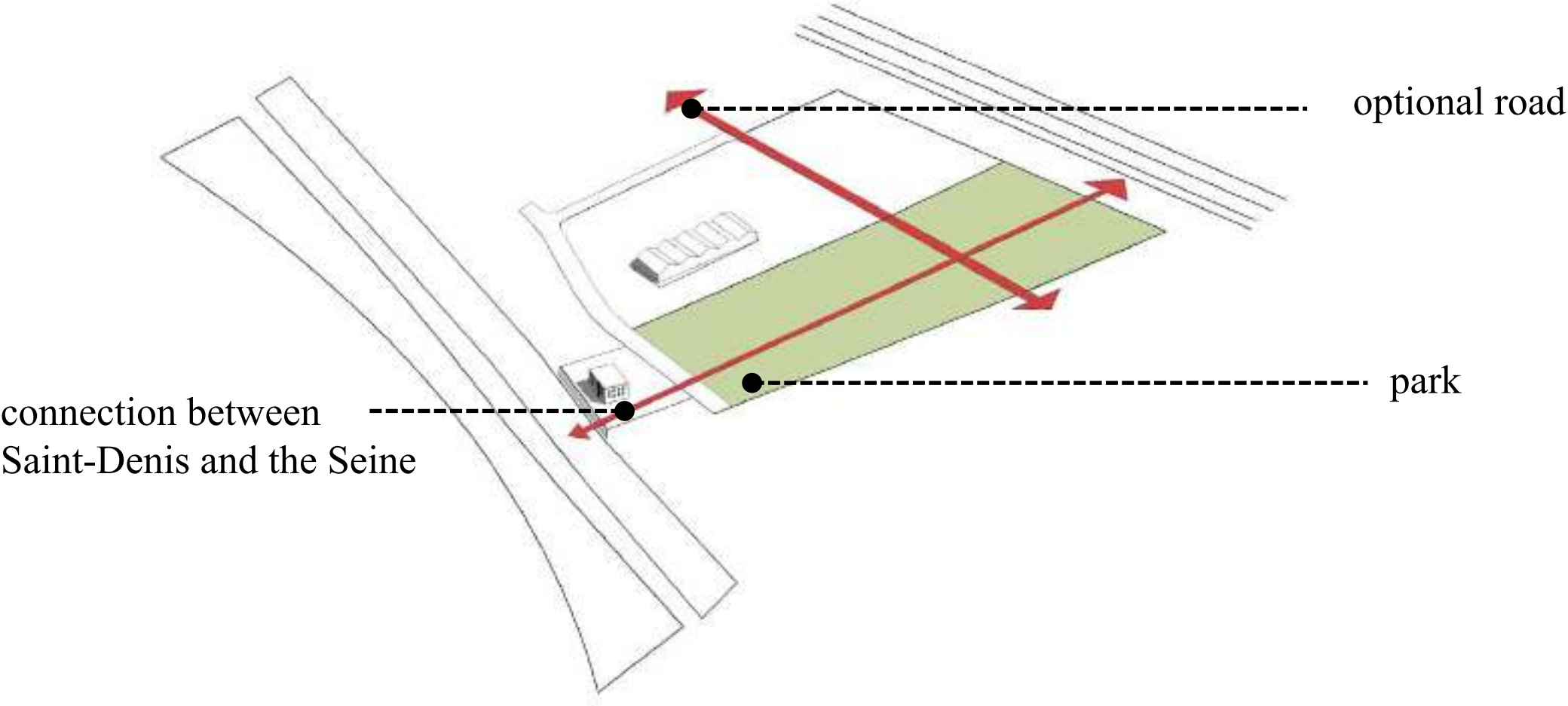
project site

bus stop (4 min)

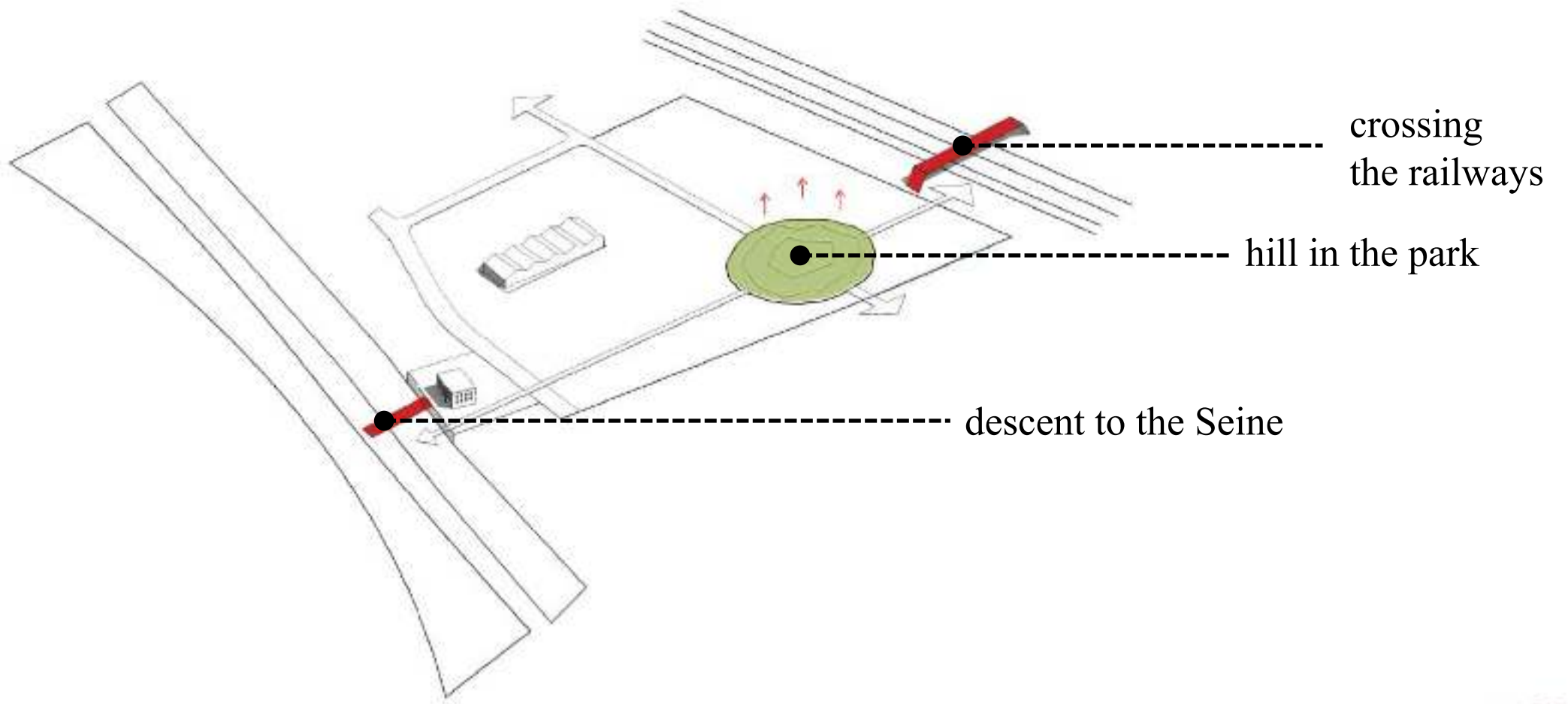
Data-out



Concept diagram. Data-out



Concept diagram. Shaping

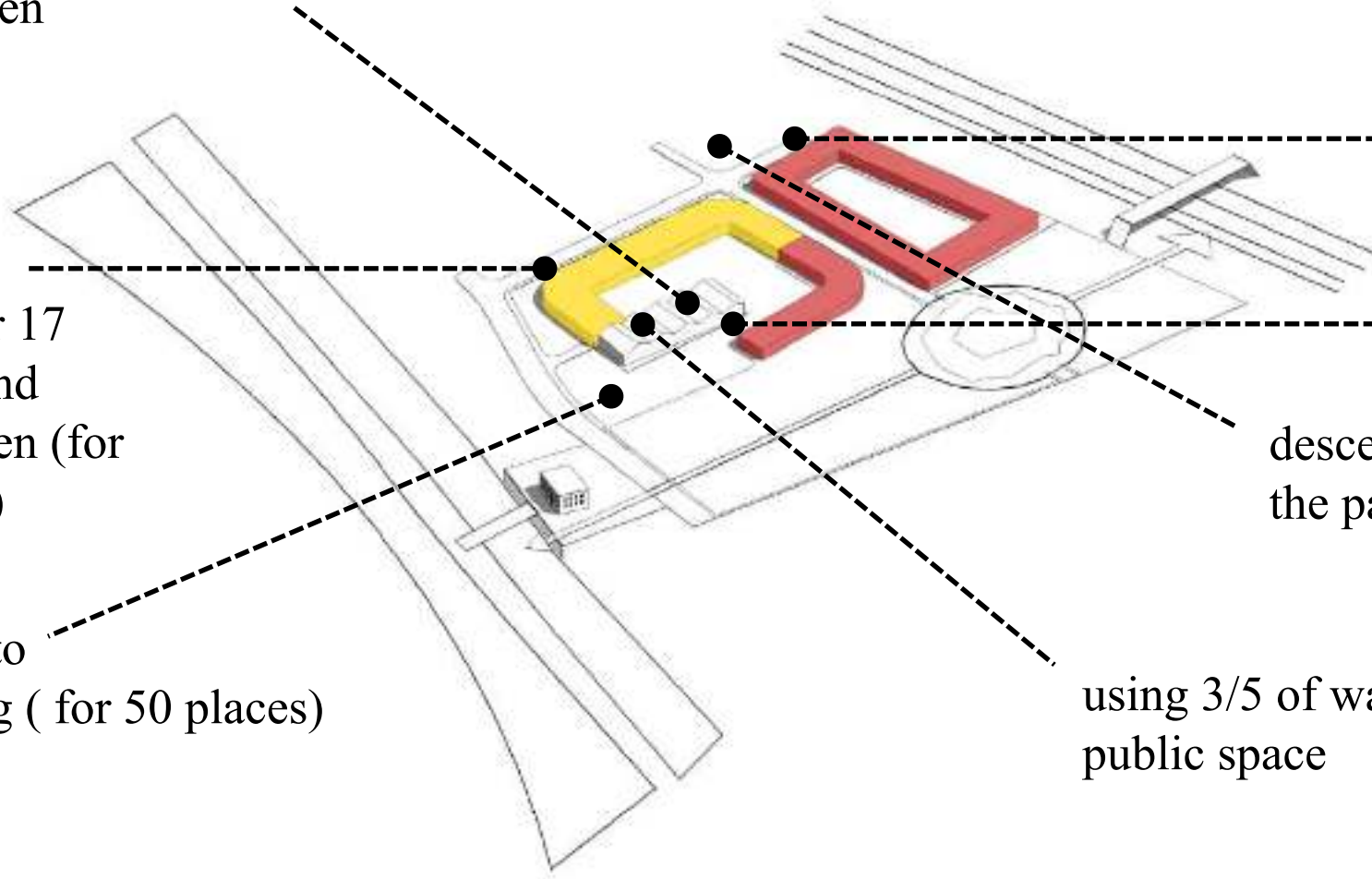


Concept diagram. Shaping

using 2/5 of warehouses for
children's needs of school and
kindergarten

primary
school (for 17
classes) and
kindergarten (for
13 classes)

descent into
the parking (for 50 places)



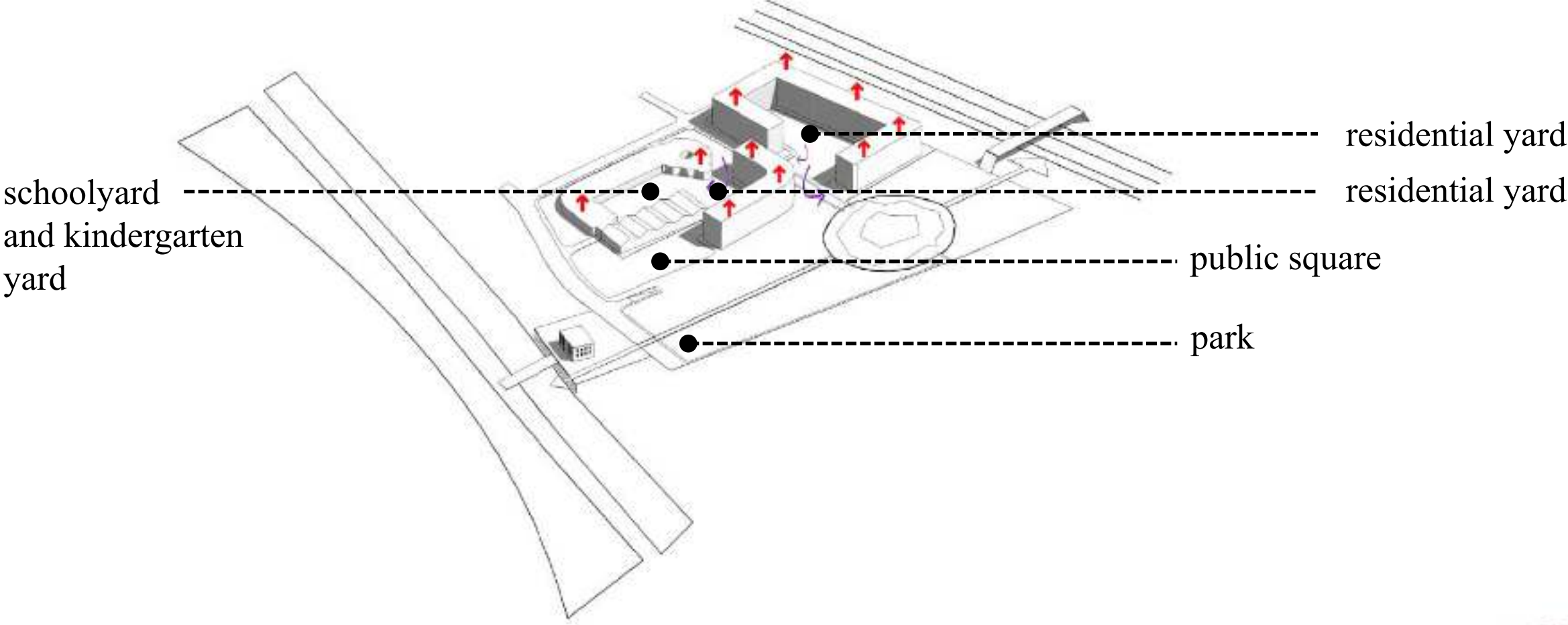
residential house
(for 153 apartments)

residential house
(for 68 apartments)

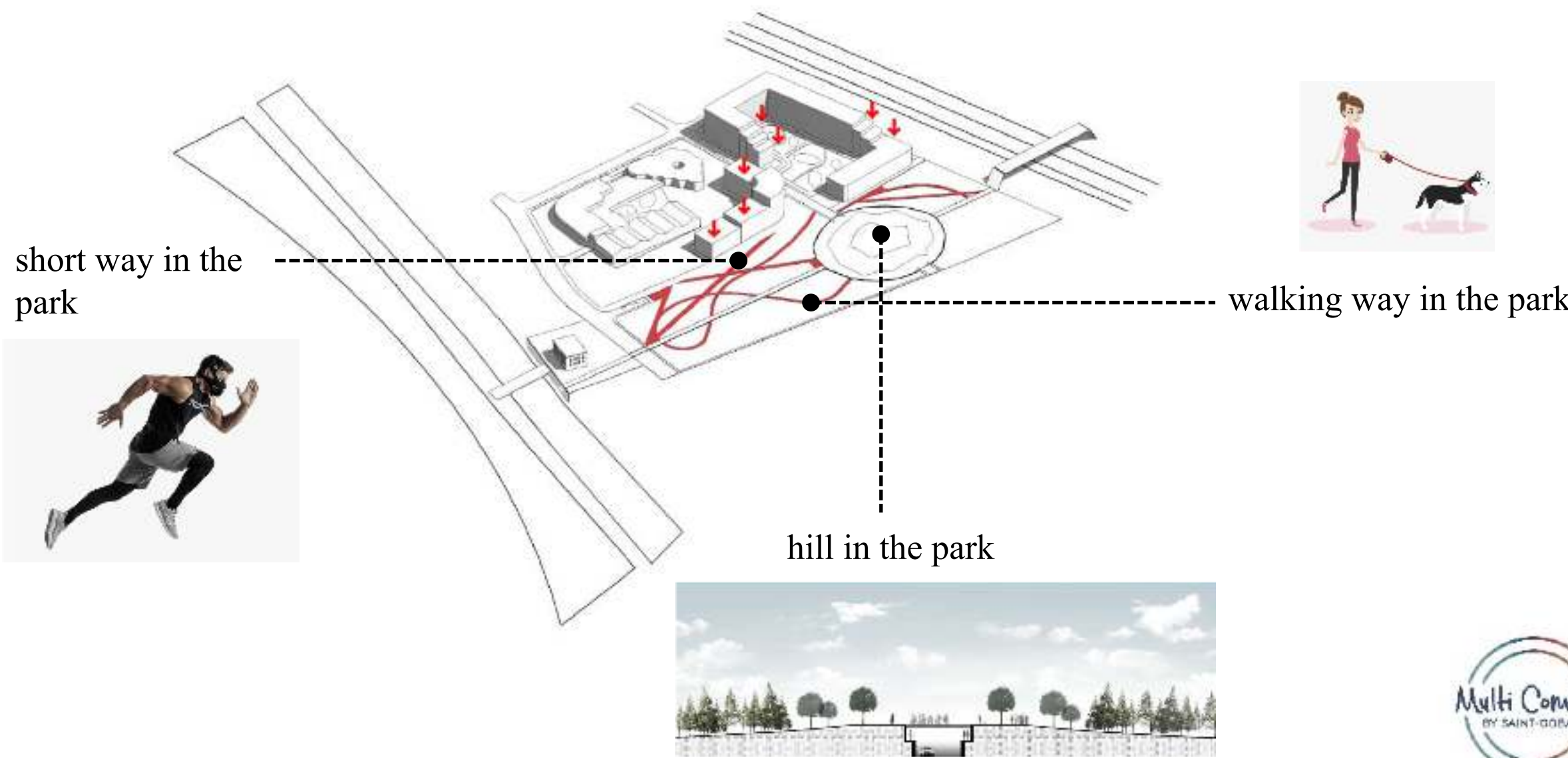
descent into
the parking (for 100 places)

using 3/5 of warehouses for
public space

Concept diagram. Shaping



Concept diagram. Shaping



short way in the park

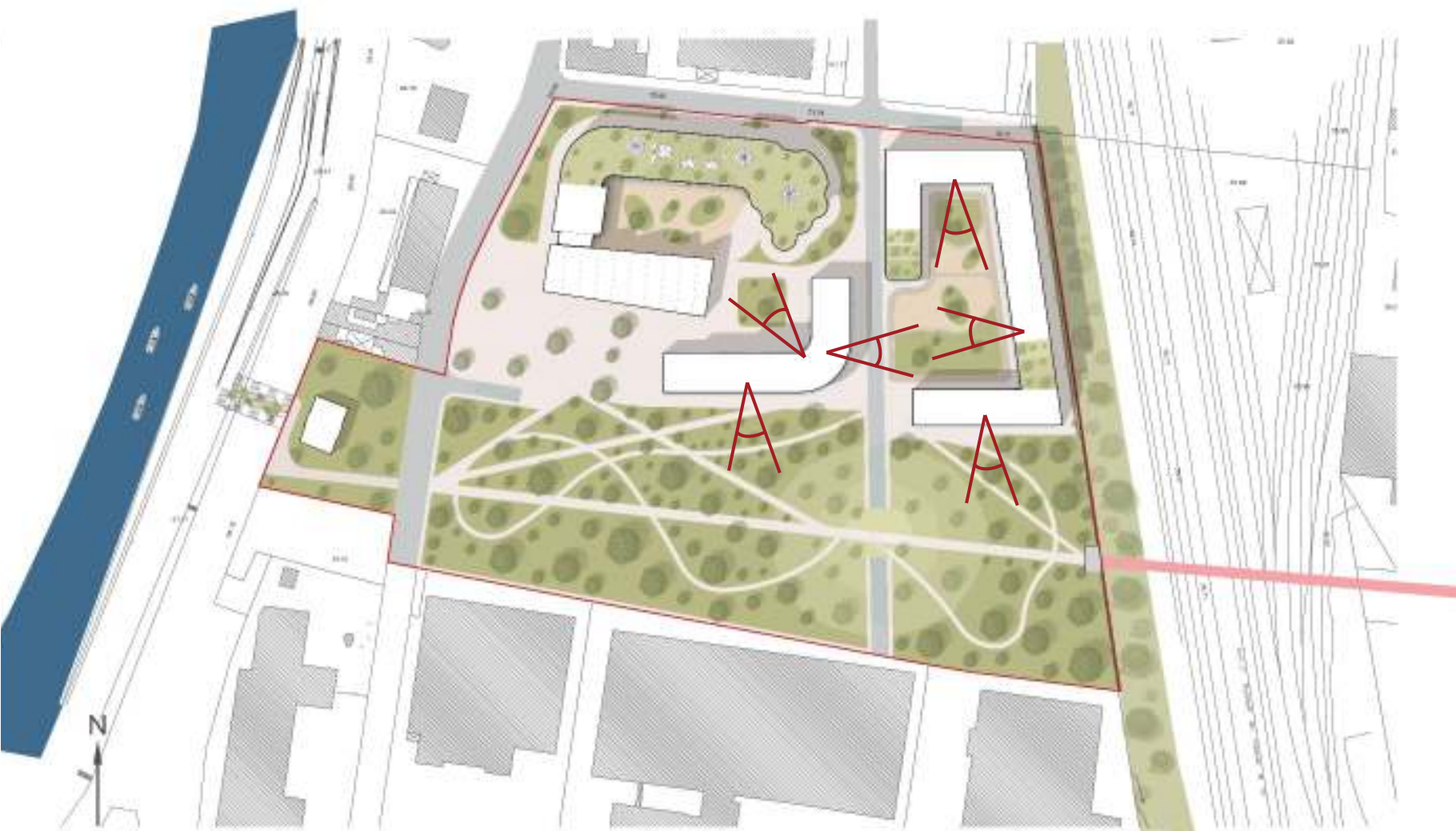


walking way in the park

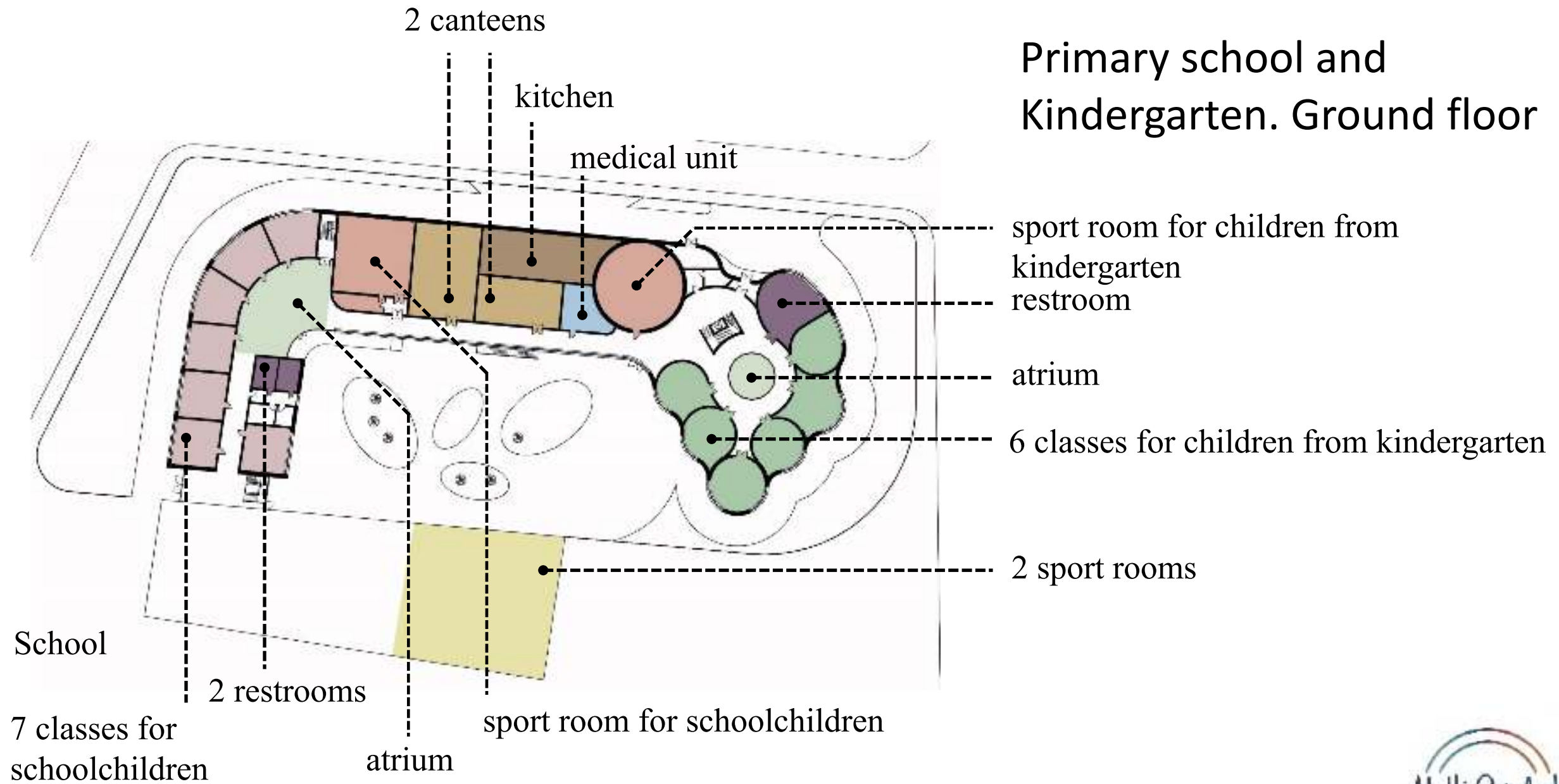
hill in the park



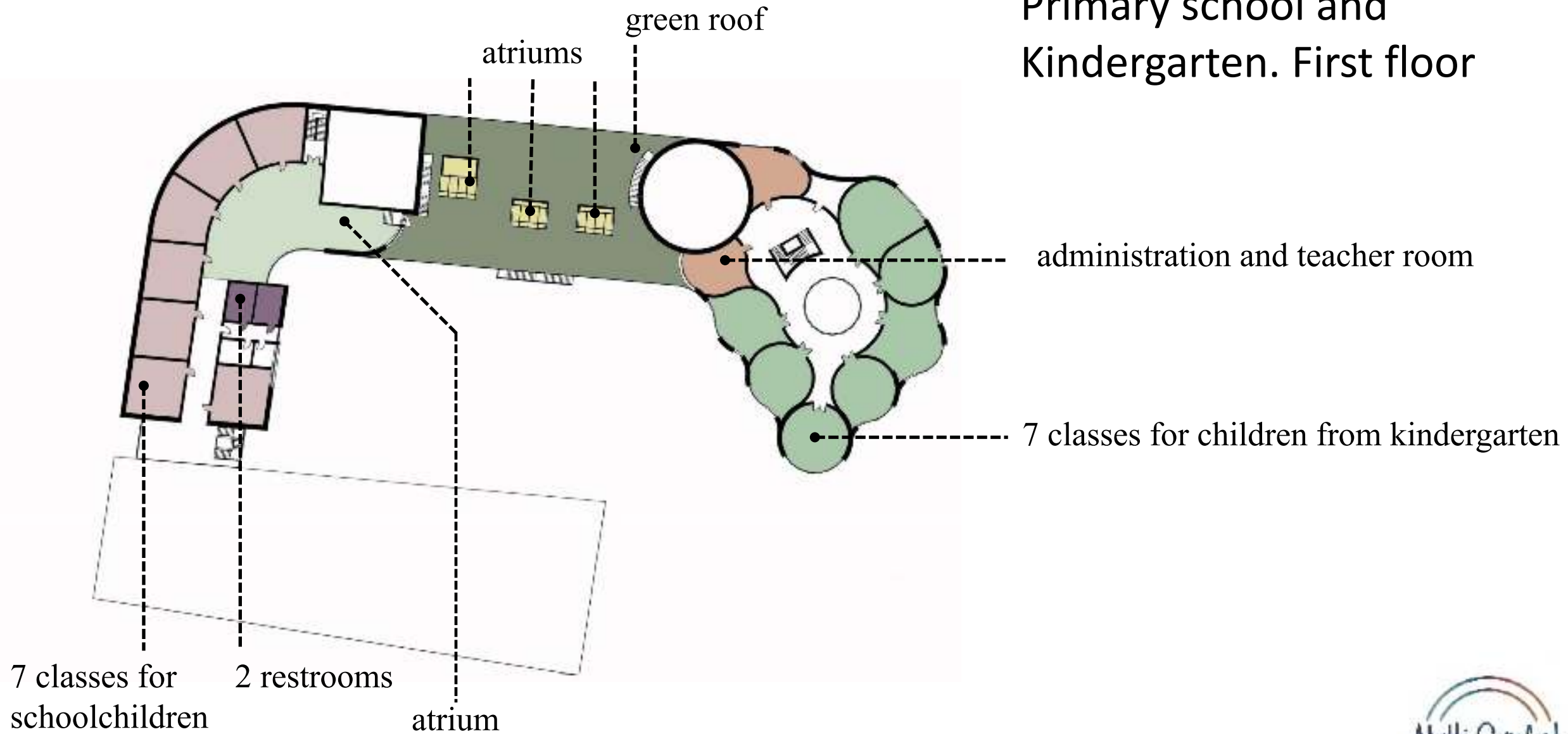
Master plan. Video ecology

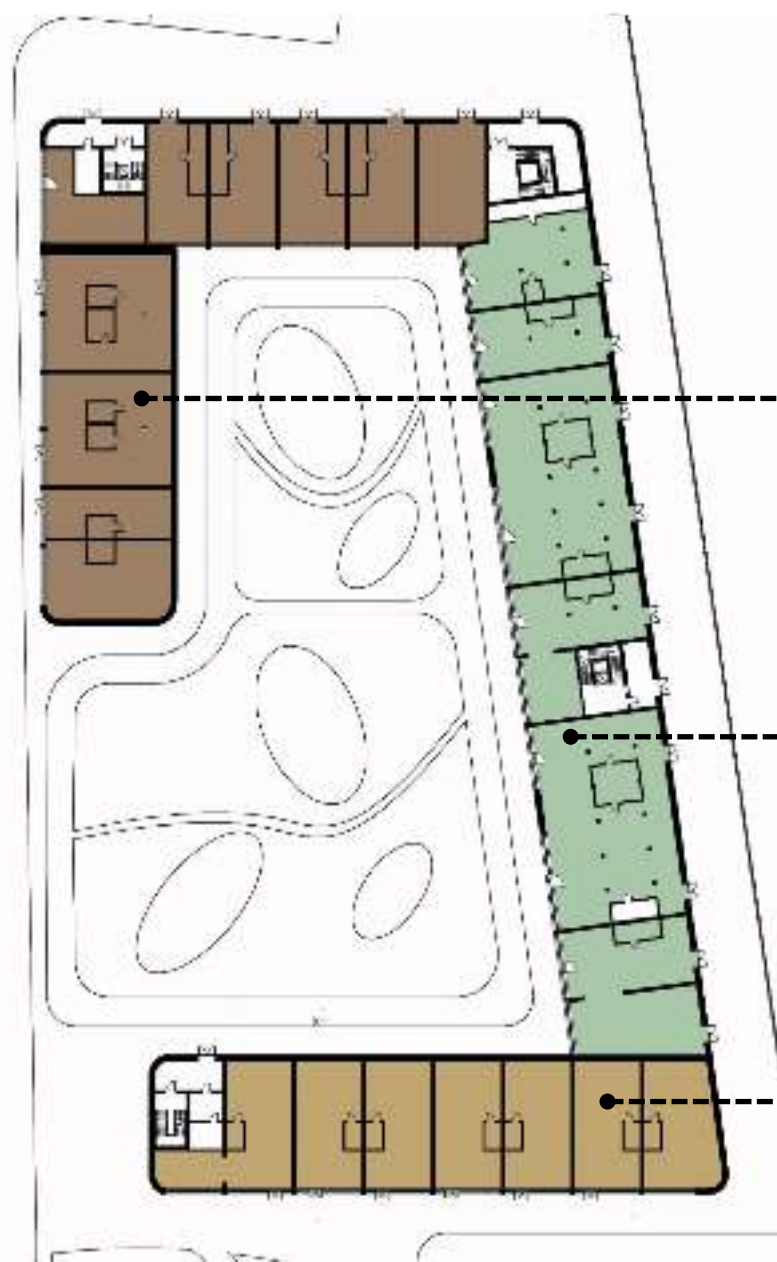
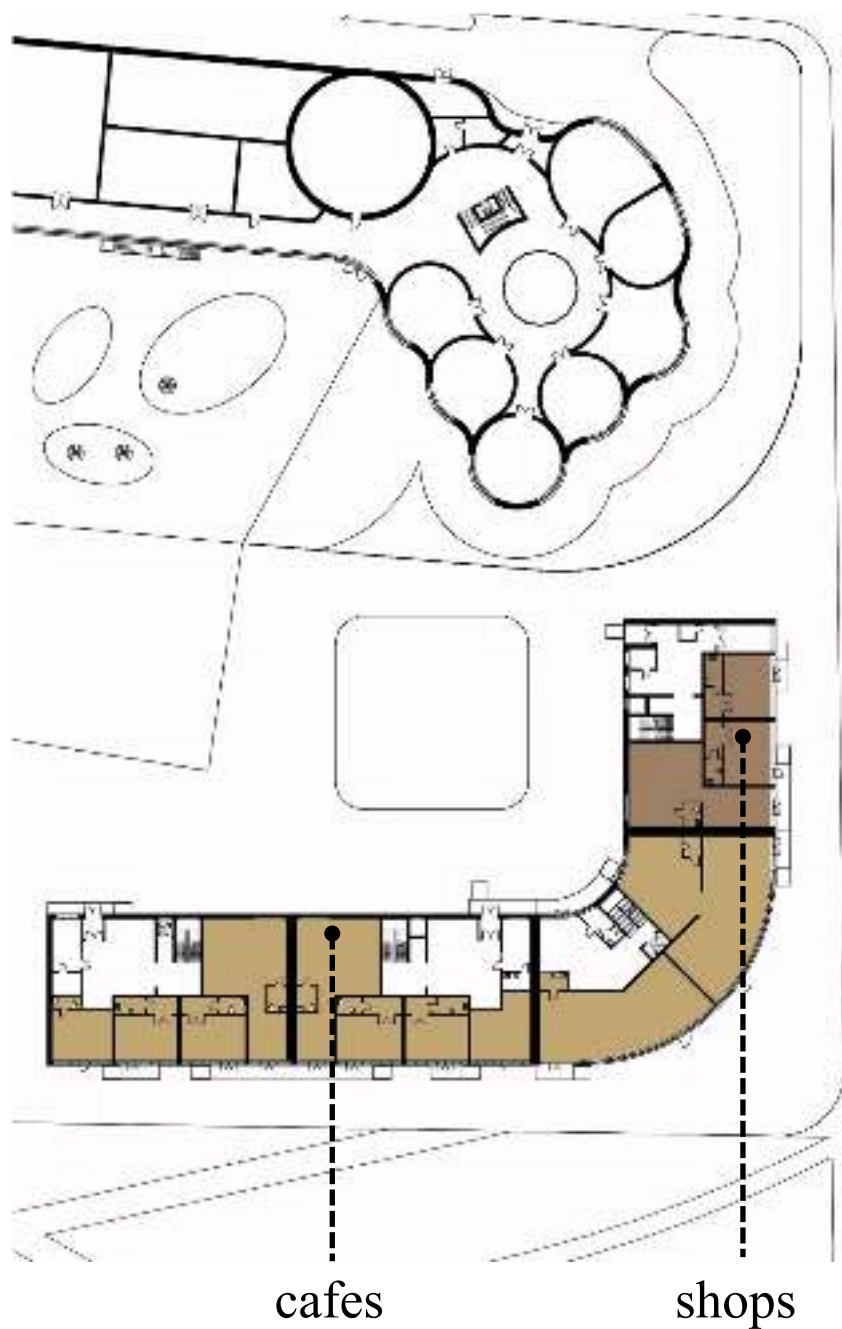


Primary school and Kindergarten. Ground floor



Primary school and Kindergarten. First floor



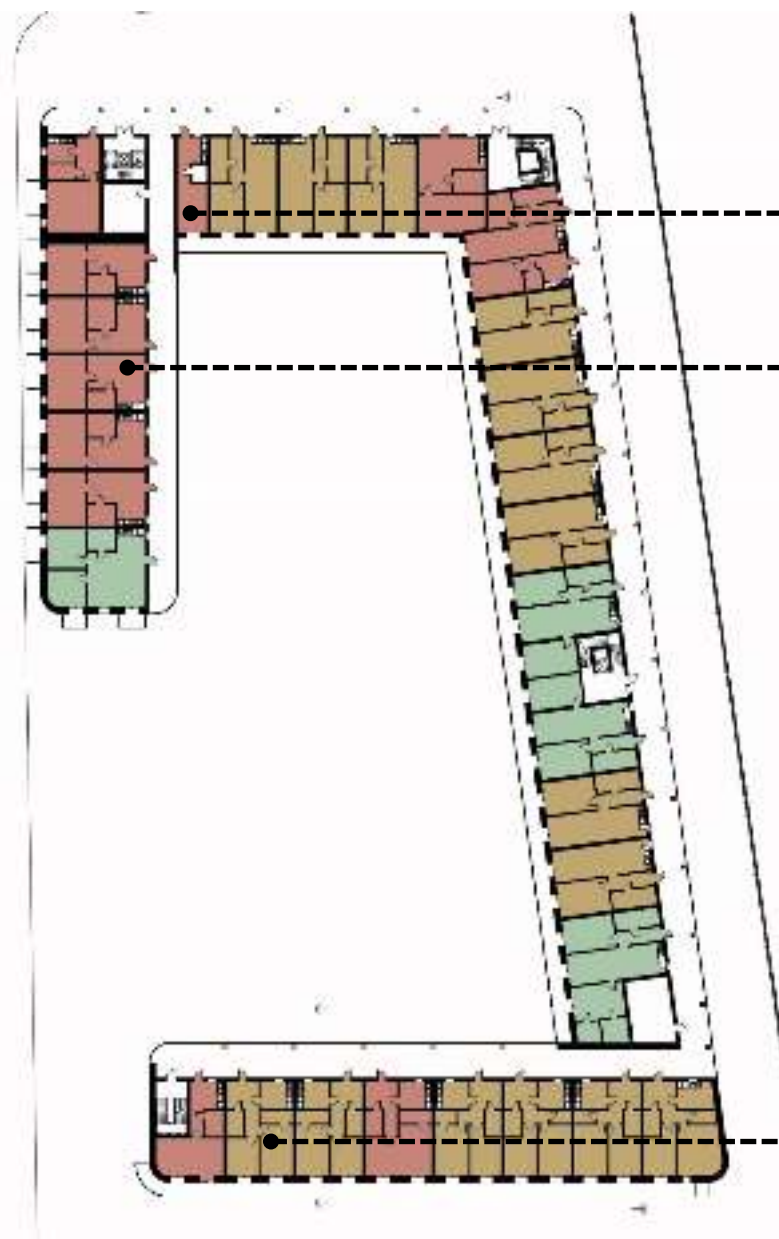
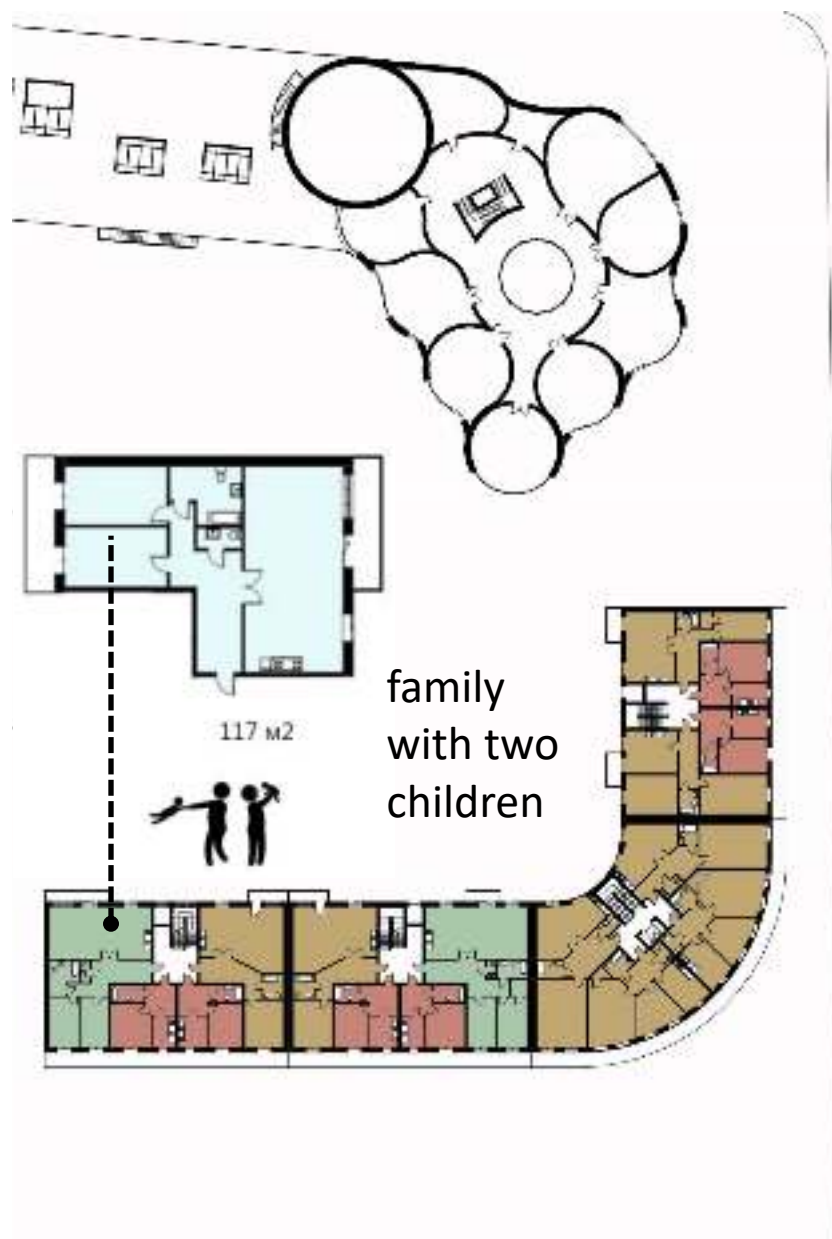


Residential houses. Ground floor

shops

public space

cafes



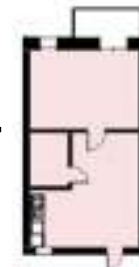
Residential houses. First floor



28 m2



single



55 m2



married

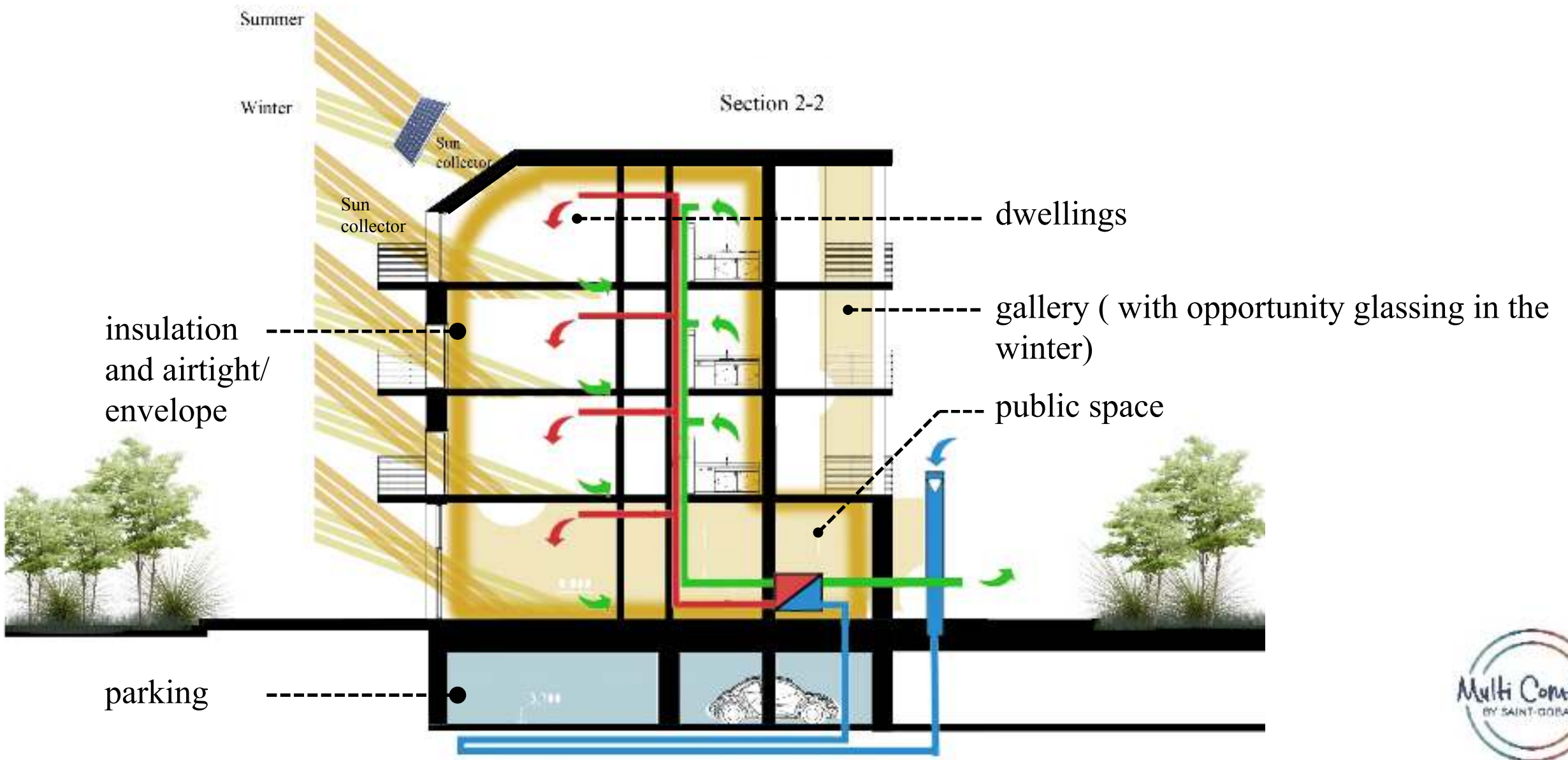


63 m2

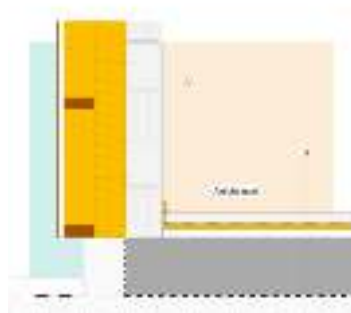


family with
a child

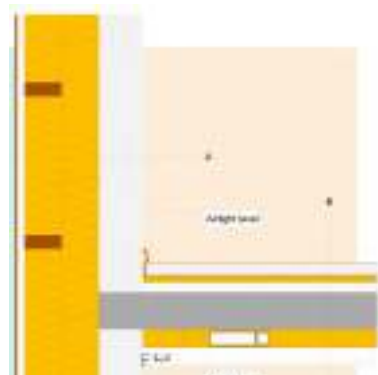
Section



Section and units



- Floor covering
- 5 Sward
 - Vapour retarder and separating layer
 - 3 ISOVER Akustik EPS 040
 - 4 ISOVER Depant DRS 100/003es comp for h. of tube
 - 0.5 Sealing against moisture
 - 30 Concrete foundation slab
- Separating layers
- 10 Styrodur OS
 - 10 Styrodur OS
 - 10 Styrodur OS
- Granular subbase

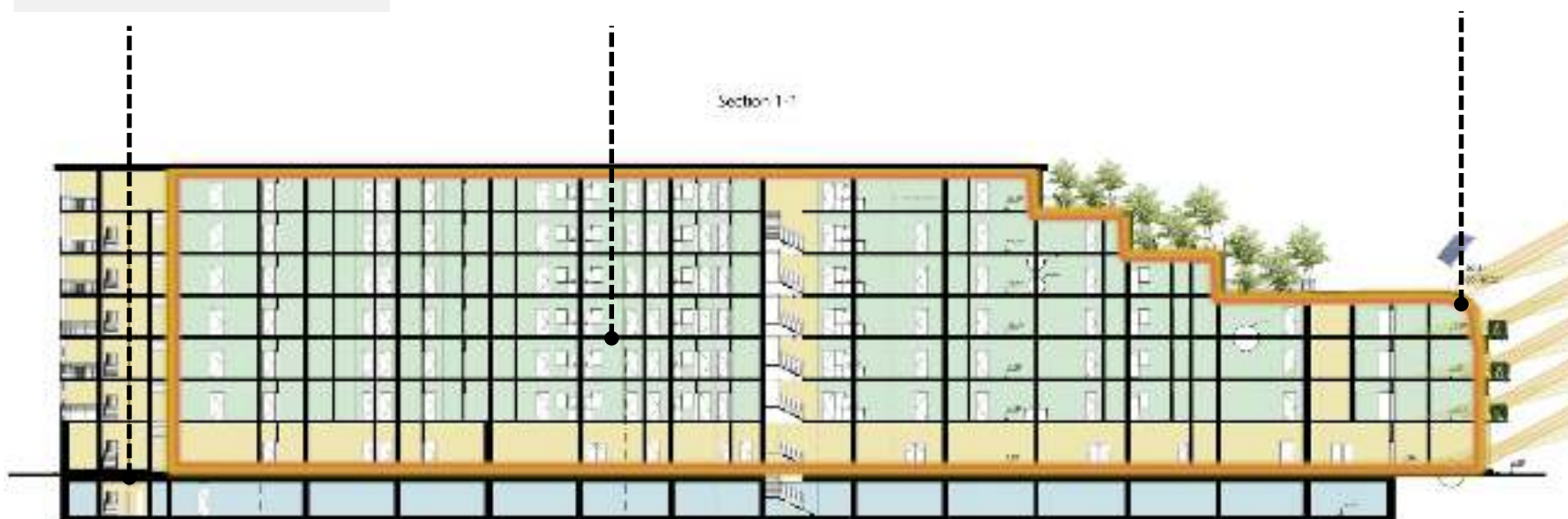


- 1.5 Interior plaster
- 17.5 Lime-sandstone KER 6 DF (175)
- 16 ISOVER Kontur FSP 1-032 Easy Rx(wood vertical 6/16 w=60cm)
 - 16 ISOVER Kontur FSP 1-032 Easy Rx(wood horizontal 6/16 w=120cm)
 - 3 Rear ventilation
 - 1 Exterior cladding (e.g. wood, metal, plastic, stone)



- Roof covering
- 3 Roof decking
 - 5 Counter battens 5/5
ISOVER Integra ZUB underlay sheathing
 - 2.4 Solid timber panning
 - 24 ISOVER Integra ZXP 1-032(wood 6/24 w=70cm, 8% vp)
ISOVER Veris KM Daplex UV
 - 6 ISOVER Integra UNP 1-032(wood 6/6 w=50cm, 11% vp)
 - 2.3 Rigips Rigidur H double layer, each layer 12.3mm

Section 1-1

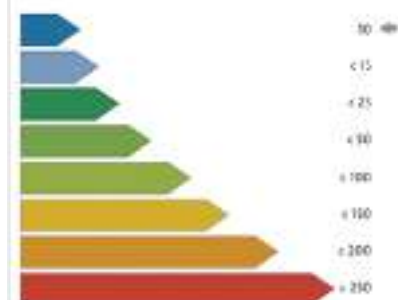


CALCULATIONS

Specific Heat Demand

Transmission Heat Losses:	22933.35	MWh/a
Ventilation Heat Losses:	38119.84	MWh/a
Total Heat Losses:	61053.20	MWh/a
Internal Heat Gains:	28478.14	MWh/a
Solar Heat Gains:	14242.71	MWh/a
Total Heat Gains:	38757.35	MWh/a
Annual Heat Demand:	22295.85	MWh/a
Specific Heat Demand:	8.45	MWh/(m²a)

Energy efficiency classes



Summer
Winter

Perspective



Perspective



Perspective





Live here
Live active
Live in comfort

